

Main

| | |
|---------------------------|---|
| Range of product | Modicon Momentum automation platform |
| Product or component type | Analogue input base |
| Analogue input number | 16 |
| Analogue input type | Single ended |
| Analogue input range | +/- 10 V 12 bits + sign > 2200 kOhm +/- 5 V 12 bits + sign > 2200 kOhm 4...20 mA 12 bits < 0.25 Ohm 4...20 mA 12 bits < 0.25 Ohm |
| Type of filter | Low pass input filter 10 kHz |

Complementary

| | |
|---------------------------------------|--|
| Data format | Full 16 bits signed |
| Absolute accuracy error | +/- 0.15 % of full scale 25 °C +/- 10 V +/- 0.15 % of full scale 25 °C +/- 5 V +/- 0.25 % full scale 25 °C 4...20 mA +/- 0.25 % full scale 60 °C +/- 10 V +/- 0.25 % full scale 60 °C +/- 5 V +/- 0.45 % full scale 60 °C 4...20 mA |
| Temperature drift | 30 %oFS/°C +/- 10 V 60 °C 30 %oFS/°C +/- 5 V 60 °C 60 %oFS/°C 4...20 mA 60 °C |
| Full scale | 10 V +/- 10 V 16 mA 4...20 mA 5 V +/- 5 V |
| Update time | 25 ms |
| Isolation between channels and ground | 1780 V AC for 1 minute |
| Isolation between supply and ground | 500 V for 1 minute |
| Permissible common mode voltage | 100 V 47...63 Hz DC between channels to ground 250 V 47...63 Hz AC between channels to ground |
| External power requirement | +/- 30 V DC |
| Power dissipation in W | <= 5.55 W |
| Reverse polarity protection | Internal |
| Protection type | Internal 2 A slow-blow |
| Associated fuse rating | 500 mA fast blow |
| Marking | CE |
| Local signalling | 16 LEDs channel status |
| Electrical connection | 2 connectors for removable terminal blocks |
| Current consumption | 305 mA 24 V DC |
| Depth | 47.5 mm |
| Height | 125 mm |
| Width | 141.5 mm |
| Product weight | 0.215 kg |

Environment

| | |
|---------------------------------------|------------------------------------|
| product certifications | CSA FM Class 1 Division 2 UL |
| protective treatment | TC |
| resistance to electrostatic discharge | 4 kV contact IEC 801-2 |

The information provided in this documentation contains general descriptions and/or technical characteristics of the performance of the products contained herein. This documentation is not intended as a substitute for and is not to be used for determining suitability or reliability of these products for specific user applications. It is the duty of any such user or integrator to perform the appropriate and complete risk analysis, evaluation and testing of the products with respect to the relevant specific application or use thereof. Neither Schneider Electric Industries SAS nor any of its affiliates or subsidiaries shall be responsible or liable for misuse of the information contained herein.

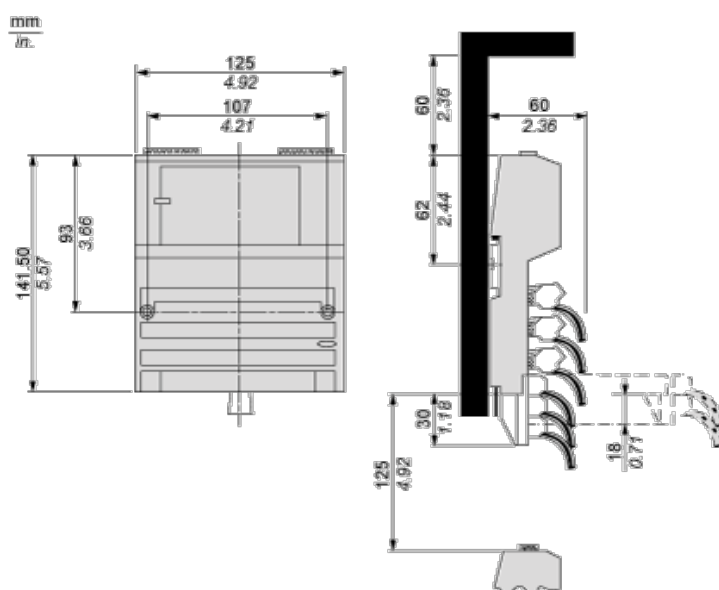
| | |
|---------------------------------------|--------------------------------|
| | 8 kV on air IEC 801-2 |
| resistance to electromagnetic fields | 10 V/m 80...1000 MHz IEC 801-3 |
| ambient air temperature for operation | 0...60 °C |
| ambient air temperature for storage | -40...85 °C |
| relative humidity | 95 % without condensation |
| operating altitude | <= 5000 m |

Offer Sustainability

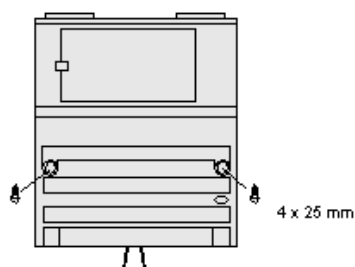
| | |
|----------------------------------|---|
| Sustainable offer status | Green Premium product |
| RoHS (date code: YYWW) | Compliant - since 0901 - Schneider Electric declaration of conformity |
| REACH | Reference not containing SVHC above the threshold |
| Product environmental profile | Available |
| Product end of life instructions | Available |

Standard Adapter on a Typical Base

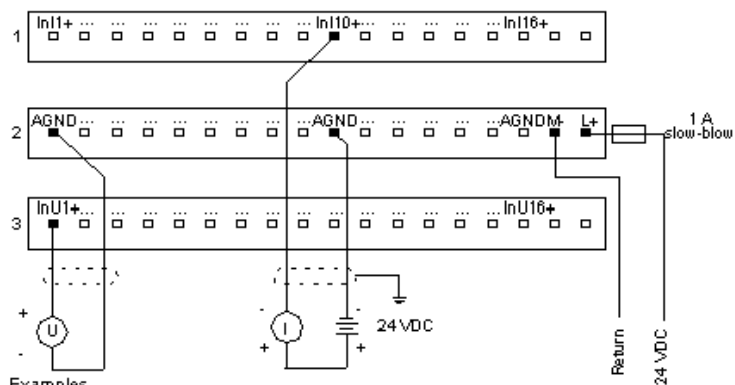
Dimensions



Mounting on a Wall



External Wiring Diagram



Examples

* Channel 1, wired for voltage input

* Channel 10, wired for current input

Internal Pin Connections

