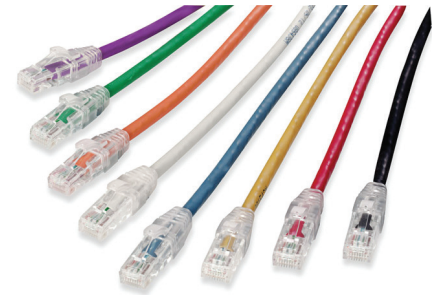


PowerCat 6 U/UTP Patch Cord >

Molex PowerCat 6 U/UTP Patch Cords are key components of PowerCat 6 U/UTP End-to-End Solution and are designed to support data networks for 10/100BASE-T and 1000BASE-T applications.

The patch cable is made from high quality four pair 24 AWG stranded copper wire. Available in a range of colors and lengths, PowerCat 6 patch cords are pre-terminated with RJ45 plugs and feature anti-slag slim strain relief slip on boots.



FEATURES & ADVANTAGES

4 pair 24 AWG stranded copper wire

Pre-terminated with WE8W plugs

Slim clear anti-slag slip on boots

Suitable for EIA 568A or 568B wiring

LSOH sheath

RoHS Compliant

SPECIFICATIONS

Commercial Standards

ANSI/TIA-568.2-D-2018
ISO/IEC 11801-1:2017
UL Listed
ETL Verified
AS/CA S008:2020
RoHS Compliant

Fire Propagation Tests

LSOH Sheath: CSA FT1, IEC 60332-1,
IEC 61034
IEC 60754

Mechanical

Cable

Conductor Size:

24 AWG stranded copper wire

Nom. O.D.: 5.9mm

Sheath: LSOH

Bend Radius: 4X O.D.

Operating Temperature: -25°C to +60°C

Plug

Minimum operating life:

750 insertion cycles

RJ45 Plug and Boot Material:

Clear polycarbonate (PC)

Contact Material:

0.35mm thick copper alloy

Contact Plating: Selective gold

RJ45 Plug Dimensions compliant with:

ISO/IEC 60603-7-4 and FCC 47 Part 68

Electrical

Max voltage: 150 VAC (max)

Max current: 1.5A @ 25°C

PoE

Our PowerCat 6 system is suitable for PoE applications as defined below:

IEEE 802.3bt from Type 1 to Type 4, and CISCO
UPoE+

Notes:

For new installations of PoE Type 3 / Class 5 and above that wish to be eligible for the Molex 25 year Application Assurance Warranty, we require Category 6A cable to be used throughout.

To confirm your PoE / RP3 cabling design is eligible for the Molex 25 year Application Assurance Warranty, your design must be verified and validated with the Molex PoE Calculator. Read more

<https://www.molexces.com/poe-calculator>

Molex recommends that the PoE feature on an individual switch port is power disabled prior to unplugging the associated powered Device.

Molex recommends that the full range of PowerCat 6 products be used in a system to maximize cabling and PoE performance

Details on Molex requirements for Warranty can be found at

<https://www.molexces.com/about-us/our-warranty/>

www.molexces.com/products/copper/cat6/

PowerCat 6 U/UTP Patch Cord

ORDERING INFORMATION

Order No.	SAP No.	Description
PCD-02130-**-	Consult Molex	PowerCat 6 U/UTP Patch Cord LS0H 0.25m #
PCD-02000-**-	Consult Molex	PowerCat 6 U/UTP Patch Cord LS0H 0.5m #
PCD-02001-**-	Consult Molex	PowerCat 6 U/UTP Patch Cord LS0H 1m
PCD-02002-**-	Consult Molex	PowerCat 6 U/UTP Patch Cord LS0H 1.5m
PCD-02003-**-	Consult Molex	PowerCat 6 U/UTP Patch Cord LS0H 2m
PCD-02005-**-	Consult Molex	PowerCat 6 U/UTP Patch Cord LS0H 3m
PCD-02009-**-	Consult Molex	PowerCat 6 U/UTP Patch Cord LS0H 5m
PCD-02013-**-	Consult Molex	PowerCat 6 U/UTP Patch Cord LS0H 7m
PCD-02019-**-	Consult Molex	PowerCat 6 U/UTP Patch Cord LS0H 10m
PCD-02029-**-	Consult Molex	PowerCat 6 U/UTP Patch Cord LS0H 15m
PCD-02039-**-	Consult Molex	PowerCat 6 U/UTP Patch Cord LS0H 20m

Insert color code in place of ** in part number when ordering Patch Cords:
0C=Red, 0E=Gray, 0H=Blue, 0J=Green, 0K=Yellow, 0W=White, 0P=Purple, 0N=Orange, BK=Black

Please note: Molex manufactures patch cords shorter than 1m. These cords can be used for channel or equipment interconnect, however it is important to note that shorter cords do not meet the transmission test requirements outlined in the International Standards due to their reduced length. Molex tests these shorter cords for mechanical and wiremap compliance.

www.molexces.com/products/copper/cat6/