

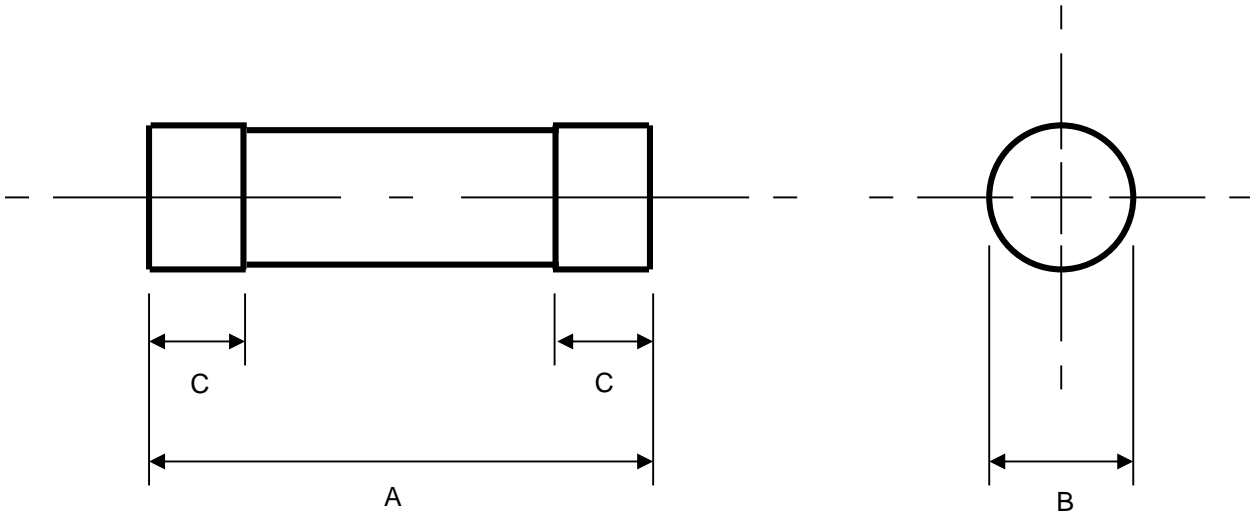
# **FUSEMASTER<sup>TM</sup>**

## **2258F SERVICE FUSES**

TECHNICAL SPECIFICATIONS FOR TYPES "2258F" HOUSE  
SERVICE CUT-OUT FUSE LINKS COMPLYING WITH  
AS2005, IEC269-1, AS/NZS 60269-2.1

RATED VOLTAGES	415VAC
CURRENT RATINGS	20A to 100A
RATED BREAKING CAPACITY	50kA
FUSING FACTOR	Class Q1 (not exceeding 1.5)
OUTLINE DIMENSIONS	TS001
TIME/CURRENT CHARACTERISTICS	TS002
POWER DISSIPATION VALUES	TS003

# FUSEMASTER®

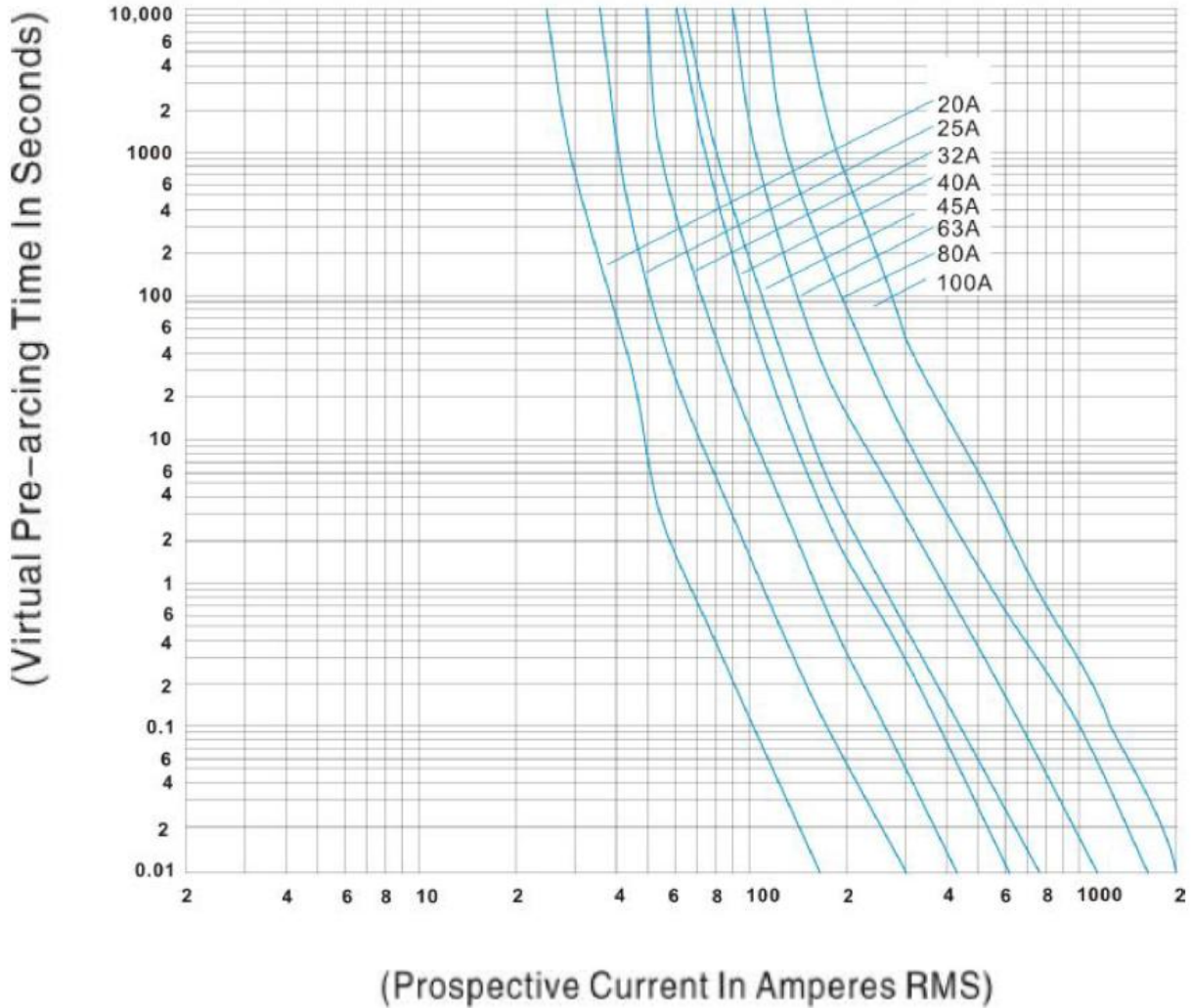


RATED BREAKING CAPACITY: 50kA at 415V AC

Part Number	Rated Voltage (V)	Current Rating (A)	Dimensions (mm)		
			A	B	C
2258F	415	20, 25, 32, 40, 45A, 63, 80, 100	57 ± 0.2	22.2 ± 0.1	16 ± 0.1

OUTLINE DIMENSIONS TYPE 2258F CUT-OUT FUSE LINKS TO AS2005, IEC269-1 & AS/NZS60269-2.1		SCALE	-
		DATE	01/02/2014
		DRAWN	TECH-JINTC
ART. No.	FUSEMASTER	APPROVED	GM-FUS
<b>TS001</b>		ALTERATION	-

# FUSEMASTER®



TIME / CURRENT CHARACTERISTICS 20A , 25A , 32A, 40A, 45A, 63A, 80A, 100A TYPE 2258F CUT-OUT FUSE LINKS TO AS2005, IEC269-1 & AS/NZS60269-2.1		SCALE	-
		DATE	01/02/2014
		DRAWN	TECH-JINTC
ART. No.	FUSEMASTER	APPROVED	GM-FUS
<b>TS002</b>		ALTERATION	-

# **FUSEMASTER<sup>®</sup>**

Part Number	Breaking Capacity (kA @ 415VAC)	Power Dissipation (W)	Unit Weight (g)
2258F-20	50	2.2	50
2258F-25	50	3.5	50
2258F-32	50	3.6	50
2258F-40	50	4.2	50
2258F-45	50	4.3	50
2258F-50	50	4.5	50
2258F-63	50	5.0	50
2258F-80	50	5.5	50
2258F-100	50	5.9	50

POWER DISSIPATION VALUES TYPE 2258F CUT-OUT FUSE LINKS TO AS2005, IEC269-1 & AS/NZS60269-2.1		SCALE	-
		DATE	01/02/2014
		DRAWN	TECH-JINTC
ART. No.	<b>FUSEMASTER</b>	APPROVED	GM-FUS
<b>TS003</b>		ALTERATION	-