

BMP[®]71

LABEL PRINTER

Thousands of Applications.
Hundreds of Labels.
One Label Printer.



Introducing the BMP[®]71 Label Printer - the one way to faster, easier label printing.

The BMP[®]71 combines the best features and functionalities of Brady's portable label printers into one easy-to-use, top-of-the-line solution. All your major wire & cable, safety & facility and asset & component identification needs are satisfied in one printer.

One Source for Label Materials

Choose from 30 different material types and over 400 label parts - all designed with Brady's industrial strength durability. Add all of the materials from the BMP[®]61 and the HandiMark[®] Portable Label Maker and your label options are endless!

Saves Time with Foolproof Label Design & High Speed Print

At 38mm per second, the BMP[®]71 printer has one of the fastest print speed on the portable printer market. But that's not all. With built-in design wizards for electrical, voice / datacomm and general ID, material recognition technology and storage space for over 100,000 label files, this printer can cut label design time in half.

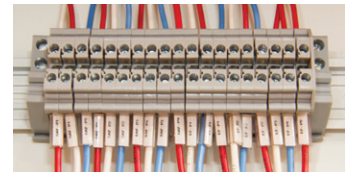
Cuts Material Waste - Preview Labels As You Create Them!

With a large, full colour graphical display, the BMP[®]71 printer shows you exactly what your label will look like as you're creating it - so there's no guesswork or need for "test labels".

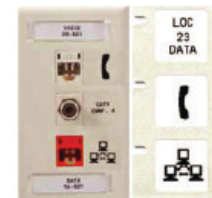
For demo videos and information on label and ribbon materials, visit www.bradyid.com.au/bmp71



SAFETY & FACILITY ID



DURASLEEVE™ LABELS



DIE CUT LABELS



CONTROL PANEL LABELS



PIPE MARKERS

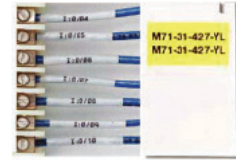


GLOW IN THE DARK TAPE

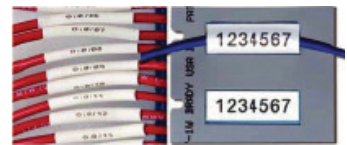


BMP®71 Printer features include:

- ▶ Large, full colour graphical display shows:
 - Label material and ribbon part number
 - Label colour and size, including the amount of remaining material
 - Font size, bold, italics, underline, subscripts and more
 - Application templates
 - Multi-area print areas
 - Remaining battery charge
- ▶ Hundreds of symbols and graphics including barcodes
- ▶ Multiple font sizes and auto font size
- ▶ Frame, mirror print and vertical print
- ▶ Sequences and time/date stamp



SELF LAMINATING LABELS



**PERMASTRIPE™
HEAT-SHRINK SLEEVES**

Use with **Brady Workstation Safety Facility Identification (SFID) Suite Software** for additional graphics and templates for signs, labels, pipe markers and tags - perfect for 5S, TPM and lean visuals.

Use with **LabelMark™ Label Design Software** to create labels for asset ID, component marking, voice / datacomm labelling, wire markers and more.

For demo videos and information on label and ribbon materials, visit www.bradyid.com.au/bmp71

PART NO.	DESCRIPTION
115158	BMP71 Printer* with LabelMark software
872044	BMP71 Printer* with Workstation SFID Suite
114881	Hard case
150619	Soft case
871843	AC adaptor
871844	Quick charger
114885	Battery
114886	Cleaning kit
147998	TLS/Handimark Media Adaptor
103788	USB Cable



*Label printer ships with Hardcase, Charger/AC Adapter, 1 Roll of M7-31-423 White Die Cut Labels, 1 R6000 Black Ribbon Cartridge, Roll Adapter, USB Cable, Quickstart Guide, a CD including the Printer Driver, Users Guide and Tutorial.

© 2020 Brady Australia Pty Ltd. All Rights Reserved.

