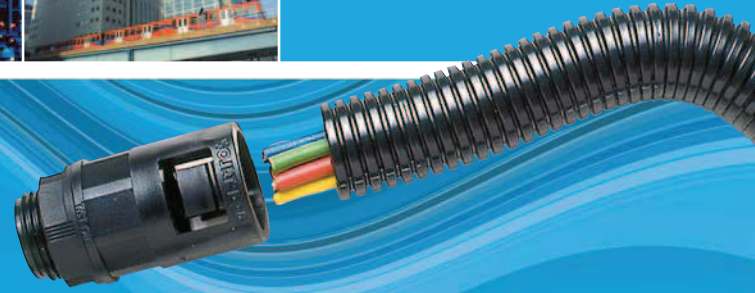


Non-metallic systems

Quick Selection Guide

Quick Selection Guide - Non-metallic systems

Type	TYPE PA LIGHTWEIGHT CONDUIT	TYPE PA NEW LIGHTWEIGHT SLIT CONDUIT	TYPE PA STANDARD WEIGHT CONDUIT	TYPE PA HEAVYWEIGHT CONDUIT	TYPE PI NEW LIGHTWEIGHT CONDUIT	TYPE PI STANDARD WEIGHT CONDUIT	TYPE PI HEAVYWEIGHT CONDUIT	TYPE PR STANDARD WEIGHT CONDUIT	TYPE PADL NEW STANDARD WEIGHT CONDUIT	TYPE CP NEW MEDIUM WEIGHT CONDUIT	TYPE KF NEW MEDIUM WEIGHT DRAW-WIRED CONDUIT	TYPE KF LIGHTWEIGHT CONDUIT	TYPE KF STANDARD WEIGHT CONDUIT	TYPE KF HEAVY WEIGHT CONDUIT	TYPE PP MEDIUM WEIGHT CONDUIT	TYPE XF STANDARD WEIGHT CONDUIT	TYPE RF NEW STANDARD WEIGHT CONDUIT	TYPE PK LIGHTWEIGHT CONDUIT	TYPE PKTC LIGHTWEIGHT CONDUIT	TYPE PKSS LIGHTWEIGHT CONDUIT	TYPE PRTC STANDARD WEIGHT CONDUIT	TYPE PRSS STANDARD WEIGHT CONDUIT
Example																						
Conduit Material	PAG	PAG	PAG	PAG	Pe	PAT1	PAT1	PAG	PAG	CPe	PP	PVCu	PVCu	PVCu	PP	PVCu	PVCu	PK	PK	PK	PAG	PAG
Covering/Overbraid																Plasticised PVC	Plasticised PVC		Tinned Copper	Stainless Steel	Tinned Copper	Stainless Steel
IP RATING - (with appropriate fitting)	IP40	IP40	IP40	IP40	IP40	IP40	IP40	IP40	IP40	IP40	IP65	IP66	IP66	IP66	IP67	IP67	IP67	IP68	IP68	IP68	IP68	IP68
Static Temp - Min Max	-40 °C +120 °C	-40 °C +120 °C	-40 °C +120 °C	-40 °C +120 °C	-40 °C +120 °C	-50 °C +110 °C	-50 °C +110 °C	-40 °C +120 °C	-40 °C +120 °C	-45 °C +135 °C	-5 °C +60 °C	-5 °C +60 °C	-5 °C +60 °C	-5 °C +60 °C	-20 °C +90 °C	-5 °C +60 °C	-20 °C +60 °C	-60 °C +260 °C	-60 °C +260 °C	-60 °C +260 °C	-40 °C +120 °C	-40 °C +120 °C
UV Resistance	Very High	Very High	Very High	Very High	Very High	Very High	Very High	Very High	Very High	Very High	High	High	High	High	Medium	High	High	Very High	Very High	Very High	Very High	Very High
Flexibility	High	High	High	Medium	High	Very High	High	High	Medium	Very High	Medium	Pliable	Pliable	Pliable	High	Very High	Medium	High	High	High	High	High
Fatigue Life	High	High	High	Medium	High	Very High	Very High	Medium	Medium	Very High	Low	Low	Low	Low	Medium	Medium	Medium	High	High	High	Medium	Medium
Low Fire Hazard			Standard	Standard				Enhanced	Standard	Standard								Super	Super	Super	Enhanced	Enhanced
Halogen Free	●	●	●	●	●	●	●	●	●	●					●			●	●	●	●	●
Self Extinguishing	●	●	●	●	●	●	●	●	●	●		●	●	●		●	●	●	●	●	●	●
EMI Screen																			High	Standard	High	Standard
High Mechanical Strength																			●	●	●	●
High Abrasion Resistance			●	●				●	●									●	●	●	●	●
Approvals																						
Key Application																						
Page Number	14	14	14	14	15	15	15	16	16	16	37	37	37	37	39	40	40	46	46	46	47	47



Non-metallic systems

Conduit, Fittings & Accessories

Range Overview

Adaptaflex have more than 20 different types of non metallic conduit systems all providing different technical properties for your cable management applications. Conduit is available in many different materials, ranging from lightweight to heavyweight with nominal conduit sizes from 10mm right up to the Jumbo size of 106mm.

For more demanding applications there is a wide-ranging high specification series of conduit with enhanced low fire hazard properties, EMI screening and incorporating high fatigue life. Overbraided options are available for use in abrasive environments.

Standard product is manufactured in a wide range of materials. The corrugated construction provides good flexibility and low weight. In addition a range of fittings are specifically designed to maintain system

integrity including the popular and easy to fit Adaptaflex system. Fitting types are available in straight, 90°, 45°, with metric, PG, PF, & NPT threads.

Many of our conduit systems have industry recognised approvals including British Kitemark, CE Approval, UL 1696, NF, LUL, DB, Lloyds Register amongst others.

Advantages

- Non metallic conduits do not corrode (rust)
- Lighter in weight
- Quicker to install (cut & assemble fittings)
- Wider variety of fittings - much larger solutions choice
- Better fatigue life
- Return to shape

System approvals available:



Adaptalok ATS™

The ultimate & unique fitting from Adaptaflex - See page 24



Ranges include:



Non-metallic systems

TYPE PA, & PI Non-metallic conduit



PRODUCT CHARACTERISTICS

To order quote part no, colour & reel length - e.g. PAFL13/BL/50M

Type
Description
Materials
Example

TYPE PA LIGHTWEIGHT CONDUIT

Polyamide (Nylon) 6
Colour Black (BL) & Grey (GR).



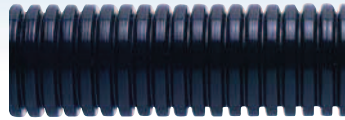
TYPE PA LIGHTWEIGHT SLIT CONDUIT

Polyamide (Nylon) 6
Colour Black (BL) only.



TYPE PA STANDARD WEIGHT CONDUIT

Polyamide (Nylon) 6
Colour Black (BL) & Grey (GR).



TYPE PA HEAVYWEIGHT CONDUIT

Polyamide (Nylon) 6
Colour Black (BL) & Grey (GR).



NOMINAL CONDUIT SIZE (mm)	OUTSIDE DIAMETER (mm)	NW CONDUIT SIZE (mm)	CONDUIT PITCH (mm)	F = FINE (C = COARSE)
10	10.0	8.5	F	
13	13.0	10.0	F	
16	15.8	13.0	F	
21	21.2	17.0	F	
21	21.2	17.0	C	
28	28.5	23.0	F	
28	28.5	23.0	C	
34	34.5	29.0	F	
34	34.5	29.0	C	
42	42.5	36.0	C	
54	54.5	48.0	C	
80	79.3	70.0	C	
106	106.0	95.0	C	

PART NUMBER	INSIDE DIAMETER (mm)	MINIMUM BEND RADIUS (mm)	REEL LENGTH (m)
-	-	-	-
PAFL13	10.0	25	50
PAFL16	11.9	35	50
PAFL21	16.8	45	50
-	-	-	-
-	-	-	-
PACL28	22.2	50	50
-	-	-	-
PACL34	27.9	60	50
PACL42	35.2	65	25
PACL54	46.9	75	25
-	-	-	-
-	-	-	-

PART NUMBER	INSIDE DIAMETER (mm)	MINIMUM BEND RADIUS (mm)	REEL LENGTH (m)
-	-	-	-
PAFL13-S	10.0	25	50
PAFL16-S	11.9	35	50
PAFL21-S	16.8	45	50
-	-	-	-
-	-	-	-
PACL28-S	22.2	50	50
-	-	-	-
PACL34-S	27.9	60	50
PACL42-S	35.2	65	25
PACL54-S	46.9	75	25
-	-	-	-
-	-	-	-

PART NUMBER	INSIDE DIAMETER (mm)	MINIMUM BEND RADIUS (mm)	REEL LENGTH (m) (Black)	REEL LENGTH (m) (Grey)
PAFS10	6.5	15	50	50
PAFS13	9.6	25	50	50
PAFS16	11.8	35	10, 25, 50	50
PAFS21	16.5	45	10, 25, 50	50
-	-	-	-	-
PAFS28	22.6	50	10, 25, 50	50
PACS28	21.7	50	10, 25, 50	50
PAFS34	28.8	60	10, 25, 50	50
PACS34	27.7	60	10, 25, 50	50
PACS42	35.2	65	10, 25	25
PACS54	46.5	75	10, 25	25
PACS80	67.0	160	10	10
PACS106	91.5	210	10	10

PART NUMBER	INSIDE DIAMETER (mm)	MINIMUM BEND RADIUS (mm)	REEL LENGTH (m)
-	-	-	-
PAFH13	9.0	35	50
PAFH16	11.3	45	50
-	-	-	-
PACH21	14.5	60	50
-	-	-	-
PACH28	21.3	70	50
-	-	-	-
PACH34	26.8	75	50
PACH42	34.6	90	25
PACH54	46.0	95	25
-	-	-	-
-	-	-	-

IP Rating with appropriate fitting

- IP40
- IP65
- IP66
- IP67
- IP68
- NEW IP69k

Temperature Range

For use with following fittings; Adaptalok, ATS, Adapting & Adaptaseal

Adapting Fittings
n/a
Adaptalok, ATS or Adaptaseal Fittings
Adaptalok + ALS Seal or ATS, Adaptaseal Fittings
Adaptalok + ALS Seal or ATS, Adaptaseal Fittings
n/a

Static Applications: -40 °C to +120 °C
Moving Applications: -5 °C to +120 °C

Very High

High Flexibility - High Fatigue Life

Self Extinguishing
Halogen Free



Approvals

System Applications

Machinery (Low mechanical protection)
Buildings (No fire risk)

For use with following fittings; Adapting

n/a
n/a
n/a
n/a
n/a
n/a

Static Applications: -40 °C to +120 °C
Moving Applications: -5 °C to +120 °C

Very High

High Flexibility - High Fatigue Life

Self Extinguishing
Halogen Free



Retrofit Protection

For use with following fittings; Adaptalok, ATS, Adapting, Adaptaseal & Jumbo

Adapting & Jumbo Fittings
Jumbo Fittings + SK Seal
Adaptalok, ATSor Adaptaseal Fittings
Adaptalok + ALS Seal or ATS, Adaptaseal Fittings
Adaptalok + ALS Seal or ATS, Adaptaseal Fittings
Adaptalok Fittings + ALS Seal or ATS

Static Applications: -40 °C to +120 °C
Moving Applications: -5 °C to +120 °C

Very High

High Flexibility - High Fatigue Life



Machinery
Public Buildings
Rail

For use with following fittings; Adaptalok, ATS, Adapting & Adaptaseal

Adapting Fittings
n/a
Adaptalok, ATS or Adaptaseal Fittings
Adaptalok + ALS Seal or ATS, Adaptaseal Fittings
Adaptalok + ALS Seal or ATS, Adaptaseal Fittings
n/a

Static Applications: -40 °C to +120 °C
Moving Applications: -5 °C to +120 °C

Very High

Medium Flexibility - Medium Fatigue Life



Rail
Underground
Heavy Industrial



PRODUCT CHARACTERISTICS

Type
Description
Materials
Example

TYPE PI LIGHTWEIGHT CONDUIT

Polyester
Colour Black (BL) only.



TYPE PI STANDARD WEIGHT CONDUIT

Modified Polyamide 11
Colour Black (BL) & Grey (GR).



TYPE PI HEAVYWEIGHT CONDUIT

Modified Polyamide 11
Colour Black (BL) only.



NOMINAL CONDUIT SIZE (mm)	OUTSIDE DIAMETER (mm)	NW CONDUIT SIZE (mm)	CONDUIT PITCH
10	10.0	8.5	F
13	13.0	10.0	F
16	15.8	13.0	F
21	21.2	17.0	F
21	21.2	17.0	C
28	28.5	23.0	C
34	34.5	29.0	C
42	42.5	36.0	C
54	54.5	48.0	C
80	79.3	70.0	C
106	106.0	95.0	C

F = FINE (= COARSE)

PART NUMBER	INSIDE DIAMETER (mm)	MINIMUM BEND RADIUS (mm)	REEL LENGTH (m)
-	-	-	-
PIFL13	10.0	25	50
PIFL16	11.9	30	50
PIFL21	16.8	35	50
-	-	-	-
PICL28	22.2	45	50
PICL34	27.9	55	25
PICL42	35.7	60	25
PICL54	46.9	70	25
-	-	-	-
-	-	-	-

PART NUMBER	INSIDE DIAMETER (mm)	MINIMUM BEND RADIUS (mm)	REEL LENGTH (m)
PIFS10	6.2	15	50
PIFS13	9.9	25	50
PIFS16	11.7	30	50
PIFS21	16.6	35	50
-	-	-	-
PICS28	21.7	45	50
PICS34	27.7	55	25
PICS42	35.5	60	25
PICS54	46.6	70	25
PICS80	67.0	160	10
PICS106	91.0	210	10

PART NUMBER	INSIDE DIAMETER (mm)	MINIMUM BEND RADIUS (mm)	REEL LENGTH (m)
-	-	-	-
PIFH13	9.7	30	50
PIFH16	11.5	35	50
-	-	-	-
PICH21	15.3	40	50
PICH28	21.5	50	50
PICH34	27.5	60	25
PICH42	35.3	65	25
PICH54	46.4	75	25
-	-	-	-
-	-	-	-

IP Rating with appropriate fitting

IP40

IP65

IP66

IP67

IP68

NEW IP69k

Temperature Range

UV Resistance

Flexibility & Fatigue Life

Fire Performance & EMI Screen

Approvals

System Applications

For use with following fittings;
Adaptalok, ATS, Adapting & Adaptaseal

Adapting Fittings

n/a

Adaptalok or Adaptaseal Fittings

Adaptalok + ALS Seal or Adaptaseal Fittings

Adaptalok + ALS Seal or Adaptaseal Fittings

n/a

Static Applications: -25 °C to +120 °C
Moving Applications: -5 °C to +105 °C

Very High

High Flexibility - High Fatigue Life

Self Extinguishing
Halogen Free



Robots
Continual Flexing Applications

For use with following fittings;
Adaptalok, ATS, Adapting, Adaptaseal & Jumbo

Adapting & Jumbo Fittings

Jumbo Fittings + SK Seal

Adaptalok, ATS or Adaptaseal Fittings

Adaptalok + ALS Seal or ATS, Adaptaseal Fittings

Adaptalok + ALS Seal or ATS, Adaptaseal Fittings

Adaptalok Fittings + ALS Seal or ATS

Static Applications: -50 °C to +110 °C
Moving Applications: -45 °C to +120 °C

Very High

Very High Flexibility - Very High Fatigue Life

Self Extinguishing
Halogen Free



NF

Rail
Robots
Low Temperature Flexing

For use with following fittings;
Adaptalok, ATS, Adapting & Adaptaseal

Adapting Fittings

n/a

Adaptalok, ATS or Adaptaseal Fittings

Adaptalok + ALS Seal or ATS, Adaptaseal Fittings

Adaptalok + ALS Seal or ATS, Adaptaseal Fittings

n/a

Static Applications: -50 °C to +110 °C
Moving Applications: -45 °C to +120 °C

Very High

High Flexibility - Very High Fatigue Life

Self Extinguishing
Halogen Free

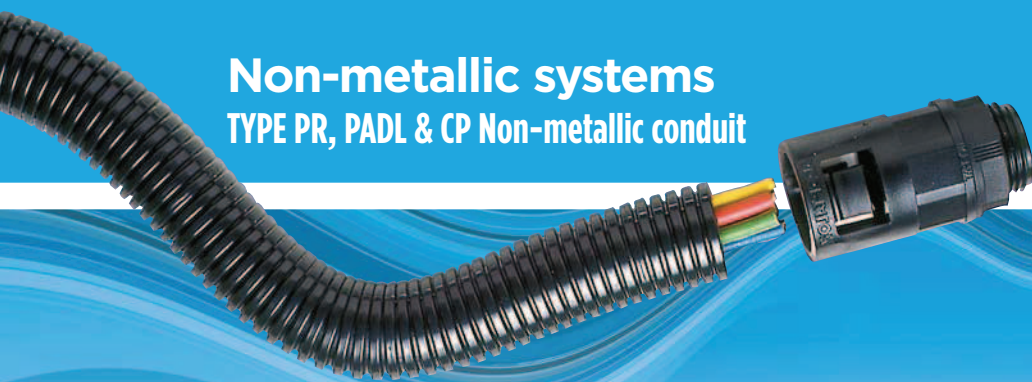


NF

Rail
High Impact Resistance
Low Temperature Flexing

Non-metallic systems

TYPE PR, PADL & CP Non-metallic conduit



PRODUCT CHARACTERISTICS

To order quote part no, colour & reel length - e.g. PRFS13/BL/25M

Type
Description
Materials
Example

TYPE PR STANDARD WEIGHT CONDUIT

Modified Polyamide (Nylon 6)
Colour Black (BL) only.



TYPE CP MEDIUM WEIGHT CONDUIT

Polyester
Colour Black (BL) only.



TYPE PADL STANDARD WEIGHT CONDUIT

Modified Polyamide (Nylon 6)
Colour Black (BL) only.



TYPE A - ADAPTALOK

STRAIGHT FITTING - FIXED EXTERNAL THREAD
For insertion into threaded entries & knockouts.
Polyamide (Nylon 66)
Colour Black (BL) & Grey (GR).



NOMINAL CONDUIT SIZE (mm)	OUTSIDE DIAMETER (mm)	NW CONDUIT SIZE (mm)	CONDUIT PITCH (mm)	F = FINE, C = COARSE
13	13.0	10.0	F	
16	15.8	13.0	F	
17	17.8	17.0	C	
21	21.2	17.0	F	
21	21.2	17.0	C	
22	21.8	20.0	C	
28	28.5	23.0	C	
34	34.5	29.0	C	
42	42.5	36.0	C	
54	54.5	48.0	C	
80	79.3	70.0	C	
106	106.0	95.0	C	

PART NUMBER	INSIDE DIAMETER (mm)	MINIMUM BEND RADIUS (mm)	REEL LENGTH (m)
PRFS13	9.4	35	50
PRFS16	11.7	45	50
PRFS21	16.6	60	50
PRCS21	14.7	60	50
-	-	-	-
PRCS28	21.7	70	50
PRCS34	27.7	75	50
PRCS42	35.1	90	25
PRCS54	46.6	95	25
PRCS80	67.3	180	10
PRCS106	91.0	240	10

PART NUMBER	INSIDE DIAMETER (mm)	MINIMUM BEND RADIUS (mm)	REEL LENGTH (m)
CPFM13	9.5	25	50
CPFM16	11.3	30	50
-	-	-	-
CPFM21	16.0	35	50
-	-	-	-
-	-	-	-
CPCM28	21.3	45	50
CPCM34	27.2	55	50
CPCM42	34.2	60	25
CPCM54	46.0	70	25
-	-	-	-
-	-	-	-

PART NUMBER	INSIDE DIAMETER (mm)	MINIMUM BEND RADIUS (mm)	REEL LENGTH (m) (Black)
-	-	-	-
-	-	-	-
PADL17	13.5	45	50
-	-	-	-
-	-	-	-
PADL22	16.6	60	50
PADL28	22.6	70	25, 50
PADL34	27.7	75	25, 50
PADL42	35.2	80	10, 25
-	-	-	-
-	-	-	-
-	-	-	-

NOMINAL CONDUIT SIZE (mm)	NPT THREAD	PART NUMBER
17	1/2	ALD17/050/A
22	1/2	ALD22/050/A
28	3/4	ALD28/075/A
34	1	ALD34/100/A
42	1 1/4	ALD42/125/A

For use only with PADL conduit, to maintain the UL 1696 approval

TYPE C90 - ADAPTALOK

90° ELBOW FITTING - FIXED EXTERNAL THREAD
For insertion into knockouts using a locknut.
Polyamide (Nylon 66)
Colour Black (BL) & Grey (GR).



NOMINAL CONDUIT SIZE (mm)	NPT THREAD	PART NUMBER
17	1/2	ALD17/050/C90
22	1/2	ALD22/050/C90
28	3/4	ALD28/075/C90
34	1	ALD34/100/C90
42	1 1/4	ALD42/125/C90

For use only with PADL conduit, to maintain the UL 1696 approval

Note.
Other fittings available. Contact our Sales Office for further details.

IP Rating with appropriate fitting

IP40

IP65

IP66

IP67

IP68

NEW IP69k

Temperature Range

Static Applications: -40 °C to +120 °C
Moving Applications: -5 °C to +120 °C

UV Resistance

Very High

Flexibility & Fatigue Life

High Flexibility - Medium Fatigue Life

Fire Performance & EMI Screen



Approvals



System Applications

Railways
Underground
Public Buildings

Railways
Underground
Public Buildings

Machinery
Public Buildings

Adaptalok non-metallic system

ONE-PIECE PUSH-ON LIQUID TIGHT IP66 FITTINGS

PRODUCT CHARACTERISTICS

Type

TYPE A - ADAPTALOK

Description

STRAIGHT FITTING - FIXED EXTERNAL THREAD

For insertion into threaded entries & knockouts. Locknut supplied with METRIC THREAD ONLY

Materials

Polyamide (Nylon) 66

Colour Black (BL) & Grey (GR).

Example



To order quote part no & colour - e.g. AL10/M12/A/BL

TYPE C90 - ADAPTALOK

90° ELBOW FITTING - FIXED EXTERNAL THREAD

For insertion into knockouts using a locknut. Locknut supplied with METRIC THREAD ONLY

Polyamide (Nylon) 66

Colour Black (BL) & Grey (GR).



NOMINAL CONDUIT SIZE (mm)

	METRIC THREAD	PART NUMBER	PG THREAD	PART NUMBER	PF THREAD	PART NUMBER	NPT THREAD	PART NUMBER
10	M12	AL10/M12/A	PG7	AL10/PG7/A	1/4	AL10/PF025/A	-	-
10	-	-	PG9	AL10/PG9/A	-	-	-	-
13	M16	AL13/M16/A	PG9	AL13/PG9/A	3/8	AL13/PF038/A	3/8	AL13/038/A
13	M20	AL13/M20/A	PG11	AL13/PG11/A	-	-	-	-
13	-	-	PG13.5	AL13/PG13/A	-	-	-	-
16	M16	AL16/M16/A	PG9	AL16/PG9/A	3/8	AL16/PF038/A	3/8	AL16/038/A
16	M20	AL16/M20/A	PG11	AL16/PG11/A	1/2	AL16/PF050/A	1/2	AL16/050/A
16	-	-	PG13.5	AL16/PG13/A	-	-	-	-
16	-	-	PG16	AL16/PG16/A	-	-	-	-
21	M20	AL21/M20/A	PG11	AL21/PG11/A	1/2	AL21/PF050/A	1/2	AL21/050/A
21	-	-	PG13.5	AL21/PG13/A	-	-	-	-
21	M25	AL21/M25/A	PG16	AL21/PG16/A	-	-	-	-
28	M25	AL28/M25/A	PG21	AL28/PG21/A	3/4	AL28/PF075/A	3/4	AL28/075/A
28	M32	AL28/M32/A	-	-	-	-	-	-
34	M32	AL34/M32/A	PG29	AL34/PG29/A	1	AL34/PF100/A	1	AL34/100/A
34	M40	AL34/M40/A	-	-	-	-	-	-
42	M40	AL42/M40/A	PG36	AL42/PG36/A	1 1/4	AL42/PF125/A	1 1/4	AL42/125/A
42	M50	AL42/M50/A	-	-	-	-	-	-
54	M50	AL54/M50/A	PG48	AL54/PG48/A	1 1/2	AL54/PF150/A	1 1/2	AL54/150/A
54	M63	AL54/M63/A	-	-	2	AL54/PF200/A	-	-

	METRIC THREAD	PART NUMBER	PG THREAD	PART NUMBER	PF THREAD	PART NUMBER	NPT THREAD	PART NUMBER
M12	AL10/M12/C90	PG7	AL10/PG7/C90	-	-	-	-	-
M16	AL13/M16/C90	PG9	AL13/PG9/C90	3/8	AL13/PF038/C90	3/8	AL13/038/C90	-
-	-	-	-	-	-	-	-	-
-	-	-	-	-	-	-	-	-
M16	AL16/M16/C90	PG9	AL16/PG9/C90	3/8	AL16/PF038/C90	3/8	AL16/038/C90	-
M20	AL16/M20/C90	PG11	AL16/PG11/C90	1/2	AL16/PF050/C90	1/2	AL16/050/C90	-
-	-	PG13.5	AL16/PG13/C90	-	-	-	-	-
-	-	-	-	-	-	-	-	-
M20	AL21/M20/C90	PG13.5	AL21/PG13/C90	1/2	AL21/PF050/C90	1/2	AL21/050/C90	-
-	-	PG16	AL21/PG16/C90	-	-	-	-	-
-	-	-	-	-	-	-	-	-
M25	AL28/M25/C90	PG21	AL28/PG21/C90	3/4	AL28/PF075/C90	3/4	AL28/075/C90	-
-	-	-	-	-	-	-	-	-
M32	AL34/M32/C90	PG29	AL34/PG29/C90	1	AL34/PF100/C90	1	AL34/100/C90	-
-	-	-	-	-	-	-	-	-
M40	AL42/M40/C90	PG36	AL42/PG36/C90	1 1/4	AL42/PF125/C90	1 1/4	AL42/125/C90	-
M50	AL54/M50/C90	PG48	AL54/PG48/C90	1 1/2	AL54/PF150/C90	1 1/2	AL54/150/C90	-
M63	AL54/M63/C90	-	-	2	AL54/PF200/C90	-	-	-

IP Rating with appropriate fitting

IP40

n/a

IP65

n/a

IP66

Type PA, PI, CP & PR conduit

IP67

Type PA, PI, CP & PR conduit + ALS Seal

IP68

Type PA, PI, CP & PR conduit + ALS Seal

NEW IP69k

Type PA, PI, CP & PR conduit + ALS Seal

Temperature Range

Static Applications: -50 °C to +120 °C
Moving Applications: -45 °C to +120 °C

Fitting Characteristics



Approvals



For use with following conduit;
Type PA, PI, CP & PR

n/a

n/a

Type PA, PI, CP & PR conduit

Type PA, PI, CP & PR conduit + ALS Seal

Type PA, PI, CP & PR conduit + ALS Seal

Type PA, PI, CP & PR conduit + ALS Seal

Static Applications: -50 °C to +120 °C
Moving Applications: -45 °C to +120 °C



Adaptalok non-metallic system

ONE-PIECE PUSH-ON LIQUID TIGHT IP66 FITTINGS



PRODUCT CHARACTERISTICS

To order quote part no & colour - e.g. AL13/M16/45/GR

Type
Description
Materials
Example

TYPE 45 - ADAPTALOK

45° ELBOW FITTING - FIXED EXTERNAL THREAD
For insertion into knockouts using a locknut.
Locknut supplied with METRIC THREAD ONLY

Polyamide (Nylon) 66
Colour Black (BL) & Grey (GR) .



PUSH-IN - ADAPTALOK

STRAIGHT - ONE PIECE COUPLER
Inserts into a 20mm knock-out, panel thickness up to 4mm, no locknut required

Polyamide (Nylon) 66
Colour Black (BL) & Grey (GR) .



3-WAY COUPLER

3-WAY PA66 FITTING
For coupling to corrugated flexible conduit

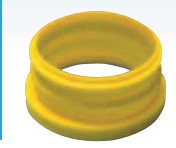
Polyamide (Nylon) 66
Colour Black (BL) & Grey (GR) .



INSERT SEAL

IP67/68/69k INSERT SEAL
Suitable for standard weight PA/PI/PR conduit Black or Grey.

Thermoplastic Elastomer
Colour Yellow (Y) only.



NOMINAL CONDUIT SIZE (mm)

- 13
- 16
- 16
- 17
- 21
- 21
- 22
- 28
- 34
- 42
- 54
- 54

METRIC THREAD	PART NUMBER	PG THREAD	PART NUMBER
M16	AL13/M16/45	PG9	AL13/PG9/45
M16	AL16/M16/45	PG11	AL16/PG11/45
M20	AL16/M20/45	PG13.5	AL16/PG13/45
-	-	-	-
M20	AL21/M20/45	PG13.5	AL21/PG13/45
-	-	PG16	AL21/PG16/45
-	-	-	-
M25	AL28/M25/45	PG21	AL28/PG21/45
M32	AL34/M32/45	PG29	AL34/PG29/45
M40	AL42/M40/45	PG36	AL42/PG36/45
M50	AL54/M50/45	PG48	AL54/PG48/45
M63	AL54/M63/45	-	-

PART NUMBER

-
-
- AL16/KM20/A
-
- AL21/KM20/A
-
-
-
-
-
-
-
-
-

NOMINAL CONDUIT SIZE COMBINATION

- 13X10X10
-
- 16X13X13
-
- 21X16X16
-
-
- 28X21X21
-
-
-
-
-
-

PART NUMBER

- AL131010/Y
-
- AL161313/Y
-
- AL211616/Y
-
-
- AL282121/Y
-
-
-
-
-
-

CONDUIT PITCH
F = FINE (= COARSE)

- F
- F
- F
- C
- F
- F
- C
- C
- C
- C
- C
- C
- C
- C

PART NUMBER

- ALS13/F
- ALS16/F
- ALS16/F
- ALS17/C
- ALS21/F
- ALS21/F
- ALS22/C
- ALS28/C
- ALS34/C
- ALS42/C
- ALS54/C
- ALS54/C

Note.
Seal needs to be inserted into the appropriate conduit to upgrade fitting system

IP Rating with appropriate fitting

- IP40
- IP65
- IP66
- IP67
- IP68
- NEW IP69k

Temperature Range

Fitting Characteristics

For use with following conduit;
Type PA, PI, CP & PR

- n/a
- n/a
- Type PA, PI, CP & PR conduit
- Type PA, PI, CP & PR conduit + ALS Seal
- Type PA, PI, CP & PR conduit + ALS Seal
- Type PA, PI, CP & PR conduit + ALS Seal

Static Applications: -50 °C to +120 °C
Moving Applications: -45 °C to +120 °C

For use with following conduit;
Type PA, PI, CP & PR

- n/a
- n/a
- n/a
- n/a
- n/a
- n/a

Static Applications: -50 °C to +120 °C
Moving Applications: -45 °C to +120 °C

For use with following conduit;
Type PA, PI, CP & PR

- n/a
- n/a
- Type PA, PI, CP & PR conduit
- Type PA, PI, CP & PR conduit + ALS Seal
- Type PA, PI, CP & PR conduit + ALS Seal
- Type PA, PI, CP & PR conduit + ALS Seal

Static Applications: -50 °C to +120 °C
Moving Applications: -45 °C to +120 °C

For use with following fittings;
Adaptalok

- n/a
- n/a
- n/a
- Adaptalok Fittings
- Adaptalok Fittings (1.1 bar 35mins)
- Adaptalok Fittings (DIN 40050)

Static Applications: -50 °C to +120 °C
Moving Applications: -45 °C to +120 °C

Approvals





PRODUCT CHARACTERISTICS

Type	TYPE FL/A - ADAPTALOK	TYPE FL/C90 - ADAPTALOK	TYPE FL/45 - ADAPTALOK	SWIVEL COUPLER
Description	STRAIGHT PANEL MOUNTING SWIVEL FLANGE with integral face seal.	90° ELBOW BODY - PANEL MOUNT FLANGE For panel mounting via 2 hole fixing & integral face seal.	45° PANEL MOUNTING SWIVEL FLANGE with integral face seal.	STRAIGHT PA66 BODY - SWIVEL COUPLER For coupling to corrugated flexible conduit.
Materials	Polyamide (Nylon) 66 Colour Black (BL) & Grey (GR) .	Polyamide (Nylon) 66 Colour Black (BL) & Grey (GR) .	Polyamide (Nylon) 66 Colour Black (BL) & Grey (GR) .	Polyamide (Nylon) 66 + Aluminium Colour Black (BL) only.
Example				
NOMINAL CONDUIT SIZE (mm)	PART NUMBER	PART NUMBER	PART NUMBER	PART NUMBER
13	-	AL13/FL/C90	-	AL13-AL13/A/000040
16	AL16/FL/A	AL16/FL/C90	AL16/FL/45	AL16-AL16/A/000040
21	AL21/FL/A	AL21/FL/C90	AL21/FL/45	AL21-AL21/A/000040
28	AL28/FL/A	AL28/FL/C90	AL28/FL/45	AL28-AL28/A/000040
34	-	AL34/FL/90*	-	AL34-AL34/A/000040
42	-	AL42/FL/90*	-	AL42-AL42/A/000040
54	AL54/FL/A	AL54/FL/90*	AL54/FL/45	AL54-AL54/A/006540
		*TYPE FL/90 - ADAPTALOK 90° ELBOW FITTING - PANEL MOUNT FLANGE For panel mounting via 4 hole fixing & integral face seal.		
				

IP Rating with appropriate fitting

IP40

IP65

IP66

IP67

IP68

NEW IP69k

Temperature Range

Fitting Characteristics

Approvals

For use with following conduit;
Type PA, PI, CP & PR

n/a

n/a

Type PA, PI, CP & PR conduit

Type PA, PI, CP & PR conduit + ALS Seal

Type PA, PI, CP & PR conduit + ALS Seal

Type PA, PI, CP & PR conduit + ALS Seal

Static Applications: -50 °C to +120 °C
Moving Applications: -45 °C to +120 °C



For use with following conduit;
Type PA, PI, CP & PR

n/a

n/a

Type PA, PI, CP & PR conduit

Type PA, PI, CP & PR conduit + ALS Seal

Type PA, PI, CP & PR conduit + ALS Seal

Type PA, PI, CP & PR conduit + ALS Seal

Static Applications: -50 °C to +120 °C
Moving Applications: -45 °C to +120 °C



For use with following conduit;
Type PA, PI, CP & PR

n/a

n/a

Type PA, PI, CP & PR conduit

Type PA, PI, CP & PR conduit + ALS Seal

Type PA, PI, CP & PR conduit + ALS Seal

Type PA, PI, CP & PR conduit + ALS Seal

Static Applications: -50 °C to +120 °C
Moving Applications: -45 °C to +120 °C



For use with following conduit;
Type PA, PI, CP & PR

n/a

n/a

Type PA, PI, CP & PR conduit

Type PA, PI, CP & PR conduit + ALS Seal

Type PA, PI, CP & PR conduit + ALS Seal

Type PA, PI, CP & PR conduit + ALS Seal

Static Applications: -50 °C to +120 °C
Moving Applications: -45 °C to +120 °C



Adaptalok non-metallic system

ONE-PIECE PUSH-ON LIQUID TIGHT IP66 FITTINGS WITH SWIVEL BRASS THREADS



PRODUCT CHARACTERISTICS

To order quote part no & colour - e.g. AL13/M16/SA/GR

Type

TYPE SA - ADAPTALOK

Description

STRAIGHT FITTING - SWIVEL EXTERNAL MALE THREAD
For insertion into threaded entries & knockouts.

Materials

Polyamide (Nylon) 66. Nickel plated brass thread.
Colour Black (BL) & Grey (GR) .

Example



TYPE CS90 - ADAPTALOK

90° ELBOW FITTING - SWIVEL EXTERNAL MALE THREAD
For insertion into threaded entries & knockouts.

Polyamide (Nylon) 66. Nickel plated brass thread.
Colour Black (BL) & Grey (GR) .



TYPE S45 - ADAPTALOK

45° ELBOW BODY - SWIVEL EXTERNAL MALE THREAD
For insertion into threaded entries & knockouts.

Polyamide (Nylon) 66. Nickel plated brass thread.
Colour Black (BL) & Grey (GR) .



NOMINAL CONDUIT SIZE (mm)

13
16
21
21
28
34
42
54
54

METRIC THREAD	PART NUMBER	PG THREAD	PART NUMBER
M16	AL13/M16/SA/	PG9	AL13/PG9/SA/
M16	AL16/M16/SA/	PG11	AL16/PG11/SA/
M20	AL21/M20/SA/	PG13.5	AL21/PG13/SA/
21	-	PG16	AL21/PG16/SA/
M25	AL28/M25/SA/	PG21	AL28/PG21/SA/
M32	AL34/M32/SA/	PG29	AL34/PG29/SA/
M40	AL42/M40/SA/	PG36	AL42/PG36/SA/
M50	AL54/M50/SA/	PG48	AL54/PG48/SA/
M63	AL54/M63/SA/	-	-

METRIC THREAD	PART NUMBER	PG THREAD	PART NUMBER
M16	AL13/M16/CS90/	PG9	AL13/PG9/CS90/
M16	AL16/M16/CS90/	PG11	AL16/PG11/CS90/
M20	AL21/M20/CS90/	PG13.5	AL21/PG13/CS90/
-	-	PG16	AL21/PG16/CS90/
M25	AL28/M25/CS90/	PG21	AL28/PG21/CS90/
M32	AL34/M32/CS90/	PG29	AL34/PG29/CS90/
M40	AL42/M40/CS90/	PG36	AL42/PG36/CS90/
M50	AL54/M50/CS90/	PG48	AL54/PG48/CS90/
M63	AL54/M63/CS90/	-	-

METRIC THREAD	PART NUMBER	PG THREAD	PART NUMBER
M16	AL13/M16/S45/	PG9	AL13/PG9/S45/
M16	AL16/M16/S45/	PG11	AL16/PG11/S45/
M20	AL21/M20/S45/	PG13.5	AL21/PG13/S45/
-	-	PG16	AL21/PG16/S45/
M25	AL28/M25/S45/	PG21	AL28/PG21/S45/
M32	AL34/M32/S45/	PG29	AL34/PG29/S45/
M40	AL42/M40/S45/	PG36	AL42/PG36/S45/
M50	AL54/M50/S45/	PG48	AL54/PG48/S45/
M63	AL54/M63/S45/	-	-

IP Rating with appropriate fitting

IP40

IP65

IP66

IP67

IP68

NEW IP69k

Temperature Range

Fitting Characteristics

Approvals

For use with following conduit;
Type PA, PI, CP & PR

n/a

n/a

Type PA, PI, CP & PR conduit

Type PA, PI, CP & PR conduit + ALS Seal

Type PA, PI, CP & PR conduit + ALS Seal

Type PA, PI, CP & PR conduit + ALS Seal

Static Applications: -50 °C to +120 °C

Moving Applications: -45 °C to +120 °C



For use with following conduit;
Type PA, PI, CP & PR

n/a

n/a

Type PA, PI, CP & PR conduit

Type PA, PI, CP & PR conduit + ALS Seal

Type PA, PI, CP & PR conduit + ALS Seal

Type PA, PI, CP & PR conduit + ALS Seal

Static Applications: -50 °C to +120 °C

Moving Applications: -45 °C to +120 °C



For use with following conduit;
Type PA, PI, CP & PR

n/a

n/a

Type PA, PI, CP & PR conduit

Type PA, PI, CP & PR conduit + ALS Seal

Type PA, PI, CP & PR conduit + ALS Seal

Type PA, PI, CP & PR conduit + ALS Seal

Static Applications: -50 °C to +120 °C

Moving Applications: -45 °C to +120 °C





PRODUCT CHARACTERISTICS

Type

TYPE SFA - ADAPTALOK

Description

STRAIGHT BODY - SWIVEL INTERNAL FEMALE THREAD
For attachment to external threads & other fittings.

Materials

Polyamide (Nylon) 66. Nickel plated brass thread.
Colour Black (BL) & Grey (GR).

Example



NOMINAL CONDUIT
SIZE (mm)

	METRIC THREAD	PART NUMBER	PG THREAD	PART NUMBER
13	M16	AL13/M16/SFA/	PG9	AL13/PG9/SFA/
16	M16	AL16/M16/SFA/	PG11	AL16/PG11/SFA/
21	M20	AL21/M20/SFA/	PG13.5	AL21/PG13/SFA/
21	-	-	PG16	AL21/PG16/SFA/
28	M25	AL28/M25/SFA/	PG21	AL28/PG21/SFA/
34	M32	AL34/M32/SFA/	PG29	AL34/PG29/SFA/
42	M40	AL42/M40/SFA/	PG36	AL42/PG36/SFA/
54	M50	AL54/M50/SFA/	PG48	AL54/PG48/SFA/
54	M63	AL54/M63/SFA/	-	-

TYPE CSF90 - ADAPTALOK

90° ELBOW FITTING - SWIVEL INTERNAL FEMALE THREAD
For attachment to external threads & other fittings.

Polyamide (Nylon) 66. Nickel plated brass thread.
Colour Black (BL) & Grey (GR).



	METRIC THREAD	PART NUMBER	PG THREAD	PART NUMBER
M16	AL13/M16/CSF90/	PG9	AL13/PG9/CSF90/	
M16	AL16/M16/CSF90/	PG11	AL16/PG11/CSF90/	
M20	AL21/M20/CSF90/	PG13.5	AL21/PG13/CSF90/	
-	-	PG16	AL21/PG16/CSF90/	
M25	AL28/M25/CSF90/	PG21	AL28/PG21/CSF90/	
M32	AL34/M32/CSF90/	PG29	AL34/PG29/CSF90/	
M40	AL42/M40/CSF90/	PG36	AL42/PG36/CSF90/	
M50	AL54/M50/CSF90/	PG48	AL54/PG48/CSF90/	
-	-	-	-	

TYPE SF45 - ADAPTALOK

45° ELBOW BODY - SWIVEL INTERNAL FEMALE THREAD
For attachment to external threads & other fittings.

Polyamide (Nylon) 66. Nickel plated brass thread.
Colour Black (BL) & Grey (GR).



	METRIC THREAD	PART NUMBER	PG THREAD	PART NUMBER
M16	AL13/M16/SF45/	PG9	AL13/PG9/SF45/	
M16	AL16/M16/SF45/	PG11	AL16/PG11/SF45/	
M20	AL21/M20/SF45/	PG13.5	AL21/PG13/SF45/	
-	-	PG16	AL21/PG16/SF45/	
M25	AL28/M25/SF45/	PG21	AL28/PG21/SF45/	
M32	AL34/M32/SF45/	PG29	AL34/PG29/SF45/	
M40	AL42/M40/SF45/	PG36	AL42/PG36/SF45/	
M50	AL54/M50/SF45/	PG48	AL54/PG48/SF45/	
-	-	-	-	

IP Rating with
appropriate fitting

IP40

IP65

IP66

IP67

IP68

NEW IP69k

For use with following conduit;
Type PA, PI, CP & PR

n/a

n/a

Type PA, PI, CP & PR conduit

Type PA, PI, CP & PR conduit + ALS Seal

Type PA, PI, CP & PR conduit + ALS Seal

Type PA, PI, CP & PR conduit + ALS Seal

Temperature Range

Static Applications: -50 °C to +120 °C
Moving Applications: -45 °C to +120 °C

Fitting Characteristics



Approvals



For use with following conduit;
Type PA, PI, CP & PR

n/a

n/a

Type PA, PI, CP & PR conduit

Type PA, PI, CP & PR conduit + ALS Seal

Type PA, PI, CP & PR conduit + ALS Seal

Type PA, PI, CP & PR conduit + ALS Seal



For use with following conduit;
Type PA, PI, CP & PR

n/a

n/a

Type PA, PI, CP & PR conduit

Type PA, PI, CP & PR conduit + ALS Seal

Type PA, PI, CP & PR conduit + ALS Seal

Type PA, PI, CP & PR conduit + ALS Seal



Adaptalok non-metallic system

UNEF CIRCULAR CONNECTOR FITTINGS (MIL C 5015)



PRODUCT CHARACTERISTICS

Type
Description
Materials
Example

TYPE A - ADAPTALOK

STRAIGHT BODY - SWIVEL INTERNAL THREAD
For coupling to UNEF circular connectors.

Polyamide (Nylon) 66 & Aluminium
Colour Black (BL) only.



TYPE C90 - ADAPTALOK

90° ELBOW BODY - SWIVEL INTERNAL THREAD
For coupling to UNEF circular connectors.

Polyamide (Nylon) 66 & Aluminium
Colour Black (BL) only.



To order quote part no & insert 000620 - e.g. AL13/U063/A/000620

TYPE 45 - ADAPTALOK

45° ELBOW BODY - SWIVEL INTERNAL THREAD
For coupling to UNEF circular connectors.

Polyamide (Nylon) 66 & Aluminium
Colour Black (BL) only.



NOMINAL CONDUIT SIZE (mm)	CONNECTOR UNEF THREAD
13	1/8" - 24
13	3/16" - 20
13	1/4" - 20
16	3/8" - 24
16	1/2" - 20
16	5/8" - 20
16	3/4" - 20
16	7/8" - 20
16	1" - 20
16	1 1/8" - 18
16	1 1/4" - 18
21	1 1/2" - 20
21	1 3/4" - 20
21	1 7/8" - 20
21	1 5/8" - 20
21	1 3/4" - 18
21	1 1/2" - 18
21	1 1/4" - 18
21	1 1/8" - 18
21	1 1/16" - 18
21	1 1/32" - 18

PART NUMBER	NOMINAL CONDUIT SIZE (mm)	CONNECTOR UNEF THREAD	PART NUMBER
AL13/U063/A/	21	1/8" - 18	AL21/U144/A/
AL13/U075/A/	21	1/4" - 18	AL21/U175/A/
AL13/U088/A/	28	1/8" - 20	AL28/U088/A/
AL16/U063/A/	28	3/8" - 24	AL28/U094/A/
AL16/U075/A/	28	1/2" - 20	AL28/U100/A/
AL16/U081/A/	28	1" - 20	AL28/U119/A/
AL16/U088/A/	28	1 1/8" - 18	AL28/U138/A/
AL16/U094/A/	28	1 1/4" - 18	AL28/U144/A/
AL16/U100/A/	28	1 1/2" - 18	AL28/U175/A/
AL16/U119/A/	28	1 3/4" - 18	AL28/U200/A/
AL16/U131/A/	28	2" - 18	AL28/U225/A/
AL21/U075/A/	28	2 1/4" - 18	AL34/U100/A/
AL21/U088/A/	34	1" - 20	AL34/U119/A/
AL21/U094/A/	34	1 1/8" - 18	AL34/U144/A/
AL21/U100/A/	34	1 1/4" - 18	AL34/U175/A/
AL21/U113/A/	34	1 1/2" - 18	AL34/U200/A/
AL21/U119/A/	34	2" - 18	AL42/U175/A/
AL21/U131/A/	42	1 1/4" - 18	AL42/U200/A/
AL21/U138/A/	42	2" - 18	

NOMINAL CONDUIT SIZE (mm)	CONNECTOR UNEF THREAD	PART NUMBER
13	5/8" - 24	AL13/U063/C90/
13	3/4" - 20	AL13/U075/C90/
13	1/2" - 20	AL13/U088/C90/
16	5/8" - 24	AL16/U063/C90/
16	3/4" - 20	AL16/U075/C90/
16	1/2" - 20	AL16/U081/C90/
16	3/8" - 20	AL16/U088/C90/
16	1/4" - 20	AL16/U094/C90/
16	1" - 20	AL16/U100/C90/
16	1 1/8" - 18	AL16/U119/C90/
16	1 1/4" - 18	AL16/U131/C90/
21	1 1/2" - 20	AL21/U075/C90/
21	1 3/4" - 20	AL21/U088/C90/
21	1 5/8" - 20	AL21/U094/C90/
21	1" - 20	AL21/U100/C90/
21	1 1/8" - 18	AL21/U113/C90/
21	1 1/4" - 18	AL21/U131/C90/
21	1 1/2" - 18	AL21/U138/C90/

NOMINAL CONDUIT SIZE (mm)	CONNECTOR UNEF THREAD	PART NUMBER
21	1 1/8" - 18	AL21/U144/C90/
21	1 1/4" - 18	AL21/U175/C90/
28	1 1/8" - 20	AL28/U088/C90/
28	1 1/4" - 20	AL28/U094/C90/
28	1 1/2" - 20	AL28/U100/C90/
28	1" - 20	AL28/U119/C90/
28	1 1/8" - 18	AL28/U138/C90/
28	1 1/4" - 18	AL28/U144/C90/
28	1 1/2" - 18	AL28/U175/C90/
28	1 3/4" - 18	AL28/U200/C90/
28	2" - 18	AL28/U225/C90/
28	2 1/4" - 18	AL34/U100/C90/
34	1" - 20	AL34/U119/C90/
34	1 1/8" - 18	AL34/U144/C90/
34	1 1/4" - 18	AL34/U175/C90/
34	1 1/2" - 18	AL34/U200/C90/
34	2" - 18	AL42/U175/C90/
42	1 1/4" - 18	AL42/U200/C90/

NOMINAL CONDUIT SIZE (mm)	CONNECTOR UNEF THREAD	PART NUMBER
13	5/8" - 24	AL13/U063/45/
13	3/4" - 20	AL13/U075/45/
13	1/2" - 20	AL13/U088/45/
16	5/8" - 24	AL16/U063/45/
16	3/4" - 20	AL16/U075/45/
16	1/2" - 20	AL16/U081/45/
16	3/8" - 20	AL16/U088/45/
16	1/4" - 20	AL16/U094/45/
16	1" - 20	AL16/U100/45/
16	1 1/8" - 18	AL16/U119/45/
16	1 1/4" - 18	AL16/U131/45/
21	1 1/2" - 20	AL21/U075/45/
21	1 3/4" - 20	AL21/U088/45/
21	1 5/8" - 20	AL21/U094/45/
21	1" - 20	AL21/U100/45/
21	1 1/8" - 18	AL21/U113/45/
21	1 1/4" - 18	AL21/U131/45/
21	1 1/2" - 18	AL21/U138/45/

NOMINAL CONDUIT SIZE (mm)	CONNECTOR UNEF THREAD	PART NUMBER
21	1 1/8" - 18	AL21/U144/45/
21	1 1/4" - 18	AL21/U175/45/
28	1 1/8" - 20	AL28/U088/45/
28	1 1/4" - 20	AL28/U094/45/
28	1 1/2" - 20	AL28/U100/45/
28	1" - 20	AL28/U119/45/
28	1 1/8" - 18	AL28/U138/45/
28	1 1/4" - 18	AL28/U144/45/
28	1 1/2" - 18	AL28/U175/45/
28	1 3/4" - 18	AL28/U200/45/
28	2" - 18	AL28/U225/45/
28	2 1/4" - 18	AL34/U100/45/
34	1" - 20	AL34/U119/45/
34	1 1/8" - 18	AL34/U144/45/
34	1 1/4" - 18	AL34/U175/45/
34	1 1/2" - 18	AL34/U200/45/
34	2" - 18	AL42/U175/45/
42	1 1/4" - 18	AL42/U200/45/

IP Rating with appropriate fitting

IP40

IP65

IP66

IP67

IP68

NEW IP69k

Temperature Range

Fitting Characteristics

For use with following conduit;
Type PA, PI, CP & PR

n/a

n/a

Type PA, PI, CP & PR conduit

Type PA, PI, CP & PR conduit + ALS Seal

Type PA, PI, CP & PR conduit + ALS Seal

Type PA, PI, CP & PR conduit + ALS Seal

Static Applications: -50 °C to +120 °C
Moving Applications: -45 °C to +120 °C



For use with following conduit;
Type PA, PI, CP & PR

n/a

n/a

Type PA, PI, CP & PR conduit

Type PA, PI, CP & PR conduit + ALS Seal

Type PA, PI, CP & PR conduit + ALS Seal

Type PA, PI, CP & PR conduit + ALS Seal

Static Applications: -50 °C to +120 °C
Moving Applications: -45 °C to +120 °C



For use with following conduit;
Type PA, PI, CP & PR

n/a

n/a

Type PA, PI, CP & PR conduit

Type PA, PI, CP & PR conduit + ALS Seal

Type PA, PI, CP & PR conduit + ALS Seal

Type PA, PI, CP & PR conduit + ALS Seal

Static Applications: -50 °C to +120 °C
Moving Applications: -45 °C to +120 °C



Jumbo non-metallic system

CLIP TOGETHER IP40 FITTINGS

PRODUCT CHARACTERISTICS

Type
Description
Materials
Example

TYPE FL/A - ADAPTALOK

STRAIGHT PANEL MOUNTING SWIVEL FLANGE with integral face seal.

Polyamide (Nylon) 66
Colour Black (BL) & Grey (GR).



NOMINAL CONDUIT SIZE (mm)

80
106

PART NUMBER

ADC80/FL/A
ADC106/FL/A

TYPE CP/90 COUPLER

90° COUPLER
For coupling to corrugated flexible conduit.

Polyamide (Nylon) 66
Colour Black (BL) & Grey (GR).



PART NUMBER

ADC80/CP/90
ADC106/CP/90

TYPE FL/90 - ADAPTALOK

90° JUMBO FLANGE with integral face seal.

Polyamide (Nylon) 66
Colour Black (BL) & Grey (GR).



PART NUMBER

ADC80/FL/90
ADC106/FL/90

TYPE SK

SEALING KIT
For use with JUMBO Fittings to achieve IP65.
Consists of 2 sealing washers & 'O' rings per kit.

Rubber
Colour Black (BL) only.



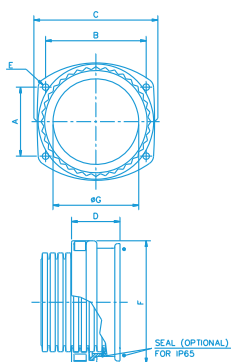
NOMINAL CONDUIT SIZE (mm)

80
106

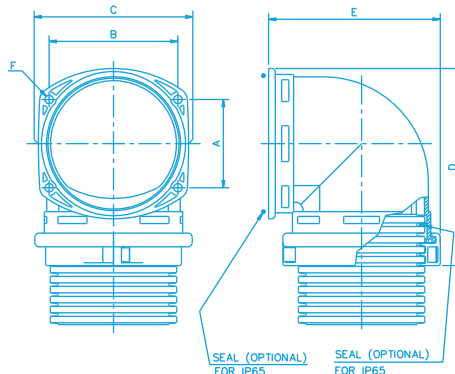
PART NUMBER

SK80
SK106

NOMINAL SIZE (mm)	PART NUMBER ADC80/FL/A	PART NUMBER ADC106/FL/A
A	60.0	74.0
B	80.0	108.0
C	98.0	126.0
D	52.5	52.5
E Ø	7.0	7.0
F	106.0	132.0



NOMINAL SIZE (mm)	PART NUMBER ADC80/FL/A	PART NUMBER ADC106/FL/A
A	60.0	74.0
B	80.0	108.0
C	96.0	126.0
D	128.0	166.0
E	110.5	144.0
F Ø	7.0	7.0



IP Rating with appropriate fitting

- IP40
- IP65
- IP66
- IP67
- IP68
- IP69k

Temperature Range

Fitting Characteristics

Approvals

For use with following conduit;
Type PA, PI & PR JUMBO only

Type PA, PI & PR JUMBO conduit

Type PA, PI & PI JUMBO conduit + SK Seal

n/a
n/a
n/a
n/a
n/a

Static Applications: -50 °C to +120 °C
Moving Applications: -45 °C to +120 °C



For use with following conduit;
Type PA, PI & PR JUMBO only

Type PA, PI & PR JUMBO conduit

Type PA, PI & PI JUMBO conduit + SK Seal

n/a
n/a
n/a
n/a
n/a

Static Applications: -50 °C to +120 °C
Moving Applications: -45 °C to +120 °C



For use with following conduit;
Type PA, PI & PR JUMBO only

Type PA, PI & PR JUMBO conduit

Type PA, PI & PI JUMBO conduit + SK Seal

n/a
n/a
n/a
n/a
n/a

Static Applications: -50 °C to +120 °C
Moving Applications: -45 °C to +120 °C



What is Adaptalok ATS™? **NEW**



The Unique and Ultimate new non metallic conduit system... Adaptalok ATS™ from Adaptaflex

Adaptalok ATS™ represents a unique and innovative solution in flexible conduit systems. Until now, manufacturers have produced fittings and seals separately, and assembled them together, or had the customer assemble them. This increases assembly time and introduces the possibility for errors.

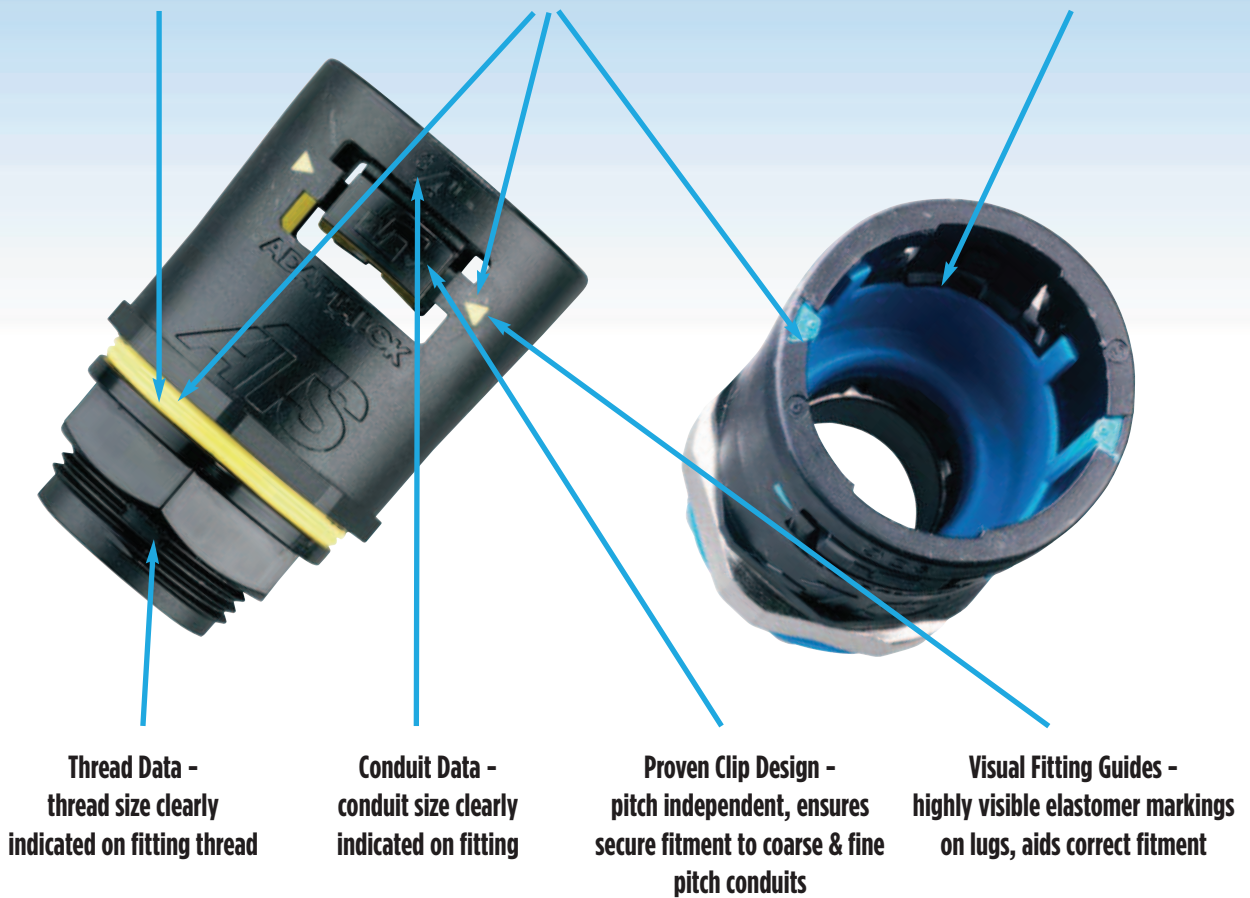
Adaptalok ATS™ uses a sophisticated moulding process to mould an internal conduit seal and a face seal washer. This makes installation times very fast, and extremely reliable, because the seals cannot be left out. The conduit system also benefits from the highest IP rating possible.

Key Features

Integral Face Seal Washer -
guaranteed fit, cannot be lost or fitted incorrectly. No assembly

High Visibility Elastomer -
3 visible confirmation points

Internal Elastomer Conduit Seal -
guaranteed fit, cannot be lost or fitted incorrectly. No Assembly & protects cables



Thread Data -
thread size clearly indicated on fitting thread

Conduit Data -
conduit size clearly indicated on fitting

Proven Clip Design -
pitch independent, ensures secure fitment to coarse & fine pitch conduits

Visual Fitting Guides -
highly visible elastomer markings on lugs, aids correct fitment

Additional Key Features

- Nylon 6.6 Body
- IP66, 67, 68 & 69k performance as standard

- One piece fitting, no customer assembly
- UL 1696 version - Light Blue Elastomer

Adaptalok ATS™ non-metallic system **NEW**

ONE-PIECE PUSH-ON LIQUID TIGHT IP68/69k FITTINGS

PRODUCT CHARACTERISTICS

Type
Description
Materials
Example

TYPE A - ADAPTALOK ATS™ NEW

STRAIGHT FITTING - FIXED EXTERNAL THREAD

For insertion into knockouts using a locknut. Locknut supplied with METRIC thread

Polyamide (Nylon) 66/TPE
Body Colour Black (BL) & Grey (GR) . Yellow (Y) Elastomer



NOMINAL CONDUIT
SIZE (mm)

	METRIC THREAD	PART NUMBER	PF THREAD	PART NUMBER	NPT THREAD	PART NUMBER
13	M16	AT13/M16/A	3/8	AT13/PF038/A	3/8	AT13/038/A
13	M20	AT13/M20/A	-	-	-	-
16	M16	AT16/M16/A	3/8	AT16/PF038/A	3/8	AT16/038/A
16	M20	AT16/M20/A	1/2	AT16/PF050/A	1/2	AT16/050/A
21/22	M20	AT21/M20/A	1/2	AT21/PF050/A	1/2	AT21/050/A
21/22	M25	AT21/M25/A	-	-	-	-
28	M25	AT28/M25/A	3/4	AT28/PF075/A	3/4	AT28/075/A
28	M32	AT28/M32/A	-	-	-	-
34	M32	AT34/M32/A	1	AT34/PF100/A	1	AT34/100/A
34	M40	AT34/M40/A	-	-	-	-
42	M40	AT42/M40/A	1 1/4	AT42/PF125/A	1 1/4	AT42/125/A
42	M50	AT42/M50/A	-	-	-	-
48	M50	AT48/M50/A	1 1/2	AT48/PF150/A	1 1/2	AT48/150/A
54	M50	AT54/M50/A	-	-	-	-
54	M63	AT54/M63/A	2	AT54/PF200/A	2	AT54/200/A

To order quote part no, body colour & elastomer colour- e.g. AT21/M20/C90/BLY

TYPE A - ADAPTALOK ATS™ NEW

STRAIGHT FITTING - FIXED EXTERNAL THREAD

For insertion into knockouts using a locknut. Locknut supplied with METRIC thread

Polyamide (Nylon) 66/TPE
Body Colour Black (BL) & Grey (GR) . Blue (B) Elastomer



	METRIC THREAD	PART NUMBER	NPT THREAD	PART NUMBER
M16	AT13/M16/A	3/8	AT13/038/A	
M20	AT13/M20/A	-	-	
M16	AT16/M16/A	3/8	AT16/038/A	
M20	AT16/M20/A	1/2	AT16/050/A	
M20	AT21/M20/A	1/2	AT21/050/A	
M25	AT21/M25/A	-	-	
M25	AT28/M25/A	3/4	AT28/075/A	
M32	AT28/M32/A	-	-	
M32	AT34/M32/A	1	AT34/100/A	
M40	AT34/M40/A	-	-	
M40	AT42/M40/A	1 1/4	AT42/125/A	
M50	AT42/M50/A	-	-	
M50	AT48/M50/A	1 1/2	AT48/150/A	
M50	AT54/M50/A	-	-	
M63	AT54/M63/A	2	AT54/200/A	

Add body & elastomer colour to part no. /BLY, /BLB, /GRY, or /GRB

IP Rating with
appropriate fitting

- IP66
- IP67
- IP68
- IP69k

Temperature Range

For use with following conduit;
Type PA, PI, CP, PR & PADL

- Yes
- Yes
- Yes (4 bar 30 mins)
- Yes

Fitting Characteristics

Static Applications: -50 °C to +120 °C
Moving Applications: -45 °C to +120 °C

Approvals



For use with following conduit;
Type PA, PI, CP, PR & PADL

- Yes
- Yes
- Yes (4 bar 30 mins)
- Yes

Static Applications: -50 °C to +120 °C
Moving Applications: -45 °C to +120 °C



Adaptalok ATS™ non-metallic system **NEW**

ONE-PIECE PUSH-ON LIQUID TIGHT IP68/69k FITTINGS



PRODUCT CHARACTERISTICS

To order quote part no, body colour & elastomer colour - e.g. AT21/M20/C90/BLY

Type

TYPE C90 - ADAPTALOK ATS™ **NEW**

Description

90° ELBOW FITTING - FIXED EXTERNAL THREAD

For insertion into knockouts using a locknut.
Locknut supplied with METRIC thread

Materials

Polyamide (Nylon) 66/TPE
Body Colour Black (BL) & Grey (GR) . Yellow (Y) Elastomer

Example



TYPE C90 - ADAPTALOK ATS™ **NEW**

90° ELBOW FITTING - FIXED EXTERNAL THREAD

For insertion into knockouts using a locknut.
Locknut supplied with METRIC thread

Polyamide (Nylon) 66/TPE
Body Colour Black (BL) & Grey (GR) . Blue (B) Elastomer



NOMINAL CONDUIT SIZE (mm)

METRIC THREAD	PART NUMBER	PFT THREAD	PART NUMBER	NPT THREAD	PART NUMBER
M16	AT13/M16/C90	3/8	AT13/PF038/C90	3/8	AT13/O38/C90
M16	AT16/M16/C90	3/8	AT16/PF038/C90	3/8	AT16/O38/C90
M20	AT16/M20/C90	1/2	AT16/PF050/C90	1/2	AT16/O50/C90
M20	AT21/M20/C90	1/2	AT21/PF050/C90	1/2	AT21/O50/C90
M25	AT28/M25/C90	3/4	AT28/PF075/C90	3/4	AT28/O75/C90
M32	AT34/M32/C90	1	AT34/PF100/C90	1	AT34/O100/C90
M40	AT42/M40/C90	1 1/4	AT42/PF125/C90	1 1/4	AT42/O125/C90
M50	AT48/M50/C90	1 1/2	AT48/PF150/C90	1 1/2	AT48/O150/C90
M50	AT54/M50/C90	1 1/2	AT54/PF150/C90	1 1/2	AT54/O150/C90
M63	AT54/M63/C90	2	AT54/PF200/C90	2	AT54/O200/C90

METRIC THREAD	PART NUMBER	NPT THREAD	PART NUMBER
M16	AT13/M16/C90	3/8	AT13/O38/C90
M16	AT16/M16/C90	3/8	AT16/O38/C90
M20	AT16/M20/C90	1/2	AT16/O50/C90
M20	AT21/M20/C90	1/2	AT21/O50/C90
M25	AT28/M25/C90	3/4	AT28/O75/C90
M32	AT34/M32/C90	1	AT34/O100/C90
M40	AT42/M40/C90	1 1/4	AT42/O125/C90
M50	AT48/M50/C90	1 1/2	AT48/O150/C90
M50	AT54/M50/C90	1 1/2	AT54/O150/C90
M63	AT54/M63/C90	2	AT54/O200/C90

Add body & elastomer colour to part no. /BLY, /BLB, /GRY, or /GRB

IP Rating with appropriate fitting

- IP66 Yes
- IP67 Yes
- IP68 Yes (4 bar 30 mins)
- IP69k Yes

Temperature Range

Static Applications: -50 °C to +120 °C
Moving Applications: -45 °C to +120 °C

Fitting Characteristics

Approvals



For use with following conduit;
Type PA, PI, CP, PR & PADL

- Yes
- Yes
- Yes (4 bar 30 mins)
- Yes

Static Applications: -50 °C to +120 °C
Moving Applications: -45 °C to +120 °C





PRODUCT CHARACTERISTICS

Type

TYPE 45 - ADAPTALOK ATS™ NEW

Description

45° ELBOW FITTING - FIXED EXTERNAL THREAD

For insertion into knockouts using a locknut.
Locknut supplied with METRIC thread

Materials

Polyamide (Nylon) 66/TPE
Body Colour Black (BL) & Grey (GR) . Yellow (Y) Elastomer

Example



NOMINAL CONDUIT SIZE (mm)

	METRIC THREAD	PART NUMBER	PT THREAD	PART NUMBER	NPT THREAD	PART NUMBER
13	M16	AT13/M16/45	3/8	AT13/PF038/45	3/8	AT13/038/45
16	M16	AT16/M16/45	3/8	AT16/PF038/45	3/8	AT16/038/45
16	M20	AT16/M20/45	1/2	AT16/PF050/45	1/2	AT16/050/45
21/22	M20	AT21/M20/45	1/2	AT21/PF050/45	1/2	AT21/050/45
28	M25	AT28/M25/45	3/4	AT28/PF075/45	3/4	AT28/075/45
34	M32	AT34/M32/45	1	AT34/PF100/45	1	AT34/100/45
42	M40	AT42/M40/45	1 1/4	AT42/PF125/45	1 1/4	AT42/125/45
48	M50	AT48/M50/45	1 1/2	AT48/PF150/45	1 1/2	AT48/150/45
54	M50	AT54/M50/45	-	-	-	-

To order quote part no, body colour & elastomer colour- e.g. AT54/M63/45/BLB

TYPE 45 - ADAPTALOK ATS™ NEW

45° ELBOW FITTING - FIXED EXTERNAL THREAD

For insertion into knockouts using a locknut.
Locknut supplied with METRIC thread

Polyamide (Nylon) 66/TPE
Body Colour Black (BL) & Grey (GR) . Blue (B) Elastomer



	METRIC THREAD	PART NUMBER	NPT THREAD	PART NUMBER
M16	AT13/M16/45	3/8	AT13/038/45	
M16	AT16/M16/45	3/8	AT16/038/45	
M20	AT16/M20/45	1/2	AT16/050/45	
M20	AT21/M20/45	1/2	AT21/050/45	
M25	AT28/M25/45	3/4	AT28/075/45	
M32	AT34/M32/45	1	AT34/100/45	
M40	AT42/M40/45	1 1/4	AT42/125/45	
M50	AT48/M50/45	1 1/2	AT48/150/45	
M50	AT54/M50/45	-	-	

Add body & elastomer colour to part no. /BLY, /BLB, /GRY, or /GRB

IP Rating with appropriate fitting

IP66

IP67

IP68

IP69k

Temperature Range

For use with following conduit;
Type PA, PI, CP, PR & PADL

Yes

Yes

Yes (4 bar 30 mins)

Yes

Static Applications: -50 °C to +120 °C
Moving Applications: -45 °C to +120 °C

Fitting Characteristics

Approvals



For use with following conduit;
Type PA, PI, CP, PR & PADL

Yes

Yes

Yes (4 bar 30 mins)

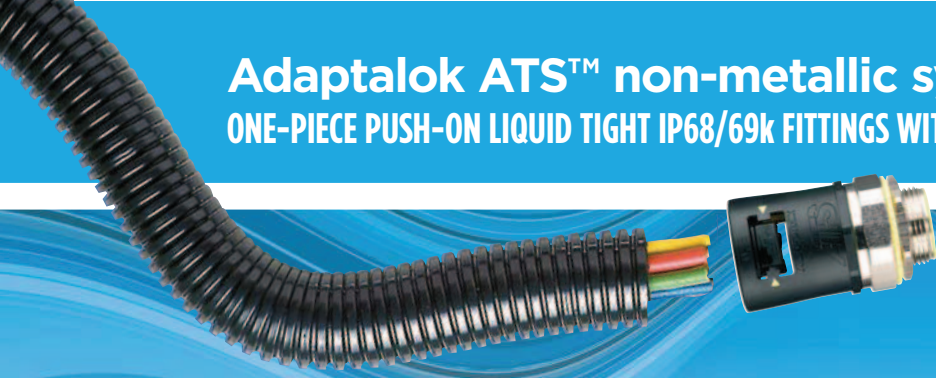
Yes

Static Applications: -50 °C to +120 °C
Moving Applications: -45 °C to +120 °C



Adaptalok ATS™ non-metallic system **NEW**

ONE-PIECE PUSH-ON LIQUID TIGHT IP68/69k FITTINGS WITH SWIVEL BRASS THREADS



PRODUCT CHARACTERISTICS

Type

TYPE SA - ADAPTALOK ATS™ **NEW**

Description

STRAIGHT FITTING - SWIVEL EXTERNAL MALE THREAD

For insertion into threaded entries & knockouts.
Order locknuts separately.

Materials

Polyamide (Nylon) 66. Nickel plated brass thread/TPE
Body Colour Black (BL) & Grey (GR) .
Yellow (Y) & Blue (B) Elastomer

Example



NOMINAL CONDUIT
SIZE (mm)

13
16
21/22
28
34
42
48
54
54

METRIC THREAD

PART NUMBER

M16 AT13/M16/SA
M16 AT16/M16/SA
M20 AT21/M20/SA
M25 AT28/M25/SA
M32 AT34/M32/SA
M40 AT42/M40/SA
M50 AT48/M50/SA
M50 AT54/M50/SA
M63 AT54/M63/SA

NPT THREAD

PART NUMBER

3/8 AT13/038/SA
3/8 AT16/038/SA
1/2 AT21/050/SA
3/4 AT28/075/SA
1 AT34/100/SA
1 1/4 AT42/125/SA
1 1/2 AT48/150/SA
- -
2 AT54/200/SA

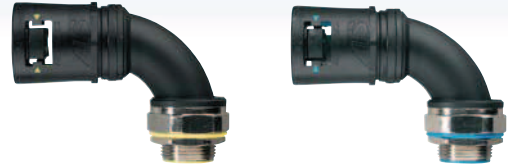
To order quote part no, body colour & elastomer colour- e.g. AT16/M16/SA/BLY

TYPE CS90 - ADAPTALOK ATS™ **NEW**

90° ELBOW FITTING - SWIVEL EXTERNAL MALE THREAD

For insertion into threaded entries & knockouts.
Order locknuts separately.

Polyamide (Nylon) 66. Nickel plated brass thread/TPE
Body Colour Black (BL) & Grey (GR) .
Yellow (Y) & Blue (B) Elastomer



METRIC THREAD

PART NUMBER

M16 AT13/M16/CS90
M16 AT16/M16/CS90
M20 AT21/M20/CS90
M25 AT28/M25/CS90
M32 AT34/M32/CS90
M40 AT42/M40/CS90
M50 AT48/M50/CS90
M50 AT54/M50/CS90
M63 AT54/M63/CS90

NPT THREAD

PART NUMBER

3/8 AT13/038/CS90
3/8 AT16/038/CS90
1/2 AT21/050/CS90
3/4 AT28/075/CS90
1 AT34/100/CS90
1 1/4 AT42/125/CS90
1 1/2 AT48/150/CS90
- -
2 AT54/200/CS90

Add body & elastomer colour to part no. /BLY, /BLB, /GRY, or /GRB

NOTE: Special Big Bore & PF/GAS metal threads are available as made to order. Contact us for details

IP Rating with
appropriate fitting

- IP66
- IP67
- IP68
- IP69k

Temperature Range

For use with following conduit;
Type PA, PI, CP, PR & PADL

- Yes
- Yes
- Yes (4 bar 30 mins)
- Yes

Static Applications: -50 °C to +120 °C
Moving Applications: -45 °C to +120 °C

Fitting Characteristics



Approvals



For use with following conduit;
Type PA, PI, CP, PR & PADL

- Yes
- Yes
- Yes (4 bar 30 mins)
- Yes

Static Applications: -50 °C to +120 °C
Moving Applications: -45 °C to +120 °C





PRODUCT CHARACTERISTICS

Type
Description
Materials
Example

TYPE S45 - ADAPTALOK ATS™ NEW

45° ELBOW BODY - SWIVEL EXTERNAL MALE THREAD
For insertion into threaded entries & knockouts.
Order locknuts separately.

Polyamide (Nylon) 66. Nickel plated brass thread/TPE
Body Colour Black (BL) & Grey (GR) .
Yellow (Y) & Blue (B) Elastomer



NOMINAL CONDUIT SIZE (mm)

METRIC THREAD	PART NUMBER	NPT THREAD	PART NUMBER
13	M16 AT13/M16/S45	3/8	AT13/038/S45
16	M16 AT16/M16/S45	3/8	AT16/038/S45
21/22	M20 AT21/M20/S45	1/2	AT21/050/S45
28	M25 AT28/M25/S45	3/4	AT28/075/S45
34	M32 AT34/M32/S45	1	AT34/100/S45
42	M40 AT42/M40/S45	1 1/4	AT42/125/S45
48	M50 AT48/M50/S45	1 1/2	AT48/150/S45
54	M50 AT54/M50/S45	-	-
54	M63 AT54/M63/S45	2	AT54/200/S45

TYPE SFA - ADAPTALOK ATS™ NEW

STRAIGHT BODY - SWIVEL INTERNAL FEMALE THREAD
For attachment to external threads & other fittings.
Order locknuts separately.

Polyamide (Nylon) 66. Nickel plated brass thread/TPE
Body Colour Black (BL) & Grey (GR) .
Yellow (Y) & Blue (B) Elastomer



METRIC THREAD	PART NUMBER	NPT THREAD	PART NUMBER
M16	AT13/M16/SFA	3/8	AT13/038/SFA
M16	AT16/M16/SFA	3/8	AT16/038/SFA
M20	AT21/M20/SFA	1/2	AT21/050/SFA
M25	AT28/M25/SFA	3/4	AT28/075/SFA
M32	AT34/M32/SFA	1	AT34/100/SFA
M40	AT42/M40/SFA	1 1/4	AT42/125/SFA
M50	AT48/M50/SFA	1 1/2	AT48/150/SFA
M50	AT54/M50/SFA	-	-
M63	AT54/M63/SFA	2	AT54/200/SFA

Add body & elastomer colour to part no. /BLY, /BLB, /GRY, or /GRB

NOTE: Special Big Bore & PF/GAS metal threads are available as made to order. Contact us for details

IP Rating with appropriate fitting

- IP66
- IP67
- IP68
- IP69k

Temperature Range

For use with all conduits in this catalogue

Yes

Yes

Yes (4 bar 30 mins)

Yes

Static Applications: -50 °C to +120 °C
Moving Applications: -45 °C to +120 °C

Fitting Characteristics



Approvals



For use with all conduits in this catalogue

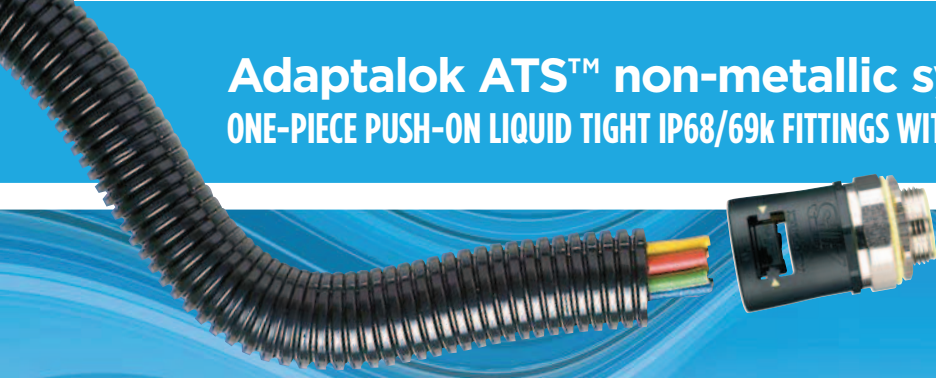
- Yes
- Yes
- Yes (4 bar 30 mins)
- Yes

Static Applications: -50 °C to +120 °C
Moving Applications: -45 °C to +120 °C



Adaptalok ATS™ non-metallic system **NEW**

ONE-PIECE PUSH-ON LIQUID TIGHT IP68/69k FITTINGS WITH SWIVEL BRASS THREADS



PRODUCT CHARACTERISTICS

To order quote part no, body colour & elastomer colour- e.g. AT16/M16/SA/BLY

Type

TYPE CSF90 - ADAPTALOK ATS™ **NEW**

TYPE SF45 - ADAPTALOK ATS™ **NEW**

Description

90° ELBOW FITTING - SWIVEL INTERNAL FEMALE THREAD

45° ELBOW BODY - SWIVEL INTERNAL FEMALE THREAD

For attachment to external threads & other fittings.
Order locknuts separately.

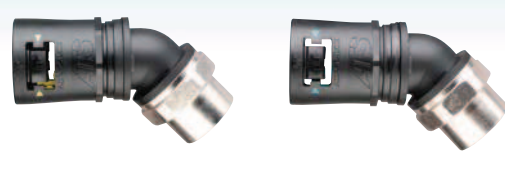
For attachment to external threads & other fittings.
Order locknuts separately.

Materials

Polyamide (Nylon) 66. Nickel plated brass thread/TPE
Body Colour Black (BL) & Grey (GR) .
Yellow (Y) & Blue (B) Elastomer

Polyamide (Nylon) 66. Nickel plated brass thread/TPE
Body Colour Black (BL) & Grey (GR) .
Yellow (Y) & Blue (B) Elastomer

Example



NOMINAL CONDUIT SIZE (mm)

METRIC THREAD	PART NUMBER	NPT THREAD	PART NUMBER
M16	AT13/M16/CSF90	3/8"	AT13/038/CSF90
M16	AT16/M16/CSF90	3/8"	AT16/038/CSF90
M20	AT21/M20/CSF90	1/2"	AT21/050/CSF90
M25	AT28/M25/CSF90	3/4"	AT28/075/CSF90
M32	AT34/M32/CSF90	1"	AT34/100/CSF90
M40	AT42/M40/CSF90	1 1/4"	AT42/125/CSF90
M50	AT48/M50/CSF90	1 1/2"	AT48/150/CSF90
M54	M50 AT54/M50/CSF90	-	-
M63	AT54/M63/CSF90	2"	AT54/200/CSF90

METRIC THREAD	PART NUMBER	NPT THREAD	PART NUMBER
M16	AT13/M16/SF45	3/8"	AT13/038/SF45
M16	AT16/M16/SF45	3/8"	AT16/038/SF45
M20	AT21/M20/SF45	1/2"	AT21/050/SF45
M25	AT28/M25/SF45	3/4"	AT28/075/SF45
M32	AT34/M32/SF45	1"	AT34/100/SF45
M40	AT42/M40/SF45	1 1/4"	AT42/125/SF45
M50	AT48/M50/SF45	1 1/2"	AT48/150/SF45
M50	AT54/M50/SF45	-	-
M63	AT54/M63/SF45	2"	AT54/200/SF45

Add body & elastomer colour to part no. /BLY, /BLB, /GRY, or /GRB

NOTE: Special Big Bore & PF/GAS metal threads are available as made to order. Contact us for details

IP Rating with appropriate fitting

- IP66
- IP67
- IP68
- IP69k

Temperature Range

Static Applications: -50 °C to +120 °C
Moving Applications: -45 °C to +120 °C

Fitting Characteristics



Approvals



For use with following conduit;
Type PA, PI, CP, PR & PADL

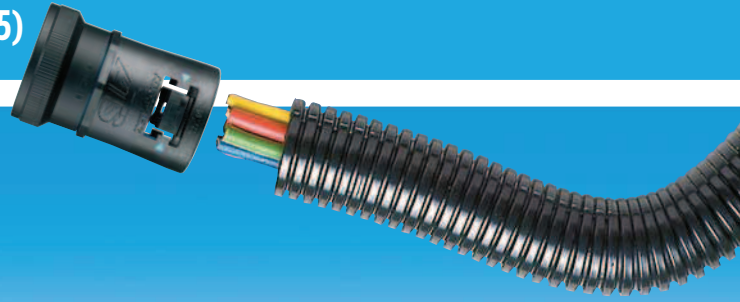
- Yes
- Yes
- Yes (4 bar 30 mins)
- Yes

Static Applications: -50 °C to +120 °C
Moving Applications: -45 °C to +120 °C



Adaptalok ATS™ non-metallic system **NEW**

UNEf CIRCULAR CONNECTOR FITTINGS (MIL C 5015)



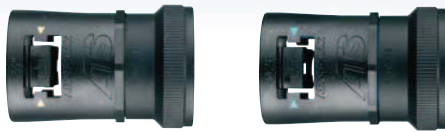
PRODUCT CHARACTERISTICS

Type TYPE SFA - ADAPTALOK ATS™ **NEW**

Description STRAIGHT BODY - SWIVEL INTERNAL THREAD
For coupling to UNEf circular connectors.

Materials Polyamide (Nylon) 66 & Aluminium/TPE
Body Colour Black (BL) only.
Yellow (Y) & Blue (B) Elastomer

Example



NOMINAL CONDUIT SIZE (mm)

NOMINAL CONDUIT SIZE (mm)	CONNECTOR UNEf THREAD	PART NUMBER
13	5/16" - 24	AT13/U063/SFA/
13	3/8" - 20	AT13/U075/SFA/
13	1/2" - 20	AT13/U088/SFA/
16	5/8" - 24	AT16/U063/SFA/
16	3/4" - 20	AT16/U075/SFA/
16	15/16" - 20	AT16/U081/SFA/
16	1 1/8" - 20	AT16/U088/SFA/
16	1 1/16" - 20	AT16/U094/SFA/
16	1 1/8" - 20	AT16/U100/SFA/
16	1 1/16" - 18	AT16/U119/SFA/
16	1 1/8" - 18	AT16/U131/SFA/
21/22	3/4" - 20	AT21/U075/SFA/
21/22	1 1/8" - 20	AT21/U088/SFA/
21/22	1 1/16" - 20	AT21/U094/SFA/
21/22	1 1/8" - 20	AT21/U100/SFA/
21/22	1 1/16" - 18	AT21/U119/SFA/
21/22	1 1/8" - 18	AT21/U131/SFA/
21/22	1 1/16" - 18	AT21/U138/SFA/

NOMINAL CONDUIT SIZE (mm)

NOMINAL CONDUIT SIZE (mm)	CONNECTOR UNEf THREAD	PART NUMBER
21/22	1 1/16" - 18	AT21/U144/SFA/
21/22	1 1/8" - 18	AT21/U175/SFA/
28	1 1/8" - 20	AT28/U088/SFA/
28	1 1/16" - 20	AT28/U094/SFA/
28	5/8" - 20	AT28/U100/SFA/
28	1 1/8" - 20	AT28/U119/SFA/
28	1 1/16" - 18	AT28/U138/SFA/
28	1 1/8" - 18	AT28/U144/SFA/
28	1 1/16" - 18	AT28/U175/SFA/
28	1 1/8" - 18	AT28/U200/SFA/
28	2" - 18	AT28/U225/SFA/
28	2 1/4" - 18	AT34/U100/SFA/
34	1 1/8" - 20	AT34/U119/SFA/
34	1 1/16" - 18	AT34/U144/SFA/
34	1 1/8" - 18	AT34/U175/SFA/
34	1 1/16" - 18	AT34/U200/SFA/
42	2" - 18	AT42/U175/SFA/
42	1 1/4" - 18	AT42/U200/SFA/

Type CSF90 - ADAPTALOK ATS™ **NEW**

Description 90° ELBOW BODY - SWIVEL INTERNAL THREAD
For coupling to UNEf circular connectors.

Materials Polyamide (Nylon) 66 & Aluminium/TPE
Body Colour Black (BL) only.
Yellow (Y) & Blue (B) Elastomer



NOMINAL CONDUIT SIZE (mm)

NOMINAL CONDUIT SIZE (mm)	CONNECTOR UNEf THREAD	PART NUMBER
13	5/16" - 24	AT13/U063/CSF90/
13	3/8" - 20	AT13/U075/CSF90/
13	1/2" - 20	AT13/U088/CSF90/
16	5/8" - 24	AT16/U063/CSF90/
16	3/4" - 20	AT16/U075/CSF90/
16	15/16" - 20	AT16/U081/CSF90/
16	1 1/8" - 20	AT16/U088/CSF90/
16	1 1/16" - 20	AT16/U094/CSF90/
16	1 1/8" - 20	AT16/U100/CSF90/
16	1 1/16" - 18	AT16/U119/CSF90/
16	1 1/8" - 18	AT16/U131/CSF90/
21/22	3/4" - 20	AT21/U075/CSF90/
21/22	1 1/8" - 20	AT21/U088/CSF90/
21/22	1 1/16" - 20	AT21/U094/CSF90/
21/22	1 1/8" - 20	AT21/U100/CSF90/
21/22	1 1/16" - 18	AT21/U119/CSF90/
21/22	1 1/8" - 18	AT21/U131/CSF90/
21/22	1 1/16" - 18	AT21/U138/CSF90/

NOMINAL CONDUIT SIZE (mm)

NOMINAL CONDUIT SIZE (mm)	CONNECTOR UNEf THREAD	PART NUMBER
21/22	1 1/16" - 18	AT21/U144/CSF90/
21/22	1 1/8" - 18	AT21/U175/CSF90/
28	1 1/8" - 20	AT28/U088/CSF90/
28	1 1/16" - 20	AT28/U094/CSF90/
28	5/8" - 20	AT28/U100/CSF90/
28	1 1/8" - 20	AT28/U119/CSF90/
28	1 1/16" - 18	AT28/U138/CSF90/
28	1 1/8" - 18	AT28/U144/CSF90/
28	1 1/16" - 18	AT28/U175/CSF90/
28	1 1/8" - 18	AT28/U200/CSF90/
28	2" - 18	AT28/U225/CSF90/
28	2 1/4" - 18	AT34/U100/CSF90/
34	1 1/8" - 20	AT34/U119/CSF90/
34	1 1/16" - 18	AT34/U144/CSF90/
34	1 1/8" - 18	AT34/U175/CSF90/
34	1 1/16" - 18	AT34/U200/CSF90/
42	2" - 18	AT42/U175/CSF90/
42	1 1/4" - 18	AT42/U200/CSF90/

Add body & elastomer colour to part no. /BLY or /BLB

IP Rating with appropriate fitting

- IP66
- IP67
- IP68
- IP69k

Temperature Range

For use with following conduit;
Type PA, PI, CP, PR & PADL

- Yes
- Yes
- Yes (4 bar 30 mins)
- Yes

Fitting Characteristics



Approvals



For use with following conduit;
Type PA, PI, CP, PR & PADL

- Yes
- Yes
- Yes (4 bar 30 mins)
- Yes

Static Applications: -50 °C to +120 °C
Moving Applications: -45 °C to +120 °C



Adaptalok ATS™ non-metallic system **NEW**

UNEF CIRCULAR CONNECTOR FITTINGS (MIL C 5015)



PRODUCT CHARACTERISTICS

Type
Description
Materials
Example

TYPE SF45 - ADAPTALOK ATS™ NEW
45° ELBOW BODY - SWIVEL INTERNAL THREAD
For coupling to UNEF circular connectors.

Polyamide (Nylon) 66 & Aluminium/TPE
Body Colour Black (BL) only.
Yellow (Y) & Blue (B) Elastomer



NOMINAL CONDUIT SIZE (mm)

13
13
13
16
16
16
16
16
16
16
16
16
21/22
21/22
21/22
21/22
21/22
21/22
21/22
21/22
21/22

CONNECTOR UNEF THREAD

PART NUMBER

13	1/8" - 24	AT13/U063/SF45/
13	1/8" - 20	AT13/U075/SF45/
13	1/6" - 20	AT13/U088/SF45/
16	3/8" - 24	AT16/U063/SF45/
16	3/8" - 20	AT16/U075/SF45/
16	5/8" - 20	AT16/U081/SF45/
16	1/2" - 20	AT16/U088/SF45/
16	5/8" - 20	AT16/U094/SF45/
16	1" - 20	AT16/U100/SF45/
16	1 1/8" - 18	AT16/U119/SF45/
16	1 1/4" - 18	AT16/U131/SF45/
21/22	1 1/2" - 20	AT21/U075/SF45/
21/22	1 3/4" - 20	AT21/U088/SF45/
21/22	1 5/8" - 20	AT21/U094/SF45/
21/22	1" - 20	AT21/U100/SF45/
21/22	1 1/8" - 18	AT21/U113/SF45/
21/22	1 1/4" - 18	AT21/U119/SF45/
21/22	1 3/8" - 18	AT21/U131/SF45/
21/22	1 1/2" - 18	AT21/U138/SF45/

NOMINAL CONDUIT SIZE (mm)

CONNECTOR UNEF THREAD

PART NUMBER

21/22	1 1/8" - 18	AT21/U144/SF45/
21/22	1 1/4" - 18	AT21/U175/SF45/
28	1 1/8" - 20	AT28/U088/SF45/
		AT28/U094/SF45/
28	1 5/8" - 20	AT28/U100/SF45/
28	1" - 20	AT28/U119/SF45/
28	1 1/8" - 18	AT28/U138/SF45/
28	1 1/4" - 18	AT28/U144/SF45/
28	1 1/8" - 18	AT28/U175/SF45/
28	1 1/4" - 18	AT28/U200/SF45/
28	2" - 18	AT28/U225/SF45/
28	2 1/2" - 18	AT34/U100/SF45/
34	1" - 20	AT34/U119/SF45/
34	1 1/8" - 18	AT34/U144/SF45/
34	1 1/8" - 18	AT34/U175/SF45/
34	1 1/4" - 18	AT34/U200/SF45/
34	2" - 18	AT42/U175/SF45/
42	1 1/2" - 18	AT42/U200/SF45/
42	2" - 18	

To order quote part no., body colour & elastomer colour - e.g. AT13/U063/A/BLY

SWIVEL COUPLER NEW

STRAIGHT PA66 BODY - SWIVEL COUPLER
For coupling to corrugated flexible conduit.

Polyamide (Nylon) 66/TPE
Body Colour Black (BL) & Grey (GR).
Yellow (Y) & Blue (B) Elastomer



PART NUMBER

AT13/A/U
AT16/A/U
AT21/A/U
AT28/A/U
AT34/A/U
AT42/A/U
AT48/A/U
AT54/A/U

Add body & elastomer colour to part no. /BLY or /BLB

Add body & elastomer colour to part no. /BLY, /BLB, /GRY, or /GRB

IP Rating with appropriate fitting

- IP66
- IP67
- IP68
- IP69k

Temperature Range

For use with following conduit;
Type PA, PI, CP, PR & PADL

- Yes
- Yes
- Yes (4 bar 30 mins)
- Yes

Static Applications: -50 °C to +120 °C
Moving Applications: -45 °C to +120 °C



Approvals

For use with following conduit;
Type PA, PI, CP, PR & PADL

- Yes
- Yes
- Yes (4 bar 30 mins)
- Yes

Static Applications: -50 °C to +120 °C
Moving Applications: -45 °C to +120 °C





PRODUCT CHARACTERISTICS

Type	TYPE FL/A - ADAPTALOK NEW	TYPE FL/C90 - ADAPTALOK NEW	TYPE FL/45 - ADAPTALOK NEW
Description	STRAIGHT PANEL MOUNTING SWIVEL FLANGE with integral face seal.	90° ELBOW BODY - PANEL MOUNT FLANGE For panel mounting via 2 hole fixing & integral face seal.	45° PANEL MOUNTING SWIVEL FLANGE with integral face seal.
Materials	Polyamide (Nylon) 66/TPE Body Colour Black (BL) & Grey (GR). Yellow (Y) & Blue (B) Elastomer	Polyamide (Nylon) 66/TPE Body Colour Black (BL) & Grey (GR). Yellow (Y) & Blue (B) Elastomer	Polyamide (Nylon) 66/TPE Body Colour Black (BL) & Grey (GR). Yellow (Y) & Blue (B) Elastomer
Example			
NOMINAL CONDUIT SIZE (mm)	PART NUMBER	PART NUMBER	PART NUMBER
13	-	AT13/FL/C90	-
16	-	AT16/FL/C90	AT16/FL/45
21/22	AT21/FL/A	AT21/FL/C90	AT21/FL/45
28	AT28/FL/A	AT28/FL/C90	AT28/FL/45
34	-	-	-
42	-	-	-
48	-	-	-
54	AT54/FL/A	-	AT54/FL/45

Add body & elastomer colour to part no. /BLY, /BLB, /GRY, or /GRB

IP Rating with appropriate fitting	For use with following conduit; Type PA, PI, CP, PR & PADL	For use with following conduit; Type PA, PI, CP, PR & PADL	For use with following conduit; Type PA, PI, CP, PR & PADL
IP66	Yes	Yes	Yes
IP67	Yes	Yes	Yes
IP68	Yes (4 bar 30 mins)	Yes (4 bar 30 mins)	Yes (4 bar 30 mins)
IP69k	Yes	Yes	Yes
Temperature Range	Static Applications: -50 °C to +120 °C Moving Applications: -45 °C to +120 °C	Static Applications: -50 °C to +120 °C Moving Applications: -45 °C to +120 °C	Static Applications: -50 °C to +120 °C Moving Applications: -45 °C to +120 °C
Fitting Characteristics			
Approvals	 	 	

Adaptaseal non-metallic system

LIQUID TIGHT COMPRESSION FITTINGS & ACCESSORIES

PRODUCT CHARACTERISTICS

To order quote part no & colour - e.g. ASF10/M16/A/BL

Type
Description
Materials
Example

TYPE A - ADAPTASEAL

STRAIGHT FITTING - FIXED EXTERNAL THREAD
For insertion into threaded entries & knockouts.
Locknut supplied with METRIC THREAD ONLY

Polyamide (Nylon) 66
Colour Black (BL) & Grey (GR).



TYPE C90 - ADAPTASEAL

90° ELBOW FITTING - FIXED EXTERNAL THREAD
For insertion into knockouts using a locknut.
Locknut supplied with METRIC THREAD ONLY

Polyamide (Nylon) 66
Colour Black (BL) & Grey (GR).



TYPE FLC90/FL90 - ADAPTASEAL

90° ELBOW FITTING - PANEL MOUNT FLANGE
For panel mounting via 2/4 hole fixing & integral face seal

Polyamide (Nylon) 66
Colour Black (BL) only.



NOMINAL CONDUIT SIZE (mm)	CONDUIT PITCH F = FINE (-) COARSE	METRIC THREAD	PART NUMBER	PG THREAD	PART NUMBER
10	F	M16	ASF10/M16/A	PG9	ASF10/PG9/A
13	F	M16	ASF13/M16/A	PG9	ASF13/PG9/A
16	F	M16	ASF16/M16/A	PG11	ASF16/PG11/A
16	F	M20	ASF16/M20/A	PG13.5	ASF16/PG13/A
21	F	M20	ASF21/M20/A	PG16	ASF21/PG16/A
21	C	M20	ASC21/M20/A	PG16	ASC21/PG16/A
28	F	M25	ASF28/M25/A	PG21	ASF28/PG21/A
28	C	M25	ASC28/M25/A	PG21	ASC28/PG21/A
34	F	M32	ASF34/M32/A	PG29	ASF34/PG29/A
34	C	M32	ASC34/M32/A	PG29	ASC34/PG29/A
42	C	M40	ASC42/M40/A	PG36	ASC42/PG36/A
54	C	M50	ASC54/M50/A	PG48	ASC54/PG48/A

Note. PF & NPT thread sizes available

METRIC THREAD	PART NUMBER	PG THREAD	PART NUMBER
M16	ASF10/M16/C90	PG9	ASF10/PG9/C90
M16	ASF13/M16/C90	PG9	ASF13/PG9/C90
M16	ASF16/M16/C90	PG11	ASF16/PG11/C90
M20	ASF16/M20/C90	PG13.5	ASF16/PG13/C90
M20	ASF21/M20/C90	PG16	ASF21/PG16/C90
M20	ASC21/M20/C90	PG16	ASC21/PG16/C90
M25	ASF28/M25/C90	PG21	ASF28/PG21/C90
M25	ASC28/M25/C90	PG21	ASC28/PG21/C90
M32	ASF34/M32/C90	PG29	ASF34/PG29/C90
M32	ASC34/M32/C90	PG29	ASC34/PG29/C90
M40	ASC42/M40/C90	PG36	ASC42/PG36/C90
M50	ASC54/M50/C90	PG48	ASC54/PG48/C90

Note. PF & NPT thread sizes available

PART NUMBER
-
ASF13/FL/C90
ASF16/FL/C90
-
ASF21/FL/C90
ASC21/FL/C90
ASF28/FL/C90
ASC28/FL/C90
ASF34/FL/90
ASC34/FL/90
ASC42/FL/90
ASC54/FL/90

IP Rating with appropriate fitting

IP40

IP65

IP66

IP67

IP68

NEW IP69k

Temperature Range

For use with following conduit;
Type PA, PI, CP & PR

n/a

n/a

Type PA, PI, CP & PR conduit

Type PA, PI, CP & PR conduit

Type PA, PI, CP & PR conduit - 2 bar 30 mins

Type PA, PI, CP & PR conduit

Static Applications: -40 °C to +120 °C
Moving Applications: -5 °C to +120 °C

Fitting Characteristics

For use with following conduit;
Type PA, PI, CP & PR

n/a

n/a

Type PA, PI, CP & PR conduit

Type PA, PI, CP & PR conduit

Type PA, PI, CP & PR conduit - 2 bar 30 mins

Type PA, PI, CP & PR conduit

Static Applications: -40 °C to +120 °C
Moving Applications: -5 °C to +120 °C

For use with following conduit;
Type PA, PI, CP & PR

n/a

n/a

Type PA, PI, CP & PR conduit

Type PA, PI, CP & PR conduit

Type PA, PI, CP & PR conduit - 2 bar 30 mins

Type PA, PI, CP & PR conduit

Static Applications: -40 °C to +120 °C
Moving Applications: -5 °C to +120 °C

Approvals





PRODUCT CHARACTERISTICS

Type

TYPE T - ADAPTASEAL

Description

INSPECTION T-PIECE

For connection to corrugated flexible conduit.

Materials

Polyamide (Nylon) 66
Colour Black (BL) only.

Example

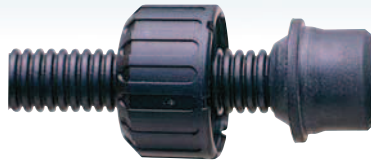


TYPE RK - ADAPTASEAL

REDUCING KIT

For connection to a reduced conduit size

Polyamide (Nylon) 66 & Neoprene Rubber
Colour Black (BL) only.



TYPE AWB

ANTI-VIBRATION WASHER

Prevents fitting loosening under vibration.

Acetal (POM)

Colour Black (BL) only.



FOR CONNECTION
TO NOMINAL CONDUIT
SIZE (mm)

CONDUIT PITCH
F = FINE C = COARSE

FOR CONNECTION TO NOMINAL CONDUIT SIZE (mm)	CONDUIT PITCH F = FINE C = COARSE	METRIC THREAD	PART NUMBER
10	F	10	ASF10X3/T
13	F	13	ASF13X3/T
16	F	16	ASF16X3/T
21	F	21	ASF21X3/T
21	C	21	ASC21X3/T
28	F	28	ASF28X3/T
28	C	28	ASC28X3/T
34	F	34	ASF34X3/T
34	C	34	ASC34X3/T

REDUCING TO
CONDUIT SIZE 10

REDUCING TO
CONDUIT SIZE 15

REDUCING TO
CONDUIT SIZE 16

REDUCING TO
CONDUIT SIZE 21

REDUCING TO
CONDUIT SIZE 28

PART NUMBER

-	-	-	-	-	AWB13
RK13-10	-	-	-	-	AWB13
RK16-10	RK16-13	-	-	-	AWB16
RK21-10	RK21-13	RK21-16	-	-	AWB21
RK21-10	RK21-13	RK21-16	-	-	AWB21
-	RK28-13	RK28-16	RK28-21	-	AWB28
-	RK28-13	RK28-16	RK28-21	-	AWB28
-	-	-	RK34-21	RK34-28	AWB34
-	-	-	RK34-21	RK34-28	AWB34

IP Rating with
appropriate fitting

IP40

IP65

IP66

IP67

IP68

NEW IP69k

Temperature Range

Fitting Characteristics

Approvals

For use with following conduit;
Type PA, PI, CP & PR

n/a

n/a

Type PA, PI, CP & PR conduit

Type PA, PI, CP & PR conduit

n/a

n/a

Static Applications: -40 °C to +120 °C
Moving Applications: -5 °C to +120 °C



For use with following conduit;
Type PA, PI, CP & PR

n/a

n/a

Type PA, PI, CP & PR conduit

Type PA, PI, CP & PR conduit

n/a

n/a

Static Applications: -40 °C to +120 °C
Moving Applications: -5 °C to +120 °C



Adaptating non-metallic system

FREELY ROTATING SWIVEL COMPRESSION FITTINGS



PRODUCT CHARACTERISTICS

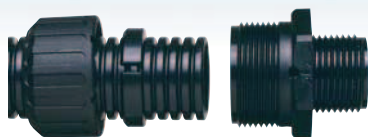
To order quote part no & colour - e.g. AR13/M16/A/BL

Type
Description
Materials
Example

TYPE A - ADAPTARING

STRAIGHT FITTING - FIXED EXTERNAL THREAD
For insertion into threaded entries & knockouts.
Locknut supplied with METRIC THREAD ONLY

Polyamide (Nylon) 66 & Acetal (POM)
Colour Black (BL) only.



NOMINAL CONDUIT SIZE (mm)

	METRIC THREAD	PART NUMBER	PG THREAD	PART NUMBER
13	M16	AR13/M16/A	PG9	AR13/PG9/A
16	M16	AR16/M16/A	PG11	AR16/PG11/A
16	M20	AR16/M20/A	PG13.5	AR16/PG13/A
21	M20	AR21/M20/A	PG16	AR21/PG16/A
28	M25	AR28/M25/A	PG21	AR28/PG21/A
34	M32	AR34/M32/A	PG29	AR34/PG29/A
42	M42	AR42/M40/A	PG36	AR42/PG36/A
54	M50	AR54/M50/A	PG48	AR54/PG48/A

Note. PF & NPT thread sizes available

TYPE C90 - ADAPTARING

90° ELBOW FITTING - FIXED EXTERNAL THREAD
For insertion into knockouts.
Locknut supplied with METRIC THREAD ONLY

Polyamide (Nylon) 66 & Acetal (POM)
Colour Black (BL) only.



	METRIC THREAD	PART NUMBER
	M13	AR13/M16/C90
	M16	AR16/M16/C90
	M20	AR16/M20/C90
	M20	AR21/M20/C90
	M25	AR28/M25/C90
	M32	AR34/M32/C90
	M40	AR42/M40/C90
	M50	AR54/M50/C90

Note. PF & NPT thread sizes available

TYPE T - ADAPTARING

ROTATIONAL INSPECTION T-PIECE
For connection to corrugated flexible conduit.

Polyamide (Nylon) 66 & Acetal (POM)
Colour Black (BL) only.



	PART NUMBER
	AR13X3/T
	-
	AR16X3/T
	AR21X3/T
	AR28X3/T
	AR34X3/T
	-
	-

For use with following fittings;
Type PA, PI, CP & PR

Type PA, PI, CP & PR conduit

n/a
n/a
n/a
n/a
n/a
n/a

Static Applications: -40 °C to +120 °C
Moving Applications: -5 °C to +120 °C



TYPE AWB

ANTI-VIBRATION WASHER
Prevents fitting loosening under vibration.

Acetal (POM)
Colour Black (BL) only.



	PART NUMBER
	AWB13
	-
	AWB16
	AWB21
	AWB28
	AWB34
	-
	-

IP Rating with appropriate fitting

- IP40
- IP65
- IP66
- IP67
- IP68
- NEW IP69k

Temperature Range

Static Applications: -40 °C to +120 °C
Moving Applications: -5 °C to +120 °C

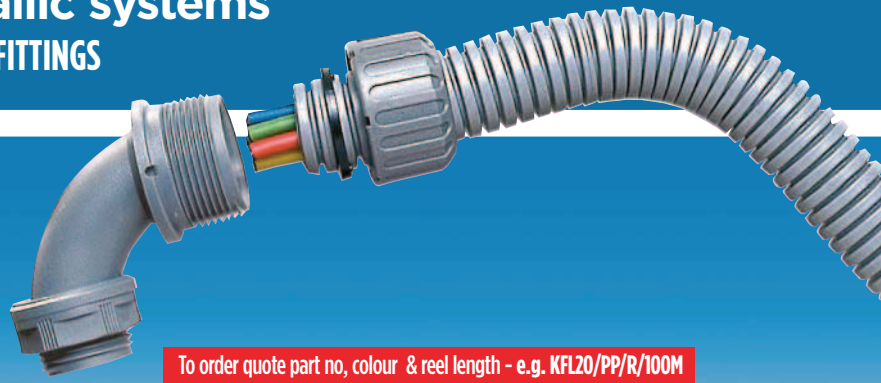
Fitting Characteristics



Approvals

Specialist non-metallic systems

TYPE KF NON-METALLIC CONDUIT & FITTINGS



To order quote part no, colour & reel length - e.g. KFL20/PP/R/100M

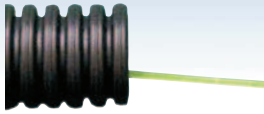
PRODUCT CHARACTERISTICS

Type
Description
Materials
Example

TYPE KF - KORIFIT

MEDIUM WEIGHT 'DRAW-WIRED' CONDUIT

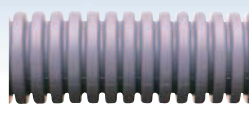
Polyolefin, Nylon Draw-Wire
Colour Black (BL) only.



TYPE KF - KORIFIT

LIGHTWEIGHT CONDUIT

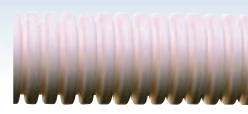
PVCu
Colour Grey (GR) only.



TYPE KF - KORIFIT

STANDARD WEIGHT CONDUIT

PVCu
Colour White (W) only.



TYPE KF - KORIFIT

MEDIUM WEIGHT CONDUIT

PVCu
Colour Black (BL) only.



NOMINAL CONDUIT SIZE (mm)	OUTSIDE DIAMETER (mm)	NW CONDUIT SIZE (mm)	CONDUIT PITCH	F = FINE C = COARSE
16	15.8	13.0	F	
20	21.2	17.0	F	
25	25.6	22.0	F	
32	34.5	29.0	F	
40	42.5	36.0	C	
50	54.5	48.0	C	

PART NUMBER	INSIDE DIAMETER (mm)	MINIMUM BEND RADIUS (mm)	REEL LENGTH (m)
KFM16/PAD	10.3-11.2	48	100
KFM20/PAD	14.2-14.6	60	100
KFM25/PAD	18.2-18.7	75	50
KFM32/PAD	23.2-23.6	96	50
KFM40/PAD	30.5-30.9	160	25
KFM50/PAD	39.2-39.5	200	25

PART NUMBER	INSIDE DIAMETER (mm)	MINIMUM BEND RADIUS (mm)	REEL LENGTH (m)
KFL16	12.1	25	50
KFL20	14.5	30	50
KFL25	19.9	40	50
-	-	-	-
-	-	-	-
-	-	-	-

PART NUMBER	INSIDE DIAMETER (mm)	MINIMUM BEND RADIUS (mm)	REEL LENGTH (m)
KFS16	11.9	25	50
KFS20	14.3	30	50
KFS25	19.7	40	50
-	-	-	-
-	-	-	-
-	-	-	-

PART NUMBER	INSIDE DIAMETER (mm)	MINIMUM BEND RADIUS (mm)	REEL LENGTH (m)
KFM16	11.9	25	50
KFM20	14.3	30	50
KFM25	19.7	40	50
-	-	-	-
-	-	-	-
-	-	-	-

IP Rating with appropriate fitting

IP40

IP65

IP66

IP67

IP68

NEW IP69k

Temperature Range

Static Applications: -5 °C to +90 °C
Moving Applications: -5 °C to +90 °C

UV Resistance

High

Flexibility & Fatigue Life

Medium Flexibility - Low Fatigue Life

Fire Performance & EMI Screen

Approvals



System Applications

General Construction

For use with following fittings; Korifit

Korifit KC Fittings

Korifit KF Fittings

n/a

n/a

n/a

n/a

Static Applications: -5 °C to +60 °C
Moving Applications: -5 °C to +60 °C

High

Pliable - Low Fatigue Life



Light Duty Commercial & Industrial
Prefabricated Concrete Buildings

For use with following fittings; Korifit

Type KC & KF Fittings

Type KC & KF Fittings

n/a

n/a

n/a

n/a

Static Applications: -5 °C to +60 °C
Moving Applications: -5 °C to +60 °C

High

Pliable - Low Fatigue Life

Self Extinguishing



Light Duty Commercial & Industrial
Prefabricated Concrete Buildings
Retail/Offices

For use with following fittings; Korifit

Type KC & KF Fittings

Type KC & KF Fittings

n/a

n/a

n/a

n/a

Static Applications: -5 °C to +60 °C
Moving Applications: -5 °C to +60 °C

High

Pliable - Low Fatigue Life

Self Extinguishing



Light Duty Commercial & Industrial
Prefabricated Concrete Buildings

Specialist non-metallic systems

TYPE KF & PP NON-METALLIC CONDUIT & FITTINGS



PRODUCT CHARACTERISTICS

To order quote part no, colour & reel length - e.g. **KFS16/W/50M**

Type	Description	Materials	Example
NOMINAL CONDUIT SIZE (mm)	OUTSIDE DIAMETER (mm)	NW CONDUIT SIZE (mm)	
16	15.8	13.0	
16	15.8	13.0	
20	21.2	17.0	
25	25.6	22.0	
32	34.5	29.0	
40	42.5	36.0	
50	54.5	48.0	

TYPE KC/A - KORIFIT

STRAIGHT FITTING - FIXED EXTERNAL THREAD
For insertion into threaded entries & knockouts.
Locknut supplied.

Polyamide (Nylon)
Colour Black (BL), Grey (GR) & White (W).



METRIC THREAD	PART NUMBER
M16	KC16/M16/A
M20	KC16/M20/A
M20	KC20/M20/A
M25	KC25/M25/A
M32	KC32/M32/A
M40	KC40/M40/A
M50	KC50/M50/A

TYPE KC/C90 - KORIFIT

90° ELBOW FITTING - FIXED EXTERNAL THREAD
For insertion into knockouts.
Locknut supplied.

Polyamide (Nylon)
Colour Black (BL) only.



METRIC THREAD	PART NUMBER
M16	KC16/M16/C90/BL
-	-
M20	KC20/M20/C90/BL
M25	KC25/M25/C90/BL
M32	KC32/M32/C90/BL
-	-
-	-
-	-

TYPE KF/A - KORIFIT

STRAIGHT FITTING - FIXED EXTERNAL THREAD
For insertion into threaded entries & knockouts.
Locknut supplied.

Polyamide (Nylon)
Colour Black (BL) Grey (GR) & White (W).



METRIC THREAD	PART NUMBER
M16	KF16/M16/A/
M20	KF16/M20/A/
M20	KF20/M20/A/
M25	KF25/M25/A/
-	-
-	-
-	-
-	-

COUPLER - KORIFIT

STRAIGHT ONE PIECE COUPLER
For coupling to corrugated flexible conduit.

Polyamide (Nylon)
Colour White (W) only.



PART NUMBER
-
-
KF2020/
-
-
-
-

IP Rating with appropriate fitting

- IP40
- IP65
- IP66
- IP67
- IP68
- NEW IP69k

Temperature Range

For use with following conduit;
KORIFIT Type KF

Type KF conduit

n/a

n/a

n/a

n/a

n/a

n/a

Static Applications: -5 °C to +60 °C
Moving Applications: -5 °C to +60 °C

UV Resistance

Flexibility & Fatigue Life

Fitting Characteristics

Approvals



For use with following conduit;
KORIFIT Type KF

Type KF conduit

n/a

n/a

n/a

n/a

n/a

n/a

Static Applications: -5 °C to +60 °C
Moving Applications: -5 °C to +60 °C



For use with following conduit;
KORIFIT Type KF

n/a

Type KF conduit

n/a

n/a

n/a

n/a

n/a

Static Applications: -5 °C to +60 °C
Moving Applications: -5 °C to +60 °C



For use with following conduit;
KORIFIT Type KF

n/a

Type KF conduit

n/a

n/a

n/a

n/a

Static Applications: -5 °C to +60 °C
Moving Applications: -5 °C to +60 °C



System Applications



PRODUCT CHARACTERISTICS

To order quote part no & colour - e.g. KF16/M16/A/W

Type

TYPE PP

Description

MEDIUM WEIGHT CONDUIT

Materials

Polypropylene
Colour Black (BL) only.

Example



TYPE PPA - ADAPTALOK

STRAIGHT FITTING - FIXED EXTERNAL THREAD
For insertion into threaded entries & knockouts.
Locknut supplied.

Polypropylene
Colour Black (BL) only.



NOMINAL CONDUIT SIZE (mm)	OUTSIDE DIAMETER (mm)	NW CONDUIT SIZE (mm)
13	13.0	10.0
16	15.8	13.0
21	21.2	17.0
28	28.5	23.0
34	34.5	29.0

PART NUMBER	INSIDE DIAMETER (mm)	MINIMUM BEND RADIUS (mm)	REEL LENGTH (m)
PPFM13	9.8	5	50
PPFM16	12.1	35	50
PPFM21	16.8	40	50
PPFM28	23.1	60	50
PPFM34	29.1	50	50

METRIC THREAD	PART NUMBER
M16	AL13/M16/PPA
M16	AL16/M16/PPA
M20	AL21/M20/PPA
M25	AL28/M25/PPA
M32	AL34/M32/PPA

IP Rating with appropriate fitting

IP40

IP65

IP66

IP67

IP68

NEW IP69k

For use with following fittings;
Adaptalok Type PPA

n/a

n/a

Adaptalok Type PPA Fitting

n/a

n/a

n/a

Temperature Range

Static Applications: -20 °C to +90 °C
Moving Applications: -5 °C to +105 °C

UV Resistance

Medium

Flexibility & Fatigue Life

High Flexibility - Medium Fatigue Life

Fitting Characteristics

Approvals



For use with following conduit;
Type PP

n/a

n/a

Type PP conduit

n/a

n/a

n/a

Static Applications: -20 °C to +90 °C
Moving Applications: -5 °C to +105 °C



System Applications

Acid Resisting Environments