

PRODUCT DATASHEET

L 36 W/3000

LUMILUX T8 | Tubular fluorescent lamps 26 mm, with G13 bases



AREAS OF APPLICATION

- Public buildings
- Office lighting
- Industry
- Shops
- Supermarkets and department stores
- Street lighting
- Outdoor applications only in suitable luminaires

PRODUCT BENEFITS

- Proven lamp technology
- Good economy thanks to high efficiency
- Available in many different light colors (2,700...8,000 K) for various applications

PRODUCT FEATURES

- Very good lumen maintenance: 90 % throughout the service lifetime of the lamp
- Good color rendering group: 1B (R_a : 80...89)
- Dimmable
- Top-quality three-band phosphor: LUMILUX



TECHNICAL DATA

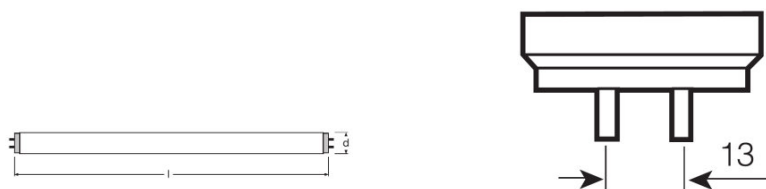
Electrical data

Nominal voltage	220 V
Nominal wattage	36.00 W
Rated lamp efficacy (HF data 25 °C)	Under clarification by authority and standardization body
Rated wattage	36.00 W

Photometrical data

Color rendering index Ra	>80
Rated luminous flux	3350 lm
Luminous flux at 25 °C	3350 lm
Light color	3000
Rated color temperature	3000 K
Nominal luminous flux	3350 lm
Color temperature	3000 K
Luminous flux	3350 lm
Color rendering index Ra	>80

Dimensions & weight



G13
IEC 7004-51
DIN 49653 T1

Tube diameter	26 mm
Length	1200 mm
Length with base excl. base pins/connection	1200.00 mm
Diameter	26.0 mm

Lifespan

Service life	18000 h ¹⁾
Lifespan	20000 h ¹⁾
Rated lamp life time	20000 h
Nominal lamp life time	20000 h

¹⁾ With preheat ECG

Additional product data

Base (standard designation)	G13
Mercury content	4.5 mg
Show WEEE picto	Yes

Capabilities

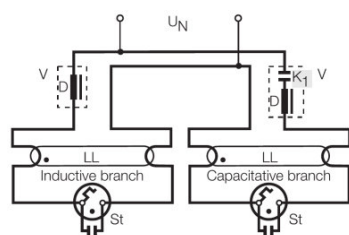
Dimmable	Yes
-----------------	-----

SYSTEM GUARANTEE

OSRAM System+ Guarantee in combination with OSRAM ECGs

SAFETY ADVICE

In case of lamp breakage: www.ledvance.com/brokenlamp



Circuit diagram

LOGISTICAL DATA

Product code	Product description	Packaging unit (Pieces/Unit)	Dimensions (length x width x height)	Volume	Gross weight
4008321544254	L 36 W/3000	Shipping carton box 25	1234 mm x 150 mm x 155 mm	28.69 dm ³	4510.00 g
4008321660268	L 36 W/3000	Shipping carton box 24	1270 mm x 173 mm x 124 mm	27.24 dm ³	5577.00 g
4008321691125	L 36 W/3000	Shipping carton box 25	1253 mm x 151 mm x 153 mm	28.95 dm ³	5526.00 g
4050300926940	L 36 W/3000	Shipping carton box 25	1253 mm x 151 mm x 153 mm	28.95 dm ³	5426.00 g

The mentioned product code describes the smallest quantity unit which can be ordered. One shipping unit can contain one or more single products. When placing an order, for the quantity please enter single or multiples of a shipping unit.

REFERENCES / LINKS

For more information on the system guarantee and the terms and conditions of the guarantee visit

- ▶ www.ledvance.com/system-guarantee

DISCLAIMER

Subject to change without notice. Errors and omission excepted. Always make sure to use the most recent release.