



Home Theatre
Range



For the Best



For the Best

Are you ready for Digital?

DigiMATCH® antennas complete the Digital Picture.

Matchmaster provides the best Domestic and Commercial Digital TV reception systems including design, equipment supply and the best technical expertise.

- TV Antennas and Accessories
- Accredited Training Courses
- MATV, Fibre and CATV solutions
- Australian Made & Australian Owned



Call today for
details of your local
Matchmaster Reseller of
Digital Ready Products!

Toll Free **1800-AERIAL** (1800-237425)

www.matchmaster.com.au



HOME THEATRE

LEADS

04MM-HT01	04.33
04MM-HT02	04.33
04MM-HT04	04.33
04MM-HT05	04.33
04MM-HT06	04.34
04MM-HT07	04.34
04MM-HT08	04.34
04MM-AV03	04.34
04MM-AV05	04.34
04MM-TOS03	04.34

HIGH DEFINITION LEADS

04MM-HDC05	04.35
04MM-HDC1	04.35
04MM-HDC2	04.35
04MM-HDC3	04.35
04MM-HDC5	04.35
04MM-HDC10	04.35
04MM-HDC15	04.35

SPEAKER CABLE

04MM-SPK15-10	04.35
04MM-SPK15-100	04.35
04MM-SPK25-50	04.35

INSERTS

04MM-HTA01	04.36
04MM-HTA02	04.36
04MM-HTA03	04.36
04MM-HTA05	04.36
04MM-HTA06	04.36
04MM-HTA08	04.36
04MM-HTA09	04.36
04MM-HTA11	04.36

OUTLET PLATES

04MM-HTP01	04.37
04MM-HTP02	04.37
04MM-HTP04	04.37
04MM-HTP06	04.37

PLASMA AND LCD MOUNTS

04MM-LCDB2	04.37
04MM-LCDB3	04.37
04MM-PMF1	04.38
04MM-PME2	04.38
04MM-PME3	04.38
04MM-LCDAP	04.38

FLATWIRE KITS

04MM-FWK01	04.39
04MM-FWK02	04.39
04MM-FWK03	04.39

HOME THEATRE ACCESSORIES

04MM-CS01	04.40
04MM-HDRPT	04.40
04MM-HDC01	04.40
04MM-TOS01	04.40



For the Best

Toll Free: 1800-AERIAL (1800-237425)
www.matchmaster.com.au



LEADS

Features for ALL Leads

- 1.8m length
- The Best Picture Quality with 24K gold-plated split-centre pin, stabilised with 6-finger, laser-tooled gripping connector for a secure connection
- 100% pure, oxygen free, multi-faceted copper conductor minimises resistance and maximises signal transfer providing definition plus picture reproduction
- Double-shielded cable construction ensures the Best Picture and Sound quality. (YPrPb)
- Balanced and directional noise-drain construction isolates and protects the signal you want to hear while eliminating distortion

* Indoor use only. Do not allow exposure to moisture or harmful outside elements.

Quality of picture and sound are dependent on a variety of factors, including the type of equipment, cables and signal source.

Component Video/Optical Audio Cable

04MM-HT01

Application

Utilised for connecting your DVD/Set Top Box to the component/optical audio inputs on your TV/Plasma or Amplifier. Also suitable for RGB connections.



Component Video/Stereo Cable

04MM-HT02

Application

The component leads are utilised for connecting your DVD/Set Top Box to the component input on your TV or Plasma. Also suitable for RGB connections. Ensure that the correct coloured matching plugs are used between sources.



Stereo Audio Cable

04MM-HT04

Application

The Stereo audio cable can be utilised for connecting audio from your AV source to your TV or Plasma. Ensure that the correct coloured matching plugs are used between sources.



DVID Plug to DVID

04MM-HT05

Application

Utilised for connecting video from your AV source to your TV or Plasma.





S-Video Cable

04MM-HT06

Application

The S-Video cable can be utilised for connecting video from your AV source to your TV or Plasma.



S-Video/Stereo Audio Cable

04MM-HT07

Application

The S-Video/Stereo Audio cables can be utilised for connecting video and audio from your AV source to your TV or Plasma. Ensure that the correct coloured matching plugs are used between sources.



Digital Coaxial Video/Audio Cable

04MM-HT08

Application

Digital Coaxial Video/Audio Cable. Utilised for connecting either audio or video from your AV source to your TV or Plasma.

CLEARANCE DEALS

Call Us Now

HOME *theatre*

AV Leads

04MM-AV03

Features

- 3 x RCA male to 3 x RCA male
- 3m length

NEW!

04MM-AV05

Features

- 3 x RCA male to 3 x RCA male
- 5m length



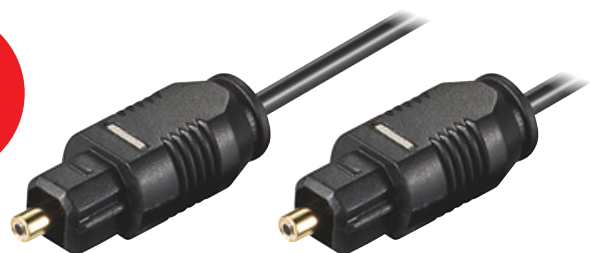
TOSLINK

04MM-TOS03

Features

- Toslink to Toslink Optical lead
- 3m length

NEW!





HIGH DEFINITION LEADS

Application

Utilised for connecting your TV to your DVD Player, Blu-Ray, Gaming Console, HD Set Top Box etc.

Features

- 360° Swivel Adaptors to ensure easier installation of connecting your equipment in difficult hard to reach applications
- 30 AWG Nickel Plated
- High Speed with parallel Ethernet to allow high speed, bi-directional communication
- Extreme performance 10.2Gbp/s
- Pay TV approved, VI.4 version



High Speed HDMI Cables with Ethernet - 360° Swivel Adaptors

0.5m length

04MM-HDC05

1m length

04MM-HDC1



2m length

04MM-HDC2



3m length

04MM-HDC3

10m length

05MM-HDC10

5m length

05MM-HDC5

15m length

04MM-HDC15



SPEAKER CABLE

HOME theatre

High Quality Speaker Cable - 50m roll

04MM-SPK25-50

Features

- 14AWG
- Oxygen Free Solid Copper
- 2 x 80/0.19mm
- Figure 8 configuration
- Red strip tracer
- 50m roll



High Quality Speaker Cable - 10m roll

04MM-SPK15-10

High Quality Speaker Cable - 100m roll

04MM-SPK15-100

Features

- 16AWG
- Oxygen Free Solid Copper
- 2 x 48/0.19mm
- Figure 8 configuration
- Red strip tracer
- 100m roll

NEW!



- 01
- 02
- 03
- 04
- 05
- 06
- 07
- 08
- 09
- 10
- 11
- MM
- T
- 12
- 13
- 14
- 15
- 16
- 17
- 18
- 19
- 20
- 21
- 22
- 30

INSERTS

Female Pal Insert

04MM-HTA01



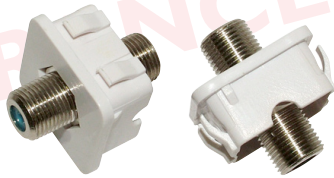
HDMI Output Plate Insert

04MM-HTA11



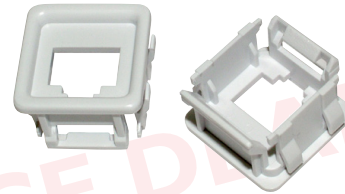
Female to Female Insert

04MM-HTA03



PDL to Keystone Adaptor

04MM-HTA02



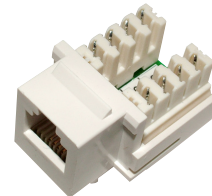
Blank Insert

04MM-HTA05



RJ12 Insert

04MM-HTA06



Female to RCA - Blue, Green, Red

04MM-HTA08



Female to RCA - White, Yellow, Red

04MM-HTA09



*** See section 05MM for new range**



OUTLET PLATES

1 Way Outlet Plate

04MM-HTP01



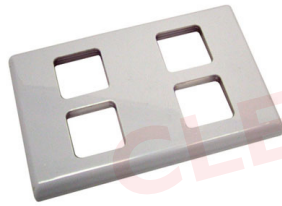
2 Way Outlet Plate

04MM-HTP02



4 Way Outlet Plate

04MM-HTP04



6 Way Outlet Plate

04MM-HTP06



* See section 05MM for new range

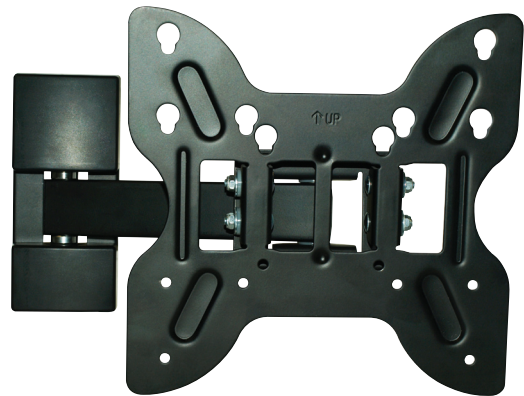
PLASMA & LCD MOUNTS

LCD TV Wall Mount 5-15° Tilt Action

04MM-LCDB2

Features

- VESA Standard
- Extends 24cm from wall
- Holds weight up to 36kg
- 5 - 15° tilt
- Easy slide in installation and removal
- Cable management organises cables neatly
- Rigid extruded aluminium construction & anodised finish
- Integrated spirit level for simple and accurate install



LCD TV Wall Mount ± 15° Tilt Action with extendable arm

04MM-LCDB3

Features

- VESA Standard
- Extends 38.5cm from wall
- 180° swivel ± 15° tilt control
- Rigid extruded aluminium construction
- Integrated spirit level for simple and accurate install
- Holds weight up to 25kg
- Knob adjustment allows for up to 15° tilt control
- Cable management organises cables neatly



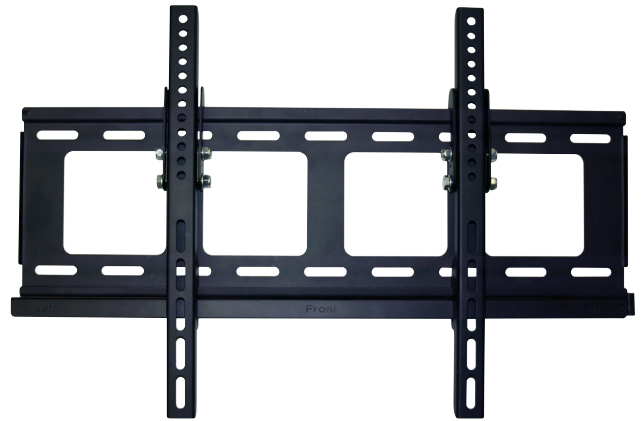


Plasma Mount Fixed

04MM-PMF1

Features

- Compatible with all hole patterns including VESA standard
- Low profile - mounts less than 5cm (2") from the wall
- Expandable arms to fit screens 32" - 50"
- Easy installation - Lift and hook design
- Sturdy steel construction holds up to 50kgs
- Integrated spirit level for simple and accurate install



Plasma Mount Fixed

04MM-PME2

Features

- Compatible with all hole patterns including VESA standard
- Expandable arms and cross bar to fit screens 32" - 60"
- Full sized universal wall mount with 15° adjustable tilt
- Easy & quick installation - Lift and Hook design
- Sturdy steel construction holds up to 90kgs
- Integrated spirit level for simple and accurate install

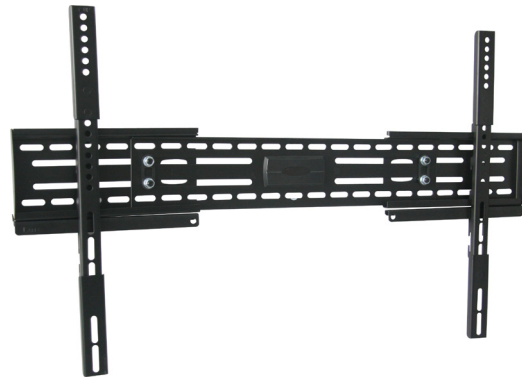


Flat Panel TV/Plasma Mount

04MM-PME3

Features

- Low profile - mounts less than 4cm from the wall
- Full sized universal wall mount back plate
- Extension arms to fit screens 26" - 65"
- Two height positions on arms
- Variety of mounting holes in rear plate
- Easy installation
- Sturdy construction holds up to 50kgs
- Compatible with all hole patterns including VESA standard



- Magnetic spirit level for simple and accurate install
- Built-in Safety lock keeps your flat panel TV safe and stable
- Wall plate and Arm unit both extendable

Plasma TV & LCD Universal Adaptor Plate

04MM-LCDAP

Features

- Allows VESA compliant mounts to fit non-VESA screens
- Suitable for use with 04MM-LCDB2 & 04MM-LCDB3
- Adapts to any mounting pattern between 140 x 145mm & 390 x 300mm
- Fits VESA 75 and VESA 100 mounts
- Hardware included





FLATWIRE KITS

A discrete way to distribute many different signal types around the home or office. Wiretape is no thicker than a business card so it can be installed virtually anywhere.

- Under Carpet
- Under Tiles
- Behind Skirting Boards
- Under Plaster
- Under Floor Boards

Invisible Flat Cable

Wiretape is a virtually invisible flat cable that can be hidden underneath items or even painted over. It enables a discrete connection of amplifiers, TV sets, speakers, and other audio visual equipment.

Typical applications include

- Connecting rear speakers
- Connecting projectors
- Wall mounting plasma and LCD television sets
- Connecting satellite receivers

Features

- Can be used with spray adhesives
- Only as thick as a business card
- Can be bent at 90 degrees
- No tools required
 - Wire can be cut by scissors
 - Press down connections
- Flat Flexible Design
- Ultra-thin and Space Saving
- Advantage of changing different connectors on the same Wiretape
- Easy to install

NB: Cable must have same connection / adaptor at both ends of the length of cable



HDMI Adaptor Wiretape Kit

04MM-FWK01

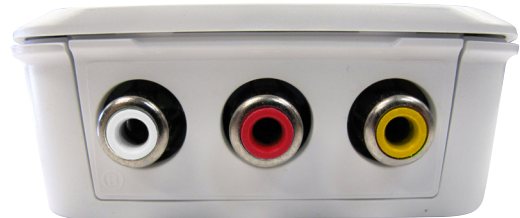
2 x HDMI Adaptors, 3.5m Wiretape, 2 x 30cm Connection Leads
18 Lane Wiretape



Composite Video and Stereo Audio Wiretape Kit

04MM-FWK02

2 x AV Adaptors, 5m Wiretape, 2 x 30cm Connection Leads
5 Lane Wiretape



TV Signals Wiretape Kit

04MM-FWK03

2 x 'F' Type Adaptors, 5m Wiretape, 2 x 30cm Connection Leads
5 Lane Wiretape



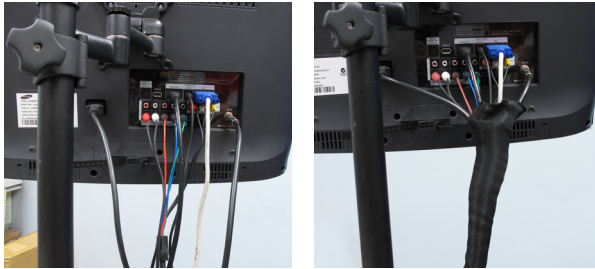


HOME THEATRE ACCESSORIES

25mm Cable Sleeve 25m Reel

04MM-CS01

The 04MM-CS01 Cable Sleeve can slide over up to 10 cables at a time, allowing the appearance of cables to be neat and tidy. Perfect for the install of a Home Theatre system. It is available in a 25m Reel which can be cut to length as required and can be used over and over.



BEFORE

AFTER



HDMI Repeater

Female to Female HDMI ports

04MM-HDRPT

Features

- High Speed HDMI
- 1080P
- HDCP conform
- Gold plated
- Max length to transfer signal up to 40M
- Max input HDMI cable up to 35M and max output HDMI cable up to 5M
- Product requires a power supply unit



HDMI Right Angle Adaptor

04MM-HDC01



Toslink Plug to Toslink Jack
Right Angled Connector

04MM-TOS01

Features

- Right Angle application



01
02
03
04
05
06
07
08
09
10
11
MM
T
12
13
14
15
16
17
18
19
20
21
22
30



For the Best

Are you ready for Digital?

DigiMATCH® antennas complete the Digital Picture.

Matchmaster provides the best Domestic and Commercial Digital TV reception systems including design, equipment supply and the best technical expertise.

- TV Antennas and Accessories
- Accredited Training Courses
- MATV, Fibre and CATV solutions
- Australian Made & Australian Owned



Call today for
details of your local
Matchmaster Reseller of
Digital Ready Products!

Toll Free **1800-AERIAL** (1800-237425)

www.matchmaster.com.au