

# POWER BLOCK



## Powerblock Valve Regulated AGM Sealed Lead Acid battery

A versatile and rugged range of VRLA batteries for a broad range of domestic, commercial and industrial standby applications.

- Completely maintenance-free, sealed construction eliminates the need for watering
- Fully tank-formed plated
- Low impurity electrolyte
- Spill proof / Leak proof
- Multi-position usage
- Low self discharge
- Approved as non-hazardous for air and road transport
- Approved to AS1603 for Fire Indicator and Control Panels



### Applications include:

- Uninterruptible Power Supplies (UPS)
- Emergency Lighting
- Fire / Alarm panel
- Evacuation Systems
- Communications



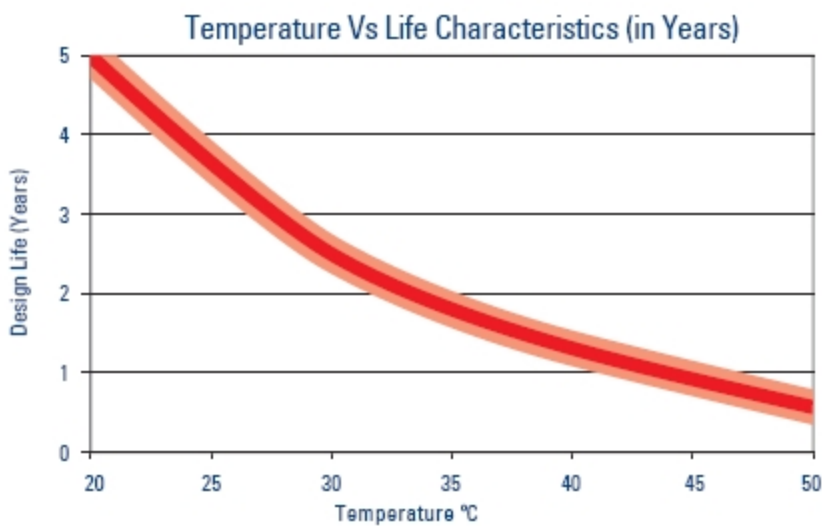
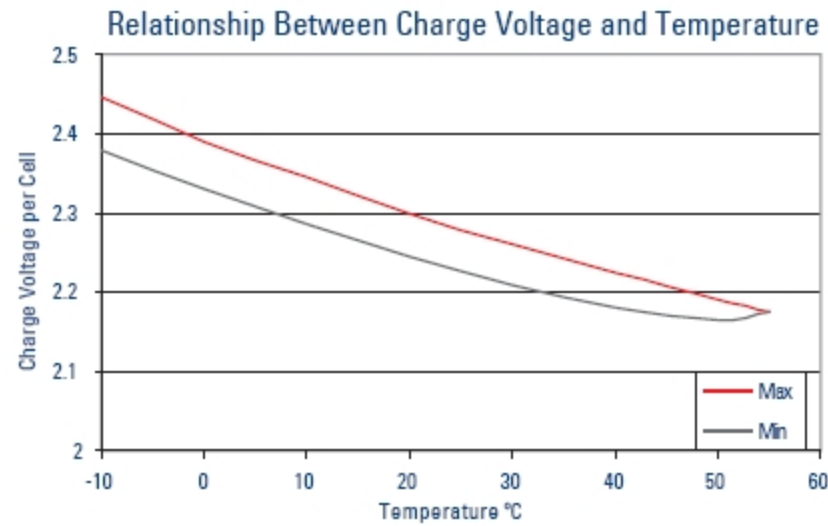
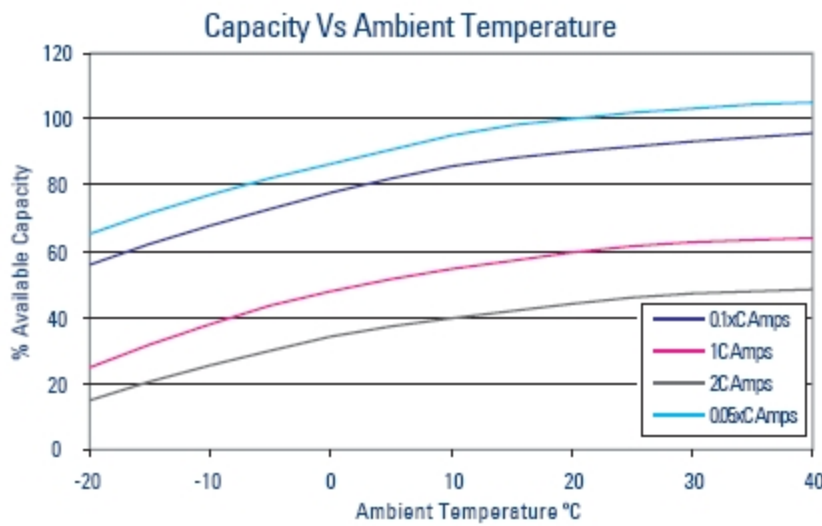
**m**power



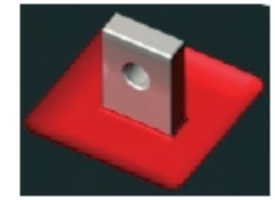
# SPECIFICATIONS\*

Battery Model	Dimensions & Weight (mm & Kg)					Terminal Type	Terminal Position	Pcs Per Box
	Length L	Width W	Height H	Inc Tabs H	Weight Kg			
PB6-1.3	98	25	52	56	0.32	T1	B	40
PB6-3.2	134	34	60	66	0.73	T1	B	20
PB6-4.5	70	48	101	106	0.81	T1	A	20
PB6-7.2	150	34	94	100	1.27	T1	B	10
PB6-12	151	50	93.5	99.5	2.00	T2	B	10
PB6-14TOY	108	68.5	140	140	2.37	T2	B	10
PB12-0.8	96	25	62	62	0.37	T1	Cable	20
PB12-1.3	96.5	45	53	59	0.58	T1	E	20
PB12-2.2	177.5	34	60	66	1.01	T1	B	20
PB12-2.9S	78	55	98	104	1.16	T1	B	10
PB12-3.3	133.5	67	61	67	1.40	T1	C	10
PB12-4.5	90	70	101	107	1.64	T1	D	10
PB12-5HR	140	48	103	108	1.85	+T2 -T1	B	10
PB12-7	151	65	94	99	2.35	T1	D	8
PB12-9HR	151	65	94	99	2.63	T2	D	8
PB12-10	151	65	110	116	3.1	T2	D	8
PB12-12	150	97	94	99	4.10	T2	D	4
PB12-18	180	76	167	167	6.30	Copper Flag	C	2
PB12-26	165	174.5	125	125	9.20	Copper Flag	C	1
PB12-33	193.5	130	166.5	166.5	10.90	Lead Flag	B	1
PB12-44	196	164	170.5	170.5	13.60	Copper Flag	C	1
PB12-65J	350	166	174	174	21.50	Copper Flag	C	1

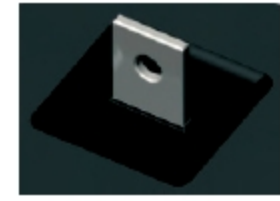
\* Specifications subject to change without notice.



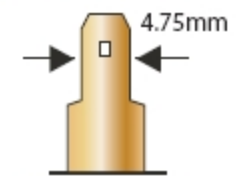
## Terminal types



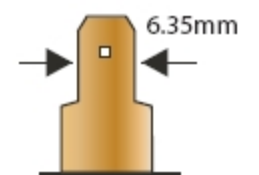
Lead Flag



Copper Flag

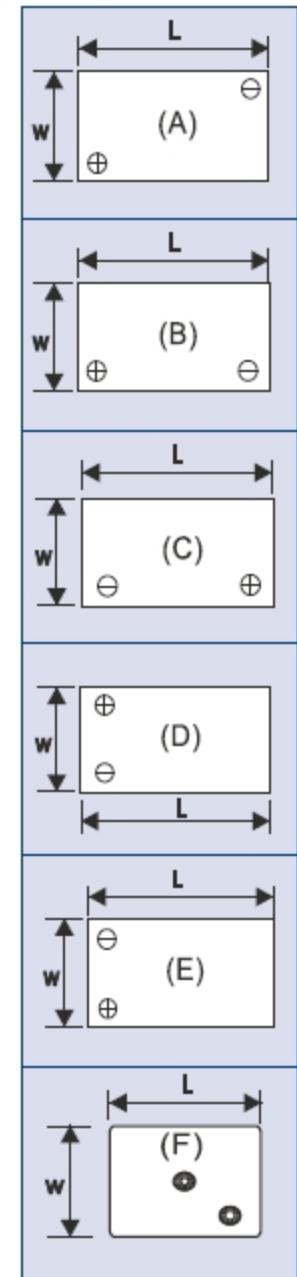


T1 Terminal



T2 Terminal

## Terminal configurations



M+H Power Systems Pty Ltd  
 ABN 96 051 792 833  
 info@mpower.com.au  
 Australia Ph: 1300 733 004  
 New Zealand Ph: (9)415 6615