

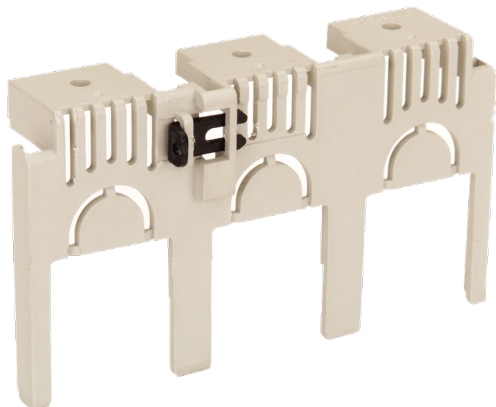
# Catalogue No: **T2CS161SG**

## T2 TERMINAL COVER FLUSH FOR S160 1P

Power Distribution and Protection > Circuit Breakers > Moulded Case Circuit Breakers > TemBreak2 Accessories > TemBreak 2 External Accessories 125 AF to 1600 AF > Terminal Cover Flush Type T2CS



### TB2 Flush Terminal Covers 1P S160NF



Representative Photo Only  
(actual product may vary based on configuration selections)

#### SPECIFICATIONS

Details, compatible product series	S160NF
Component Type MCCB	Terminal Cover / Interpole Barrier
Number of Poles	1
Compatible Frame Size(s)	125 AF compatible
Package Quantity	2 qty

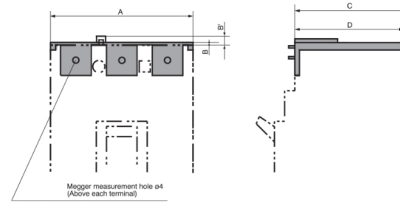
#### REFERENCES

IECEx Certificate	-
Supplier Declaration of Conformity:	-
Installation Guide:	-
User Manual:	-
Manufacturer Datasheet:	-
Manufacturer Catalogue & Product Selection:	-

# Catalogue No: T2CS161SG

## T2 TERMINAL COVER FLUSH FOR S160 1P

Power Distribution and Protection > Circuit Breakers > Moulded Case Circuit Breakers > TemBreak2 Accessories > TemBreak 2 External Accessories 125 AF to 1600 AF > Terminal Cover Flush Type T2CS

Dimensions (in mm)

Breaker	Connection	A			B			B <sup>1</sup>		C			D		
		1P	3P	4P	1P	3P	4P	3P	4P	1P	3P	4P	1P	3P	4P
E125, S125, ZS125	Front (long)	30	90	120	40	40	40	—	48	48	48	46	46	46	
	Front (short)	—	90	120	—	22	22	—	—	48	48	—	46	46	
	Tunnel clamp	30	90	120	2.5	2.5	2.5	6	62.5	61	61	60	59.5	59.5	
S160	Front <sup>1)</sup> (long)	35	105	140	55	55	55	—	54	54	54	52	52	52	
E250, S250 (except S250-PE) ZS250	Front (short) <sup>1)</sup>	—	105	140	—	30	30	—	—	54	54	—	52	52	
	Tunnel clamp	35	105	140	2.5	2.5	2.5	6	63	61	61	49.5	59.5	59.5	
H125, L125, H160, L160	Front <sup>1)</sup>	—	105	140	—	55	55	—	—	89	89	—	87	87	
	Tunnel clamp	—	105	140	—	2.5	2.5	4.5	—	96	96	—	59.5	59.5	
H250, L250, S250-PE	Tunnel clamp	—	105	140	—	2.5	2.5	4.5	—	96	96	—	59.5	59.5	
E400, S400	Front (wide)	—	140	185	—	110	110	—	—	97	99	—	96	98	
E630NE, S630CE, S630GE	Front (wide)	—	180	240	—	110	114	—	—	97	99	—	96	98	
	Front (narrow) <sup>1)</sup>	—	140	185	—	80	85	—	—	134	134	—	93	93	
	Tunnel clamp	—	140	185	—	3	3	4.5	—	97	97	—	93	93	
H400, L400	Front (wide)	—	180	240	—	110	114	—	—	134	136	—	96	98	
	Tunnel clamp	—	140	185	—	3	3	4.5	—	134	134	—	93	93	
	Front (wide)	—	180	240	—	110	114	—	—	134	136	—	96	98	
	Tunnel clamp	—	140	185	—	3	3	4.5	—	134	134	—	93	93	

Note: <sup>1)</sup> Not applicable when flat bars (FB) are fitted.

Dimension Diagram