

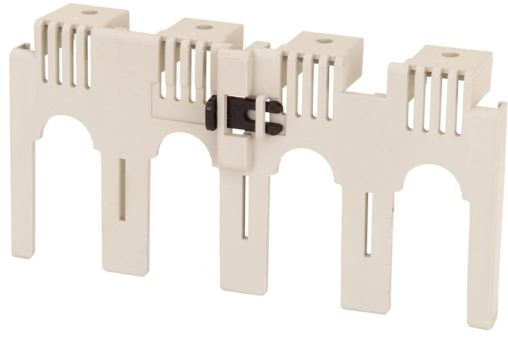
Catalogue No: **T2CS121SG**

T2 TERMINAL COVER FLUSH FOR S125NF 1P

Power Distribution and Protection > Circuit Breakers > Moulded Case Circuit Breakers > TemBreak PRO Moulded Case Circuit Breaker > TemBreak PRO External Accessories for 160AF to 1600AF



TB2 Flush Terminal Covers 1P S125NF



Representative Photo Only
(actual product may vary based on configuration selections)

SPECIFICATIONS

Compatible Product Series'	E125 S125
Details, compatible Product Series	S125NF
Component Type MCCB	Terminal Cover / Interpole Barrier
Number of Poles	1
Compatible Frame Size(s)	125 AF compatible
Package Quantity	2 qty

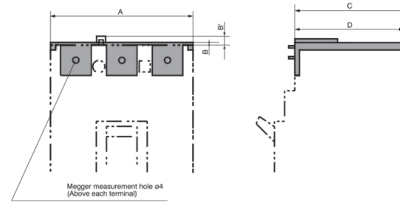
REFERENCES

IECEX Certificate	-
Supplier Declaration of Conformity:	-
Installation Guide:	-
User Manual:	-
Manufacturer Datasheet:	-
Manufacturer Catalogue & Product Selection:	-

Catalogue No: T2CS121SG

T2 TERMINAL COVER FLUSH FOR S125NF 1P

Power Distribution and Protection > Circuit Breakers > Moulded Case Circuit Breakers > TemBreak PRO Moulded Case Circuit Breaker > TemBreak PRO External Accessories for 160AF to 1600AF



Dimensions (in mm)

Breaker	Connection	A			B			B ¹		C			D		
		1P	3P	4P	1P	3P	4P	3P	4P	1P	3P	4P	1P	3P	4P
E125, S125, ZS125	Front (long)	30	90	120	40	40	40	—	48	48	48	46	46	46	
	Front (short)	—	90	120	—	22	22	—	—	48	48	—	46	46	
	Tunnel clamp	30	90	120	2.5	2.5	2.5	6	62.5	61	61	60	59.5	59.5	
S160	Front ¹⁾ (long)	35	105	140	55	55	55	—	54	54	54	52	52	52	
E250, S250 (except S250-PE) ZS250	Front (short) ¹⁾	—	105	140	—	30	30	—	—	54	54	—	52	52	
	Tunnel clamp	35	105	140	2.5	2.5	2.5	6	63	61	61	49.5	59.5	59.5	
H125, L125, H160, L160	Front ¹⁾	—	105	140	—	55	55	—	—	89	89	—	87	87	
	Tunnel clamp	—	105	140	—	2.5	2.5	4.5	—	96	96	—	59.5	59.5	
H250, L250, S250-PE	Tunnel clamp	—	105	140	—	2.5	2.5	4.5	—	96	96	—	59.5	59.5	
E400, S400	Front (wide)	—	140	185	—	110	110	—	—	97	99	—	96	98	
E630NE, S630CE, S630GE	Front (wide)	—	180	240	—	110	114	—	—	97	99	—	96	98	
	Front (narrow) ¹⁾	—	140	185	—	80	85	—	—	134	134	—	93	93	
	Tunnel clamp	—	140	185	—	3	3	4.5	—	97	97	—	93	93	
H400, L400	Front (wide)	—	180	240	—	110	114	—	—	134	136	—	96	98	
	Tunnel clamp	—	140	185	—	3	3	4.5	—	134	134	—	93	93	
	Front (wide)	—	180	240	—	110	114	—	—	134	136	—	96	98	
	Tunnel clamp	—	140	185	—	3	3	4.5	—	134	134	—	93	93	

Note: ¹⁾ Not applicable when flat bars (FB) are fitted.

Dimension Diagram