

Catalogue No: **RHS301**

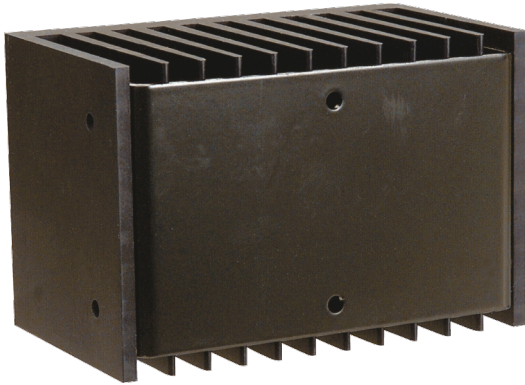
HEATSINK 0.8 K/W

Timers and Control Relays > General Purpose Relays > Solid State Relays > Carlo Gavazzi Solid State Relays > Hockey Puck Solid State Relays > RM/RS/RZ Heatsinks and Accessories



DIN rail, suits RS, RZ and RM series

- Includes direct copper bonding technology for increased life and reliability.
- Long life and noise-free switching makes them ideal replacements for mechanical contactors.
- Complete range of SSR's including with or without a built-in heatsink to suit your custom application requirements.



Representative Photo Only
(actual product may vary based on configuration selections)

SPECIFICATIONS

Mounting	Base Mount
Height	145 mm
Width	122 mm
Depth	125 mm

REFERENCES

IECEX Certificate	-
Supplier Declaration of Conformity:	-
Installation Guide:	-
User Manual:	-
Manufacturer Datasheet:	-
Manufacturer Catalogue & Product Selection:	-