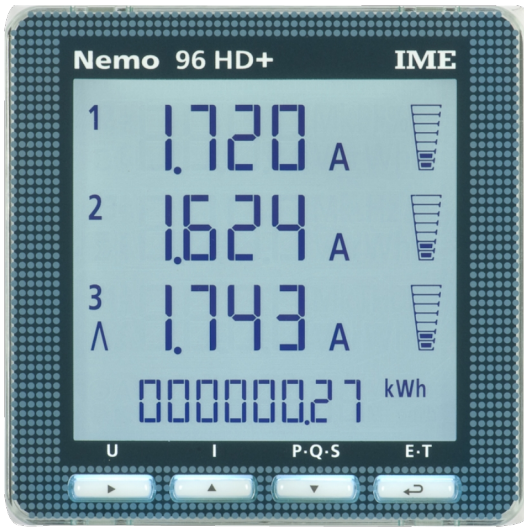


Catalogue No: **NEMO96HD**
NEMO HD MULTI-FUNCTION METER BASE

Energy Management and Building Automation > Energy Management and Metering > Power and Multifunction Meters > IME Power and Multifunction Meters > IME Multifunction Meters > Nemo 96HD



NEMO HD MULTI-FUNC METER BASE (MF96001)

- Quick and easy to install
- Compact modern design
- High accuracy monitoring and measurement to IEC 62053-21
- Easy to read and configure
- Options for remote communication

Representative Photo Only
 (actual product may vary based on configuration selections)

SPECIFICATIONS

Product Series	MF9600 - NEMO96HD
Component Type Metering	Digital Meter
Meter Type(s)	Multifunction
Measurement parameters	1, 3-phase power quality analyser VL-L VL-N VL-L,max VL-L,min THD (V, I) A An Admd Amaxdmd AaveW VA VAR Wdmd VAdmd VARdmd Wmaxdmd VAmxdmd Varmxdmd PF Hz h kWh kVARh
Display Technology	LCD
Details, Display	Backlit. 8 DGT energy, 4 DGT instantaneous. Different pages of measurement display with manual scanning. Automatic engineering units display according to the set VT and CT ratios.
Refresh Time	1.1 s

Catalogue No: **NEMO96HD**

NEMO HD MULTI-FUNCTION METER BASE

Energy Management and Building Automation > Energy Management and Metering > Power and Multifunction Meters > IME Power and Multifunction Meters > IME Multifunction Meters > Nemo 96HD



Details, Input(s)	Input 1-Phase Voltage: Line - Neutral. Input 3-Phase Voltage: Line - Line. Up to 22nd Harmonic.
Input Frequency, Nom	50 Hz
Input Frequency, Max	63 Hz
Input Frequency, Min	47 Hz
Input Range(s)	1 ... 5A
Isn, Secondary Current, Rated	5 A
Isn, Secondary Current, Max	6 A max
Input voltage, 1ph, nom (rms)	230 V AC nom (rms)
Input Voltage, 1ph, min (rms)	50 V AC min (rms)
Input Voltage, 1ph, max (rms)	290 V AC max (rms)
Input voltage, 3ph, nom (rms)	400 V AC nom (rms)
Input Voltage, 3ph, min (rms)	80 V AC min (rms)
Input Voltage, 3ph, max (rms)	500 V AC max (rms)
Accuracy Class, Active	0.5
Accuracy Class, kWh, IEC 61557-12	0.5 IEC 61557-12
Accuracy Class, kVARh, IEC 61557-12	2 IEC 61557-12
Umin, Supply Voltage, AC, Min	80 V AC
Umax, Supply Voltage, AC, Max	265 V AC
Umin, Supply Voltage, DC, Min	110 V DC
Umax, Supply Voltage, DC, Max	300 V DC
Fuse Current Rating	1 A
Fuse Characteristic Type(s)	gG/gN
Accuracy Class, Reactive	2
Power Consumption, Max	3.5 W
Power Dissipation, Max	5 W
Burden, Rated	2.5 VA
Current, Overload Capacity, Continuous	0.006 kA
Current, Overload Capacity, 0.5s	0.1 kA
Ui, Rated Insulation Voltage	300 V (rms)
Mounting	Flush Mount
Pollution Degree	2
Configuration Method	Keypad
Connection Method	CT connect VT connect
Password Protection	Yes
Material, Body / Housing	PC (Polycarbonate) material
Operating Temperature, Min	-5 °C min
Operating Temperature, Max	55 °C max
Storage Temperature, Min	-25 °C min
Storage Temperature, Max	70 °C max
Humidity Type	Short-Term Condensation
Installation Category	III
Terminal Type	Screw Terminal(s)
IP Rating, Front	IP54
IP Rating, Terminals	IP20
Height, Window	92 mm
Width, Window	92 mm
Width	96 mm
Height	96 mm

Catalogue No: **NEMO96HD**
NEMO HD MULTI-FUNCTION METER BASE

Energy Management and Building Automation > Energy Management and Metering > Power and Multifunction Meters > IME Power and Multifunction Meters > IME Multifunction Meters > Nemo 96HD



Depth	62 mm
Weight	0.285 kg
Standards Compliance	EN 61010-1 IEC 61010-1 EN 61326-1 IEC 61326-1 EN 60529 IEC 60529

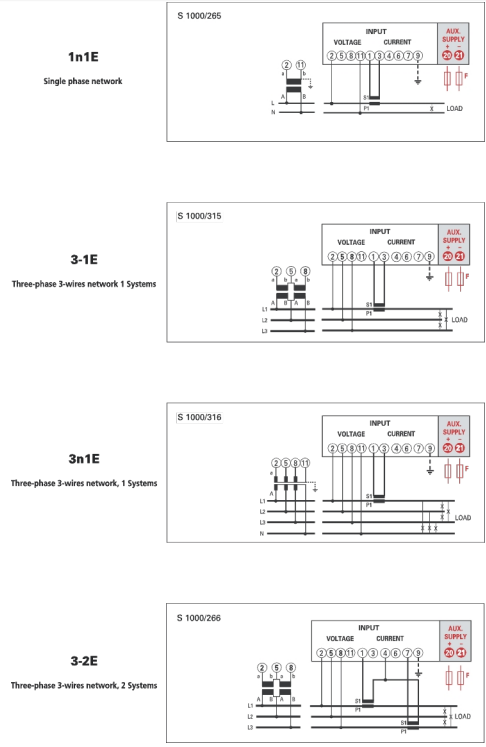
REFERENCES

IECEX Certificate	-
Supplier Declaration of Conformity:	-
Installation Guide:	-
User Manual:	NEMO96HD_User Manual
Manufacturer Datasheet:	NEMO96HD_Manufacturer Datasheet
Manufacturer Catalogue & Product Selection:	-

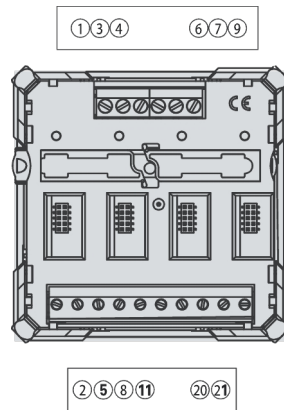
Catalogue No: **NEMO96HD**

NEMO HD MULTI-FUNCTION METER BASE

Energy Management and Building Automation > Energy Management and Metering > Power and Multifunction Meters > IME Power and Multifunction Meters > IME Multifunction Meters > Nemo 96HD



Connection / Wiring Diagram



Technical Diagram