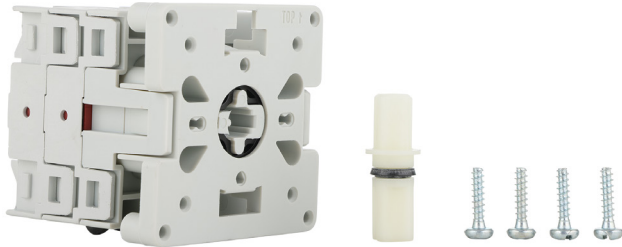


LE2205261

Sprecher and Schuh L2 Cam Switch Switch Body 3 Position
with Off 20A Panel Mount



Component type	Off-load switch
Range	L2 Cam Switch
Model	N/A
Product status	Existing



The Sprecher+Schuh L2 range of rotary cam switches are designed for use in control and load switching based applications rated up to 25A. Available in a wide range of faceplate designs, frame sizes, switch body designs and accessories to suit various switching configurations. The modular construction allows for quick and easy assembly and installation while providing reliable operation.

ELECTRICAL

Number of poles	1.0
Rated operation current I_e at AC-15, 230 V	7.0 A
Rated operation current I_e at AC-15, 400 V	5.0 A
Rated operation current I_e at AC-22a, 690V	20.0 A
Rated operation current I_e at AC-22a, 220-500V	20.0 A
Rated operation current I_e at AC-21a, 690V	20.0 A
Rated operation current I_e at AC-1, 690V	20.0 A
I_{the} , thermal current (enclosed)	20.0 A
I_{th} , thermal current (open)	25.0 A
Number of auxiliary contacts as normally closed contact	0.0
Number of auxiliary contacts as normally open contact	0.0
Number of auxiliary contacts as change-over contact	0.0
Type of electrical connection of main circuit	Screw connection

CONSTRUCTION

Mounting method	Front mounting
Material housing	Plastic
Wire/conductor size, rigid cable	1.5 - 6 mm ²
Wire/conductor size, flex cable	1.5 - 4 mm ²
Degree of protection (IP), front side	IP20
Suitable for front mounting	Yes
Complete device in housing	No

MECHANICAL

With zero (off) position	Yes
Mechanical life (service cycles)	1000000.0 cycles
Number of switch positions	4.0
With retraction in 0-position	No

LE2205261

Sprecher and Schuh L2 Cam Switch Switch Body 3 Position
with Off 20A Panel Mount



DIMENSIONS

Depth	57.0 mm
Width	55.0 mm
Height	55.0 mm

ENVIRONMENT

Operating temperature	-25 - 60 °C
-----------------------	-------------