

Catalogue No: **LA 2-G-3195**

SHAFT EXTENSION STANDARD 57mm

Operator Control Devices > Pushbuttons and Control Switches > Control and Cam Switches > Sprecher + Schuh Control Switches > Accessories for Control and Cam Switches > Rotary Cam Switch - Modular Shaft Extension Component



Shaft Extension Standard 57mm



- L2 rotary cam switches are available for all control and load applications from 12 up to 25 amps in base or panel mount with renowned modular, convenience and safety features.
- A wide range of stocked configurations including control switches, motor switches, multi-position load switches, motor load disconnect switches, isolating switches and more for whatever you may need.
- Stackable wafers and multiple cam cuttings provide maximum switching options with as few as two and as many as 16 contacts.

Representative Photo Only
(actual product may vary based on configuration selections)

SPECIFICATIONS

Product Series	L2
Switching Function	Accessory

REFERENCES

IECEX Certificate	-
Supplier Declaration of Conformity:	-
Installation Guide:	-
User Manual:	-
Manufacturer Datasheet:	-
Manufacturer Catalogue & Product Selection:	-

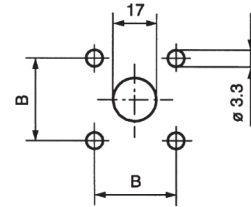
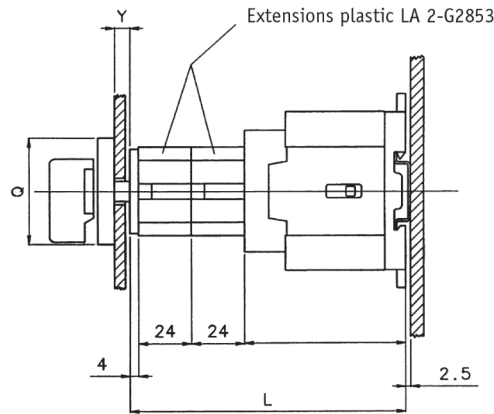
Catalogue No: LA 2-G-3195

SHAFT EXTENSION STANDARD 57mm

Operator Control Devices > Pushbuttons and Control Switches > Control and Cam Switches > Sprecher + Schuh Control Switches > Accessories for Control and Cam Switches > Rotary Cam Switch - Modular Shaft Extension Component



LA 7 - 3 pole with plastic shaft extension LA 2-G-2853 (16 .. 100 A)



Plastic shaft	Type	Y
44 mm	LA 2-G2830	2.5...9.5
52 mm	LA 2-G3194	9...18
57 mm	LA 2-G3195	14...23

No. of extensions	LA 7-25/32	LA 7-40/63	LA 7-80/100
L with 1 extension	88	102	118
L with 2 extensions	112	126	142
L with 3 extensions	136	150	166
L with 4 extensions	160	174	190
L with 5 extensions	184	198	214
L with 6 extensions	208	222	238

Type	B	Q
LFS 2-A-4	36	48 x 48
LFS 2-A-6	48	64 x 64
LFS 2-N-6	48	67 x 67
LFS 2-G-6	48	67 x 67

Dimension Diagram