



Switch Complete 1P Changeover M-O-A Mod Distribution

Safety and quality

- Switch bodies with Touch-Proof terminals (IP 20)
- IP 65 Control knobs
- Long operational life and high reliability
- Positive switching action with clearly defined switching point
- All switch bodies are manufactured from self-extinguishing materials (corresponding to class UL 94 V0)

Time Saving installation

- Captive terminal screws already open for fast installation
- Robust screwdriver guide for easy wiring using manual or power screwdriver
- Clear terminal markings prevent wiring mistakes
- Easy access to switch terminals (angled screws)
- Switch handle assemblies available with either screw fixing or central nut mounting

Representative Photo Only
(actual product may vary based on configuration selections)

SPECIFICATIONS

Product Series	L2
Un, Nominal Operational Voltage, AC	690 V AC
Ui, Rated Insulation Voltage	690 V (rms)
Uimp, Impulse Withstand Voltage	6 kV
Rated Frequency	50 / 60 Hz
Ith, Thermal Current, Open	16 A
Ithe, Thermal Current, Enclosed	12 A
Ie, Rated Operational Current, AC-1, 690V	12 A@690V
Ie, Rated Operational Current, AC-21a, 690V	12 A@690V
Ie, Rated Operational Current, AC-22a, 220-500V	12 A@220-500V
Ie, Rated Operational Current, AC-22a, 600V	12 A@600V
Ie, Rated Operational Current, AC-15, 220-240V	5 A@220-240V
Ie, Rated Operational Current, AC-15, 380-415V	3 A@380-415V
Inc, Rated Conditional Short Circuit Current	5 kA
Series Fuse Current Rating, Max	35 A
Fuse Characteristic Type(s)	gL/gG
Operational Power, AC 2, 240V AC	3 kW
Operational Power, AC 2, 380V AC	5.5 kW
Operational Power, AC 2, 415V AC	5.5 kW
Operational Power, AC 2, 440V AC	5.5 kW
Operational Power, AC 2, 500V AC	7.5 kW
Operational Power, AC 2, 660V AC	7.5 kW
Pe, Rated Operational Power, AC 3, 110V AC, 1Ø	0.75 kW@110V 1Ø
Pe, Rated Operational Power, AC 3, 220-240V AC, 1Ø	1.3 kW@220-240V 1Ø
Pe, Rated Operational Power, AC 3, 380-440V AC, 1Ø	2.2 kW@380-440V 1Ø

Catalogue No: LA 2-12-UNI-COS

SWITCH COMPLETE 1P CHANGEOVER M-O-A MOD DISTRIBUTION

Operator Control Devices > Pushbuttons and Control Switches > Control and Cam Switches > Sprecher + Schuh Control Switches > Control Switches for Modular Distribution Panel



Pe, Rated Operational Power, AC 3, 220-240V AC, 3Ø	2.2 kW@220-240V 3Ø
Pe, Rated Operational Power, AC 3, 380-440V AC, 3Ø	4 kW@380-440V 3Ø
Pe, Rated Operational Power, AC 3, 500V AC, 3Ø	5.5 kW@500V 3Ø
Pe, Rated Operational Power, AC 3, 660V AC, 3Ø	5.5 kW@660V 3Ø
Operational Power, AC 4, 220-240V AC	0.75 kW
Operational Power, AC 4, 380-415V AC	1.5 kW
Operational Power, AC 4, 440-550V AC	1.5 kW
kW Rating, AC-23a, 110V, 1ph	0.75 kW @110V
kW Rating, AC-23a, 220-240V, 1ph	1.3 kW@220-240V
kW Rating, AC-23a, 380-440V, 1ph	2.2 kW@380-440V
kW Rating, AC-23a, 220-240V, 3ph	2.2 kW@220-240V
kW Rating, AC-23a, 380-440V, 3ph	4 kW@380-440V
kW Rating, AC-23a, 500V, 3ph	5.5 kW @500V, 3ph
kW Rating, AC-23a, 660V, 3ph	5.5 kW
Ie, Rated Current, DC-21a, Resistive Load @24V per contact	12 A@24V/contact
Im, Rated Make/Break Capacity, DC-21a, Resistive@25.2V DC per contact	18 A
Ie, Rated Current, DC-21a, Resistive Load @48V per contact	10 A@48V/contact
Im, Rated Make/Break Capacity, DC-21a, Resistive@50.4V DC per contact	15 A
Ie, Rated Current, DC-21a, Resistive Load @60V per contact	8 A@60V/contact
Im, Rated Make/Break Capacity, DC-21a, Resistive@63V DC per contact	12 A
Ie, Rated Current, DC-21a, Resistive Load @110V per contact	2 A@110V/contact
Im, Rated Make/Break Capacity, DC-21a, Resistive@115.5V DC per contact	3 A
Ie, Rated Current, DC-21a, Resistive Load @220V per contact	0.5 A@220V/contact
Im, Rated Make/Break Capacity, DC-21a, Resistive@231V DC per contact	0.75 A
Ie, Rated Current, DC-21a, Resistive Load @440V per contact	0.4 A@440V/contact
Im, Rated Make/Break Capacity, DC-21a, Resistive@462V DC per contact	0.52 A
Ie, Rated Current, DC-21a, Inductive Load @24V per contact	8 A@24V/contact
Im, Rated Make/Break Capacity, DC-21a, Inductive@26.4V DC per contact	8.8 A
Ie, Rated Current, DC-21a, Inductive Load @30V per contact	4.5 A@30V/contact
Im, Rated Make/Break Capacity, DC-21a, Inductive@33V DC per contact	4.95 A
Ie, Rated Current, DC-21a, Inductive Load @48V per contact	1.5 A@48V/contact
Im, Rated Make/Break Capacity, DC-21a, Inductive@52.8V DC per contact	1.65 A
Ie, Rated Current, DC-21a, Inductive Load @60V per contact	1 A@60V/contact
Im, Rated Make/Break Capacity, DC-21a, Inductive@66V DC per contact	1.1 A
Ie, Rated Current, DC-21a, Inductive Load @110V per contact	0.4 A @110V/contact
Im, Rated Make/Break Capacity, DC-21a, Inductive@121V DC per contact	0.44 A@121V induct.
Current, Breaking Capacity, 220V AC	72 A
Power factor, breaking @ 220V AC	≥0.65

Catalogue No: LA 2-12-UNI-COS

SWITCH COMPLETE 1P CHANGEOVER M-O-A MOD DISTRIBUTION

Operator Control Devices > Pushbuttons and Control Switches > Control and Cam Switches > Sprecher + Schuh Control Switches > Control Switches for Modular Distribution Panel



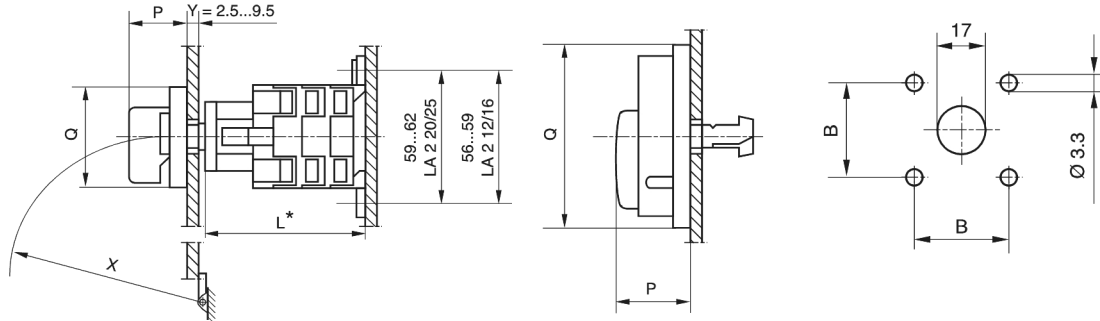
Current, Breaking Capacity, 380V AC	72 A
Power factor, breaking @ 380V AC	≥0.65
Current, Breaking Capacity, 660V AC	53 A
Power factor, breaking @ 660V AC	≥0.65
IP Rating	IP20 IP65
Wire / Conductor Size (Max)	12 AWG (3.31 mm ²)
Wire / Conductor Size, Rigid Cable, Min	18 AWG (0.823 mm ²) min
Wire / Conductor Size, Rigid Cable, Max	12 AWG (3.31 mm ²) max
Wire / Conductor Size, Flex Cable, Min	18 AWG (0.823 mm ²) min
Wire / Conductor Size, Flex Cable, Max	12 AWG (3.31 mm ²) max
Tightening Torque, Max	1 Nm
Mounting	Base Mount
Mechanical Operation Rate, Max	1200 cycles/hr
Electrical Operation Rate, Max	120 cycles/hr
Altitude, Operating, Max	2000 m
Operating Temperature, Min	-25 °C min
Operating Temperature, Max	60 °C max
Storage Temperature, Min	-40 °C min
Storage Temperature, Max	80 °C max
Standards Compliance	EN 60947-3 IEC 60529 IEC 60947 IEC 60947-3
Certifications	CE CSA UL

REFERENCES

IECEX Certificate	-
Supplier Declaration of Conformity:	-
Installation Guide:	-
User Manual:	-
Manufacturer Datasheet:	-
Manufacturer Catalogue & Product Selection:	-

LA2 Base Mount

Dimensions are in millimeters (inches). Dimensions not intended for manufacturing purposes.



Type	"Q" Dim	"P" Dim	"B" Dim
LFS2-A-4	48 X 48	28	36
LFS2-I-4	48 X 48	28	36
LFS2-S-4	48 X 62	28	36
LFS2-A-6	64 X 64	28	48
LFS2-I-6	64 X 64	28	48
LFS2-S-6	64 X 78	28	48
LFS2-N-6	67 X 67	34	48
LFS2-G-6	67 X 67	34	48

Type	"L" DIM (# of wafers)			
	1	2	3	4
LA2-12/16	58	68	78	88
LA2-20/25	59	71.5	84	96.5

* Add 2.5mm for DIN rail 46277.

Dimension Diagram