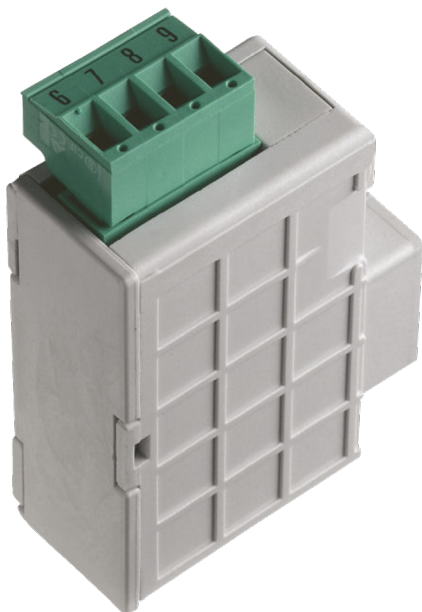


Catalogue No: **IF96005**  
**NEMO HD 2 ALARMS (SPST)**

Energy Management and Building Automation > Energy Management and Metering > Power and Multifunction Meters > IME Power and Multifunction Meters > IME Multifunction Meters > Nemo 96HD



Representative Photo Only  
(actual product may vary based on configuration selections)

Accessory NEMO 96HD Alarm Module 2 ALARMS (SPST)

- Quick and easy to install
- Compact modern design
- High accuracy monitoring and measurement to IEC 62053-21
- Easy to read and configure
- Options for remote communication

**SPECIFICATIONS**

Product Series	IF96 - NEMO MD
Component Type Metering	Interface Module
Wire / Conductor Size, Flex Cable, Max	2.4 mm <sup>2</sup> max
Wire / Conductor Size, Rigid Cable, Max	4.5 mm <sup>2</sup> max
Output alarm	2-relay, potential-free SPST
Details, Alarm	Type of alarm: min and max. Normally energised or de-energised relay. Hysteresis: 0...20%. Intervention/Reset Delay: 0...99s.
Material, Body / Housing	PC (Polycarbonate) material
Terminal Type	Screw Terminal(s)
Weight	0.04 kg
Standards Compliance	EN 61010
Certifications	CE

**REFERENCES**

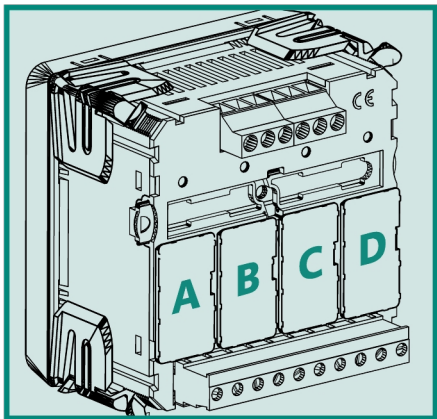
IECEX Certificate	-
Supplier Declaration of Conformity:	-
Installation Guide:	-
User Manual:	-
Manufacturer Datasheet:	-
Manufacturer Catalogue & Product Selection:	-

Catalogue No: **IF96005**  
NEMO HD 2 ALARMS (SPST)

Energy Management and Building Automation > Energy Management and Metering > Power and Multifunction Meters > IME Power and Multifunction Meters > IME Multifunction Meters > Nemo 96HD

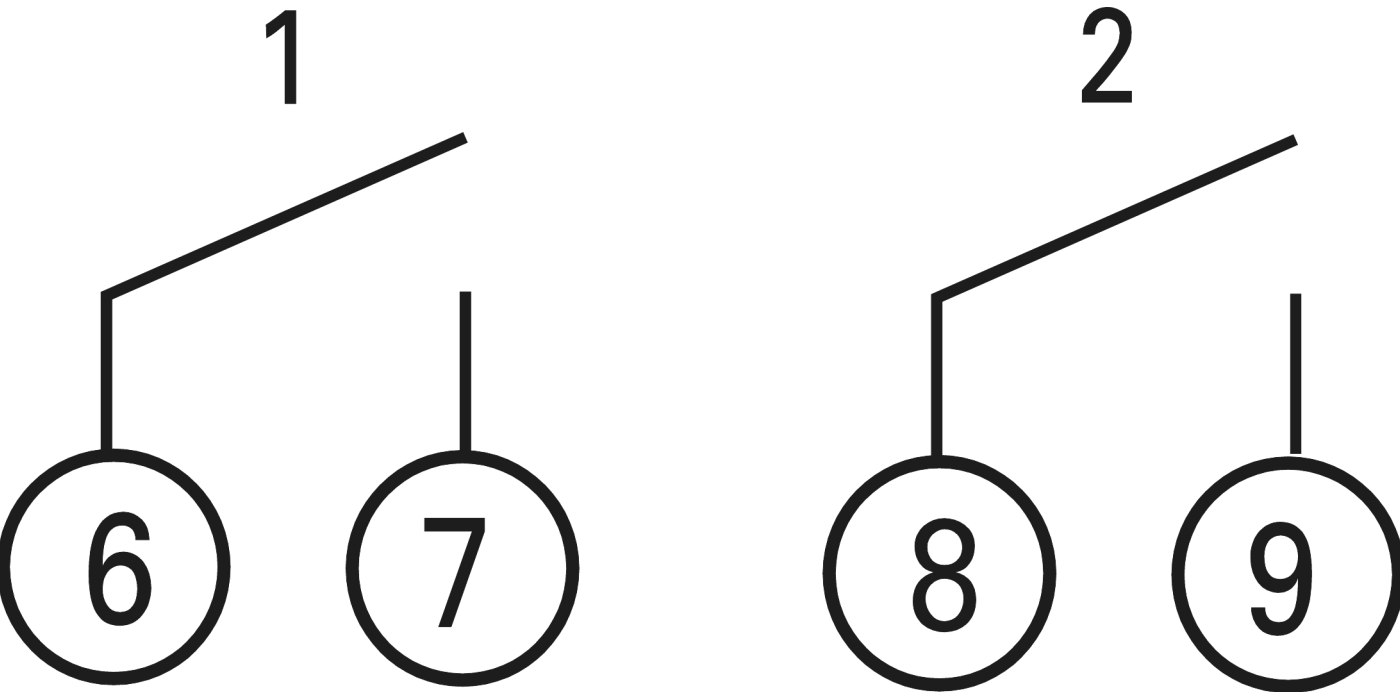


CODICE CODE	DESCRIZIONE DESCRIPTION	N. MASSIMO N. MAX.	POSIZIONE POSITION				VERSIONE' FIRMWARE'
			A	B	C	D	
IF96005	2 allarmi 2 alarms	2	•	•	•	•	V 2.20 da / from



**FIRMWARE VERSION:** on the table it is shown the firmware version of the meter which is necessary to support the function of the extra module.  
By using an IF96001 (RS485) or IF96002 (RS232) communication module it is possible to update the firmware version directly on field, with the help of a PC and the necessary software.

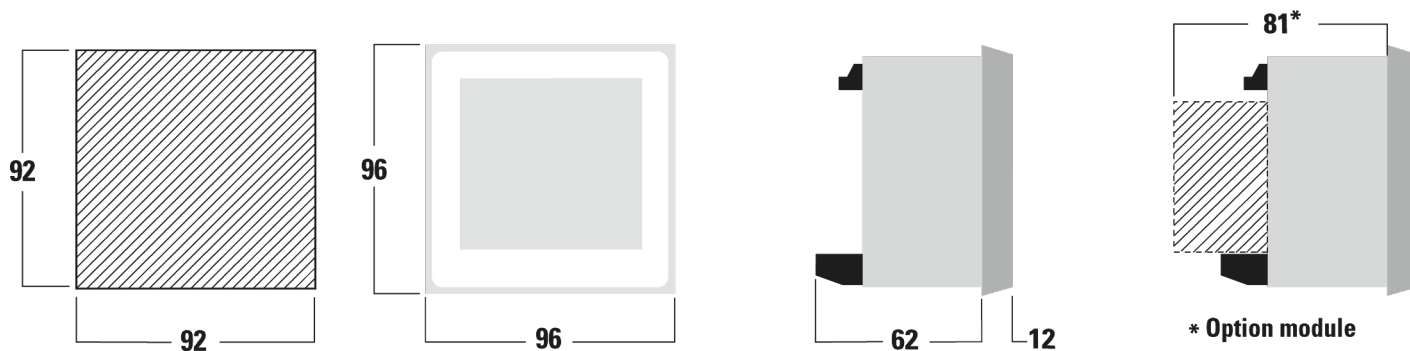
Dimension Diagram



Connection / Wiring Diagram

Catalogue No: **IF96005**  
**NEMO HD 2 ALARMS (SPST)**

Energy Management and Building Automation > Energy Management and Metering > Power and Multifunction Meters >  
IME Power and Multifunction Meters > IME Multifunction Meters > Nemo 96HD



Technical Diagram