

PIPE IDENTIFICATION



IDENTIFY PIPES EASILY

Pipe Identification allows for improved emergency response times and a professional appearance. Brady's range of Pipe Identification products are designed in accordance with AS1345-1995 and enable quick recognition of pipe contents.

Custom Pipe Markers.....	68
Self-Sticking Pipe Markers.....	69 - 71
Roll Form Pipe Markers.....	72
Pipe Banding Tapes.....	73
Nylon Ties.....	73
Metal Write-On Tags.....	73
Valve Tags.....	74

CUSTOM PIPE MARKERS

This Custom Pipe Markers Order Form is for the convenience of you and your authorised Brady Distributor. If you have questions, please contact your distributor.

1. PIPE MARKER STYLES/DETAILS

Custom Brady Snap-on Pipemarkers (CBSP)

Outside Size Diameter of Pipe	Max. Char. Per Marker	Letter Height	Colour Field Width
19mm to 35mm	25	13mm	203mm
38mm to 60mm	16	19mm	203mm
63mm to 98mm	23	32mm	305mm
101mm to 150mm	23	32mm	305mm

**Arrows are preprinted on all Snap-on markers. Min Order 5

Coiled Wrap Around Pipemarkers (CWAP)

Outside Size Diameter of Pipe	Max. Char. Per Marker	Letter Height	Style Description	Colour Field Width
13 to 38mm	22	13mm	Size 0	200mm
44 to 63mm	13	19mm	Size I	200mm
50 to 200mm	13	32mm	Size II	300mm
High Performance High Visibility (HPHV)				
200mm & above	16	88mm	Size HPHV	600mm & Two 100mm arrows

**Arrows are pre-printed on all coiled wrap around pipe markers. Min Order 5

Economy Roll Form Pipe Markers (ERF)

Outside Size Diameter of Pipe (including insulation)	Max. Char. Per Marker	Letter Height	Style Description
Over 75mm O.D.	19	30mm	LARGE 57 x 380mm
40mm - 75mm O.D.	23	20mm	SMALL 31 x 380mm

* Minimum Order of 4 rolls (50 markers per roll).



All markers except roll form pipe markers come supplied with two arrows... you cut off arrow you don't need, or apply supplementary safety marking over the arrow you don't need. Roll form pipe markers have perforated edge where you can remove and place arrow in the appropriate direction.

Self Adhesive Vinyl (SAV)

Outside Size Diameter of Pipe (including insulation)	Max. Char. Per Marker	Letter Height	Style Description
Over 250mm O.D.	20	50mm	HI-VIS 89 x 475mm
Over 75mm O.D.	19	30mm	LARGE 57 x 475mm
40mm - 75mm O.D.	23	20mm	SMALL 31 x 475mm
Less than 40mm O.D.†	20	7mm	MINI WRAP-AROUND† 10x100mm

* Min Order 1 Pack of 10

† Miniature labels are printed 13 uncut legends per 100mm x 200mm sheet and are designed to be wrapped around pipe and/or cut to length.

Colour Selection Guide

Pipeline Service	Background Colour	Legend Colour
Water - Potable	Mid-blue	White
Water	Jade Green	White
Steam	Silver-grey	Black
Oil—mineral, vegetable or animal Flammable or combustible liquids	Brown	White
Gases, either gaseous or liquefied	Sand	Black
Acids and Alkalis	Violet	White
Air	Light blue	White
Other fluids, including drainages	Black	White
Firefighting materials	Safety red	White
Electricity	Orange	White
Communications	White	Black

2. ORDER FORM

Style (see above)	Quantity (min)	Size (see chart above)	Background Colour (see colour selection guide)	Legend Colour (see colour selection guide)	Legend – see ordering information above for maximum character height (include supplementary signal/symbol only if you want it printed on the body of the marker).

3. CONTACT DETAILS

Distributor Billing Location:

Company Name: _____
 ABN: _____
 Address: _____
 City: _____ State: _____ Post Code: _____
 Purchase Order No.: _____
 Contact Name: _____
 Phone: _____ FAX: _____

Distributor Shipping Location:

Name/Title: _____
 Company Name: _____
 Address: _____
 City: _____ State: _____ Post Code: _____
 Attn: _____
 Phone: _____ FAX: _____
 Email: _____

FAX THIS FORM TO YOUR DISTRIBUTOR

SELF-STICKING VINYL PIPE MARKERS

Understanding AS 1345-1995 "Identification of the contents of pipes, conduits and ducts"

Why Mark Pipes?

Pipe markers aid in the quick identification of a pipes' contents – especially in an emergency situation. A successful pipe identification program helps employees, contractors and emergency responders to distinguish between pipes where there are several side by side. Pipe markers also save valuable time when tracing lines is necessary during maintenance.

Where Should Pipe Markers be Located?

AS 1345 specifies that markers be placed adjacent to all junctions, valves, service appliances, bulkhead and wall penetrations. Markers shall be spaced no more than 8m apart except for long, uninterrupted straight runs of external services where spacing shall not exceed 50m.

Marker Design/Layout Requirements: AS 1345 addresses several elements of pipe marker design including: Marker Layout: A marker is comprised of a printed word or words on a coloured background with a contrasting border and chevron to show direction of flow.



Marker Colours: The legend and background colours of a pipe marker are determined by the pipes contents and are specified according to the tables on this page and on pages 70-71.

Colours: Additional information about the contents of a pipe is communicated through the use of supplementary warning colours (outlined in the table on page 73). Supplementary colours are sold separately as a wrap-around "band", or can be printed on custom markers at the time of manufacture.

ALKALIS / ACIDS (WHITE ON VIOLET)					
Pipe Outside Diameter (O.D.)	Over 250mm O.D.*	Over 70mm O.D.	40mm - 70mm O.D.	Up to 40mm O.D. ▲	
Legend	Recommended SAfety Signal†	HI-VIS 89x475mm	57x475mm	31x475mm	10x100mm
ACID	██████		890001	892001	842406
ALKALI	██████		890436	860037	
ALUM SOLUTION			891823	893824	842410
CAUSTIC	██████		879016	879216	842407
CAUSTIC POTASH SOLUTION	██████		830003		
CAUSTIC SODA	██████		860101	862102	842408
CHEMICAL DOSING	██████		830004	830005	
CHLORINE			890437	860038	
CHLORINE SOLUTION			891824	893825	
CITRIC ACID			843769	830007	
CONCENTRATED CAUSTIC	██████	830011		830008	
CYANIDE SOLUTION	██████		843770	830009	842409
DETERGENT			860102	862103	842411
DILUTE ACID	██████	830012	830013	830014	842412
DILUTE CAUSTIC	██████	830024			842413
FLOCCULANT			830132	830131	842414
HYDRAZINE	██████	830025	891821	893822	
HYDROCHLORIC ACID	██████		879044	879244	842415
LIME			830026	830027	842416
PHOSPHATE			860103	862104	
PHOSPHORIC ACID	██████		890438	860039	
POLYELECTROLYTE			830029		
RECYCLED WATER			856845	856844	
SODIUM HYDROXIDE	██████		890435	860036	842417
SULPHURIC ACID	██████		879683	879283	842418
WASTE WATER			856847	856846	

AIR (WHITE ON LIGHT BLUE)					
Pipe Outside Diameter (O.D.)	Over 250mm O.D.*	Over 70mm O.D.	40mm - 70mm O.D.	Up to 40mm O.D. ▲	
Legend	Recommended SAfety Signal†	HI-VIS 89x475mm	57x475mm	31x475mm	10x100mm
AIR			890448	860049	
AIR EXTRACTION			830034	843780	
AIR SCOUR			830036	843782	
AIR VENT	██████		890449	860050	
BREATHING AIR	██████		890003	892004	
COMPRESSED AIR		830040	877275	877277	842419
DRY COMPRESSED AIR	██████		830044		842420
GENERAL PURPOSE AIR			830046		
H.P. INSTRUMENT AIR	██████	830048			842423
HIGH PRESSURE AIR			879117	879317	842422
INSTRUMENT AIR	██████	830050		892006	842424
L.P. INSTRUMENT AIR		830085			
LOW PRESSURE AIR	██████		879114	879314	842425
MALE AMENITIES EXHAUST			830114		
MEDICAL AIR		877292		877294	842426
MEDICAL BREATHING AIR					842427
MEDICAL SUCTION	██████			830148	842428

AIR (WHITE ON LIGHT BLUE)					
Pipe Outside Diameter (O.D.)	Over 250mm O.D.*	Over 70mm O.D.	40mm - 70mm O.D.	Up to 40mm O.D. ▲	
Legend	Recommended SAfety Signal†	HI-VIS 89x475mm	57x475mm	31x475mm	10x100mm
PLANT AIR	██████		890450	860051	842429
RETURN AIR			860104	862105	
SERVICE AIR	██████		879173	879373	
VACUUM		830154	860105	862106	842430
VACUUM AIR			890060	892061	
VENT		830879	830155	830156	842431

FIRE PROTECTION (WHITE ON RED)					
Pipe Outside Diameter (O.D.)	Over 250mm O.D.*	Over 70mm O.D.	40mm - 70mm O.D.	Up to 40mm O.D. ▲	
Legend	Recommended SAfety Signal†	HI-VIS 89x475mm	57x475mm	31x475mm	10x100mm
BLANK		831122	890456	860057	
CARBON DIOXIDE		830846		830523	842432
FIRE ALARM			830550	830833	
FIRE FIGHTING WATER			890455	860056	842433
FIRE FOAM			890452	860053	842434
FIRE HOSE REEL			891829	893830	842435
FIRE HYDRANT			891827	893828	
FIRE PROT. WATER				879358	
FIRE SERVICE			891828	893829	
FIRE SPRINKLERS			890453	860054	
HALON		830834	830835	830837	
HYDRANT WATER				860055	842436

ELECTRICAL (WHITE ON ORANGE)					
Pipe Outside Diameter (O.D.)	Over 250mm O.D.*	Over 70mm O.D.	40mm - 70mm O.D.	Up to 40mm O.D. ▲	
Legend	Recommended SAfety Signal†	HI-VIS 89x475mm	57x475mm	31x475mm	10x100mm
BLANK		831119		831121	
CONSUMER'S MAINS	██████			842437	
ELECTRIC TRACED	██████		831200	831201	
ELECTRICAL	██████		830052	830051	842438
EMERGENCY LIGHTING	██████	830519			842439
SUB-MAINS	██████	830520			842440
TRAFFIC CONTROLS	██████	830521			

** 10mm legend height: legend repeats 50 times on a 100 x 500mm strip.

▲ Legend repeats 13 times on a 100 x 200mm strip. Either cut off individual markers manually, or wrap entire 100 x 200mm sheet around a pipe for maximum adhesion. Each legend measures 10 x 100mm.

† Supplementary Safety markers are shown as a guide only and are not printed on markers. See page 73 for full range.

* High-Visibility markers are recommended for pipes over 250mm O.D. or whenever the pipe must be viewed from a far distance.

Pipe Size Outside Diameter (O.D.)	Pipemarker Size	Number of Pipemarkers	Price (EX GST)
Up to 40mm O.D.	10 x 100mm (13 x legend per sheet)	13/sheet - 10 sheets/pack	\$38.50
40mm - 70mm O.D.	31 x 475mm	10/pack	\$29.90
70mm + O.D.	57 x 475mm	10/pack	\$34.90
250mm + O.D.	89 x 475mm	10/pack	\$48.90
Medical Gases	10 x 100mm (50 x legend per sheet)	50/sheet - 10 sheets/pack	\$63.50

PIPE IDENTIFICATION

SELF-STICKING VINYL PIPE MARKERS



Supplementary marker bands communicate additional information... sold separately on p.73

Factory applied industrial grade adhesives simplify marker installation. Simply peel the release coated paper backing from the marker and press the marker in place. Banding each end of the marker with Arrow Tape (see page 73) is recommended to indicate contents flow direction and to secure markers to the pipe.

Self-Sticking Vinyl

A premium indoor/outdoor grade self-sticking marker product. Weather resistant inks provide 5-8 years performance.

All markers listed comply with AS 1345-1995

STANDARD PACKAGE: 1

GASES (BLACK ON SAND)

Pipe Outside Diameter (O.D.)	Over 250mm O.D.*	Over 70mm O.D.	40mm - 70mm O.D.	Up to 40mm O.D. ▲	
Legend	Recommended Safety Signal†	HI-VIS 89x475mm	57x475mm	31x475mm	10x100mm
BLANK		830842	890429	860030	
ACETYLENE		830838		860021	
AMMONIA		830840	879005	879205	
ARGON				860022	842441
CARBON DIOXIDE			879014	879214	842442
CARBON MONOXIDE			860106	862107	
EXHAUST			890423	860024	
FREON			890427	860028	
GAS			893114	893117	
GASEOUS AMMONIA		830850	891811	893812	842443
GASEOUS CHLORINE				893813	
GASEOUS NITROGEN		830852	891812	893814	842444
GASEOUS OXYGEN		830853	891817	893018	842445
HELIUM			890424	860025	842446
HYDROGEN			890036		842447
L.P. GAS			879034	879234	842452
LIQUID AMMONIA			891814	893815	842448
LIQUID CHLORINE			891815	893816	842449
LIQUID NITROGEN			879015	879215	842450
LIQUID OXYGEN					842451
MEDICAL OXYGEN			830861		842453
NATURAL GAS		830863	879036	879236	842454
NATURAL GAS Kpa			891810	893811	842455
NATURAL GAS 100 Kpa			860107	862108	
NITROGEN			860127	862128	
NITROUS OXIDE		830864	890425	860026	842456
OXYGEN			879071	893151	
PROPANE GAS			890426	860027	
RECIRCULATING GAS			830866	830867	
REFRIGERANT		830868	890428	860029	842457
SLUDGE GAS			830875		
VENT			830880	830881	

MISCELLANEOUS (WHITE ON BLACK)

Pipe Outside Diameter (O.D.)	Over 250mm O.D.*	Over 70mm O.D.	40mm - 70mm O.D.	Up to 40mm O.D. ▲	
Legend	Recommended Safety Signal†	HI-VIS 89x475mm	57x475mm	31x475mm	10x100mm
DIGESTED SLUDGE			830891	843773	
RECLAIMED EFFLUENT			830904	830453	
SEWAGE			860126	862127	
SEWERAGE			891818	893819	
SLUDGE			879660	876674	
SLUDGE TRANSFER			830908	830909	
SLURRY			834663	843776	
SOIL			890430	860031	
SOIL VENT			890431	860032	
SUPERNATANT			891819	893820	
THICKENED SLUDGE			830913		
TRADE WASTE			860100	862101	
VENT			893193	893196	
WASTE			879634	879734	
WASTE ACTIVATED			830914		

OILS (WHITE ON BROWN)

Pipe Outside Diameter (O.D.)	Over 250mm O.D.*	Over 70mm O.D.	40mm - 70mm O.D.	Up to 40mm O.D. ▲	
Legend	Recommended Safety Signal†	HI-VIS 89x475mm	57x475mm	31x475mm	10x100mm
BLANK				860048	
ALCOHOL			890007	892008	
DIESEL FUEL			830917	843778	
DIESEL OIL			879352	879932	
ENGINE OIL			830919	830920	
FUEL OIL			879059	879259	
FUEL OIL SUPPLY			877543	877545	
GOVERNOR OIL				830922	
GREASE			890446	860047	
HOT OIL			890443	860044	842474
HYDRAULIC FLUID			830923	830924	
HYDRAULIC OIL			891830	893831	
INHIBITED KEROSENE			830925	830926	
INSUL OIL CLEAN			891825		
LUBRICATING OIL			830134	830133	842475
OIL			890442	860043	
WASTE OIL			830650	830649	
WHITE SPIRIT			860109	862110	

MISCELLANEOUS (WHITE ON BLACK)

Pipe Outside Diameter (O.D.)	Over 250mm O.D.*	Over 70mm O.D.	40mm - 70mm O.D.	Up to 40mm O.D. ▲	
Legend	Recommended Safety Signal†	HI-VIS 89x475mm	57x475mm	31x475mm	10x100mm
BEER				830886	
BILGE				830889	
BRINE			860110	862111	
DIGESTED SLUDGE			830891	843773	
DRAIN			879369	893101	842460
EFFLUENT			860111	862112	
LAB WASTE			890432	860033	
PRODUCT				830895	
PUMPED DRAINAGE			830897		
RADIOACTIVE WASTE				830898	842461
RAW GREEN LIQUOR			830899		
RECIRCULATED SLUDGE			830903		

▲ Legend repeats 13 times on a 100 x 200mm strip. Either cut off individual markers manually, or wrap entire 100 x 200mm sheet around a pipe for maximum adhesion. Each legend measures 10 x 100mm.

† Supplementary Safety markers are shown as a guide only and are not printed on markers.

See page 73 for full range.

* High-Visibility markers are recommended for pipes over 250mm O.D. or whenever the pipe must be viewed from a far distance.



For larger jobs see our roll form pipe markers on page 72

STEAM (BLACK ON SILVER-GREY)

Pipe Outside Diameter (O.D.)	Over 250mm O.D.*	Over 70mm O.D.	40mm - 70mm O.D.	Up to 40mm O.D. ▲	
Legend	Recommended Safety Signal†	HI-VIS 89x475mm	57x475mm	31x475mm	
BLANK			890434	860035	
BLOW DOWN			890012	892013	
BOILER FEED			890015	892016	
EXHAUST			879561	836248	
H.P. STEAM			890052	892053	842470
L.P. STEAM			890053	892054	842471
MAIN STEAM				830946	842472
SATURATED STEAM			860113	862114	
SEALING STEAM			830947	843783	
STEAM		830948	890050	892051	842473
STEAM CONDENSATE			860114	862115	
STEAM DRAIN		830949	891820	893821	
STEAM 920 Kpa			830951		
STEAM 2900 Kpa			830952		

WATER (WHITE ON MID BLUE)

Pipe Outside Diameter (O.D.)	Over 250mm O.D.*	Over 70mm O.D.	40mm - 70mm O.D.	Up to 40mm O.D. ▲
Legend	Recommended Safety Signal†	HI-VIS 89x475mm	57x475mm	31x475mm
POTABLE WATER**			890400	860001

** NOTE: As per AS 1345, Potable Water should be a green marker with blue supplementary colour band. Blue marker is offered due to popular demand.



For pricing see page 69

WATER (WHITE ON JADE GREEN)

Pipe Outside Diameter (O.D.)	Over 250mm O.D.*	Over 70mm O.D.	40mm - 70mm O.D.	Up to 40mm O.D. ▲	
Legend	Recommended Safety Signal†	HI-VIS 89x475mm	57x475mm	31x475mm	
BLANK			876340	876336	
ASH SLUICE WATER			830955		
AUXILIARY COOLING WATER		830956	830958		
BACKWASH		830957	830959		
BOILER FEED WATER		879525	879527		
BORE WATER		830130	830129		
BRINE		860116	862117		
CHILLED DRINKING WATER			830964		
CHILLED WATER		879353	876998	842476	
CIRCULATING WATER		830966	879130	879330	
COLD WATER		830967	890067	892068	842477
COLD WATER FLOW			860131	862132	
COLD WATER RETURN			860130	862131	
CONDENSATE		830968	879094	879294	842478
CONDENSER WATER			879082	876671	842479
COOLING WATER			879148	879348	842480
DE-IONIZED WATER			830054	830053	
DEMINERALISED WATER		830973	891808	893809	842481
DISTILLED WATER		830974	830975	830976	
DOM. COLD WATER			860117	862118	
DOM. HOT WATER			890072	892073	842482
DOMESTIC WATER			891809	883810	842483

WATER (WHITE ON JADE GREEN)

Pipe Outside Diameter (O.D.)	Over 250mm O.D.*	Over 70mm O.D.	40mm - 70mm O.D.	Up to 40mm O.D. ▲	
Legend	Recommended Safety Signal†	HI-VIS 89x475mm	57x475mm	31x475mm	
DRAIN WATER		830977	830978	830979	842485
DRINKING WATER			860118	862119	
EFFLUENT			830981	830982	842486
FEED WATER			830983	843779	
FILTERED WATER		830984	890074	892075	842487
FRESH WATER		830992	830993	830994	842488
HEATING/COOLING WATER		830997	830998	830999	
HEATING HOT WATER			891805	893806	842489
HIGH PRESSURE HOT WATER		831023	831024	831028	842490
HIGH TEMPERATURE HOT WATER			890076	892077	842491
HOT ABLUTION WATER			831029		
HOT WATER		831030	890077	892078	842492
HOT WATER FLOW			860129	862130	
HOT WATER RETURN			860128	862129	
JACKET WATER			831031		
LOW TEMP. HOT WATER		831033	891806	893807	
MAINS WATER			838576	838575	842493
MAKE UP WATER		831034	831035	831036	
NON POTABLE WATER		831037	879028	879228	842494
OVERFLOW			830055	830056	842495
POLLUTED WATER		831053	890401	860002	
POTABLE WATER		831202	831203	831204	842496
PROCESS WATER			860120	862121	
PURIFIED WATER			860121	862122	
RAIN WATER			860122	862123	
RAW WATER			879140	879340	842497
RETURN			890402	860003	851758
SALT WATER			860123	862124	
SAMPLE WATER				830656	
SCUPPERS				831054	
SOFT WATER			860124	862125	
SOLAR HOT WATER				831057	
STORMWATER			879874	879876	
SUMP WATER			831059	831060	
SUPPLY			890403	860004	
TOWNS MAIN WATER		831061		831063	
TOWNS WATER			891807	893808	
TREATED WATER			860125	862126	842498
WARM WATER			831066	831067	
WASTE WATER			831068	831069	
WATER			876661	893205	

MEDICAL GASES (COLOURS SPECIFIED BELOW)

MEDICAL BREATHING AIR			860500**	WHITE ON BLACK
MEDICAL NITROUS OXIDE			860501**	WHITE ON BLUE
MEDICAL OXYGEN		830521	860502**	BLACK ON WHITE
MEDICAL SUCTION			860503**	BLACK ON PRIMROSE
MEDICAL VACUUM			860504**	BLACK ON PRIMROSE
SPARE MEDICAL GAS			830883**	BLACK ON BISCUIT

COMMUNICATIONS (BLACK ON WHITE)

BLANK	831116	831117	831118	
DATA TRANSFER			830160	
TELEPHONES	830489		830513	



All markers listed comply with AS1345-1995 identification of the contents of pipes, conduits and ducts.

ROLL FORM PIPE MARKERS

Roll Form Pipe Markers provide an economical solution for any pipe marking application. Printed on self-adhesive polypropylene, these economical markers are suitable for larger marking jobs on clean pipes. Markers come on a roll, paper backed and with perforated edges for easy flow indication.

Available in a select range of pipe marker legends, and as custom.

STANDARD PACKAGE:

Roll of 50 Markers and 50 Chevrons (flow indicators).
Roll length 19m (approx).

Pipe Size Outside Diameter	Pipemarker Size (HxW)	Price (EX GST)
40mm to 70mm	31 x 380mm	\$91.50



For supplementary
safety markers,
see page 73



All wordings/colour combinations listed are "Standard" markers and conform to Australian Standards

ALKALIS / ACIDS (WHITE ON VIOLET)		
Pipe Outside Diameter (O.D.) 40mm to 70mm O.D.		
Legend	Recommended Safety Signal†	380mm x 31mm
Caustic Soda		846907

AIR (WHITE ON LIGHT BLUE)		
Pipe Outside Diameter (O.D.) 40mm to 70mm O.D.		
Legend	Recommended Safety Signal†	380mm x 31mm
Air		846909
Compressed Air		846911
High Pressure Air		846910
Instrument Air		846912

WATER (WHITE ON MID BLUE)		
Pipe Outside Diameter (O.D.) 40mm to 70mm O.D.		
Legend	Recommended Safety Signal†	380mm x 31mm
Potable Water**		846939

** NOTE: As per AS 1345, Potable Water should be a green marker with blue supplementary colour band. Blue marker is offered due to popular demand.

WATER (WHITE ON JADE GREEN)		
Pipe Outside Diameter (O.D.) 40mm to 70mm O.D.		
Legend	Recommended Safety Signal†	380mm x 31mm
Chilled Water		846913
Cold Water		846914
Condenser Water		846915
Cooling Water		846916
Drain Water		846917
Heating Hot Water		846918
Hot Water		846919
Non Potable Water		846920
Potable Water		846921
Process Water		846922
Rain Water		846923
Raw Water		846924
Towns Water		846925
Water		846926

OILS (WHITE ON BROWN)		
Pipe Outside Diameter (O.D.) 40mm to 70mm O.D.		
Legend	Recommended Safety Signal†	380mm x 31mm
Fuel Oil		846937
Hydraulic Oil		846938

ELECTRICAL (WHITE ON ORANGE)		
Legend	Recommended Safety Signal†	380mm x 31mm
Electrical		846936

GASES (BLACK ON SAND)		
Pipe Outside Diameter (O.D.) 40mm to 70mm O.D.		
Legend	Recommended Safety Signal†	380mm x 31mm
Amonia		848342
L.P. Gas		846927
Natural Gas		846928
Natural Gas Kpa		846929
Nitrogen		846930
Oxygen		846931

STEAM (BLACK ON SILVER-GREY)		
Pipe Outside Diameter (O.D.) 40mm to 70mm O.D.		
Legend	Recommended Safety Signal†	380mm x 31mm
Steam		846933
Steam Condensate		846934

FIRE PROTECTION (WHITE ON RED)		
Pipe Outside Diameter (O.D.) 40mm to 70mm O.D.		
Legend	Recommended Safety Signal†	380mm x 31mm
Fire Fighting Water		846935

** 10mm legend height: legend repeats 50 times on a 100 x 500mm strip. Legend repeats 13 times on a 100 x 200mm strip. Either cut off individual markers manually, or wrap entire 100 x 200mm sheet around a pipe for maximum adhesion. Each legend measures 10 x 100mm.

† Supplementary Safety markers are shown as a guide only and are not printed on markers. See page 73 for full range.

* High-Visibility markers are recommended for pipes over 250mm O.D. or whenever the pipe must be viewed from a far distance.



All wording/colour combinations listed are standard markers and comply to Australian Standards AS1345-1995 & AS2700-1996

SUPPLEMENTARY MARKERS

These supplementary safety markers are designed to communicate additional information about the contents of a pipe. Where marking pipes or ducts that contain materials for human consumption or wherever a special hazard to operators may be present, supplementary marking may be required to comply to AS1345-1995, Clause 8.1 and/or 8.2. Supplementary markers produced in "Bands", simply wrap around the pipe to provide 360° visibility of the signal colours. Alternatively, cut the band to your own length and get multiple "marks" from a single band. Made from self-adhesive outdoor vinyl.

Materials For Human Consumption

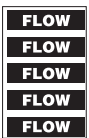


75x800mm
833430
25x200mm
833428

Hazardous Materials



75x800mm
833378
25x200mm
833376



75x800mm
833381
25x200mm
833379



75x800mm
833384
25x200mm
833382

Radioactive Hazard



75x800mm
833387
25x200mm
833385

Biological Hazard



75x800mm
833390
25x200mm
833388

Fire Protection Material



75x800mm
833427
25x200mm
833391

STANDARD PACKAGE: 1

Size	Qty	Mat'l	Price (EX GST)
25x200mm	10	SS	\$27.90
75x800mm	10	SS	\$94.50

PIPE BANDING TAPES

Roll Calculation Guide

Pipe Diameter	Colour Bands Per Roll
25mm	260
50mm	150
75mm	100
100mm	80
125mm	60
150mm	50
175mm	40
200mm	35
225mm	30
250mm	30

Pipe Banding Tape (B-946)

Solid colour. Ideal companion to your pipe markers.

Arrow Tape (B-946)

Specially formulated to withstand the elements. Use outdoors or indoors with vinyl pipe markers.

Solid colour or arrow pipe banding tape provides 360° pipe colour code visibility, improving operational safety and plant efficiency.

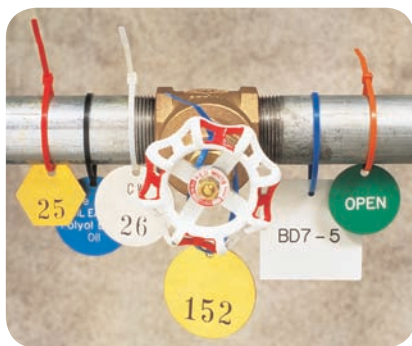


STANDARD PACKAGE: 1

Roll Size	Part No.											Price (EX GST)
	Yellow	Green	Red	Blue	Orange	White	Brown	Black	Grey	Purple	Clear	
25mm x 27m	36301	36304	36302	36303	91428	91429	36305	36306	36307	36308	36309	\$31.50
50mm x 27m	55260	55263	55261	55262	91430	91431	36310	36311	36312	36313	36314	\$47.50
100mm x 27m	36287	36290	36288	36289	91432	91433	36315	36316	36317	36318	36319	\$83.90

Roll Size	Part No.							Price (EX GST)
	Black/Yellow	White/Green	White/Red	White/Blue	Black/White	Black/Orange	Black/Grey	
25mm x 27m	91424	91425	91426	91427	91413	91414	91415	\$31.50
50mm x 27m	91420	91421	91422	91423	91417	91418	91419	\$47.50
100mm x 27m	91287	91290	91288	91289	91409	91410	91411	\$83.90

NYLON TIES



Easy fastening without any tools!

One piece nylon tie provides easy fastening of valve tags without tools. 200mm in length and ties can be hooked together if longer lengths are required. Non-Corrosive 100% nylon operating temperatures from -40°C to +85°C.

STANDARD PACKAGE: 100 identical ties

Part No.	Colour	Price (EX GST)
43356	Black	\$18.90
43357	Blue	\$18.90
43358	Green	\$18.90
43360	Orange	\$18.90
43361	Purple	\$18.90
43362	Red	\$18.90
43363	Yellow	\$18.90
43359	Natural	\$18.90



METAL WRITE-ON TAGS

Available in a variety of colours to help classify and identify. Write your own wordings using most marking pens. The durable metal can be bent and straightened without cracking. Tags are 76 x 127mm with a 6mm hole. Fix with nylon ties.

STANDARD PACKAGE: 1

Part No.	Colour	Price (EX GST)
848778	Yellow	\$1.60
848777	White	\$1.60
848809	Green	\$1.60
848780	Blue	\$1.60
848779	Red	\$1.60
852335	Grey	\$1.60
848808	Orange	\$1.60



BLANK METAL VALVE TAGS



Available in Brass, Stainless Steel and Aluminium. Blank for self-engraving/stamping.

STANDARD PACKAGE: 25 TAGS

Part No.	Size	Material	Shape	Price (EX GST)
23210	38mm	Brass	Round	\$29.90
23212	38mm	Brass	Square	\$29.90
23211	51mm	Brass	Round	\$34.50
23213	51mm	Brass	Square	\$34.50
44400	38mm	Stainless Steel	Round	\$31.50
44401	38mm	Stainless Steel	Square	\$31.50
44402	51mm	Stainless Steel	Round	\$36.90
44403	51mm	Stainless Steel	Square	\$36.90
848686	38mm	Aluminium	Round	\$31.50
861758	38mm	Aluminium	Square	\$31.50
861759	51mm	Aluminium	Round	\$36.90
848738	51mm	Aluminium	Square	\$36.90
860314	114mm	Brass	Bead Chain	\$31.50 (pk/100)
849049	114mm	Nickel	Bead Chain	\$31.50 (pk/100)

B



BLANK PLASTIC VALVE TAGS

Easy to write on vinyl. Rectangular tags measure 65 x 90mm. Round tags are 75mm in diameter.

STANDARD PACKAGE: 25 TAGS

Colour	Part No.	Description	Part No.	Description	Price (EX GST)
Red	46977	Rectangular Tag	46981	Round Tag	\$22.90
Yellow	46978	Rectangular Tag	46982	Round Tag	\$22.90
Green	46976	Rectangular Tag	46984	Round Tag	\$22.90
White	46980	Rectangular Tag	46986	Round Tag	\$22.90
Blue	46975	Rectangular Tag	46983	Round Tag	\$22.90
Orange	46979	Rectangular Tag	46985	Round Tag	\$22.90

B



CUSTOM VALVE TAGS



Engraved Brass



Engraved Stainless Steel

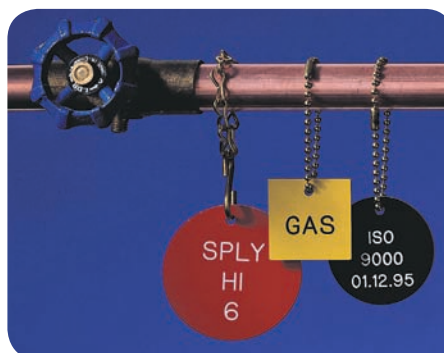
Brass, Aluminium and Stainless Steel Tags are custom engraved to your specifications. Aluminium and Brass Tags can be colour-filled if desired (Black, Blue, Red or White). Aluminium Tags are also available in colour-coded anodised, custom laser-etched for enhanced visibility.

All tags are available in 38mm and 51mm, Round and Square. Colour-coded Aluminium Tags are available in Black, Dark Blue, Green, Gold, Light Blue, Olive, Orange, Pink, Red, Violet and Yellow, with contrasting wording.

Our custom Plastic Tags are engraved on a flexible, stain-resistant multi-layered acrylic material. The tags are durable and long-lasting. 7 colours available Black, Blue, Brown, Green, Red, White and Yellow (Note: Yellow and White tags come stock with Black text).



Laser Etched Anodised Aluminium (coloured)



Engraved Acrylic (coloured)

Tag Size	Type	Max No. Characters/Line
38mm	Round	8
38mm	Square	12
51mm	Round	10
51mm	Square	16

Tag Material	Temperature Limit
Laser-Etched Coloured Aluminium (Anodised)	120°C
Engraved Brass	650°C
Engraved Aluminium (non-coloured)	815°C
Engraved Stainless Steel	1480°C
Engraved Acrylic	66°C