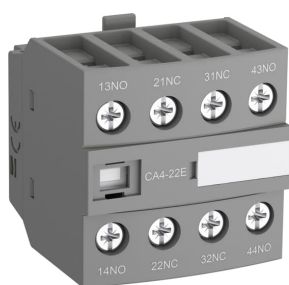


PRODUCT-DETAILS

# CA4-22M

## CA4-22M Auxiliary Contact Block



### General Information

Extended Product Type	CA4-22M
Product ID	1SBN010140R1122
EAN	3471523130166
Catalog Description	CA4-22M Auxiliary Contact Block

Long Description	<p>The auxiliary contact blocks are used for the operation of auxiliary circuits and control circuits for standard industrial environments.</p> <p>Types of auxiliary contact blocks for front mounting:</p> <ul style="list-style-type: none"> <li>• CA4 1 or 4-pole block, with instantaneous N.O., N.C. contacts</li> <li>• CC4 1-pole block, with N.O. leading contact or N.C. lagging contact</li> <li>• CAT4 2-pole block, with instantaneous N.O. + N.C. contacts and A1 / A2 coil terminal connection on front face.</li> </ul> <p>Select the 4-pole auxiliary contact blocks CA4-..E, CA4-..M, CA4-..U or CA4-..N type, according to the contactor or contactor relay type for compliance with the standard requirements (see "Terminal marking and positioning").</p> <p>Types of auxiliary contact blocks for side mounting:</p> <ul style="list-style-type: none"> <li>• CAL4 2-pole block, with instantaneous N.O. + N.C. contacts.</li> </ul> <p>For clipping onto the right- and/or left-hand side of the contactors. The auxiliary contact blocks are equipped with screw type connecting terminals delivered open, protected against accidental direct contact and bear the corresponding function marking.</p>
------------------	--

### Technical

Suitable For	AF09 AF09Z AF12 AF12Z AF16 AF16Z AFC09 AFC12 AFC16
--------------	--

AF09B  
 AF09ZB  
 AF12B  
 AF12ZB  
 AF16B  
 AF16ZB

Rated Operational Voltage	Auxiliary Circuit 690 V
Rated Insulation Voltage (U <sub>i</sub> )	acc. to IEC 60947-5-1 and VDE 0110 (Gr. C) 690 V acc. to UL/CSA 600 V
Rated Impulse Withstand Voltage (U <sub>imp</sub> )	6 kV
Rated Operational Current AC-15 (I <sub>a</sub> )	(500 V) 2 A (690 V) 2 A (24 / 127 V) 6 A (220 / 240 V) 4 A (400 / 440 V) 3 A
Rated Short-time Withstand Current Low Voltage (I <sub>cw</sub> )	for 0.1 s 140 A for 1 s 100 A
Rated Frequency (f)	Auxiliary Circuit 50 / 60 Hz
Number of Auxiliary Contacts NC	2
Number of Auxiliary Contacts NO	2
Low Coil Consumption	No
Tightening Torque	Auxiliary Circuit 1.2 N·m
Mounted Auxiliary Contacts	2 NO, 2 NC
Mounting Type	Front mounting
Wire Stripping Length	Auxiliary Circuit 10 mm
Terminal Type	Screw Terminals

## Environmental

Degree of Protection	acc. to IEC 60529, IEC 60947-1, EN 60529 Auxiliary Terminals IP20
RoHS Status	Following EU Directive 2011/65/EU
Environmental Information	1SBD250143E1000

## Technical UL/CSA

Tightening Torque UL/CSA	Auxiliary Circuit 11 in·lb
Pilot Duty UL/CSA	A600 Q600

## Dimensions

Product Net Width	43 mm
Product Net Height	43 mm
Product Net Depth / Length	39.5 mm
Product Net Weight	0.055 kg

## Container Information

Package Level 1 Units	box 1 piece
Package Level 1 Width	46 mm
Package Level 1 Height	46 mm

Package Level 1 Depth / Length	46 mm
Package Level 1 Gross Weight	0.055 kg
Package Level 1 EAN	3471523130166
Package Level 2 Units	box 192 piece
Package Level 2 Gross Weight	10.56 kg
Package Level 3 Units	4608 piece

## Ordering

Minimum Order Quantity	1 piece
Customs Tariff Number	85389099
E-Number (Finland)	3706515
E-Number (Sweden)	3211420

## Certificates and Declarations (Document Number)

ABS Certificate	ABS_20-2060694-PDA
BV Certificate	BV_2634H24900B0
CB Certificate	CB_SE-93053
CQC Certificate	CQC2011010304496319 CQC2013010304651497
cUL Certificate	UL_20180227_E252354_3_1
Declaration of Conformity - CCC	2020980304001258 2020980304001259
Declaration of Conformity - CE	1SBD250007U1000
Declaration of Conformity - UKCA	1SBD250038U1000
DNV Certificate	DNV-GL_TAE00001BV-3
DNV GL Certificate	DNV-GL_TAE00001BV-3
EAC Certificate	EAC_RU C-FR ME77 B03391
Environmental Information	1SBD250143E1000
GL Certificate	DNV-GL_TAE00001BV-3
GOST Certificate	GOST_POCCFR.ME77.B07175.pdf
Instructions and Manuals	1SBC101041M6801
LR Certificate	LRS_1300087E1
RINA Certificate	RINA_ELE084013XG
RMRS Certificate	RMRS_1802703280
RoHS Information	1SBD250007U1000
UL Certificate	UL_20091128-E252354-3-1
UL Listing Card	UL_E252354

## Popular Downloads

Instructions and Manuals	1SBC101041M6801
UL Listing Card	UL_E252354

## Classifications

ETIM 7	EC000041 - Auxiliary contact block
ETIM 8	EC000041 - Auxiliary contact block

WEEE Category	5. Small Equipment (No External Dimension More Than 50 cm)
WEEE B2C / B2B	Business To Business
CN8	8538 90 99
UNSPSC	39121500
eClass	V11.0 : 27371302
Object Classification Code	K

---

## Categories

---

Low Voltage Products and Systems → Control Products → Contactors → Block Contactors Accessories

