

## AF CONTACTORS

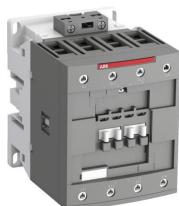
### 4 TO 200kW

#### Features:

- 4 Pole.
- Add-on auxiliary contact.
- Built-in surge suppression.
- Reduced panel energy consumption.
- Very distinct closing and opening.
- Can withstand short voltage dips and voltage sags.
- DIN or Panel mounting. AF09...AF80.
- For connection with built-in cable clamps AF116...AF140.
- Panel mounting. AF116...AF370



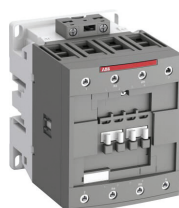
AF094000...



AF804000...



AF092200...



AF802200...

### 4 POLE - 4NO CONTACTORS

415V AC-3 (kW)	415V AC-3 (A)	AC-1 (A)	Auxiliary		Part No.
			NO	NC	
<b>DIN or Panel Mount</b>					
4	9	25	0	0	AF094000 <input type="checkbox"/> <sup>1)</sup>
7.5	18	30	0	0	AF164000 <input type="checkbox"/> <sup>1)</sup>
11	21.2	45	0	0	AF264000 <input type="checkbox"/> <sup>1)</sup>
11	21.2	55	0	0	AF384000 <input type="checkbox"/> <sup>1)</sup>
18.5	40	70	0	0	AF404000 <input type="checkbox"/> <sup>1)</sup>
22	53	100	0	0	AF524000 <input type="checkbox"/> <sup>1)</sup>
37	80	125	0	0	AF804000 <input type="checkbox"/> <sup>1)</sup>
<b>Panel Mount</b>					
55	116	160	0	0	AF1164000 <input type="checkbox"/>
75	140	200	0	0	AF1404000 <input type="checkbox"/>
90	190	275	0	0	AF1904000 <input type="checkbox"/>
110	205	350	0	0	AF2054000 <input type="checkbox"/>
132	265	400	0	0	AF2654000 <input type="checkbox"/>
160	305	500	0	0	AF3054000 <input type="checkbox"/>
200	370	525	0	0	AF3704000 <input type="checkbox"/>

To complete Part Number, add the required voltage code:

Code	11	13	14
Control Voltages	24...60V AC / 20...60V DC	100...250V AC/DC	250...500V AC/DC

1) 11 (24..60V AC/20..60V DC) arrangement not suitable for direct control by PLC-output.

- Other coil voltages and auxiliary contact arrangements available.
- For B version (bar connections) order standard version and remove terminals.

### 4 POLE - 2NO/2NC CONTACTORS

415V AC-3 (kW)	415V AC-3 (A)	AC-1 (A)	Auxiliary		Part No.
			NO	NC	
4	9	25	0	0	AF092200 <input type="checkbox"/> <sup>1)</sup>
7.5	18	30	0	0	AF162200 <input type="checkbox"/> <sup>1)</sup>
11	21.2	45	0	0	AF262200 <input type="checkbox"/> <sup>1)</sup>
11	21.2	55	0	0	AF382200 <input type="checkbox"/> <sup>1)</sup>
18.5	40	70	0	0	AF402200 <input type="checkbox"/> <sup>1)</sup>
37	80	125	0	0	AF802200 <input type="checkbox"/> <sup>1)</sup>

To complete Part Number, add the required voltage code:

Code	11	13	14
Control Voltages	24...60V AC / 20...60V DC	100...250V AC/DC	250...500V AC/DC

1) 11(24..60VAC/20..60VDC) not suitable for direct control by PLC-output.

- Other coil voltages and auxiliary contact arrangements available.