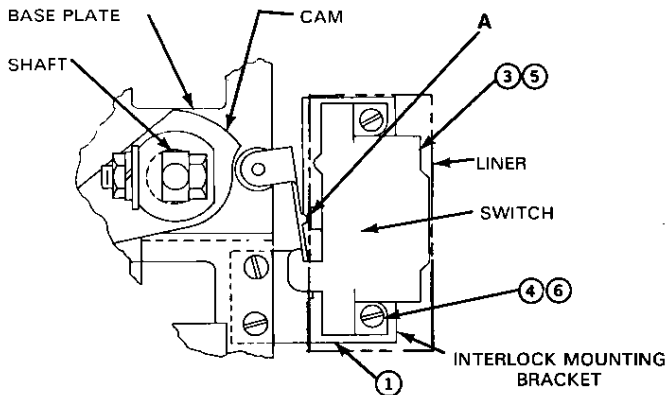


## CLASS 9999, TYPES R-47 AND R-48 ELECTRICAL INTERLOCKS

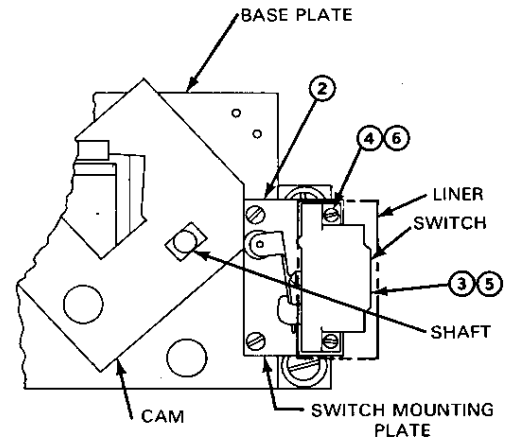
Instruction Sheet  
30072-313-51A  
FEBRUARY 1985

For Use With Class 9421 Type L Door Mounted Circuit Breaker Operating Mechanisms

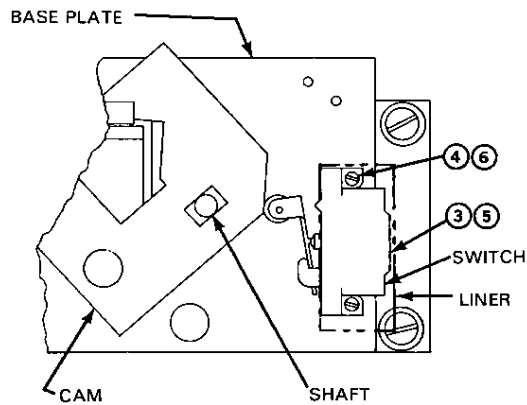
**DANGER** HAZARD OF ELECTRICAL SHOCK OR BURN. TURN OFF POWER SUPPLYING THIS EQUIPMENT BEFORE INSTALLING OR SERVICING.



**FIGURE 1**  
LN-1, LP-1, LP-2, LF-1, LK-1, LQ-1  
ELECTRICAL INTERLOCK LOCATION



**FIGURE 2**  
LR-1, LL-1  
ELECTRICAL INTERLOCK LOCATION



**FIGURE 3**  
LT-1, LM-1  
ELECTRICAL INTERLOCK LOCATION

### INSTALLATION AND ADJUSTMENT (FIG. 1)

1. DISCONNECT ALL POWER TO CIRCUIT BREAKER.
2. SWITCH CIRCUIT BREAKER TO ON POSITION.
3. PLACE SHORT EDGE OF INTERLOCK MOUNTING BRACKET AGAINST BASE PLATE AS SHOWN (FIG. 1). SECURE WITH (2) #6-32 SCREWS (ITEM 4). DO NOT TIGHTEN SCREWS.
4. MOUNT LINER AND INTERLOCK TO INTERLOCK MOUNTING BRACKET USING (2) #6-32 SCREWS. SECURE LINER AROUND INTERLOCK.
5. ADJUST INTERLOCK MOUNTING BRACKET SO THAT INTERLOCK IS ENGAGED AT POINT A (FIG. 1). TIGHTEN SCREWS.

6. TURN CIRCUIT BREAKER TO OFF AND ON POSITIONS SO THAT INTERLOCK TURNS OFF AND ON WITH AUDIBLE SNAP.
7. FURTHER ADJUSTMENT MAY BE REQUIRED.
8. RETURN BREAKER TO OFF POSITION AND RECONNECT POWER.

**INSTALLATION AND ADJUSTMENT (FIG. 2)**

1. DISCONNECT ALL POWER TO CIRCUIT BREAKER.
2. SWITCH CIRCUIT BREAKER TO ON POSITION.
3. PLACE SWITCH MOUNT ON OPERATOR LEVER SUPPORT, AS SHOWN. SECURE WITH (2) #6-32 SCREWS.
4. MOUNT LINER AND INTERLOCK TO SWITCH MOUNT USING (2) #6-32 SCREWS. SECURE LINER AROUND INTERLOCK.
5. TURN CIRCUIT BREAKER TO OFF AND ON POSITIONS SO THAT INTERLOCK TURNS OFF AND ON WITH AN AUDIBLE SNAP.
6. RETURN BREAKER TO OFF POSITION AND RECONNECT POWER.

**INSTALLATION AND ADJUSTMENT (FIG. 3)**

1. DISCONNECT ALL POWER TO CIRCUIT BREAKER.
2. SWITCH CIRCUIT BREAKER TO ON POSITION.
3. MOUNT LINER AND INTERLOCK TO OPERATOR LEVER SUPPORT AS SHOWN USING (2) #6-32 SCREWS. SECURE LINER AROUND INTERLOCK.
4. TURN CIRCUIT BREAKER TO OFF AND ON POSITIONS SO THAT INTERLOCK TURNS OFF AND ON WITH AN AUDIBLE SNAP.
5. RETURN BREAKER TO OFF POSITION AND RECONNECT POWER.

**PARTS LIST**

ITEM	DESCRIPTION	PART NO.	QUANTITY	
			R-47	R-48
1	INTERLOCK MOUNTING BRACKET	A50002-038-01	1	1
2	SWITCH MOUNTING PLATE	A50002-041-01	1	1
3	SWITCH	9007AB23	1	
3	SWITCH	9007CB33		1
4	SCREW #6-32 x ¼	21590-12081	4	4
5	LINER	A50002-048-50	1	
5	LINER	A50002-048-51		1
6	LOCKWASHER #6	23703-00120	4	4