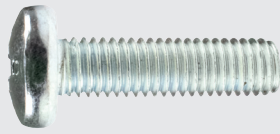
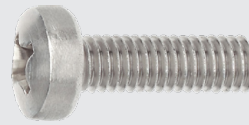


PAN HEAD SCREW



Zinc



Stainless Steel

AS 1427:1996 / MILD STEEL
DIN 7985 / 316 / A4

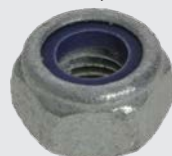
Thread Size	Length (mm)	Zinc Plated (Mild Steel)			Stainless Steel (316) (DIN 7985)		
		Part No.	Box Qty	Service Guide	Part No.	Box Qty	Service Guide
M6	12	PS612Z	200	C	PS612S	100	C
	16	PS616Z	200	A	PS616S	100	C
	20	PS620Z	200	A	PS620S	100	C
	25	PS625Z	200	A	PS625S	100	A
	30	PS630Z	200	A	PS630S	100	C
	35	PS635Z	200	C	-	-	-
	40	PS640Z	200	A	PS640S	100	C
	50	PS650Z	200	C	PS650S	100	C
M8	20	PS820Z	100	C	-	-	-
	25	PS825Z	100	A	-	-	-
	30	PS830Z	100	C	-	-	-
	40	PS840Z	100	C	-	-	-
	50	PS850Z	100	C	-	-	-

LOW-TENSILE FASTENERS

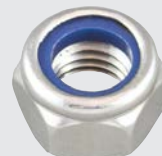
NYLOC® HEX NUT



Zinc



Mechanically Galvanised



Stainless Steel

Mechanically Galvanised
DIN985 / CLASS 6 / 316

NYLOC®

Thread Size	Zinc Plated (Class 6)			Mechanically Galvanised (Class 6)			Stainless Steel (316) (DIN 985)		
	Part No.	Box Qty	Service Guide	Part No.	Box Qty	Service Guide	Part No.	Box Qty	Service Guide
M6	HN6NZ	200	C	-	-	-	HN6NS	100	C
M8	HN8NZ	200	C	HN8NH	200	C	HN8NS	100	C
M10	HN10NZ	200	C	HN10NH	200	C	HN10NS	100	C
M12	HN12NZ	100	C	HN12NH	100	C	HN12NS	100	C