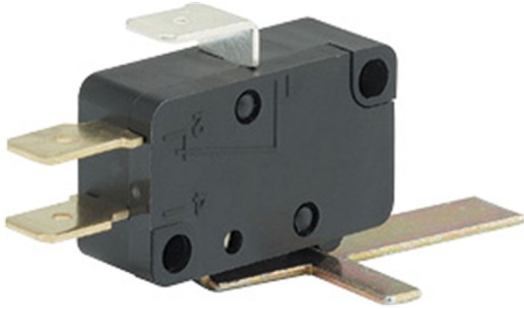




Auxiliary Contact, 1 C/O, For SCO 125-1800A / BCO 125-1600A



- Standard (I-O-II) and make before break (I-I&II-II) options available covering any application requirement
- Three stable positions (I-O-II) not affected by voltage drops or vibrations ensuring the connected load is protected against possible network interference
- Easy connections thanks to copper bar connection kit accessory for 2000 to 3200A switches enabling the use of flat or edgewise connection with top or bottom bridging.
- Compatibility with the ergonomic IP65 S-Type Handles which features interlocking (in the ON position), padlocking, UV and chemical agent resistive material and the choice of standard blue or red / yellow colour

Representative Photo Only
(actual product may vary based on configuration selections)

SPECIFICATIONS

Component Type Power Distribution & Protection	Auxiliary Contact
Ie, Rated Operational Current, nom	16 A,nom
Ie, Rated Operational Current, nom	16 A,nom

REFERENCES

IECEX Certificate	-
Supplier Declaration of Conformity:	-
Installation Guide:	-
User Manual:	-
Manufacturer Datasheet:	-
Manufacturer Catalogue & Product Selection:	-