



**HANDLE P S2 RED I-O**

- Double break per pole offers high durability and short-circuit withstand
- Use of glass fibre reinforced polyester provides high mechanical and thermal resistance (does not include SLBM or VLBM modular series)
- Quick and easy to install thanks to good centre to centre distance and connection accessories including copper connecting links.
- Wide range of accessories available which is flexible in adapting to various applications and reduces the cost of management and storage
- All Socomec load break switches are compatible with the ergonomic IP65 S-Type Handles which features interlocking (in the ON position), padlocking, UV and chemical agent resistive material and the choice of standard blue or red / yellow colour

Representative Photo Only  
(actual product may vary based on configuration selections)

**SPECIFICATIONS**

Component Type Power Distribution & Protection	Handle
Number of Poles	4
Details, Switch	SLB 125...630A
Handle Type	S2 Pistol Type type
Colour, Bezel	Yellow
Colour, Handle	Red & Yellow colour
Details, text	"OFF" padlockable, "ON" locking field convertible. Pistol - S2 type handle.
IP Rating	IP65
Padlockable	Yes

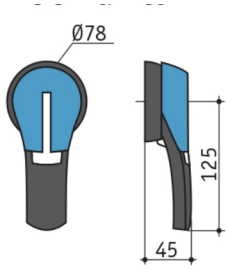
**REFERENCES**

IECEX Certificate	-
Supplier Declaration of Conformity:	-
Installation Guide:	-
User Manual:	-
Manufacturer Datasheet:	-
Manufacturer Catalogue & Product Selection:	<a href="#">14242111_Manufacturer Product Selection Guide</a>

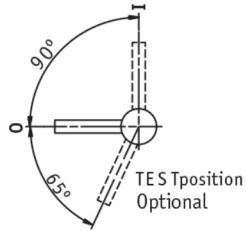
Catalogue No: **14242111**

**HANDLE EXTERNAL MOUNT S2 TYPE IP65 RED**

Power Distribution and Protection > Isolators and Transfer Switches > Load Break Switches > Socomec Load Break Switches > Socomec Accessories for Load Break Switches > External Mount Handle - S Type Series

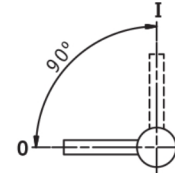
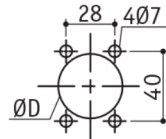


**S2 handle**



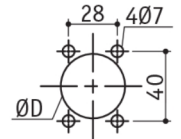
S type handle – front operation

Conventional fixing (from rear): **D** = 31 to 37 mm  
Fast fixing (external, door closed): **D** = 37 mm



S type handle – side operation

Conventional fixing (from rear): **D** = 31 to 37 mm  
Fast fixing (external, door closed): **D** = 37 mm



**Dimension Diagram**