

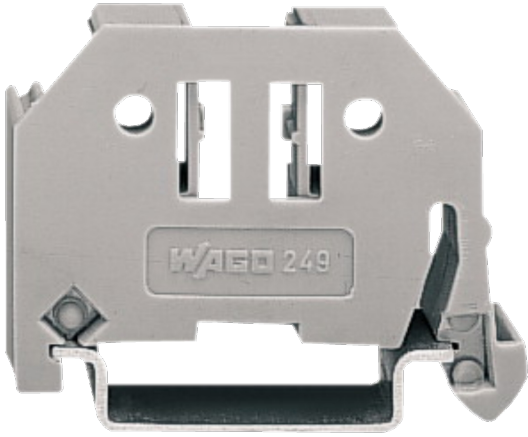
Catalogue No: **249-116**

## SCREWLESS SNAP ON END STOP TO SUIT DIN RAIL 35mm 6mm WIDE

Termination and Wiring Systems > Terminals and Pre-Wired Cables > Terminals - Screwless > WAGO Screwless Terminals > DIN Rail and Accessories > End Stops



### End Clamp Grey 6mm DIN 35



Representative Photo Only  
(actual product may vary based on configuration selections)

- Self-contained cage clamp assembly allows for quick and easy wire termination while ensuring contact quality
- Cage clamp terminals developed to suit a wide range of wire cross sections from 0.08 – 35mm<sup>2</sup>
- Alternate or staggered jumpers made in the field by simply breaking and removing jumper contacts
- Wide variety of terminal sizes and configurations including multiple conductors and decks, earth, sensor, high-current, fused and disconnect terminals
- Modular PCB terminal strips with cage clamp connection in various sizes and pin-spacing to suit any PCB solution
- Multi-connection system and WINSTA plugs and sockets suitable for lighting, power, and control connections
- Full range of accessories to complement any wire-termination solution

#### SPECIFICATIONS

Product Series	249
Component Type Termination Wiring	End Stop / Insulation Stop
Mounting	DIN-35 Rail Mount
Colour	Grey
Fire Load	0.104 MJ
Weight	0.0036 kg
Package Quantity	25 qty
Certifications	RoHS

#### REFERENCES

IECEX Certificate -

Supplier Declaration of Conformity: -

Installation Guide: -

User Manual: -

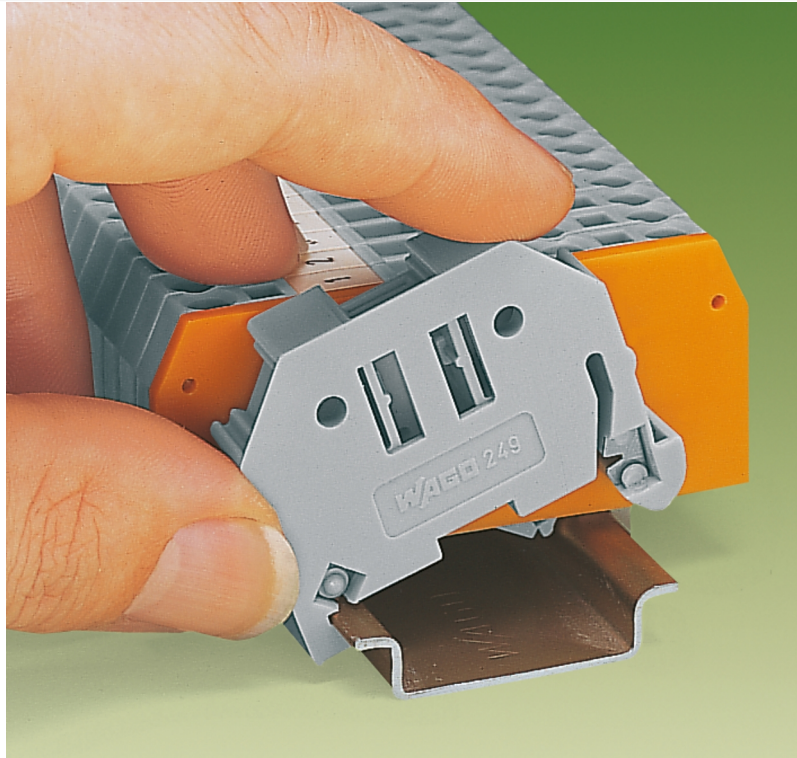
Manufacturer Datasheet: -

Manufacturer Catalogue & Product Selection: [249116\\_Manufacturer Catalogue](#)

Catalogue No: **249-116**

**SCREWLESS SNAP ON END STOP TO SUIT DIN RAIL 35mm 6mm WIDE**

Termination and Wiring Systems > Terminals and Pre-Wired Cables > Terminals - Screwless > WAGO Screwless Terminals > DIN Rail and Accessories > End Stops



Dimension Diagram