

SLB Standard load-break switches COMO M 20 to 100 A

New Range



SLB 20...40

The COMO M range of load-break switches offer compact IP 20 finger safe solutions for switching up to and including 100 A. They are ideal for the arduous switching of motors.

Standard mounting is by DIN rail or base mount with screws.

The COMO M comes complete with direct mount handle, or pistol handles and shaft. Fourth pole and auxiliary switching can also be achieved with easy clip-on modules - refer accessories.

Front operated surface mount (Supplied with direct or external handle)

	AC 22 400 V (A)	AC 23 400 V (A)	AC 23 400 V (kW)	Handle type	Cat. No.
20 A	20	20	9	Direct	SLB 20D 3P
				Pistol	SLB 20P 3P
25 A	25	25	11	Direct	SLB 25D 3P
				Pistol	SLB 25P 3P
32 A	32	32	15	Direct	SLB 32D 3P
				Pistol	SLB 32P 3P
40 A	40	40	18.5	Direct	SLB 40D 3P
				Pistol	SLB 40P 3P
63 A	63	63	30	Direct	SLB 63D 3P
				Pistol	SLB 63P 3P
80 A	80	80	40	Direct	SLB 80D 3P
				Pistol	SLB 80P 3P
100 A	100	80	40	Direct	SLB 100D 3P
				Pistol	SLB 100P 3P



SLB 63...100

SLB Standard load-break switches

SIRCO 125 to 4000 A

New Range



SLB 125...630

The SIRCO range of load-break switches offer compact solutions for switching from 125 A to 4000 A. Base mounting is standard.

The SIRCO range are a proven, reliable design that more than suit harsh Australian conditions.

The switches come complete with extended shaft and door mountable pistol grip handle. Available in three and four pole versions with a large range of accessories to choose from.

Front operated surface mount (Supplied with external handle and shaft)

	AC 21 400 V (A)	AC 23 400 V (A)	AC 23 400 V (kW)	No. of poles ¹⁾	Cat. No.
125 A	125	125	63	3	SLB 125 3P
				4	SLB 125 4P
160 A	160	160	80	3	SLB 160 3P
				4	SLB 160 4P
200 A	200	200	100	3	SLB 200 3P
				4	SLB 200 4P
250 A	250	250	132	3	SLB 250 3P
				4	SLB 250 4P
315 A	315	315	160	3	SLB 315 3P
				4	SLB 315 4P
400 A	400	400	220	3	SLB 400 3P
				4	SLB 400 4P
500 A	500	400	280	3	SLB 500 3P
				4	SLB 500 4P
630 A	630	500	280	3	SLB 630 3P
				4	<input type="checkbox"/> SLB 630 4P
800 A	800	800	450	3	SLB 800 3P
				4	<input type="checkbox"/> SLB 800 4P

Notes: ¹⁾ 6 and 8 pole switches available on indent. Refer NHP.

Available on indent only.



SLB 800...3150

SLB Standard load-break switches

SIRCO 125 to 4000 A (cont'd)

New Range

The SIRCO range of load-break switches offer compact solutions for switching from 125 A to 4000 A. Base mounting is standard.

The SIRCO switches come complete with extended shaft and door mountable pistol grip handle. Available in three and four pole versions with a large range of accessories to choose from.



SLB 800...3150

Front operated surface mount (Supplied with external handle and shaft)

	AC 21 400 V (A)	AC 23 400 V (A)	AC 23 400 V (kW)	No. of poles ¹⁾	Cat. No.
1000 A	1000	1000	560	3	SLB 1000 3P
				4	<input type="checkbox"/> SLB 1000 4P
1250 A	1250	1000	560	3	SLB 1250 3P
				4	<input type="checkbox"/> SLB 1250 4P
1600 A	1600	1000	560	3	SLB 1600 3P
				4	<input type="checkbox"/> SLB 1600 4P
1800 A	1800	1000	560	3	SLB 1800 3P
				4	<input type="checkbox"/> SLB 1800 4P
2000 A	2000	1250	710	3	SLB 2000 3P
				4	<input type="checkbox"/> SLB 2000 4P
2500 A	2500	1250	710	3	SLB 2500 3P
				4	<input type="checkbox"/> SLB 2500 4P
3150 A	3150	1250	710	3	SLB 3150 3P
				4	<input type="checkbox"/> SLB 3150 4P
4000 A	4000	1250	710	3	SLB 4000 3P ²⁾
				4	<input type="checkbox"/> SLB 4000 4P ²⁾

Notes: ¹⁾ 6 and 8 pole switches available on indent. Refer NHP.

²⁾ Supplied with 2 N/O and 2 N/C auxiliaries as standard.

Available on indent only.

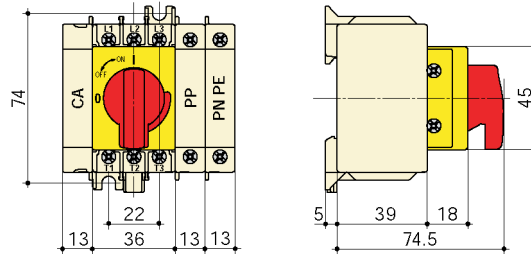


SLB 4000

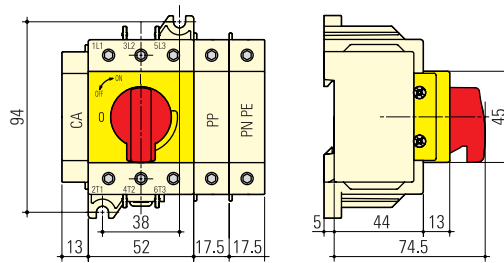
Technical data and dimensions (mm)

COMO M SLB 20 to 100 A

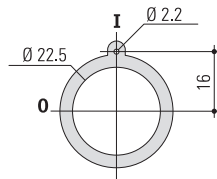
COMO M 20 to 40 A



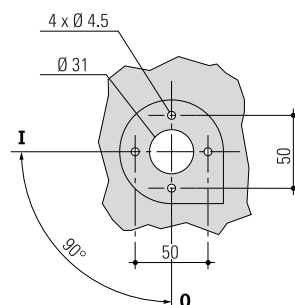
COMO M 63 to 100 A



COMO M Selector handle door drilling



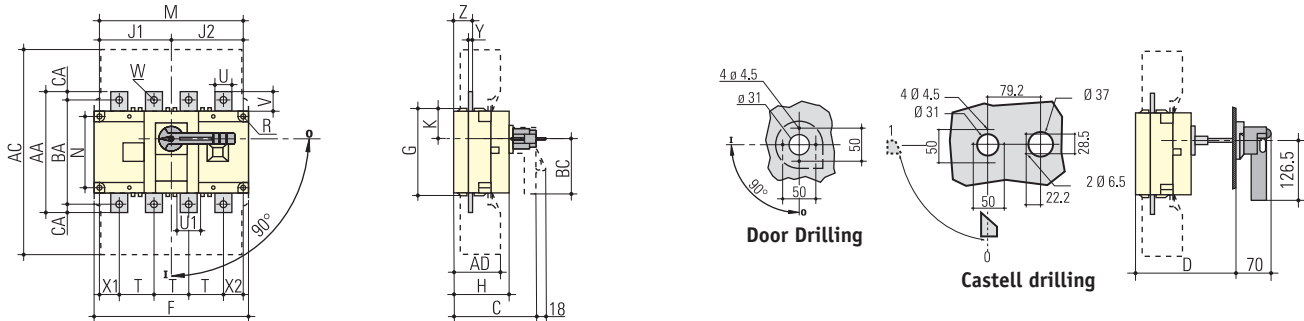
COMO M Pistol handle door drilling



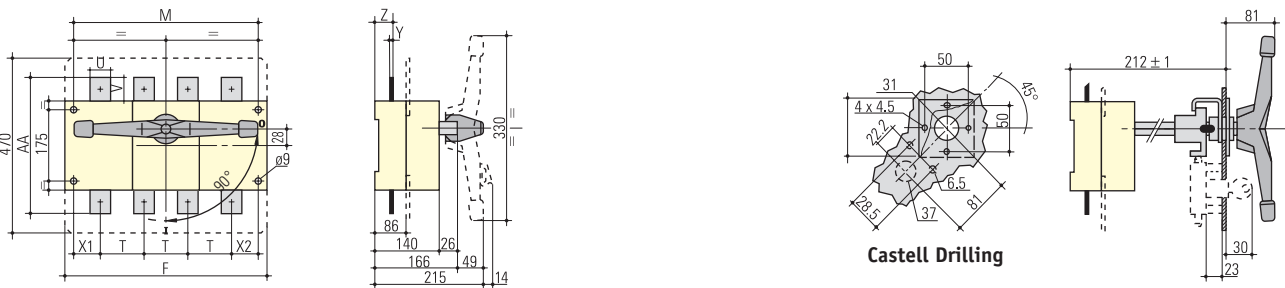
Technical data and dimensions (mm)

SIRCO SLB 125 to 2500 A

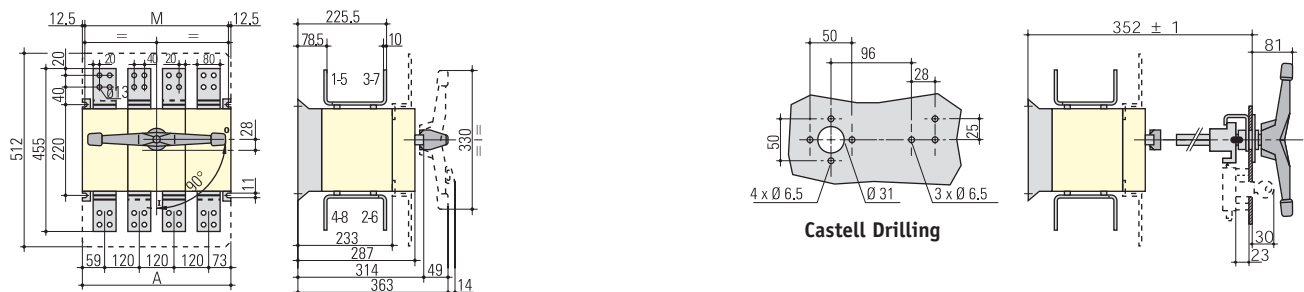
SIRCO 125 to 2500 A



Rating A	Overall dimensions			Terminal shrouds		Switch body								Switch mounting				Connection terminals												
	C	D		AC	AD	F 3p	F 4p	G	H	J1 3p	J2 4p	K	BC	M 3p	M 4p	N	R	T	U	U1	V	W	X1 3p	X1 4p	X2	Y	Z	AA	BA	CA
125	120	124...354	235	50	140	170	93	65	45	75	75	31.5	80	120	150	65	5.5	36	20	20.5	25	9	28	22	20	3.5	20.5	135	115	10
160	120	124...354	235	50	140	170	93	65	45	75	75	31.5	80	120	150	65	5.5	36	20	20.5	25	9	28	22	20	3.5	20.5	135	115	10
200	130	135...365	290	60	180	230	108	75	55	105	105	34	115	160	210	80	5.5	50	25	25.5	30	11	33	33	27	3.5	22.5	160	130	15
250	130	135...365	290	60	180	230	108	75	55	105	105	34	115	160	210	80	5.5	50	25	25.5	30	11	33	33	27	3.5	22.5	160	130	15
315	165	167...397	401	89	230	290	170	110	75	135	135	55	115	210	270	140	7	65	32	45.5	37.5	11	42.5	37.5	37.5	5	36	235	205	15
400	165	167...397	401	89	230	290	170	110	75	135	135	55	115	210	270	140	7	65	32	45.5	37.5	11	42.5	37.5	37.5	5	36	235	205	15
500	165	167...397	401	89	230	290	170	110	75	135	135	55	115	210	270	140	7	65	32	45.5	37.5	13	42.5	37.5	37.5	5	36	235	205	15
630	165	167...397	400	89	230	290	170	110	75	135	135	55	115	210	270	140	7	65	45	45.5	50	13	42.5	37.5	37.5	5	36	260	220	20



Rating A	Switch body		Switch mounting		T	U	V	Connection terminals				
	F 3p	F 4p	M 3p	M 4p				Y	X1	X2	Z	AA
800	280	360	255	335	80	50	60.5	7	47.5	47.5	46.5	321
1000	280	360	255	335	80	50	60.5	7	47.5	47.5	46.5	321
1250	372	492	347	467	120	90	44	8	53.5	53.5	47.5	288
1600	372	492	347	467	120	90	44	8	53.5	53.5	47.5	288
1800	372	492	347	467	120	90	44	8	53.5	53.5	47.5	288

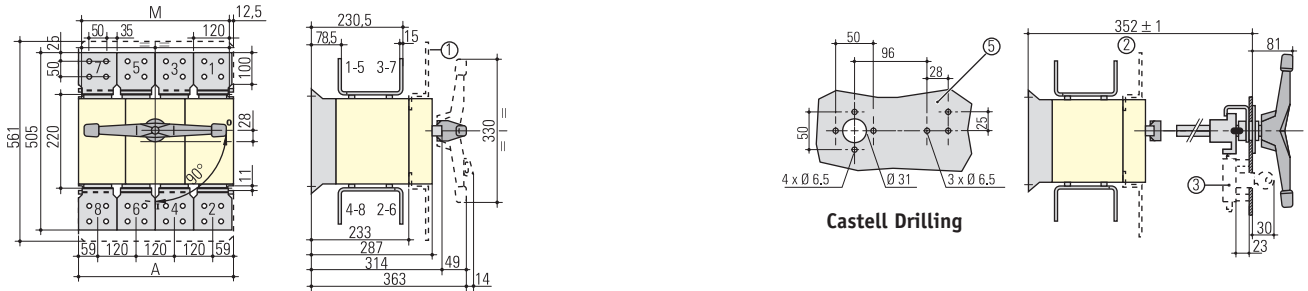


Rating A	Overall dimensions		Switch mounting	
	A 3p	A 4p	M 3p	M 4p
2000	372	492	347	467
2500	372	492	347	467

Technical data and dimensions (mm)

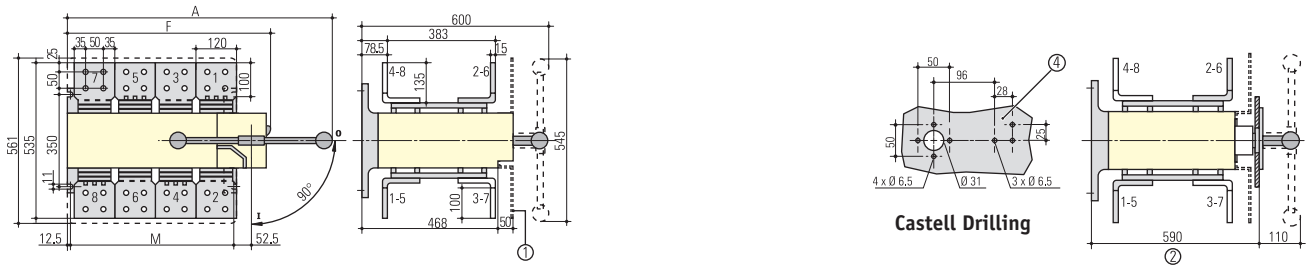
SIRCO SLB 3150 to 4000 A

SIRCO 3150 A



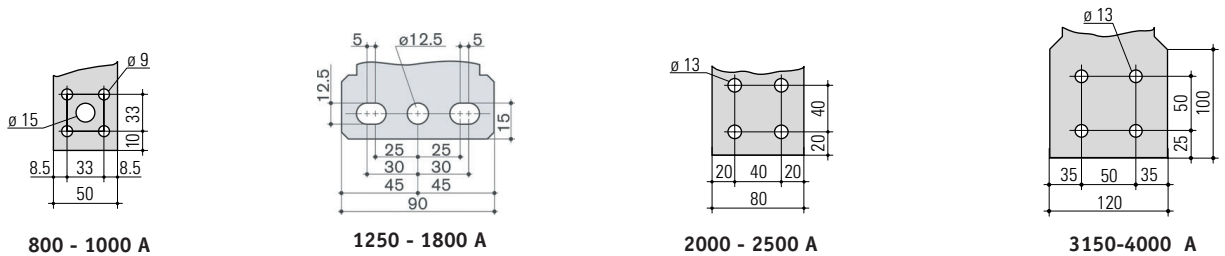
Rating A	Overall dimensions		Switch mounting	
	A 3p	A 4p	M 3p	M 4p
3150	372	492	347	467

SIRCO 4000 A



Rating A	Overall dimensions		Switch body		Switch mounting	
	A 3p	A 4p	F 3p	F 4p	M 3p	M 4p
4000	684	804	470	590	347	467

SIRCO Connection terminals - 800 to 4000 A



Technical data and ratings chart

COMO M SLB 20 to 100 A

Ratings to AS 3947-3 and IEC 60947-3

			20 A	25 A	32 A	40 A	63 A	80 A	100 A							
Rated insulation voltage and rated operation voltage AC 20/DC 20	V		800	800	800	800	800	800	800							
Rated impulse withstand voltage	kV		8	8	8	8	8	8	8							
Rated operational current																
AC 21A	400 V	A	20	25	32	40	63	80	100							
	500 V	A	20	25	32	40	63	80	100							
	690 V	A	20	25	32	40	63	80	100							
AC 22A	400 V	A	20	25	32	40	63	80	100							
	500 V	A	20	25	32	40	63	80	100							
	690 V	A	20	25	32	40	63	80	100							
AC23A	400 V	A	20	25	32	40	63	80	80							
	500 V	A	16	20	25	32	50	63	63							
	690 V	A	16	20	20	20	50	50	50							
Rated operational current																
DC 21A	400 V	A	Refer NHP													
	500 V	A														
DC 22A	400 V	A														
	500 V	A														
DC 23A	400 V	A														
	500 V	A														
Operational power																
AC 23A	400 V	kW								9	11	15	18.5	30	40	40
	500 V	kW								9	11	15	18.5	33	40	40
	690 V	kW								11	15	15	15	45	45	45
Overload capacity																
Short time withstand current I _{cw} (RMS 1s) 690 V	kA		1.26	1.26	1.26	1.26	1.5	1.5	1.5							
Breaking capacity AC 23A	400 V	A	160	200	256	320	504	640	640							
Fuse protected short circuit withstand. (kA RMS prospective)	400 V AC	kA	50	50	50	50	25	25	25							
	Fuse	A	20	25	32	40	63	80	100							
Mechanical endurance	Ops		100000	100000	100000	100000	30000	30000	30000							
Weight (3 pole)	Kg		0.13	0.13	0.13	0.13	0.25	0.25	0.25							
Min. tightening torque	Nm		2	2	2	2	4	4	4							
Connection cable size	mm ²		2.5/16	2.5/16	4/16	6/16	16/50	16/50	25/50							

Note: 240/415 V ratings suitable for use on 230/400 V in accordance with AS 60038 : 2000.

Technical data and ratings chart

SIRCO SLB 125 to 630 A

Ratings to AS 3947-3 and IEC 60947-3

			125 A	160 A	200 A	250 A	315 A	400 A	500 A	630 A
Rated insulation voltage and rated operation voltage AC 20/DC 20	V		800	800	800	800	1000	1000	1000	1000
Rated impulse withstand voltage	kV		8	8	8	8	12	12	12	12
Rated operational current										
AC 21A	400 V	A	125	160	200	250	315	400	500	630
	500 V	A	125	160	200	250	315	400	500	630
	690 V	A	125	160	200	250	315	400	500	500
AC 22A	400 V	A	125	160	200	250	315	400	500	630
	500 V	A	125	125	200	250	315	400	500	500
	690 V	A	-	-	-	125	250	250	250	315
AC23A	400 V	A	125	160	200	250	315	400	500	500
	500 V	A	100	100	160	200	315	315	315	315
	690 V	A	-	-	-	100	160	160	160	160
Rated operational current										
DC 21A	400 V	A	125	160	160	250	315	400	400	630
	500 V	A	125	125	160	200	315	400	400	500
DC 22A	400 V	A	125	160	160	200	315	400	400	500
	500 V	A	125	125	160	200	315	315	315	500
DC 23A	400 V	A	125	125	160	200	315	400	400	500
	500 V	A	125	125	160	200	315	400	400	500
Operational power										
AC 23A	400 V	kW	63	80	100	132	160	220	280	280
	500 V	kW	63	63	110	140	220	220	220	220
	690 V	kW	55	55	75	90	150	150	150	150
Overload capacity										
Short time withstand current I _{cw} (RMS 1s) 690 V	kA		7	7	9	9	13	13	13	13
Breaking capacity AC 23A	400 V	A	1000	1280	1600	2000	2520	3200	4000	4000
Fuse protected short circuit withstand. (kA RMS prospective)	400 V AC	kA	100	100	80	50	100	100	100	70
	Fuse	A	125	160	200	250	315	400	500	630
Rated capacitor power	kVAr		55	75	90	115	145	185	230	290
Mechanical endurance	Ops		10000	10000	10000	10000	5000	5000	5000	5000
Weight (3 pole)	Kg		1	1.5	2	2	3.5	3.5	3.5	3.5
Min. tightening torque	Nm		6.5	6.5	10	10	15.4	14.5	14.5	14.5
Connection cable size	mm ²		35/50	50/95	70/95	95/150	150/240	185/240	240/240	2 (150/300)

Note: 240/415 V ratings suitable for use on 230/400 V in accordance with AS 60038 : 2000.

Technical data and ratings chart

SIRCO SLB 800 to 4000 A

Ratings to AS 3947-3 and IEC 60947-3

		800 A	1000 A	1250 A	1600 A	1800 A	2000 A	2500 A	3150 A	4000 A
Rated insulation voltage and rated operation voltage AC 20/DC 20	V	1000	1000	1000	1000	1000	1000	1000	1000	1000
Rated impulse withstand voltage	kV	12	12	12	12	12	12	12	12	12
Rated operational current										
AC 21A	400 V A	800	1000	1250	1600	1600	2000	2500	3150	3150
	500 V A	800	1000	1250	1600	1600	2000	2500	3150	3150
	690 V A	800	1000	1000	1600	1600	2000	2000	2000	2000
AC 22A	400 V A	800	1000	1250	1250	1250	2000	2000	2500	2500
	500 V A	800	1000	1000	1250	1250	1600	1600	2000	2000
	690 V A	800	630	630	800	800	1000	1000	1000	1000
AC 23A	400 V A	800	1000	1000	1000	1000	1250	1250	1250	1250
	500 V A	630	800	800	1000	1000	1000	1000	1000	1000
	690 V A	200	400	400	500	500	800	800	800	800
Rated operational current										
DC 21A	400 V A	800	1000	1250	1600	1600	2000	2000	2000	2000
	500 V A	630	1000	1250	1250	1250	1250	1250	1250	1250
DC 22A	400 V A	800	1000	1250	1250	1250	1250	1250	1250	1250
	500 V A	800	1000	1250	1250	1250	1250	1250	1250	1250
DC 23A	400 V A	800	1000	1000	1000	1000	1000	1000	1000	1000
	500 V A	800	1000	1000	1000	1000	1000	1000	1000	1000
Operational power										
AC 23A	400 V kW	450	560	560	560	560	710	710	710	710
	500 V kW	450	560	560	710	710	710	710	710	710
	690 V kW	185	400	400	475	475	750	750	750	750
Overload capacity										
Short time withstand current I _{cw} (RMS 1s) 690 V	kA	26	35 ¹⁾	50	50	50	50	50	55	70
Breaking capacity AC 23A	400 V A	6400	8000	8000	8000	8000	10000	10000	10000	10000
Fuse protected short circuit withstand. (kA RMS prospective)	400 V AC kA	50	100	100	100	100	100	100	-	-
	Fuse A	800	1000	1250	2x800	2x800	2x1000	2x1000	-	-
Rated capacitor power	kVAr	365	460	575	-	-	-	-	-	-
Mechanical endurance	Ops	4000	4000	4000	3000	3000	3000	2500	2500	2500
Weight (3 pole)	Kg	8	10.5	10.5	16	17	31	32	42	90
Min. tightening torque	Nm	37	37	37	50	50	60	60	60	110
Connection cable size	mm ²	2 (185/300)	2 240/4 185	4 185 max	6 240 max	-	-	-	-	-

Notes: ¹⁾ 50 kA switch available in larger frame size. Refer NHP.
240/415 V ratings suitable for use on 230/400 V in accordance with AS 60038 : 2000.