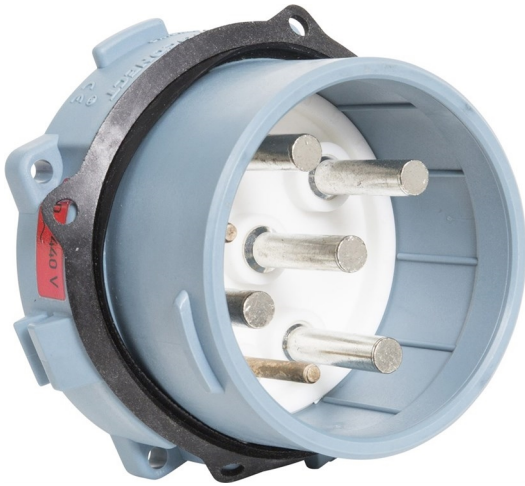


# Catalogue No: 3PS9A3NE01P

## 3PS125 APPLIANCE INLET 3P+N+E+2P 150A (AC23 100A) 440V AC

Plugs, Sockets and Switches > Isolating Plugs and Sockets > Isolating Plugs and Sockets > Proconnect Plugs and Sockets > 150A Disconnect Plugs and Sockets (3PS125 Series) > Appliance Inlets



Representative Photo Only  
(actual product may vary based on configuration selections)

### 3PS125 Appliance Inlet 3P+N+E+2P

- Available in five sizes including 30A, 50A, 90A, 150A and 250A (Maximum current rating to IEC60309)
- 3, 4 and 5 pin configurations with optional pilot pins, silver alloy tipped for low voltage drop and high arc resistance
- AC23 rating for making and breaking high inductive loads
- Connect and disconnect under load, eliminates the need for switching
- Interlocked socket and appliance inlet with 24 insert settings (Factory Set) preventing mismatching for a safe and reliable connection
- High ingress protection and exceptional impact resistance, IP66 / IK 08
- Resistance to most industrial chemicals, detergents and exposure to UV light
- Range of angled wall boxes, incline sleeves and handles for all plug and socket combinations

#### SPECIFICATIONS

Product Series	3PS
Component Type Plugs And Sockets	Appliance Inlet
Contacts (Poles)	3P + N + E + 2p
Ie, Rated Operational Current, AC-23, 440V	100 A@440V
Ie, Rated Operational Current, max	150 A,max
M Rating (AS 3133)	M500 AS 3133
Ue, Rated Operational Voltage, AC, min	380 V AC
Ue, Rated Operational Voltage, AC, max	440 V AC
IP Rating	IP66
IK Rating	IK08
Wire / Conductor Size (Max)	70 mm <sup>2</sup>
Wire / Conductor Size, Flex Cable, Max	50 mm <sup>2</sup> max
Diameter, Cable Jacket, Min	22 mm
Diameter, Cable Jacket, Max	45 mm
Strip Length, Insulation	37 mm
Strip Length, Sheathing	90 mm
Tightening Torque, Nominal	6 Nm
Material, Body / Housing	Nylon / PA6 / PA66 (Polyamide 6) material
Material, Contacts	Silver-Plated Copper Alloy material
Material, Screws / Fastening	Stainless Steel Screws/Fastening
Depth	101 mm
Weight	0.75 kg
Operating Temperature, Min	-30 °C min
Operating Temperature, Max	60 °C max
Standards Compliance	AS/NZS 3947.3 IEC 60309-1 IEC 60529 IEC 60947-3

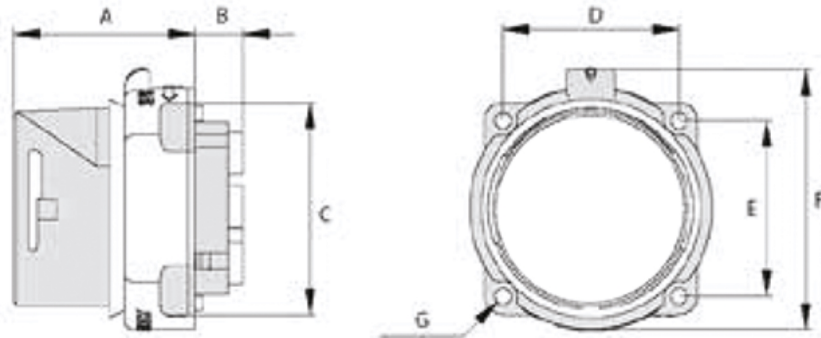
# Catalogue No: **3PS9A3NE01P**

## 3PS125 APPLIANCE INLET 3P+N+E+2P 150A (AC23 100A) 440V AC

Plugs, Sockets and Switches > Isolating Plugs and Sockets > Isolating Plugs and Sockets > Proconnect Plugs and Sockets > 150A Disconnect Plugs and Sockets (3PS125 Series) > Appliance Inlets



REFERENCES	
IECEX Certificate	-
Supplier Declaration of Conformity:	-
Installation Guide:	-
User Manual:	-
Manufacturer Datasheet:	-
Manufacturer Catalogue & Product Selection:	-



Series	A	B	C $\theta$	D	E	F	G $\theta$	kg
<b>3PS16</b>	49.5	13	57	48	48	71	4.5	0.14
<b>3PS32</b>	54.5	16	69	55	55	82.4	4.5	0.23
<b>3PS63</b>	62.5	25.5	80	66	66	96.4	5.5	0.39
<b>3PS125</b>	77	24	99.5	81	81	122.5	5.5	0.75
<b>3PS200</b>	82	37	116	98	98	137	5.5	1.48

Dimension Diagram