



## SELV LED DOWNLIGHT KITS S9001 / S9003

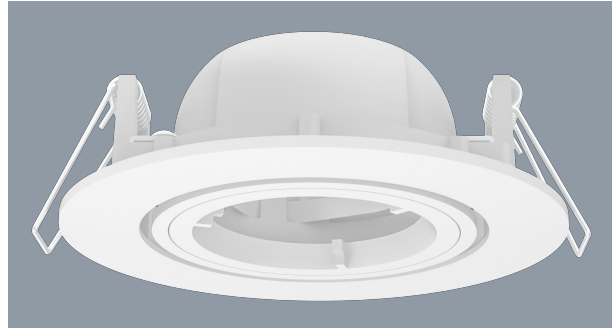
SELV LED downlight kits

### Application

Ideal for any residential or commercial interior spaces

### Design Specifications

- Step 1 - Select your downlight head profile
- Step 2 - Select your driver type
- Step 3 - Select your lamp type and you are ready to go!



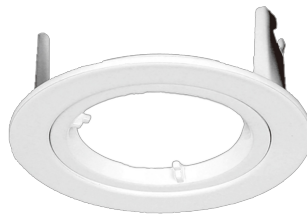
### Performance

Dimmable - **OPTIONAL**

Dimmer Type - **refer lamp and driver selection**

Due to continued product and technology enhancements, data sourced from sal.net.au shall not form part of any contract and or technical performance guarantee unless expressly confirmed in writing by SAL at the time of order. Products are sold in accordance with [SAL Terms and Conditions of sale](#) and all images shown are for illustration purposes only and may vary from the actual colour or finish. Unless specifically stated, all IP ratings nominated for Interior products are from "below the ceiling".

### Product Images



#### DOWNLIGHT FITTINGS S9001, S9003

Low Voltage LED  
downlight kit (Round)



Select your downlight  
in three easy steps

Step 1 - Select your downlight head profile

##### Technical Specifications

Model No.	Head	Fitting Colour	Cut Out (Ø)	Dimension (Ø)
S9001R	Fixed head, hole lock	White	72mm	81mm
S9001W	Fixed head, hole lock	White	72mm	81mm
S9001C	Fixed head, hole lock	Brush Chrome	72mm	81mm
S9001K	Gimbal 45°, hole lock	Black	72mm	81mm
S9003R	Gimbal 45°, hole lock	White	92mm	103mm
S9003C	Gimbal 45°, hole lock	Brush Chrome	92mm	103mm

Step 2 - Select your driver type

Electronic transformers (please select one for MR16 lamps)

Model No.	Input Voltage	Power (W)	Output Voltage	Power Factor	Dimensions (L x W x H mm)	1.2m Max. & 2.0m Max. Effect
MR16D	240/230	10/20	12.5	0.99	108 x 42 x 24	Yes
MR16K	240/230	20/40	11.5	0.99	108 x 42 x 24	Yes

Step 3 - Select your lamp type and you are ready to go!



Low voltage LED globes (please select one)

Model No.	Input Voltage	Power (W)	Lumen (lm)	CCT (K)	Beam Angle	Dimmable	Lamp Base	Dimensions (L x W x H mm)
MR16/5W/TC	12 V	5	240/400/500	3000/4000/5000	30°	No	GU5.3	50 x 55
MR16/7W/TC	12 V	7	350/450/550	3000/4000/5000	30°	No	GU5.3	50 x 55
MR16GMW/5W	12 V	5	500	3000	40°	Yes	GU5.3	50 x 49
MR16GMW/7W	12 V	7	500	3000	40°	Yes	GU5.3	50 x 49

OR

Dimmable LED modules (please select one)

Model No.	Input Voltage	Power (W)	Lumen (lm)	CCT (K)	CRI	Beam Angle	Dimmable
S905TCP	240/230	5	240/400/500	3000/4000/5000	> 90	40°	Yes
S905WP	240/230	5	700	3000	> 90	40°	Yes
S905MC lamp	240/230	5	420	3000	> 90	40°	Yes