



56 Series™ LED

56LEDK1 and

56LEDK3

Instruction Manual

TOOLS REQUIRED

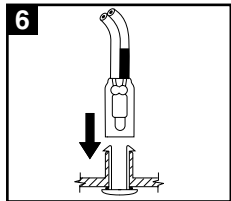
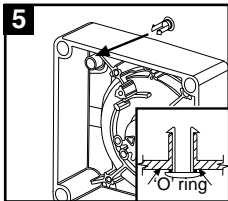
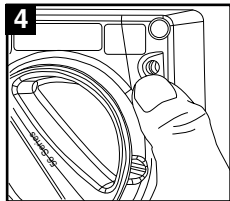
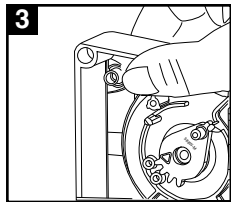
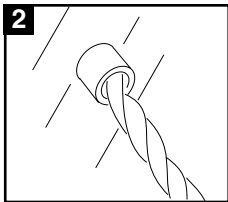
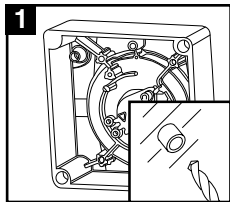
- 1 electric drill
- 1 new 5.5mm (7/32) drill bit (included)

IMPORTANT

To ensure IP rating
read these instructions

Mounting Instructions

1. Insert drill bit into drill guide.
2. Drill hole with a constant light handed pressure.
3. Remove any swarf from drill guide.
4. Ensure outside face hole is flat.
Note: A rub with your thumbnail is enough.
5. Assemble the 'O' ring onto the lens. Push LED lens through drilled hole until clips snap over drill guide.
6. Slide LED wire assembly over drill guide.
Note: In high vibration environments use approved jointing cement to ensure LED is not dislodged.



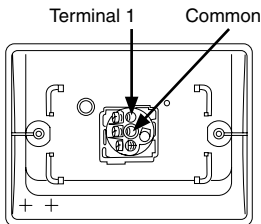
Note: For 56LEDK3 apply mounting instructions to all three LED wire assemblies (Red, White and Blue). Connect fly leads to each phase, active or switched active circuit.

Weathershield Series

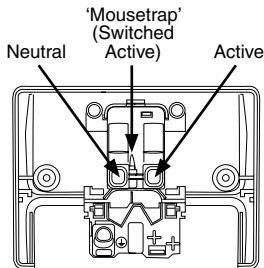
1. When fitting to Weathershield range, follow steps 1-6 on previous page.
2. Connect fly lead to active or switched active circuit.

For WSC Series 'power available' connect into active terminal, for power 'on' push fly lead into switched active terminal. Connect alternative fly lead to neutral circuit, or in three phase installations to 120 degrees alternative phase active conductor.

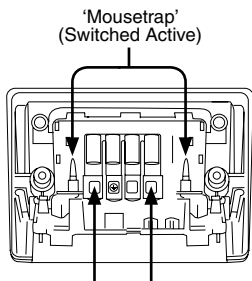
1



WS and WSF Series



WSC227/1 Series



WSC227/2 Series

Schneider Electric Australia Pty Ltd

National Customer Care Enquiries:

Australia 1300 2025 25

New Zealand 0800 652 999

Schneider Electric Australia Pty Ltd reserves the right to change specifications, modify designs and discontinue items without incurring obligation and whilst every effort is made to ensure that descriptions, specifications and other information in this catalogue are correct, no warranty is given in respect thereof and the company shall not be liable for any error therein.

© Copyright Schneider Electric Australia Pty Ltd. The identified trademarks and copyrights are the property of Schneider Electric Pty Ltd unless otherwise noted.