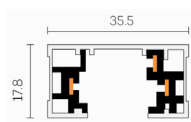
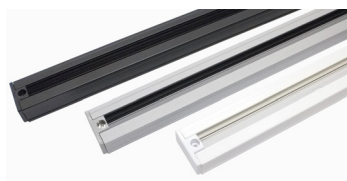


Single Circuit Three Wire Track System

EXT600 EXT1000 EXT2000 Surface Mount Single Circuit 3-Wire Track System



Description: 3-Wire single circuit surface mount track, complete with dead ends. Rated for 20A. 20kg weight load. Available in various colours, and lengths for flexibilities.

Item Code	Voltage	Colour	Length	Dimensions W x H
EXT6000	240V	White	600 mm	35 x 15 mm
EXT1000	240V	Black / Silver / White	1000 mm	35 x 15 mm
EXT2000	240V	Black / Silver / White	2000 mm	35 x 15 mm

EXT-ADAPTOR 3-Wire 240V Square Adaptor



Description: A universal connection designed to adapt spotlight head to a 240V 3 wire track. 10kg weight bearing capacity. Flex must be looped and secured if using for pendant adaptation. Spade terminals for soldering. Rated for 10A.

Item Code	Colour
EXT-ADAPTOR	Black / Silver / White

EXT-ADAPTORHD 3-Wire 240V Heavy Duty Adaptor



Description: A robust adaptor designed to adapt a spotlight head to a 240V single circuit track. Features two locking arms. 10kg weight bearing capacity.

Item Code	Colour	Size L x W x H
EXT-ADAPTORHD	Black / Silver / White	95 x 30 x 42 mm

EXT-ADAPTORHDT 3-Wire 240V Heavy Duty Adaptor



Description: A robust adaptor designed to adapt a spotlight head to a 240V single circuit track. Features no solder - push pin style terminal.

Item Code	Colour
EXT-ADAPTORHDT	Black / White

EXT-BJ Live Joiner



Description: Live Joiner to connect two tracks. Mains power may be connected from this joiner

Item Code	Colour
EXT-BJ	Black / Satin Nickel / Silver / White

EXT-DEADEND End Cap



Description: Dead End Cap to terminate track run.

Item Code	Material	Colour
EXT-DEADEND	Material	Black / Silver / White

EXT-EJ Live Elbow Joiner



Description: Elbow joiner to join two tracks in a 90 degree angle. Mains power may be connected from this joiner.

Item Code	Material	Colour
EXT-EJ	Plastic	Black / Silver / White

EXT-FJ Live Flexible Joiner



Description: Live flexible joiner to connect two tracks in a flexible angle. Mains power may be connected from this joiner.

Item Code	Material	Colour
EXT-FJ	Plastic	Black / Silver / White

R&C AGENCY INTERNATIONAL

94 Wecker Road,
Mansfield, QLD, 4122

Email: sales@rcagency.com.au
Ph: (07) 3216 2888
Fax: (07) 3216 2999

Opening Hour:
8:00am to 4:30pm Monday to Friday
*Showroom by appointment only

Single Circuit Three Wire Track System



GRE Lighting
R & C Agency International
Lighting Specialists for over 15 years

EXT-J Straight Joiner



Description: Joiner to connect two tracks

Item Code	Material	Colour
EXT-J	Plastic	Black / Silver / White

EXT-L Live End



Description: Live End to feed power to 3 wire track.

Item Code	Material	Colour
EXT-L	Plastic	Black / Silver / White

EXT-TJ Live T Joiner



Description: T live Joiner to connect three tracks. Mains power may be connected from this joiner.

Item Code	Material	Colour
EXT-TJ	Plastic	Black / Silver / White

EXT-WIRE/T Suspension Kit



Description: Adjustable 3m and 6 maximum lengths suspension kit designed for track system.

Item Code	Maximum Length
EXT-WIRE/T	3m
EXT-WIRE/T-6M	6m

EXT-XJ Live X Joiner



Description: X live Joiner to connect four tracks. Mains power may be connected from this joiner

Item Code	Material	Colour
EXT-XJ	Plastic	Black / Silver / White

EXT-T3/TD 12V Track Adaptor



Description: 12V Track adaptor to suit 12V spotlight heads. Available in 12VAC for Dichroics and non dimmable LEDs, and 12VDC for dimmable LEDs.

Use EXT-T3/TD: For LEDMR169W, LEDMR1610W and Dichroics

Use EXTDR24700 for LEDAR111/CCU (Dimmable With RCADIMMERHD200T)

Use EXTDC12V-12W: For LED216, LEDMR168W / LEDMR169W (Dimmable With RCADIMMWEHD200T for LED216 and LEDMR168W only)

Item Code	Material	Colour
EXT-T3/TD	Plastic	Black / Silver / White

R&C AGENCY INTERNATIONAL

94 Wecker Road,
Mansfield, QLD, 4122

Email: sales@rcagency.com.au
Ph: (07) 3216 2888
Fax: (07) 3216 2999

Opening Hour:
8:00am to 4:30pm Monday to Friday
*Showroom by appointment only