

# PRESENCE SENSING SAFETY DEVICES

Safedge Pressure Sensitive Edge System



Note: These are factory built, straight profile configurations.

Description	C-rail		Cable Entrance / Exit				Termination		Cat. Number				Control Units	Material code		Profile
	Aluminium	Zinc Coated	Left	Right	Straight	Under	Parallel	Series	1m cable	2m cable	3m cable	5m cable		EPDM	NBR/CR	
Safedge Safety Edges	•	•	•				•		440F-E-AAA	440F-E-ABB	440F-E-ACC	440F-E-ADD	440F-C252D (Single channel output) or 440F-C251D, 440F-C251P (Dual channel output)	A	C	25-11-132
	•	•	•				•		440F-E-AAU	440F-E-ABU	440F-E-ACU	440F-E-ADU				
	•	•	•					•	440F-E-AAV	440F-E-ABV	440F-E-ACV	440F-E-ADV				
	•	•	•	•				•	440F-E-AFF	440F-E-AGG	440F-E-AHH	440F-E-AII				
	•	•	•	•				•	440F-E-AFU	440F-E-AGU	440F-E-AHU	440F-E-AIU				
	•	•	•	•				•	440F-E-AFY	440F-E-AGV	440F-E-AHV	440F-E-AIV				
	•	•	•		•				440F-E-AKK	440F-E-ALL	440F-E-AMM	440F-E-ANN				
	•	•	•		•			•	440F-E-AKU	440F-E-ALU	440F-E-AMU	440F-E-ANU				
	•	•	•		•			•	440F-E-AKV	440F-E-ALV	440F-E-AMV	440F-E-ANV				
	•	•	•		•			•	440F-E-APP	440F-E-AQQ	440F-E-ARR	440F-E-ASS				
	•	•	•		•			•	440F-E-APU	440F-E-AQU	440F-E-ARU	440F-E-ASU				
	•	•	•		•			•	440F-E-APV	440F-E-AQV	440F-E-ARV	440F-E-ASV				
	•	•	•	•					440F-E-BAA	440F-E-BBB	440F-E-BCC	440F-E-BDD				
	•	•	•	•				•	440F-E-BAU	440F-E-BBU	440F-E-BCU	440F-E-BDU				
	•	•	•	•				•	440F-E-BAV	440F-E-BBV	440F-E-BCV	440F-E-BDV				
	•	•	•	•				•	440F-E-BFF	440F-E-BGG	440F-E-BHH	440F-E-BII				
	•	•	•	•				•	440F-E-BFU	440F-E-BGU	440F-E-BHU	440F-E-BIU				
	•	•	•	•				•	440F-E-BFV	440F-E-BGV	440F-E-BHV	440F-E-BIV				
	•	•	•		•				440F-E-BKK	440F-E-BLL	440F-E-BMM	440F-E-BNN				
	•	•	•		•				440F-E-BKU	440F-E-BLU	440F-E-BMU	440F-E-BNU				
	•	•	•		•			•	440F-E-BKV	440F-E-BLV	440F-E-BMV	440F-E-BNV				
	•	•	•		•				440F-E-BPP	440F-E-BQQ	440F-E-BRR	440F-E-BSS				
	•	•	•		•			•	440F-E-BPU	440F-E-BQU	440F-E-BRU	440F-E-BSU				
	•	•	•		•			•	440F-E-BPV	440F-E-BQV	440F-E-BRV	440F-E-BSV				

Replace • with profile and material code. Eg: A for small profile with EPDM material.  
 Replace • with length of Edge in mm, 5 digit number. Eg: 50 m = 50000, 500 mm = 00500. (300 mm minimum).  
 Note: Lengths may vary +/- 2.5 mm from specified length.  
 Note: Components may be bought separately for on-site construction. Contact technical support for factory built custom shaped edge systems.

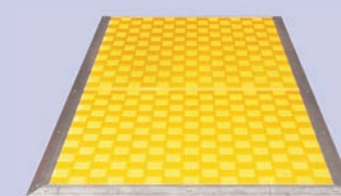
EPDM: Ethylene Propylene Diene Modified Rubber  
 NBR/CR: Acrylonitrile Butadiene Rubber/Chloroprene Rubber

SafeZone Laser Scanner



Description	Category	Resolution	Safety Field	Angular	No. of Field Sets	Cat. Number	Prewired I/O connector cable, 10M	Rear mounting bracket, kit 1	Rear mounting bracket, kit 2	Floor mounting	Configuration cable
SafeZone Multizone	3	30, 40, 50, 70, 150	5m	190°	2	442L-SFZNMZ	442L-CSFZNMZ-10	442L-AMBSFZNMZ1	442L-AMBSFZNMZ2	442L-AMBSFZNMZ3	442L-ACRS232

MatGuard Pressure sensitive Mat System



Description	Size (mm)	Cat. Number	Standard perimeter trim kit	Recommended control unit	Mat controller (IP65)	Mat Manager 2...8 mats
MatGuard Pressure Sensitive Safety Mats	500 x 500	440F-M1010BYNN	440F-TT010	MSR23 MSR30 MSR131 MSR200 MSR300	440F-C4000P	440F-C280xx
	500 x 1500	440F-M1030BYNN	440F-TT030			
	500 x 750	440F-M1015BYNN	440F-TT015			
	750 x 750	440F-M1515BYNN	440F-TT1515			
	750 x 1500	440F-M1530BYNN	440F-TT1530			
	500 x 1000	440F-M1020BYNN	440F-TT020			
	750 x 1000	440F-M1520BYNN	440F-TT1520			
	1000 x 1000	440F-M2020BYNN	440F-TT2020			
	1000 x 1250	440F-M2025BYNN	440F-TT2025			
	1000 x 1500	440F-M2030BYNN	440F-TT2030			
	1000 x 1800	440F-M2036BYNN	440F-TT2036			

Stocked safety mats shown. Other sizes are available.  
 For custom shaped mat systems contact technical support.  
 Additional cable exit options are also available to support distribution blocks and safety I/O interoperability.

# PRESENCE SENSING SAFETY DEVICES

CORE PRODUCTS FOR OPTIMIZED PRODUCTION



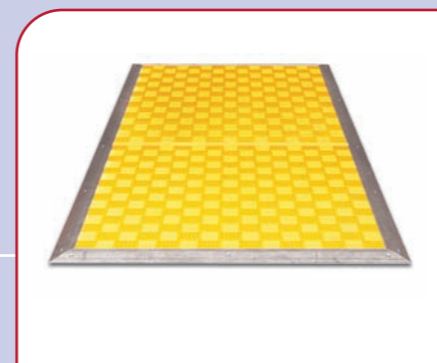
Safety Light Curtains

Allen-Bradley Guardmaster Safety Light Curtains emit infra-red light beams for the detection of operators or objects and are used to guard hazardous movement ensuring operator and machine safety. A choice of units is available catering for finger/hand detection and part or whole body detection. They utilise single or multiple beams and offer a solution for most requirements.



Safety Laser Scanner

The SafeZone Multizone Safety Laser Scanner used for area detection offers detection of people or objects in pre-defined areas. Combining a configurable warning zone and safe zone the SafeZone offers a powerful solution for presence sensing.



MatGuard Pressure Sensitive Mat System

The MatGuard system comprises of 3 main components, the pressure sensitive mats, trim and a control unit. Pressure applied to one of the interconnecting mats will trip the system. Mats are available in a selection of sizes/shapes with trims and a selection of control units are available. Ideal for guarding floor space ensuring operators can not locate themselves near hazards.



Safedge Pressure Sensitive Edge System

Safedge comprises of a pressure sensitive edging strip connected to a monitoring control unit. Light pressure from any direction through 90° on the profile will trip the system. It is easy to fit and flexible, bouncing back into shape even after repeated crushing. Ideal for use in applications such as crushing hazards, roller or powered doors and anti-climb.

PRESENCE SENSING SAFETY DEVICES  
 THE IDEAL SOLUTION FOR MACHINERY AND PERSONNEL PROTECTION WITHOUT THE NEED FOR PHYSICAL GUARDS



LISTEN.  
THINK.  
SOLVE.

Allen-Bradley - Rockwell Software

Rockwell Automation



SAFETY

GET POSITIVE RESULTS FROM YOUR SAFETY INVESTMENT



integrated  
**SAFETY**  
 LET THE RIPPLE-EFFECT  
 INCREASE YOUR BOTTOM LINE

Achieve your factory floor goals with the peace of mind that comes with an integrated safety system.

We can get your standard and safety products working together to turn your safety capital outlay into an investment with positive returns — one that increases your employees' safety and increases productivity.

How? Our combined expertise in machine safety and industrial automation means we understand your factory floor issues and how to implement safety solutions that meet your goals, using the broadest integrated safety product line available in the world. Products designed and built to global standards for high reliability, stability and quality.

Whatever your safety challenges, you'll find the answer by partnering with us.

FOR MORE INFORMATION ON SEAMLESS SAFETY INTEGRATION  
 VISIT US AT [WWW.AB.COM/SAFETY](http://WWW.AB.COM/SAFETY)

[www.rockwellautomation.com](http://www.rockwellautomation.com)

Power, Control and Information Solutions Headquarters

Americas: Rockwell Automation, 1201 South Second Street, Milwaukee, WI 53204-2496 USA, Tel: (1) 414.382.2000, Fax: (1) 414.382.4444  
 Europe/Middle East/Africa: Rockwell Automation, Vorstlaan/Boulevard du Souverain 36, 1170 Brussels, Belgium, Tel: (32) 2 663 0600, Fax: (32) 2 663 0640  
 Asia Pacific: Rockwell Automation, Level 14, Core F, Cyberport 3, 100 Cyberport Road, Hong Kong, Tel: (852) 2887 4788, Fax: (852) 2508 1846

Publication: EUSAFE-BR003C-EN-P — July 2009

© 2008 Rockwell Automation, Inc. All Rights Reserved.

