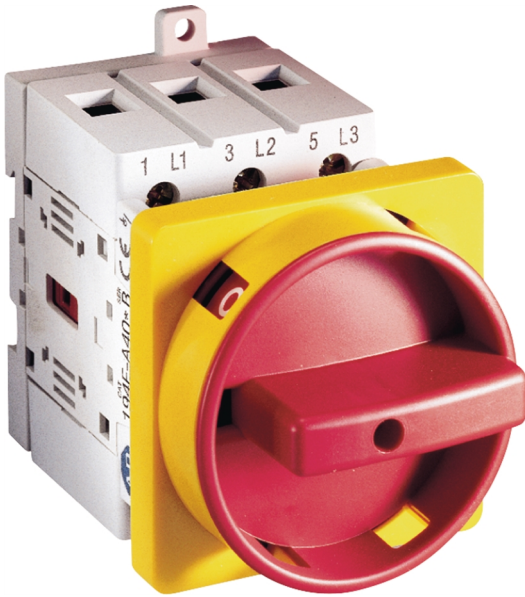


Catalogue No: 194E-A25-1753

LBS BASE/DIN OFF-ON 3P 25A

Power Distribution and Protection > Isolators and Transfer Switches > Load Break Switches > Allen-Bradley Load Break Switches > 194E Load Break Switches (16 to 100A) > Base / DIN Rail Mounting



Representative Photo Only
(actual product may vary based on configuration selections)

Load Break Switch UL/IEC 194E Din Rail 3P 25A

- Suitable as At-Motor Disconnect Switch (UL508) useful for overseas application with added UL requirements
- Bulletin 194R also suitable as service entrance disconnecting (UL98) providing even greater application use
- Greater installation flexibility with selection of front/door or DIN/base mounting configurations (194E series only)
- Padlockable Handles Available (up to 3 padlocks) for added security
- Wide range of accessories available which is flexible in adapting to various applications and reduces the cost of management and storage

SPECIFICATIONS

Product Series	Bul. 194E
Operator Type	Off/On Switch (Isolator) type
Number of Poles	3
Icw, short time withstand current, 1s (rms)	900 kA for 1s
Ui, Rated Insulation Voltage	600 V (rms)
Uimp, Impulse Withstand Voltage	8 kV
Ie, Rated Operational Current, AC-21a, 400V	25 A@400V
Ie, Rated Operational Current, AC-21a, 415V	25 A@415V
Ie, Rated Operational Current, AC-21a, 690V	25 A@690V
kW Rating, AC-23a, 400V, 3ph	11 kW @400V
kW Rating, AC-23a, 690V, 3ph	11 kW @690V
Wire / Conductor Size, Flex Cable, Min	1 mm ² min
Wire / Conductor Size, Flex Cable, Max	10 mm ² max
Wire / Conductor Size, Rigid Cable, Min	1.5 mm ² min
Wire / Conductor Size, Rigid Cable, Max	16 mm ² max
Height	150 mm
Width	95 mm
Depth	86 mm
Operating Temperature, Min	-25 °C min
Operating Temperature, Max	60 °C max
Storage Temperature, Min	-40 °C min
Storage Temperature, Max	80 °C max

Catalogue No: **194E-A25-1753**

LBS BASE/DIN OFF-ON 3P 25A

Power Distribution and Protection > Isolators and Transfer Switches > Load Break Switches > Allen-Bradley Load Break Switches > 194E Load Break Switches (16 to 100A) > Base / DIN Rail Mounting



REFERENCES

IECEX Certificate -

Supplier Declaration of
Conformity: -

Installation Guide: -

User Manual: -

Manufacturer Datasheet: -

Manufacturer Catalogue
& Product Selection: -