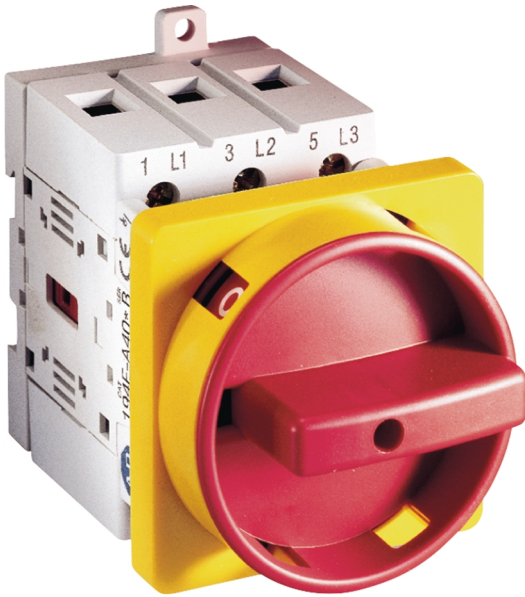


# Catalogue No: 194E-A16-1753

## LBS BASE/DIN OFF-ON 4P 16A

Power Distribution and Protection > Isolators and Transfer Switches > Load Break Switches > Allen-Bradley Load Break Switches > 194E Load Break Switches (16 to 100A) > Base / DIN Rail Mounting



Representative Photo Only  
(actual product may vary based on configuration selections)

### SWITCH LOAD 3P BASE MOUNT 16A

- Suitable as At-Motor Disconnect Switch (UL508) useful for overseas application with added UL requirements
- Bulletin 194R also suitable as service entrance disconnecting (UL98) providing even greater application use
- Greater installation flexibility with selection of front/door or DIN/base mounting configurations (194E series only)
- Padlockable Handles Available (up to 3 padlocks) for added security
- Wide range of accessories available which is flexible in adapting to various applications and reduces the cost of management and storage

#### SPECIFICATIONS

Product Series	Bul. 194E
Operator Type	Off/On Switch (Isolator) type
Number of Poles	3
Ui, Rated Insulation Voltage	600 V (rms)
Uimp, Impulse Withstand Voltage	8 kV
Ie, Rated Operational Current, AC-21a, 400V	16 A@400V
Ie, Rated Operational Current, AC-21a, 415V	16 A@415V
Ie, Rated Operational Current, AC-21a, 690V	16 A@690V
kW Rating, AC-23a, 690V, 3ph	7.5 kW @690V
Operating Temperature, Min	-25 °C min
Operating Temperature, Max	60 °C max
Storage Temperature, Min	-40 °C min
Storage Temperature, Max	80 °C max

#### REFERENCES

IECEx Certificate	-
Supplier Declaration of Conformity:	-
Installation Guide:	-
User Manual:	-
Manufacturer Datasheet:	-
Manufacturer Catalogue & Product Selection:	-