

PRODUCT DATASHEET

HQI-TS 70 W/WDL

POWERSTAR HQI-TS EXCELLENCE | Metal halide lamps with quartz technology for enclosed luminaires



AREAS OF APPLICATION

- Shop interiors, shop windows
- Shopping arcades
- Foyers, reception areas
- Buildings, monuments, bridges
- Museums, exhibitions
- Exhibition halls and trade fairs
- Pedestrian zones, public squares
- Parks and gardens
- Approved only for use in enclosed luminaires
- Outdoor applications only in suitable luminaires

PRODUCT BENEFITS

- High efficiency
- Uniform distribution of light
- Good to excellent color rendering
- Long lifetime
- Hot restrike capable
- UV values significantly below the maximum permitted thresholds to IEC 61167 thanks to UV filter

PRODUCT FEATURES

- POWERSTAR quartz technology
- Light colors: warm white (WDL), neutral white (NDL), daylight (D), cool daylight (CD)
- Average lifetime: 12,000 h



TECHNICAL DATA

Electrical data

Nominal wattage	70.00 W
Rated wattage	78.00 W
Lamp current	0.95 A
PFC capacitor at 50 Hz	12 µF ¹⁾
Nominal voltage	98 V
Ignition voltage	3.6 / 36 kVp ²⁾

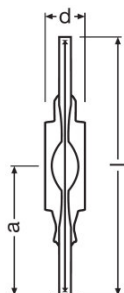
¹⁾ At rated voltage and $\cos \varphi \geq 0.9$

²⁾ Minimum / Maximum

Photometrical data

Rated lamp efficacy (standard condition)	76 lm/W
Rated luminous flux	5925 lm
Color rendering index Ra	67
Color temperature	3300 K
Light color	3300
Rated LLMF at 2,000 h	0.68
Rated LLMF at 4,000 h	0.64
Rated LLMF at 6,000 h	0.56
Rated LLMF at 8,000 h	0.50
Rated LLMF at 12,000 h	0.45
UV protection	Yes
Luminous flux	5925 lm

Dimensions & weight



Diameter	19.0 mm
Length	117.0 mm
Light center length (LCL)	57.0 mm
Product weight	15.00 g

Temperatures & operating conditions

Maximum permitted outer bulb temperature	500 °C
Maximum permitted pinch temperature	350 °C

Lifespan

Rated lamp survival factor at 2,000 h	0.95
Rated lamp survival factor at 4,000 h	0.90
Rated lamp survival factor at 6,000 h	0.85
Rated lamp survival factor at 8,000 h	0.80
Rated lamp survival factor at 12,000 h	0.50
Lifespan B50	12000 h

Additional product data

Base (standard designation)	RX7s
Design / version	Clear
Mercury content	12.6 mg

Capabilities

Dimmable	No
Burning position	p45
Enclosed luminaire required	Yes
Hot restart	Yes

Certificates & standards

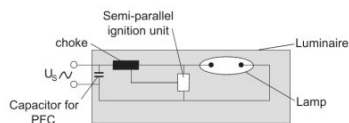
Energy efficiency class	A
Energy efficiency class	A
Energy consumption	86 kWh/1000h

Country-specific categorizations

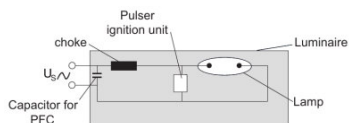
ILCOS	MD/UB-70/730-H/E/SL-RX7s-19/117/H
-------	-----------------------------------

SYSTEM GUARANTEE

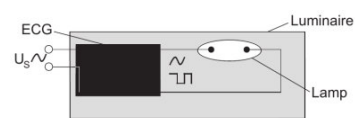
When operated with OSRAM POWERTRONIC control gear, an extended system guarantee is granted for these lamps



Circuit diagram



Circuit diagram



Circuit diagram

LOGISTICAL DATA

Product code	Product description	Packaging unit (Pieces/Unit)	Dimensions (length x width x height)	Volume	Gross weight
4008321678300	HQI-TS 70 W/WDL	Shipping carton box 12	149 mm x 136 mm x 118 mm	2.39 dm ³	386.00 g

The mentioned product code describes the smallest quantity unit which can be ordered. One shipping unit can contain one or more single products. When placing an order, for the quantity please enter single or multiples of a shipping unit.

REFERENCES / LINKS

For more information on the system guarantee and the terms and conditions of the guarantee visit

- ▶ www.ledvance.com/system-guarantee

DISCLAIMER

Subject to change without notice. Errors and omission excepted. Always make sure to use the most recent release.