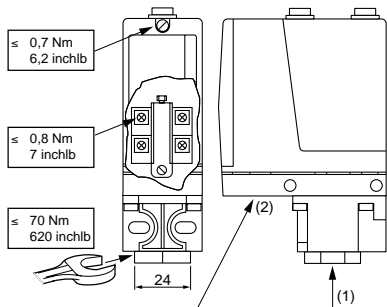
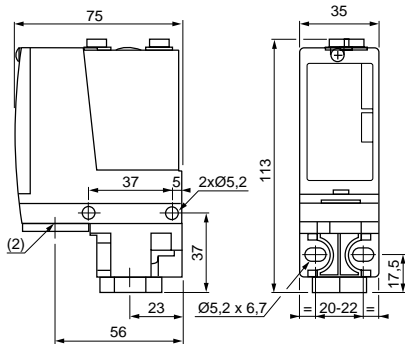


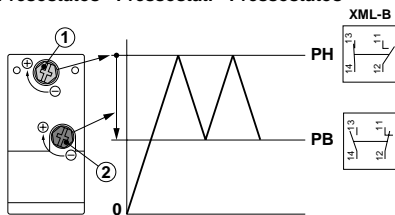
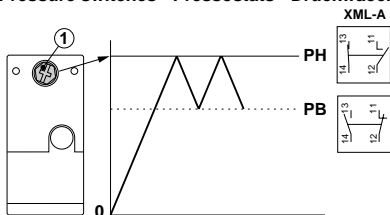
Dimensions - Encombrements - Abmessungen - Dimensiones - Dimensioni - Atravancamentos
 Mounting details - Fixations - Befestigung - Fijación - Quote di fissaggio - montagem



XML.....1	PG13.5 DIN46255	1/4" Gaz ISO228
XML.....2	M20 BS4568	G 1/4" ISO228 BS2779
XML.....3	1/2"-14 NPT ANSI B2-1	1/4"-18NPTF ANSIB1.20.3
XML.....4	1/2" PF JIS B0202	1/4" PT JIS B0203

XML-A/BM01/M05/010/020/035/070/160/300/500/XML-A004

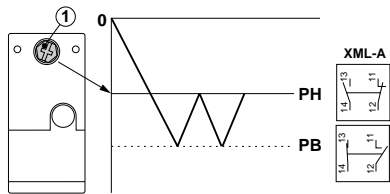
Pressure switches - Pressostats - Druckwaechter - Presostatos - Pressostati - Pressostatos



XML-A001/002/004/010/020/035/070/160/300/500

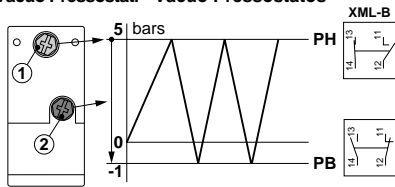
XML-B010/020/035/070/160/300/500

Vacuum switches - Vacuostats - Vakuumschalter - Vacuostatos - Vacuostati - Vacuostatos



XML-AM01

Vacuum pressure switches - Vacuopressostats - Vakuumpresostatos - Vacuo Presostatos - Vacuo Pressostati - Vacuo Pressostatos

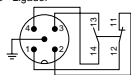


XML-BM05

XML-A/B Wiring diagram - Schémas de raccordement - Anschlußpläne - Esquemas - Schema di cablaggio - Esquemas de ligação

Connector - Connecteur - Steckverbinder - Conector - connettore - Ligador

M12



⚠ DANGER / PELIGRO / DANGER

HAZARDOUS VOLTAGE

Disconnect all power before servicing equipment.

Electric shock will result in death or serious injury.

TENSION PELIGROSA

Desenergice el equipo antes de realizarle servicio.

Una descarga eléctrica podrá causar la muerte o lesiones serias.

TENSION DANGEREUSE

Couper l'alimentation avant de travailler sur cet appareil.

Une électrocution entrainera la mort ou des blessures graves.

PH	High setting point - Point haut - Oberer Schallpunkt - Punto de disparo superior - Punto di scatto superiore
PB	Low setting point - Point bas - Unterer Schallpunkt - Punto de disparo inferior - Punto di scatto inferiore

Adjustable / Réglable / Einstellbar / Regulable / Regolabile	Not adjustable / Non réglable / Nicht einstellbar / No regulable / Non regolabile
--	---

