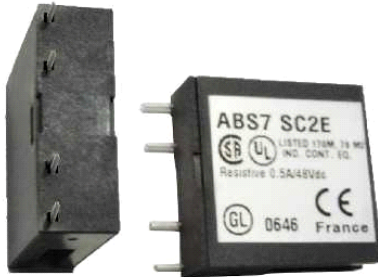


ABS7SC2E

plug-in solid state relay - 10 mm - output - 5..48 V
DC - 0.5 A



Main

Range of product	Advantys Telefast ABE7
Product or component type	Plug-in solid state relay
Relay type	Output relay
Quantity per set	Set of 4

Complementary

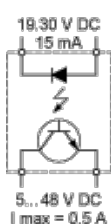
Response time	<= 0.1 ms from state 0 to 1 <= 0.6 ms from state 1 to 0
Width pitch dimension	10 mm
Product compatibility	ABE7P16T210 ABE7P16T212 ABE7P16T214 ABE7P16T215
Discrete input voltage	24 V DC
Discrete output voltage	5...48 V DC
Discrete output current	500 mA
Current state 0 guaranteed	0.4 mA DC
Current state 1 guaranteed	2.9 mA DC
Voltage state 0 guaranteed	3.8 V DC
Voltage state1 guaranteed	18.6 V DC
Product weight	0.016 kg

Environment

Offer Sustainability

Sustainable offer status	Green Premium product
RoHS (date code: YYWW)	Compliant - since 0808 - Schneider Electric declaration of conformity
REACH	Reference not containing SVHC above the threshold
Product environmental profile	Available
Product end of life instructions	Need no specific recycling operations

Internal Wiring Diagram



The information provided in this documentation contains general descriptions and/or technical characteristics of the performance of the products contained herein. This documentation is not intended as a substitute for and is not to be used for determining suitability or reliability of these products for specific user applications. It is the duty of any such user or integrator to perform the appropriate and complete risk analysis, evaluation and testing of the products with respect to the relevant specific application or use thereof. Neither Schneider Electric Industries SAS nor any of its affiliates or subsidiaries shall be responsible or liable for misuse of the information contained herein.

Temperature Derating Curves

