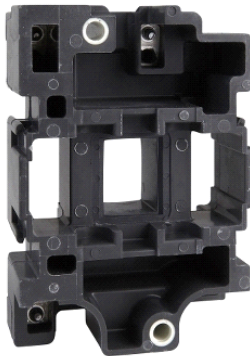


LX1D6F7

TeSys D - contactor coil - LX1D6 - 110 V AC 50/60 Hz for 80 & 95 A contactor



Main

Range	TeSys
Product or component type	Contactor coil
Device short name	LX1D6
Control circuit type	AC 50/60 Hz
[Uc] control circuit voltage	110 V AC 50/60 Hz
Average resistance	26 Ohm at 20 °C
Inductance of closed circuit	1.7 H
Product compatibility	LC1D80 LC1D95
Mechanical durability	4 Mcycles
Operating rate	3600 cyc/h at <= 60 °C

Complementary

Coil technology	Without built-in suppressor module
Control circuit voltage limits	0.3...0.6 Uc at 55 °C drop-out 50/60 Hz 0.8...1.1 Uc at 55 °C operational 50 Hz 0.85...1.1 Uc at 55 °C operational 60 Hz
Inrush power in VA	245 VA at 20 °C (cos f 0.75) 60 Hz 245 VA at 20 °C (cos f 0.75) 50 Hz
Hold-in power consumption in VA	26 VA at 20 °C (cos f 0.3) 50 Hz 26 VA at 20 °C (cos f 0.3) 60 Hz
Heat dissipation	6...10 W at 50/60 Hz

Environment

ambient air temperature for operation	-5...60 °C
product weight	0.28 kg

Offer Sustainability

Sustainable offer status	Green Premium product
RoHS (date code: YYWW)	Compliant - since 0847 - Schneider Electric declaration of conformity
REACH	Reference not containing SVHC above the threshold
Product environmental profile	Available
Product end of life instructions	Available

The information provided in this documentation contains general descriptions and/or technical characteristics of the products contained herein. This documentation is not intended as a substitute for and is not to be used for determining suitability or reliability of these products for specific user applications. It is the duty of any such user or integrator to perform the appropriate and complete risk analysis, evaluation and testing of the products with respect to the relevant specific application or use thereof. Neither Schneider Electric Industries SAS nor any of its affiliates or subsidiaries shall be responsible or liable for misuse of the information contained herein.