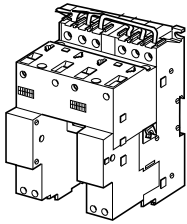


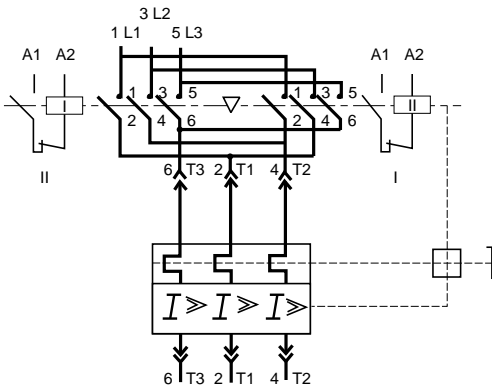
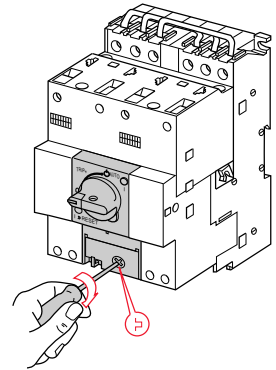
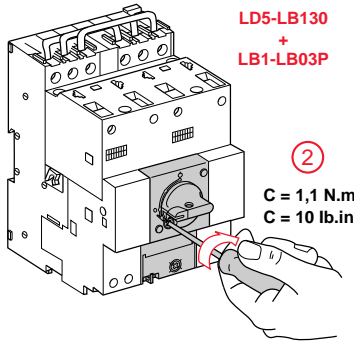
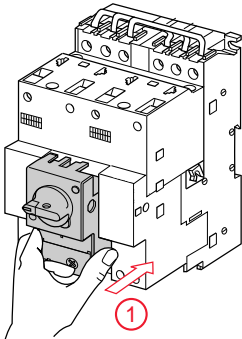
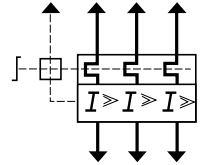
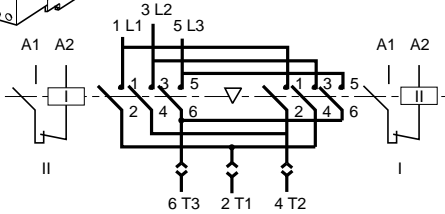
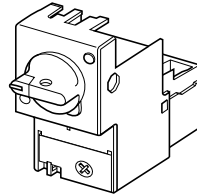
The lateral add-on blocks are mounted before the module
 Monter les additifs latéraux avant le module
 Die seitlichen Zusatzteile vor dem Modul einbauen
 Montar los aditivos laterales antes del módulo
 Montare gli additivi laterali prima del modulo
 Montar os aditivos laterais antes do módulo

integral 18

LD5-LB LA1/LA9



LD5-LB130



IMPORTANT

Il convient de vérifier à la mise en service et périodiquement, au moins une fois par an, le déclenchement de l'appareil.

IMPORTANT

Once a year at least, we advise during installation and periodically during service, to trip test the unit.

WICHTIG

Es empfiehlt sich, die Inbetriebnahme und das Auslösen in regelmäßigen Abständen mindestens einmal pro Jahr zu überprüfen

IMPORTANTE

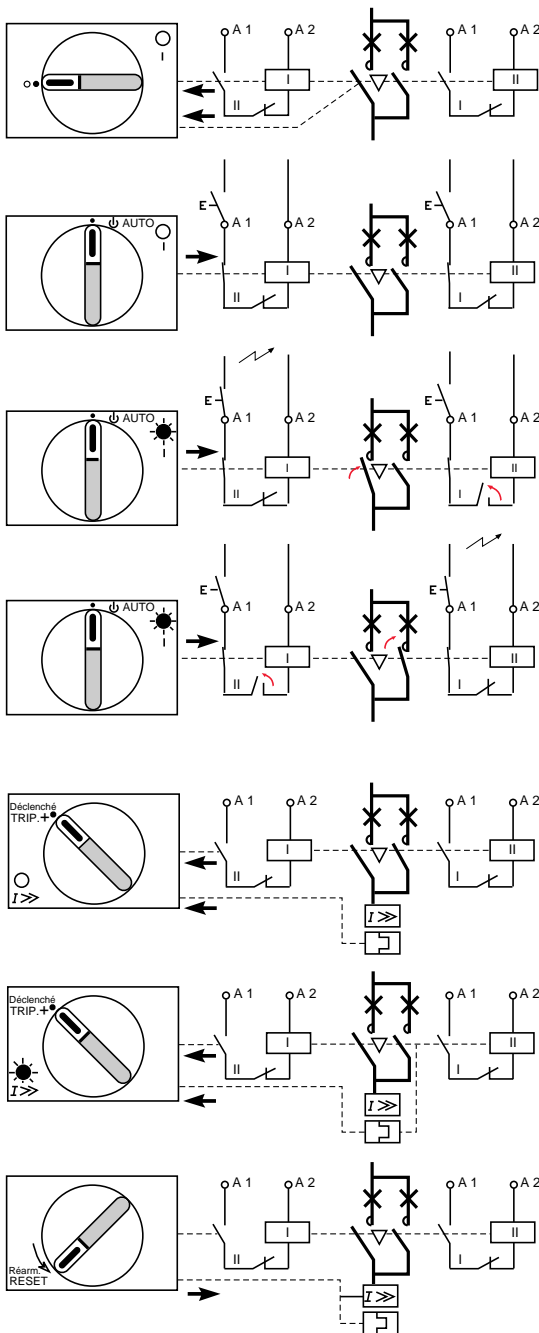
Es importante comprobar al arranque y de vez en cuando al menos una vez por año, el lanzamiento del aparato.

IMPORTANTE

Conviene verificar, al atto della messa in servizio e periodicamente almeno una volta all'anno, l'innesto dell'apparechio

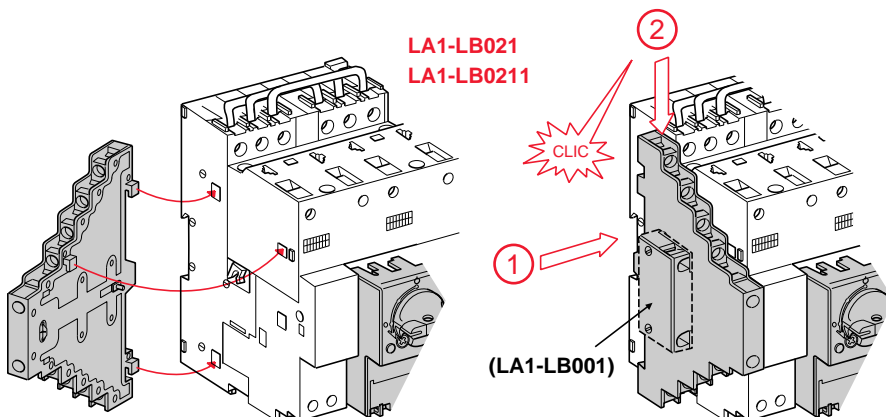
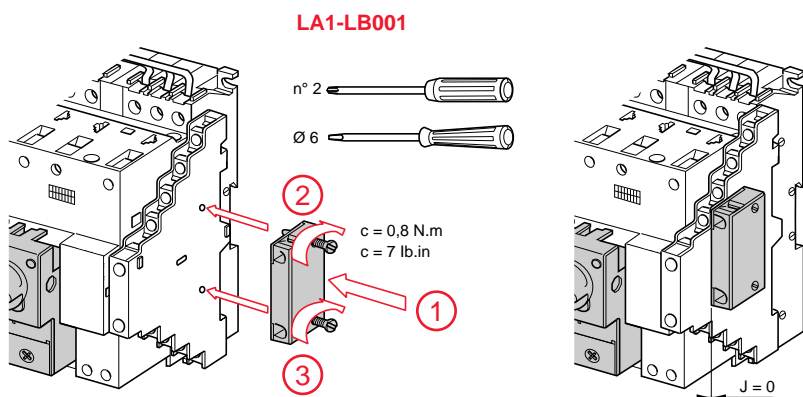
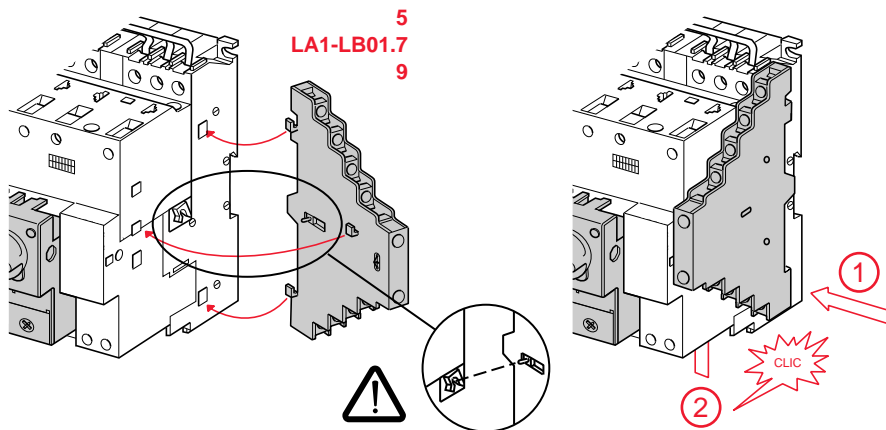
IMPORTANTE

Convém verificar, ao colocar em serviço e periodicamente pelo menos uma vez por ano, o disparo do aparelho



integral 18

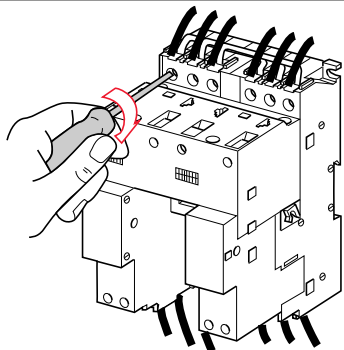
LD5-LB LA1/LA9



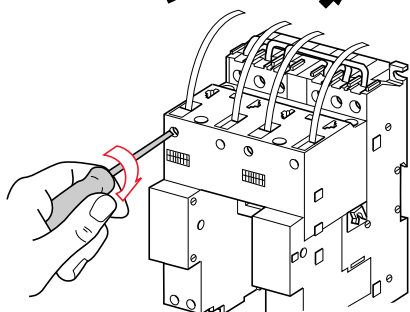
	LA1-LB015	LA1-LB017	LA1-LB019	LA1-LB001	LA1-LB021	LA1-LB001	Sur l'intégral	LA1-LB021					
	13 23 31 14 24 32	95 97 96 98	13 31 14 32	97 98	13 31 14 32	95 96	41 42	13 23 31 14 24 32	15 17 16 18	41 42	05 07 06 08	13 23 31 14 24 32	16 18 15 17
	13 23 31 14 24 32	95 97 96 98	13 31 14 32	97 98	13 31 14 32	95 96	41 42	13 23 31 14 24 32	15 17 16 18	41 42	05 07 06 08	13 23 31 14 24 32	16 18 15 17
	13 23 31 14 24 32	95 97 96 98	13 31 14 32	97 98	13 31 14 32	95 96	41 42	13 23 31 14 24 32	15 17 16 18	41 42	05 07 06 08	13 23 31 14 24 32	16 18 15 17
	13 23 31 14 24 32	95 97 96 98	13 31 14 32	97 98	13 31 14 32	95 96	41 42	13 23 31 14 24 32	15 17 16 18	41 42	05 07 06 08	13 23 31 14 24 32	16 18 15 17
	13 23 31 14 24 32	95 97 96 98	13 31 14 32	97 98	13 31 14 32	95 96	41 42	13 23 31 14 24 32	15 17 16 18	41 42	05 07 06 08	13 23 31 14 24 32	16 18 15 17
	13 23 31 14 24 32	95 97 96 98	13 31 14 32	97 98	13 31 14 32	95 96	41 42	13 23 31 14 24 32	15 17 16 18	41 42	05 07 06 08	13 23 31 14 24 32	16 18 15 17
	13 23 31 14 24 32	95 97 96 98	13 31 14 32	97 98	13 31 14 32	95 96	41 42	13 23 31 14 24 32	15 17 16 18	41 42	05 07 06 08	13 23 31 14 24 32	16 18 15 17
	13 23 31 14 24 32	95 97 98 96	13 31 14 32	97 98	13 31 14 32	95 96	41 42	13 23 31 14 24 32	15 17 16 18	41 42	05 07 06 08	13 23 31 14 24 32	16 18 15 17
	13 23 31 14 24 32	95 97 96 98	13 31 14 32	97 98	13 31 14 32	95 96	41 42	13 23 31 14 24 32	15 17 16 18	41 42	05 07 06 08	13 23 31 14 24 32	16 18 15 17

integral 18

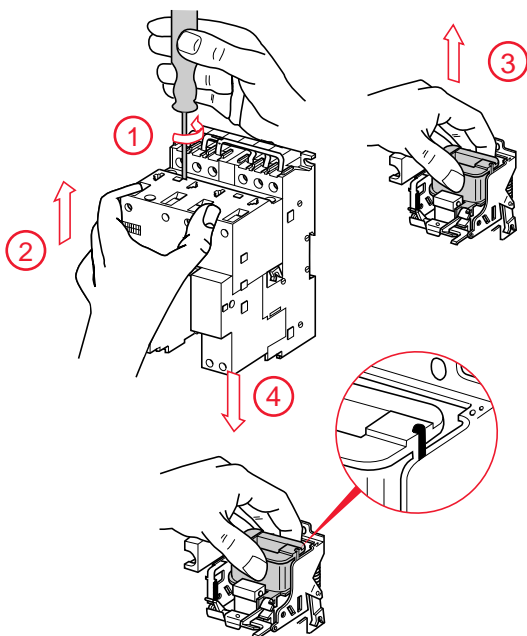
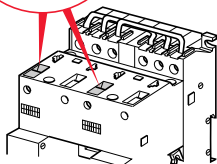
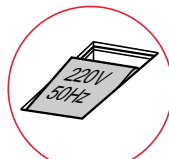
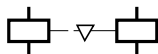
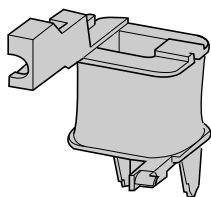
LD5-LB LA1/LA9

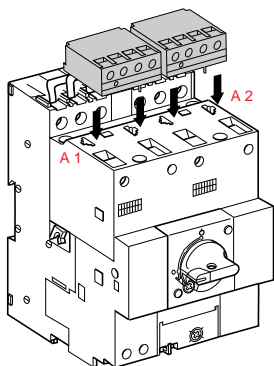


[mm ²]	[mm ²]	[mm ²]	[mm ²]	[mm ²]	[mm ²]			C N.m	C lb.in
1...6	1...4 + 1...4	1.5...6	1.5...6 + 1.5...6	1.5...6	1.5...6 + 1.5...6		Philips	1,7	15
1...2,5 + LA1-LB	1...2,5 + 1...2,5	1...2,5	1...2,5 + 1...2,5	1...2,5	1...2,5 + 1...2,5		Ø 6	1,2	10



LX1



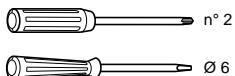
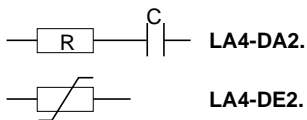
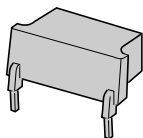


**LA4 DF. / LA4 DW. - LA4 DL
LA4 DM.
LA4 DR. / LA4 DT.**

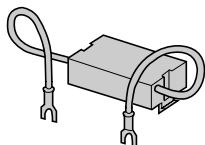
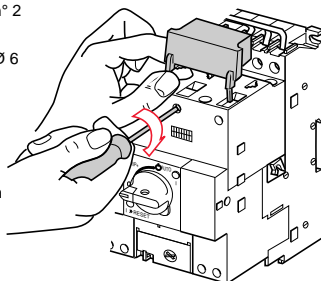
Modules d'interface
INTERFACE MODULES
INTERFACE-MODULE
MÓDULOS DE INTERFACE
MODULO DE INTERFACCIA
MÓDULOS DE INTERFACE

Modules "AUTO-MAN" "I" "O"
"AUTO-MAN" "I" "O" INPUT MODULE
SCHALTMODUL "HAND-AUS" "I" "O"
MÓDULOS "AUTO-MAN" "I" "O"
MODULO "AUTO-MAN" "I" "O"
MÓDULOS "AUTO-MAN" "I" "O"

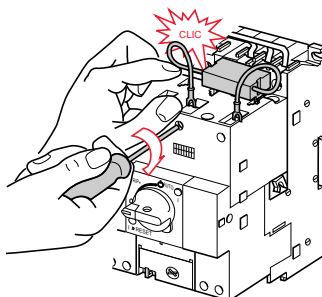
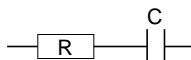
Retard à l'excitation ou à la désexcitation bobine
DELAY ON COIL ENERGISATION OR DENERGISATION
VERZÖGERUNGSBLÖCKE ANSPRECH, RÜCKFALLVER ZÖGERT
RITARDO ALL'ECCITAZIONE O ALLA DISECCITAZIONE BOBINA
RETRASO A LA CONEXION O A LA DESCONEXION DE LA BOBINA
ASTRASO NA EXCITAÇÃO OU DESEXCITAÇÃO DA BOBINA



c = 1,2 N.m
c = 10 lb.in

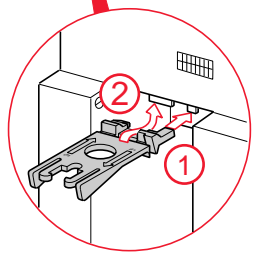
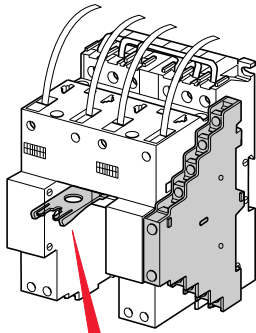


LA9-D09982

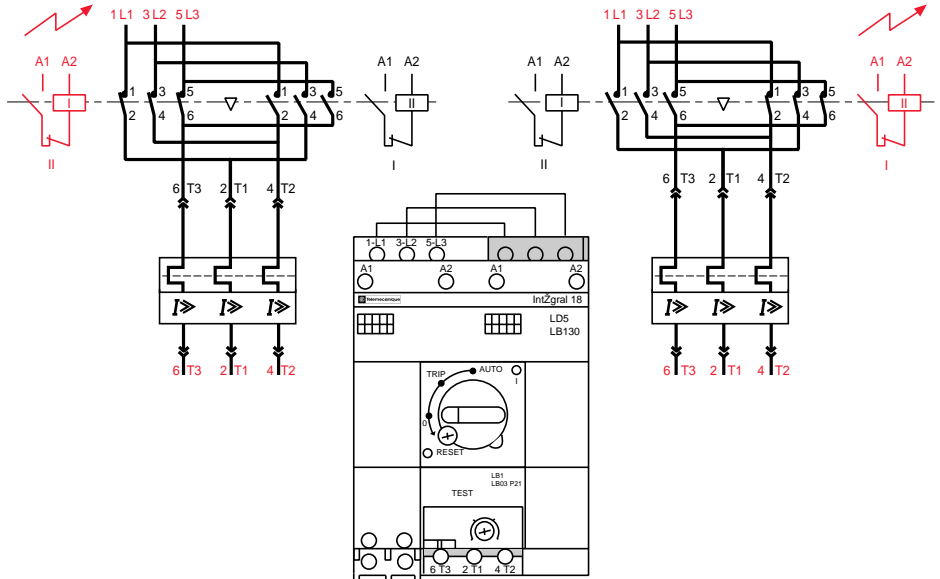
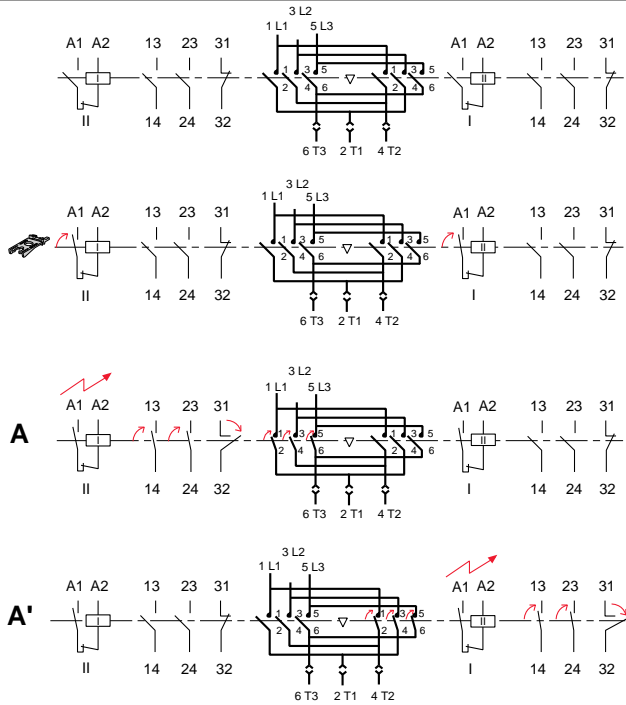


integral 18

LD5-LB LA1/LA9



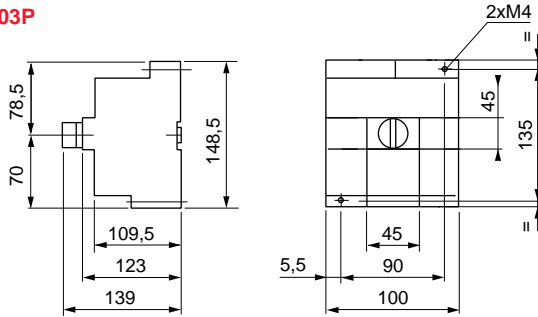
LA9-LB398



integral 18

LD5-LB LA1/LA9

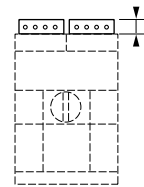
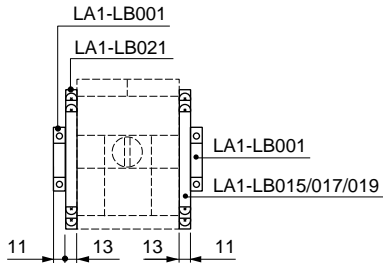
LD5-LB130 + LB-LB03P



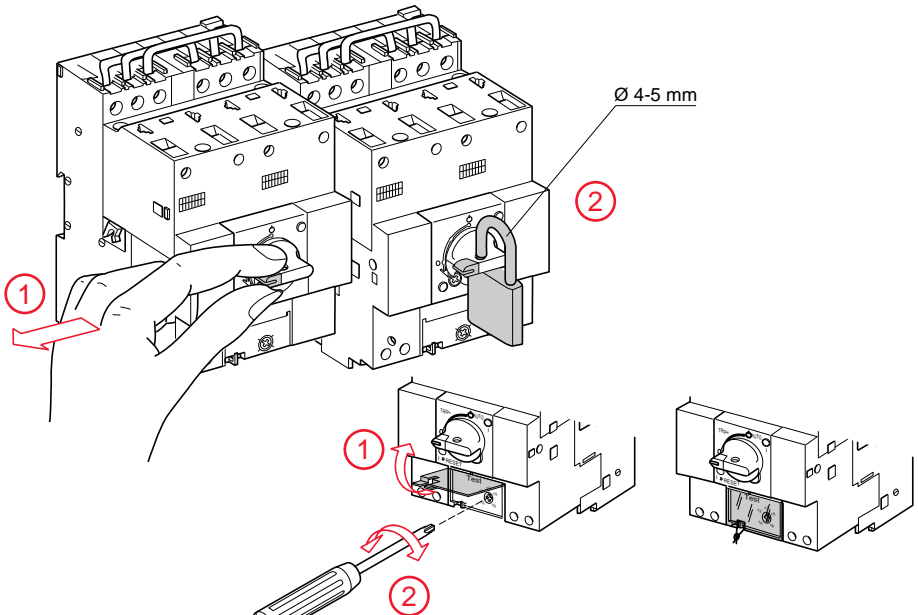
LA1-LB●●● LA4-D●●

LA1-LB015/017/019 LA1-LB021, LA1-LB001

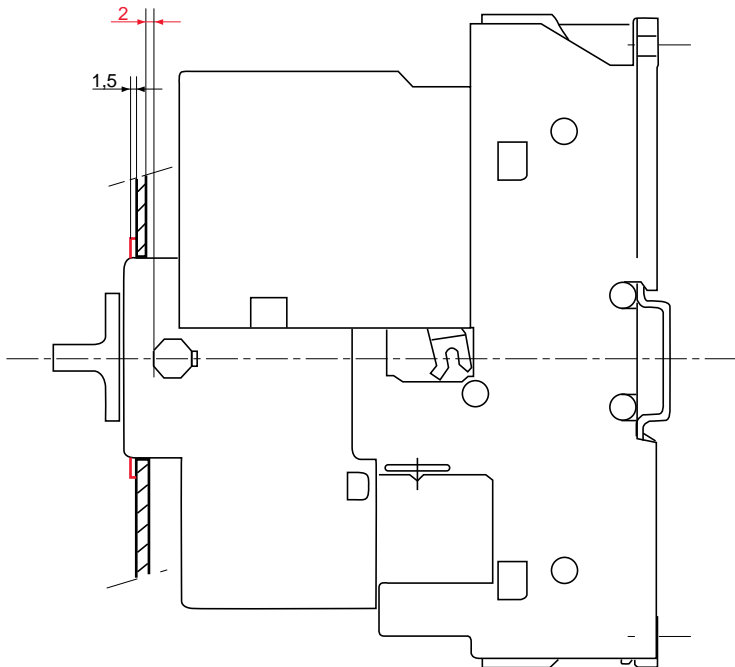
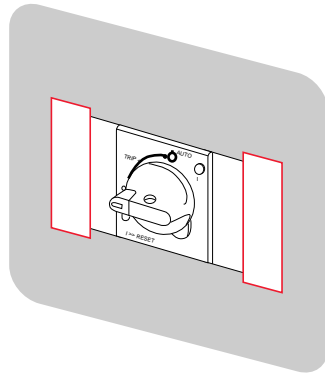
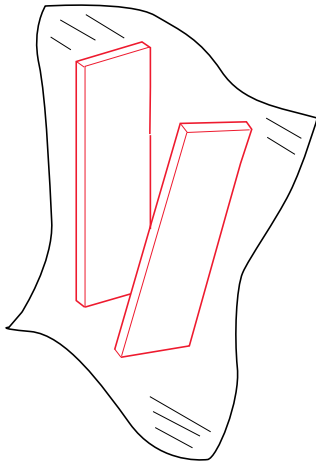
LA4-D..



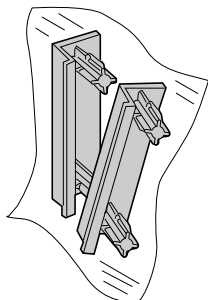
LA 4..	
12	DF DT
19	DR DL DM DW



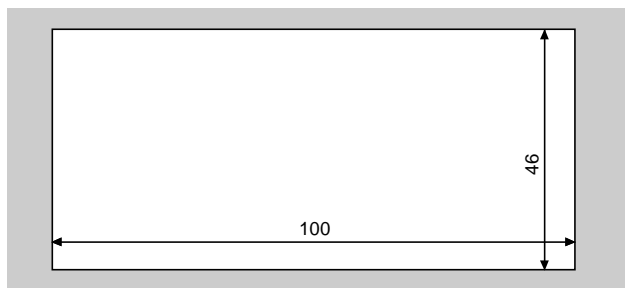
GA1 C6



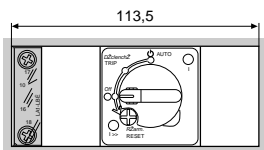
LA9 LB 910



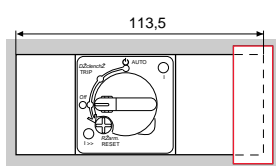
LD5



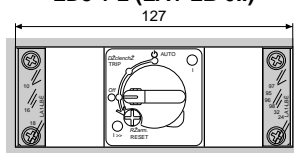
LD5 + 1 (LA1-LB 0..)



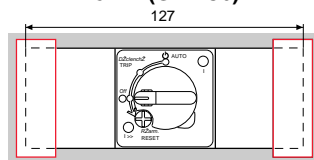
LD5 + 1 (GA1 C6)



LD5 + 2 (LA1-LB 0..)



LD5 + 2 (GA1 C6)



Avertissement

Pour assurer les protections de surcharge, de court-circuit et de défaut de terre, suivre les instructions du fabricant concernant la sélection des protections de surcharge et de court-circuit afin de réduire les risques de feu et de choc électrique.

WARNING

TO MAINTAIN OVERCURRENT, SHORT-CIRCUIT AND GROUND-FAULT PROTECTION, THE MANUFACTURER'S INSTRUCTIONS FOR SELECTION OF OVERLOAD AND SHORT-CIRCUIT PROTECTION MUST BE FOLLOWED TO REDUCE THE RISK OF FIRE OR ELECTRIC SHOCK.

WARNING:

UM DIE SCHUTZFUNKTIONEN BEI ÜBERLAST, KURZSCHLUSS UND ERDSCHLUSS ZU GEWÄHRLEISTEN SIND DIE ANGABEN DES HERSTELLERS ZUR AUSWAHL DER ÜBERLAST-UND KURZSCHLUSSSCHUTZES ZUR VERMEIDUNG VON FEUER UND ELEKTRISCHEN SCHLÄGEN ZU BEFOLGEN.

(AVISO)

(PARA DISPONER DE LA PROTECCIÓN CONTRA SOBRECARGAS, CORTOCIRCUITO Y DEFECTO A TIERRA DEBEN SERGUIRSE LAS INSTRUCCIONES DE SELECCIÓN DE PROTECCIONES INDICADAS POR EL FABRICANTE, REDUCIENDO ASÓ, EL RIESGO DE DESCARGA ELÉCTRICA O INCENDIO)

ATTENZIONE

PER RIDURRE IL RISCHIO DI INCENDIO O DI SHOCK ELETTRICO ATTENERSI ALLE ISTRUZIONI DEL COSTRUTTORE RIGUARDANTI LA PROTEZIONE CONTRO LE SOVRACORRENTI, IL CORTO CIRCUITO ED I GUASTI VERSO TERRA.

ATENÇÃO

PARA ASSEGURAR AS PROTECÇÕES CONTRA SOBRECARGAS, CURTO-CIRCUITOS E DEFEITO À TERRA É NECESSÁRIO SEGUIR AS INSTRUÇÕES DO FABRICANTE, RELATIVAS À SELECÇÃO DAS PROTECÇÕES CONTRA SOBRECARGAS E CURTO-CIRCUITOS, DE MANEIRA A REDUZIR OS RISCOS DE INCÊNDIO E DE CHOQUES ELÉTRICOS.

integral 18

LD5-LB LA1/LA9

