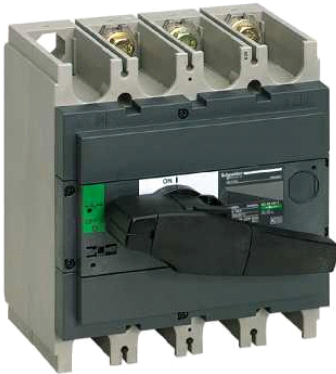


31112

switch-disconnector Compact INS500 - 500 A - 3 poles



Main

Range	Compact
Product or component type	Switch disconnector
Product name	Compact INS
Poles description	3P
Network type	AC DC
Network frequency	50/60 Hz
[Ie] rated operational current	AC-22A : 500 A AC 50/60 Hz 220/240 V DC-22A : 500 A DC 125 V 2 poles in series AC-22A : 500 A AC 50/60 Hz 380/415 V AC-23A : 500 A AC 50/60 Hz 220/240 V AC-23A : 500 A AC 50/60 Hz 660/690 V AC-22A : 500 A AC 50/60 Hz 480 V NEMA AC-23A : 500 A AC 50/60 Hz 380/415 V DC-23A : 500 A DC 125 V 2 poles in series AC-22A : 500 A AC 50/60 Hz 660/690 V AC-22A : 500 A AC 50/60 Hz 440/480 V AC-23A : 500 A AC 50/60 Hz 440/480 V AC-22A : 500 A AC 50/60 Hz 500/525 V AC-23A : 500 A AC 50/60 Hz 500/525 V AC-23A : 500 A AC 50/60 Hz 480 V NEMA
[Ui] rated insulation voltage	750 V AC 50/60 Hz
[Uimp] rated impulse withstand voltage	8 kV 8 kV conforming to IEC 60947-3
[Ith] conventional free air thermal current	500 A (60 °C)
[Icm] rated short-circuit making capacity	330 kA 690 V AC 50/60 Hz with upstream protection circuit breaker 50 kA 690 V AC 50/60 Hz switch-disconnector alone
[Ue] rated operational voltage	125 V DC 690 V AC 50/60 Hz
Suitability for isolation	Yes
Contact position indicator	Yes
Visible break	No
Pollution degree	3

Complementary

Control type	Direct front rotary handle
Handle colour	Black
Mounting mode	Fixed
Mounting support	Plate Rail
Upside connection	Front
Downside connection	Front
Maximum power	AC-23 : 355 kW 500/525 V AC 50/60 Hz AC-23 : 250 kW 440 V AC 50/60 Hz AC-23 : 132 kW 220/240 V AC 50/60 Hz AC-23 : 150 kW 230 V NEMA AC 50/60 Hz AC-23 : 250 kW 380/415 V AC 50/60 Hz AC-23 : 250 kW 480 V NEMA AC 50/60 Hz AC-23 : 500 kW 660/690 V AC 50/60 Hz
Rated duty	Uninterrupted
[Icw] rated short-time withstand current	11.5 kA (3 s) conforming to IEC 60947-3 20 kA (1 s) conforming to IEC 60947-3 4 kA (30 s) conforming to IEC 60947-3

The information provided in this documentation contains general descriptions and/or technical characteristics of the performance of the products contained herein. This documentation is not intended as a substitute for and is not to be used for determining suitability or reliability of these products for specific user applications. It is the duty of any such user or integrator to perform the appropriate and complete risk analysis, evaluation and testing of the products with respect to the relevant specific application or use thereof. Neither Schneider Electric Industries SAS nor any of its affiliates or subsidiaries shall be responsible or liable for misuse of the information contained herein.

4.9 kA (20 s) conforming to IEC 60947-3

Mechanical durability	10000 cycles
Electrical durability	AC-22A : 1500 cycles 440 V AC 50/60 Hz AC-22A : 1500 cycles 500 V AC 50/60 Hz AC-22A : 1500 cycles 690 V AC 50/60 Hz AC-23A : 1500 cycles 440 V AC 50/60 Hz AC-23A : 1500 cycles 500 V AC 50/60 Hz AC-23A : 1500 cycles 690 V AC 50/60 Hz DC-23A : 1000 cycles 125 V DC
Connection pitch	45 mm
Height	205 mm
Width	185 mm
Depth	130 mm
Product weight	4.6 kg

Environment

standards	IEC 60947-1 IEC 60947-3
product certifications	CCC KEMA-KEUR
IP degree of protection	IP40 conforming to IEC 60529
IK degree of protection	IK07 conforming to EN 50102
ambient air temperature for operation	-25...70 °C
ambient air temperature for storage	-50...85 °C