

PRODUCT DATASHEET

L 6 W/640

Basic T5 Short | Tubular fluorescent lamps 16 mm, short, with G5 base



AREAS OF APPLICATION

- Shops
- Supermarkets and department stores
- Public buildings

PRODUCT BENEFITS

- Ideal for cost-effective creative illumination and decoration
- Very good luminous flux maintenance throughout the life of the lamp
- Slim and compact

PRODUCT FEATURES

- Average lifetime: up to 10,000 h (with QUICKTRONIC ECG)



TECHNICAL DATA

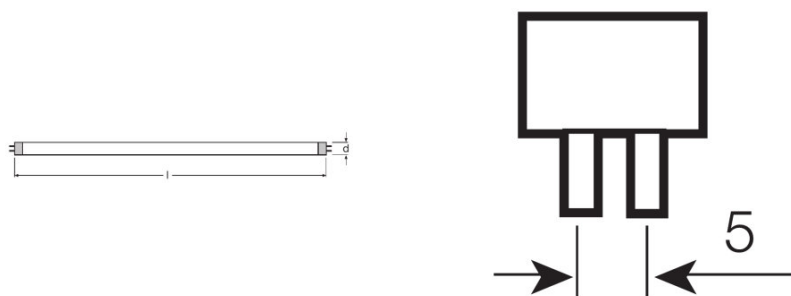
Electrical data

Nominal wattage	6.00 W
Rated lamp efficacy (HF data 25 °C)	Under clarification by authority and standardization body
Rated wattage	6.00 W

Photometrical data

Color rendering index Ra	≥60
Luminous flux at 25 °C	270 lm
Light color	4000
Light color (designation)	Cool White
Color temperature	4000 K
Luminous flux	270 lm
Color rendering index Ra	≥60

Dimensions & weight



Tube diameter	16 mm
Length	212.0 mm
Length with base excl. base pins/connection	212.00 mm
Diameter	16.0 mm

Lifespan

Lifespan	8000 h ¹⁾
Rated lamp life time	5000 h
Nominal lamp life time	5000 h

¹⁾ With CCG/LLCG

Additional product data

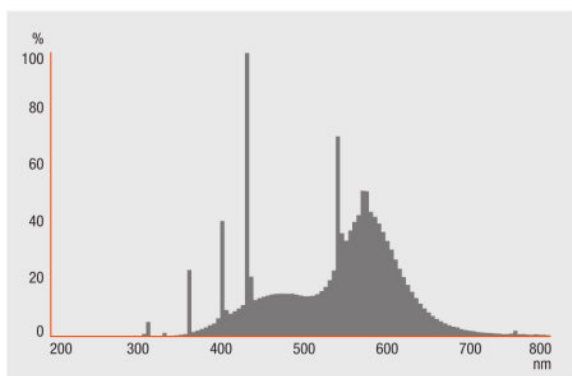
Base (standard designation)	G5
Mercury content	2.5 mg

Show WEEE picto	Yes
------------------------	-----

Certificates & standards

Energy efficiency class	A
Energy efficiency class	A
Energy consumption	7 kWh/1000h

Light Distribution



Spectral power distribution

SYSTEM GUARANTEE

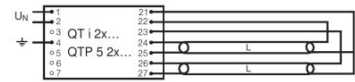
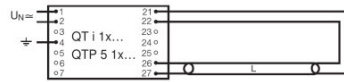
OSRAM System+ Guarantee in combination with OSRAM ECGs

SAFETY ADVICE

In case of lamp breakage: www.ledvance.com/brokenlamp



Die Zuleitungen 3 und 4 sollen so kurz wie möglich sein



Circuit diagram

Circuit diagram

Circuit diagram

LOGISTICAL DATA

Product code	Product description	Packaging unit (Pieces/Unit)	Dimensions (length x width x height)	Volume	Gross weight
4008321025050	L 6 W/640	Shipping carton box 10	241 mm x 51 mm x 105 mm	1.29 dm ³	361.00 g
4050300008899	L 6 W/640	Shipping carton box 25	249 mm x 117 mm x 106 mm	3.09 dm ³	755.50 g

The mentioned product code describes the smallest quantity unit which can be ordered. One shipping unit can contain one or more single products. When placing an order, for the quantity please enter single or multiples of a shipping unit.

DISCLAIMER

Subject to change without notice. Errors and omission excepted. Always make sure to use the most recent release.

Basic T5 Short | Tubular fluorescent lamps 16 mm, short, with G5 base

Product name	Product name ECG	EAN	Nominal current	Nominal wattage + Power loss	Luminous flux at 35 °C	Number of lighting outlets
L 6 W/640	QT-ECO 1x4-16/220-240 L	4050300660370	0.06 A	8.50 W	270 lm	1
	QT-ECO 1x4-16/220-240 S	4050300638584	0.06 A	8.50 W	270 lm	1
	QT-ECO 2x5-11/220-240 S	4050300821504	0.11 A	14.50 W	280 lm	2