

PRODUCT DATASHEET

HO 39 W/830

LUMILUX T5 HO | Tubular fluorescent lamps 16 mm, high output, with G5 base



AREAS OF APPLICATION

- Industry
- Public buildings
- Offices
- Tunnels, underpasses
- Car parks
- Outdoor applications only in suitable luminaires

PRODUCT BENEFITS

- Excellent luminous flux
- Up to 20 % more economical than LUMILUX T8
- Up to 50 % smaller volume than comparable T8 lamps

PRODUCT FEATURES

- Very good lumen maintenance: 90 % throughout the service lifetime of the lamp
- Long average lifetime: up to 24,000 h (with QUICKTRONIC ECG)
- Good color rendering group: 1B (R_a : 80...89)
- Dimmable



TECHNICAL DATA

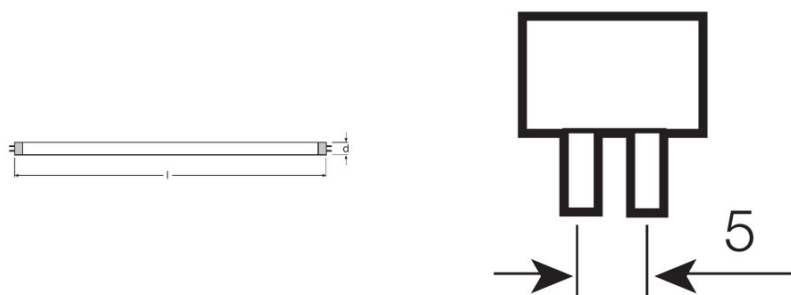
Electrical data

| | |
|-------------------------------------|---------|
| Nominal voltage | 118 V |
| Nominal wattage | 39.00 W |
| Rated lamp efficacy (HF data 25 °C) | 79 lm/W |
| Rated wattage | 38.00 W |

Photometrical data

| | |
|---------------------------|--------------------|
| Color rendering index Ra | ≥80 |
| Rated luminous flux | 3100 lm |
| Luminous flux at 25 °C | 3100 lm |
| Luminous flux at 35 °C | 3500 lm |
| Light color | 3000 |
| Rated color temperature | 3000 K |
| Nominal luminous flux | 3100 lm |
| Light color (designation) | LUMILUX Warm White |
| Rated LLMF at 2,000 h | 0.95 |
| Rated LLMF at 4,000 h | 0.93 |
| Rated LLMF at 6,000 h | 0.92 |
| Rated LLMF at 8,000 h | 0.90 |
| Rated LLMF at 12,000 h | 0.90 |
| Rated LLMF at 16,000 h | 0.90 |
| Rated LLMF at 20,000 h | 0.89 |
| Color temperature | 3000 K |
| Luminous flux | 3100 lm |
| Color rendering index Ra | ≥80 |

Dimensions & weight



| | |
|---------------|-------|
| Tube diameter | 16 mm |
|---------------|-------|

| | |
|--|-----------|
| Length | 849.0 mm |
| Length with base excl. base pins/connection | 849.00 mm |
| Diameter | 16.0 mm |
| Maximum diameter | 16.0 mm |

Temperatures & operating conditions

| | |
|---|---------|
| Rated ambient temp.w.max.luminous flux | 35.0 °C |
|---|---------|

Lifespan

| | |
|---|-----------------------|
| Service life | 19000 h ¹⁾ |
| Lifespan | 24000 h ¹⁾ |
| Rated lamp survival factor at 2,000 h | 0.99 |
| Rated lamp survival factor at 4,000 h | 0.99 |
| Rated lamp survival factor at 6,000 h | 0.99 |
| Rated lamp survival factor at 8,000 h | 0.99 |
| Rated lamp survival factor at 12,000 h | 0.99 |
| Rated lamp survival factor at 16,000 h | 0.97 |
| Rated lamp survival factor at 20,000 h | 0.85 |
| Operation mode LLMF/LSF | HF |
| Rated lamp life time | 24000 h |
| Nominal lamp life time | 24000 h |

¹⁾ With preheat ECG

Additional product data

| | |
|------------------------------------|--|
| Base (standard designation) | G5 |
| Mercury content | 1.7 mg |
| Show WEEE picto | Yes |
| Product remark | Suitable for ECG operation only/Lamp designed for internal luminaire temperatures of 30...40 °C; optimum luminous flux achieved at 35 °C |

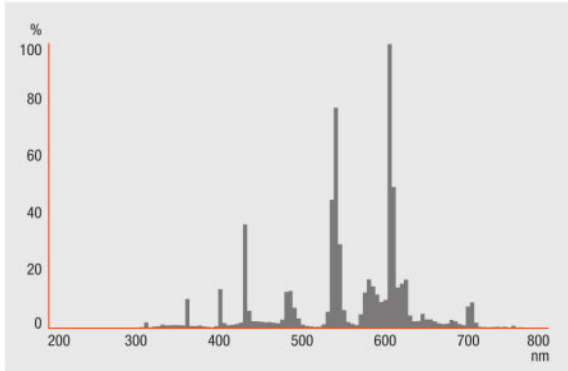
Capabilities

| | |
|----------------------------|-----|
| Dimmable | Yes |
| Suitable for indoor | Yes |

Certificates & standards

| | |
|--------------------------------|--------------|
| Energy efficiency class | A+ |
| Energy efficiency class | A+ |
| Energy consumption | 42 kWh/1000h |

Light Distribution



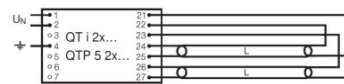
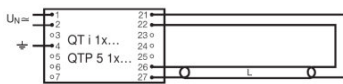
Spectral power distribution

SYSTEM GUARANTEE

- OSRAM System+ Guarantee in combination with OSRAM ECGs

SAFETY ADVICE

In case of lamp breakage: www.ledvance.com/brokenlamp



Circuit diagram

Circuit diagram

LOGISTICAL DATA

| Product code | Product description | Packaging unit (Pieces/Unit) | Dimensions (length x width x height) | Volume | Gross weight |
|---------------|---------------------|---------------------------------|---|-----------------------|--------------|
| 4050300453552 | HO 39 W/830 | Shipping carton box 40 | 900 mm x 83 mm x 194 mm | 14.49 dm ³ | 3414.00 g |
| 4050300591728 | HO 39 W/830 | Shipping carton box 20 | 887 mm x 90 mm x 110 mm | 8.78 dm ³ | 2134.00 g |

The mentioned product code describes the smallest quantity unit which can be ordered. One shipping unit can contain one or more single products. When placing an order, for the quantity please enter single or multiples of a shipping unit.

REFERENCES / LINKS

For more information on the system guarantee and the terms and conditions of the guarantee visit

▶ www.ledvance.com/system-guarantee

DISCLAIMER

Subject to change without notice. Errors and omission excepted. Always make sure to use the most recent release.

LUMILUX T5 HO | Tubular fluorescent lamps 16 mm, high output, with G5 base

| Product name | Product name ECG | EAN | Nominal current | Nominal wattage + Power loss | Luminous flux at 35 °C | Number of lighting outlets |
|--------------|-----------------------|---------------|-----------------|------------------------------|------------------------|----------------------------|
| HO 39 W/830 | QT-FIT 5/8 1x18-39 | 4008321873927 | 0.19 A | 42.00 W | 3100 lm | 1 |
| | QT-FIT 5/8 2x18-39 | 4008321873903 | 0.36 A | 80.00 W | 3100 lm | 2 |
| | QTi 1x14/24/21/39 GII | 4008321383334 | 0.18 A | 41.00 W | 3100 lm | 1 |
| | QTi 1x21/39 DIM | 4050300870564 | 0.18 A | 41.80 W | 3100 lm | 1 |
| | QTi 2x14/24/21/39 GII | 4008321383396 | 0.36 A | 81.00 W | 3100 lm | 2 |
| | QTi 2x21/39 DIM | 4050300870694 | 0.36 A | 82.00 W | 3100 lm | 2 |
| | QTi DALI 1x21/39 DIM | 4050300870366 | 0.18 A | 41.80 W | 3100 lm | 1 |
| | QTi DALI 2x21/39 DIM | 4050300870489 | 0.36 A | 82.00 W | 3100 lm | 2 |
| | QTP-M 1x26-42 | 4008321329134 | 0.18 A | 41.00 W | 3100 lm | 1 |
| | QTP-OPTIMAL 1x18-40 | 4008321873743 | 0.13 A | 41.00 W | 3100 lm | 1 |
| | QTP-OPTIMAL 2x18-40 | 4008321873767 | 0.24 A | 88.00 W | 3100 lm | 2 |