

Catalogue No: **XM30PB123P**

MCCB 85kA 3P 12A

Power Distribution and Protection > Circuit Breakers > Moulded Case Circuit Breakers > Terasaki TemBreak 1 Moulded Case Circuit Breakers > XM30PB Motor Start MCCB



Representative Photo Only
(actual product may vary based on configuration selections)

TB1 XM30PB MCCB 85kA 12A 3P

- 1 or 3 phase motor starting MCCB, MCC applications
- Current limiting device, reduces fault let through energy for increased installation safety
- Complies to AS / NZS 60947-2, IEC 60947-2
- Panel mount standard with plug-in option
- Wide range of accessories for application flexibility
- 3 pole MCCB
- Compact 148 mm H, 103 mm D, 25 mm pole centres
- Fault rating; 85 kA ICU @ 415 VAC
- 100% ICU / ICS
- Utilisation ratings from 220 V to 525 VAC
- Hydraulic magnetic trip unit: fixed long time / fixed magnetic
- Trip units; 0.7, 1.4, 2.0, 2.6, 4.0, 5.0, 8.0, 10, 12 A

SPECIFICATIONS

Product Series	TemBreak 1 MCCB
Utilization Category	A
Switching Poles	3P qty poles
Depth (less toggle)	103 mm
Depth (toggle included)	117 mm
Type of Power Supply	AC AC/DC
Component Type MCCB	AC MCCB
Rated Frequency	50 / 60 Hz
Ue, Rated Operational Voltage, AC, max	525 V AC
Trip Unit Rating	1.2 A
In, Rated Current at 40°C	12 A @40°C
In, Rated Current at 45°C	1.2 A @45°C
Icm, Rated Short-Circuit Making Capacity, 440V AC	85 kA
Ics, Rated Service Short-Circuit Breaking Capacity, AC (IEC 60947)	100 % Icu
Icu, Rated Ultimate Short-Circuit Breaking Capacity, 220/240V AC	125 kA @220/240VAC
Icu, Rated Ultimate Short-Circuit Breaking Capacity, 400/415V AC	85 kA @400/415VAC
Icu, Rated Ultimate Short-Circuit Breaking Capacity, 440V AC	85 kA @440VAC
Frame Size	30 AF size
Number of Poles	3
Ui, Rated Insulation Voltage	690 V (rms)
Height	148 mm
Width	78 mm
Depth	102 mm
Weight	1.3 kg
Standard Installation Method	Front Connection

Catalogue No: XM30PB123P

MCCB 85kA 3P 12A

Power Distribution and Protection > Circuit Breakers > Moulded Case Circuit Breakers > Terasaki TemBreak 1 Moulded Case Circuit Breakers > XM30PB Motor Start MCCB



AC Power loss per pole at full rated current	1.66 W
Temperature Calibration of trip unit	50 °C
Tightening Torque, Max	2.8 Nm
Tightening Torque, Min	2.3 Nm
Standards Compliance	IEC 60947-2 AS/NZS 3947.2 EN 60947-2 JIS C 8201-2-1 Ann.1 AS 60947-2
DIN rail mounting with optional adapter	No
Suitable for Panel Mounting	Yes
Suitable for Mounting on Chassis	No
Withdrawable	No
Trip Unit Protection Type	Fixed hydraulic, fixed magnetic
Hydraulic Trip Type	Fixed type
Magnetic Trip Type	Fixed type
Operating Temperature, Min	-5 °C min
Operating Temperature, Max	70 °C max
Operating Temperature Relative Humidity	Max. permissible ambient temperature 60°C Max. permissible humidity 95% rel. No Condensation
Relative Humidity, Max	85 %RH
Certifications	ASTA
Shipping Approvals	ABS (American Bureau of Shipping) BV (Bureau Veritas) DNV-GL (Det Norske Veritas Germanischer Lloyd) Lloyd's Register of Shipping NK (Nippon Kaiji Kyokai)

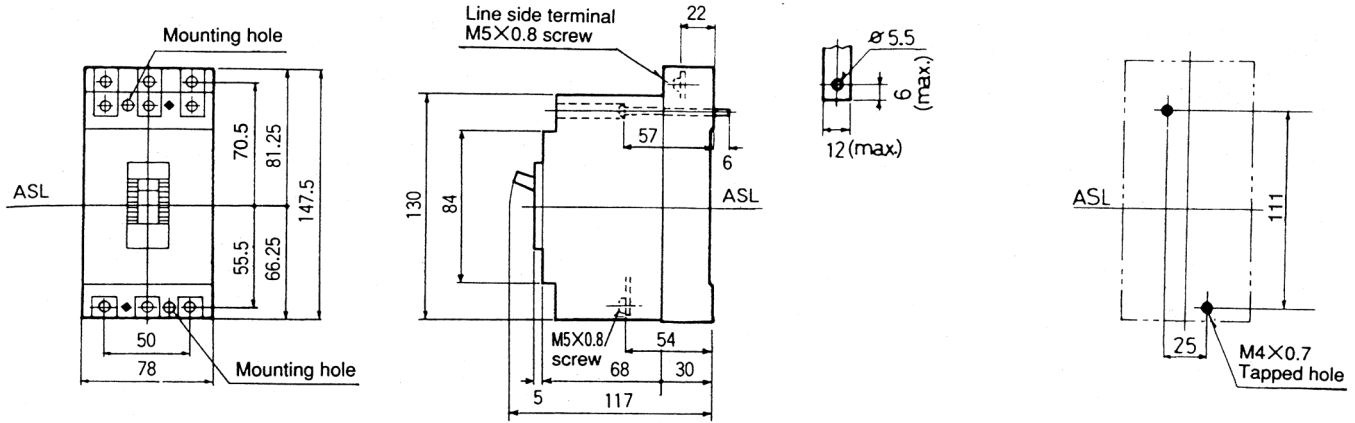
REFERENCES

IECEx Certificate	-
Supplier Declaration of Conformity:	-
Installation Guide:	-
User Manual:	-
Manufacturer Datasheet:	-
Manufacturer Catalogue & Product Selection:	-

Catalogue No: XM30PB123P

MCCB 85kA 3P 12A

Power Distribution and Protection > Circuit Breakers > Moulded Case Circuit Breakers > Terasaki TemBreak 1 Moulded Case Circuit Breakers > XM30PB Motor Start MCCB



Dimension Diagram