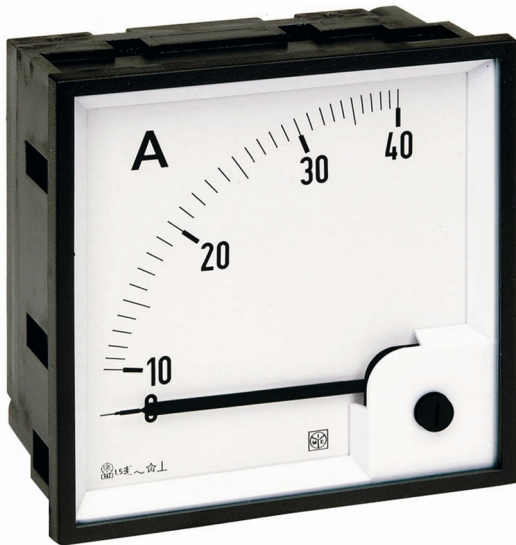


Catalogue No: **RQ96E AAC 30A**
AMMETER DIRECT CONNECT 0-30/150A AC

Energy Management and Building Automation > Energy Management and Metering > Analogue and Digital Meters > IME Analogue Meters > Panel Mount AC Ammeters > 90° Deflection Direct Connect



Representative Photo Only
 (actual product may vary based on configuration selections)

AMMETER 0-30/150A AC DIRECTC

- Accuracy class 1.5 (AS 60051)
- 600V operational voltage rating
- Operating temperature -25 to +50°C
- Ammeter overload parameters: 1.2 x I_n continuous / 10 x I_n for 5s
- Voltmeter overload parameters: 1.2 x U_n continuous / 2 x U_n for 5s
- IP52 rated front frame

SPECIFICATIONS

Product Series	RQ96T
Component Type Metering	Analogue Meter
Meter Type	Instantaneous Current
Input Range(s)	0 ... 30A
Input Units	A
Display (Output) Units	A
Display (Output) Range(s)	0 ... 30A
Ovrange Display	Yes
Ovrange Maximum	150A
Deflection	90 °
Movement Type	Moving iron
Connection Method	Direct connect
Terminal Type	Screw Terminal(s)
Burden, Rated	1.1 VA
Accuracy Class	1.5 Class
U _e , Rated Operational Voltage, AC, max	600 V AC
Current, Overload Capacity, Continuous	0.036 kA
Current, Overload Capacity, 5s (rms)	0.3 kA
Input Frequency, Nom	50 Hz
Input Frequency, Min	45 Hz
Input Frequency, Max	65 Hz
Installation Category	III
Pollution Degree	2
U _i , Rated Insulation Voltage	600 V (rms)
Number of meter displays	1
Height, Window	96 mm
Width, Window	96 mm
Height, Cutout	92 mm



Catalogue No: **RQ96E AAC 30A**

AMMETER DIRECT CONNECT 0-30/150A AC

Energy Management and Building Automation > Energy Management and Metering > Analogue and Digital Meters > IME Analogue Meters > Panel Mount AC Ammeters > 90° Deflection Direct Connect



Width, Cutout	92 mm
Depth	69 mm
Weight	0.21 kg
Material, Body / Housing	PC (Polycarbonate) material
Mounting	Panel Mount
IP Rating, Front	IP52
IP Rating, Back	IP20
Operating Temperature, Min	-25 °C min
Operating Temperature, Max	50 °C max
Storage Temperature, Min	-40 °C min
Storage Temperature, Max	80 °C max
Relative Humidity, Max	85 %RH
Humidity Type	Non-condensing
Shock Rating	IEC 60051-1
Vibration Displacement (Peak to Peak Max.)	2 mm
Vibration Frequency, Operational (Max.)	80 Hz
Vibration Rating	IEC 60068-2-6
Standards Compliance	IEC 60051 IEC 60051-1 IEC 60068-2-6 IEC 61010-1 IEC 60529

REFERENCES

IECEX Certificate	-
Supplier Declaration of Conformity:	-
Installation Guide:	-
User Manual:	-
Manufacturer Datasheet:	-
Manufacturer Catalogue & Product Selection:	-

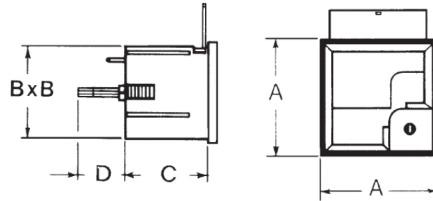
Catalogue No: **RQ96E AAC 30A**
AMMETER DIRECT CONNECT 0-30/150A AC

Energy Management and Building Automation > Energy Management and Metering > Analogue and Digital Meters > IME Analogue Meters > Panel Mount AC Ammeters > 90° Deflection Direct Connect

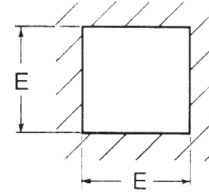


AQ/RQ Analogue meters

Meter dimensions



Meter cut-out dimensions



Overall dimensions (mm)

Cat. No.	A	B	C	D	E
RQ48	48 x 48	44.5 x 44.5	40	22	45
AQ48	48 x 48	44.5 x 44.5	57.5	22	45
RQ72	72 x 72	66.5 x 66.5	44	12	68
AQ72	72 x 72	66.5 x 66.5	59	12	68
RQ96	96 x 96	91 x 91	44	12	92
AQ96	96 x 96	91 x 91	59	12	92

Dimension Diagram