

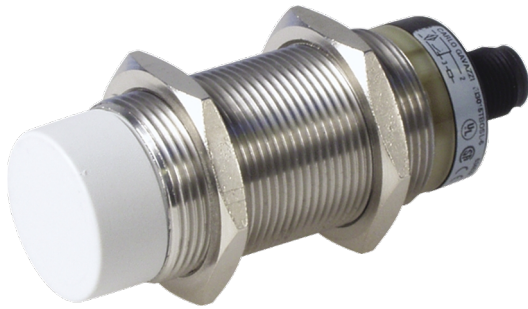
Catalogue No: **NEI3015PPOS1**

INDUCTIVE STAINLESS STEEL LONG M30 DC PNP NO 15mm M12 PLUG

Field Switching and Sensing > Non Contact Sensors > Proximity Sensors > Carlo Gavazzi Proximity Sensors > Carlo Gavazzi Discrete Inductive Proximity Sensors > Cylindrical 30mm - Inductive Sensors



EI Series Inductive Proximity Sensor, stainless steel M30 long housing, 10-40 V DC supply, PNP NO output, 15mm sensing range, IP67 rating, M12 plug



- Cylindrical housing from 4 to 30mm
- Both digital (SCR, transistor) and analogue outputs.
- Standard and extended sensing distance
- Flat-pack housing Stainless steel and Polyester housing Flush / Non flush versions

Representative Photo Only
(actual product may vary based on configuration selections)

SPECIFICATIONS

Product Series	EI
Component Type Field Switching & Sensing	Proximity Sensor
Sensing Mode	Inductive
Shielded	No
Shape	Cylindrical - Threaded
Diameter	30 mm
Length	87.5 mm
Orientation	Straight Through
Mounting (Multiple)	Non-Flush Mount Mounting Nuts (Included)
Teach Mode / Sensitivity Adjustment	No sensitivity
Sensing Distance	15 mm
Ue, Rated Operational Voltage, DC, min	10 V DC
Ue, Rated Operational Voltage, DC, max	40 V DC
Switching Mode	N/O
Output Type	PNP
Switching/Operating Frequency	100 Hz
Number of Conductors	3 qty
Connection / Termination	M12 x 1, DC Micro, 4-pin
Material, Body / Housing	Stainless Steel material
Operating Temperature, Max	70 °C max
Operating Temperature, Min	-25 °C min
Storage Temperature, Max	80 °C max
Storage Temperature, Min	-30 °C min
IP Rating	IP67

Catalogue No: **NEI3015PPOS1**

INDUCTIVE STAINLESS STEEL LONG M30 DC PNP NO 15mm M12 PLUG

Field Switching and Sensing > Non Contact Sensors > Proximity Sensors > Carlo Gavazzi Proximity Sensors > Carlo Gavazzi Discrete Inductive Proximity Sensors > Cylindrical 30mm - Inductive Sensors



REFERENCES

IECEX Certificate -

Supplier Declaration of
Conformity: -

Installation Guide: -

User Manual: -

Manufacturer Datasheet: [NEI3015PPOS1_ManufacturerDatasheet](#)

Manufacturer Catalogue
& Product Selection: -