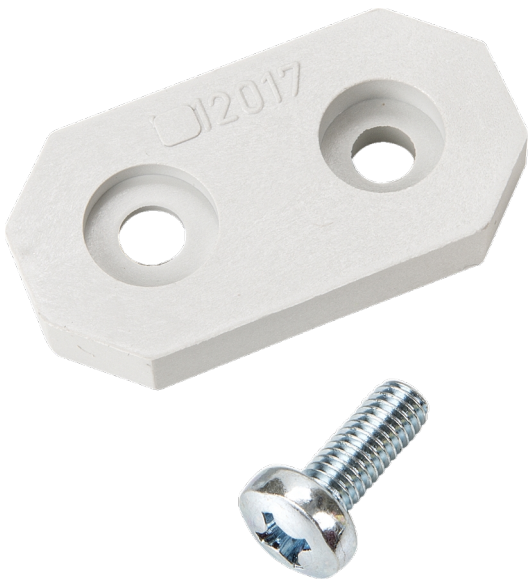


# Catalogue No: **FP 12017**

## WALL MOUNTING BRACKETS SUIT FIBOX CAB PC/ABS (QTY 4)

Enclosures and Climate Control > Standard Enclosures > Wall Mount Enclosures > Wall Mount Enclosures - GRPC, ABS and PC > CAB PC/ABS Accessories > External Mounting Brackets



### Wall Mounting Brackets Suit CAB PC/ABS (Qty 4)

- Fully electrically insulated, corrosion proof and weighing up to 60% less than steel makes them a perfect alternative to stainless steel
- Easily customised and machined with easy to use accessories makes installation a dream
- UV protection according to UL 508 and IP66 rating ensures the ARCA enclosures stand the test of time in outdoor conditions
- IK10 impact protection rating provides excellent protection against vandalism
- Patented strong hinge design to withstand regular door opening to 120° and the fitting of door mounted components
- Compatible with the majority of NHP's existing standard enclosure locking options to ensure a secure solution for every application
- Patented lockable inner door – no tools required for mounting
- Patented easy to use DIN-rail frame set design – no special tools required – easy and quick mounting
- Mounting pods on the base, cover and four base sides
- Variable depth option for internal plates
- Double corner design with mounting holes outside the ingress protected area
- Option for steel or insulated mounting plates

Representative Photo Only  
(actual product may vary based on configuration selections)

### SPECIFICATIONS

Product Series CAB Enclosure

### REFERENCES

IECEX Certificate	-
Supplier Declaration of Conformity:	-
Installation Guide:	-
User Manual:	-
Manufacturer Datasheet:	-
Manufacturer Catalogue & Product Selection:	-