

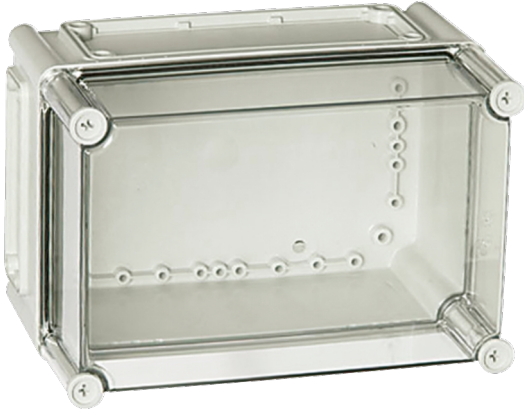
Catalogue No: **EKJB180T**

TERMINAL BOX EK PC IP66/67 H190 x W280 x D180mm CLEAR

Enclosures and Climate Control > Standard Enclosures > Terminal Boxes > Thermoplastic Terminal Boxes > EK PC Range > EK Enclosures with Transparent Cover (Mounting Plates Sold Separately)



Enclosure Terminal Box EK PC IP66/67 Clear W280xH190xD180mm



- IP66/67 rated, IK09 (front surface) IK08 (side surface)
- Halogen free, impact resistant polycarbonate
- Grey RAL 7035 coloured base
- Transparent cover or grey cover option
- Polyurethane/EPDM gasket
- Polyamide cover screws
- Multiple gland plate opening options for connection between enclosures and flange installation
- RoHS compliant

Representative Photo Only
(actual product may vary based on configuration selections)

SPECIFICATIONS

Product Series	EK
Material, Body / Housing	PC (Polycarbonate) material
Height	190 mm
Width	280 mm
Depth	180 mm
Depth, Base	100 mm
IK Rating, Side	IK08
IK Rating, Front	IK09
IP Rating	IP66 IP67
Colour, Body / Housing	Light Grey (RAL 7035) colour
Colour, Cover	Clear / Transparent colour
Material, Gasket / Seal	PUR & EPDM Blend material
Material, Screws / Fastening	Polyamide Screws/Fastening
Standards Compliance	EN 60529 EN 60950 EN 62208:2003 EN 62262
Certifications	RoHS GOST-R

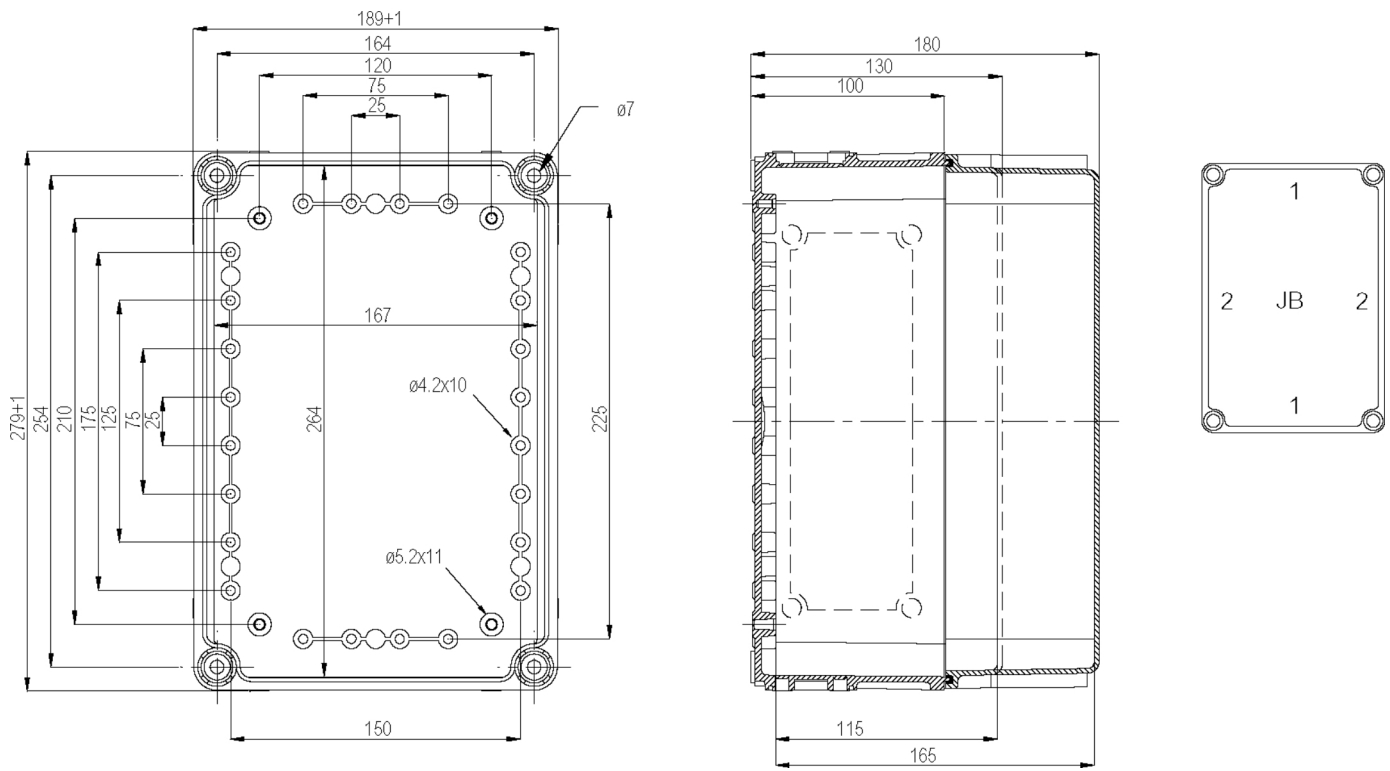
Catalogue No: **EKJB180T**

TERMINAL BOX EK PC IP66/67 H190 x W280 x D180mm CLEAR

Enclosures and Climate Control > Standard Enclosures > Terminal Boxes > Thermoplastic Terminal Boxes > EK PC Range > EK Enclosures with Transparent Cover (Mounting Plates Sold Separately)



REFERENCES	
IECEX Certificate	-
Supplier Declaration of Conformity:	-
Installation Guide:	-
User Manual:	-
Manufacturer Datasheet:	-
Manufacturer Catalogue & Product Selection:	-



Dimension Diagram

Catalogue No: **EKJB180T**

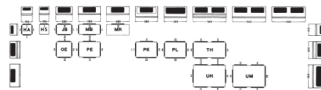
TERMINAL BOX EK PC IP66/67 H190 x W280 x D180mm CLEAR

Enclosures and Climate Control > Standard Enclosures > Terminal Boxes > Thermoplastic Terminal Boxes > EK PC Range > EK Enclosures with Transparent Cover (Mounting Plates Sold Separately)



Complete enclosures

Enclosure dimensions in mm (Nominal)	Base depth	Gland plate size (No. of openings to base)			Complete enclosure (without base plate) 1)			
		I	II	III	With grey cover Cat. No.	With transparent cover Cat. No.		
190 x 190 x 130	100	4	-	-	EKHA 130 G	150.00	EKHA 130 T	150.00
190 x 190 x 180	100	4	-	-	EKHA 180 G	163.00	EKHA 180 T	163.00
190 x 190 x 130	100	1	-	-	EKHS 130 G	150.00	EKHS 130 T	150.00
190 x 190 x 180	100	1	-	-	EKHS 180 G	163.00	EKHS 180 T	163.00
190 x 190 x 130	100	2	2	-	EKJB 130 G	190.00	EKJB 130 T	190.00
190 x 190 x 180	100	2	2	-	EKJB 180 G	215.00	EKJB 180 T	215.00
190 x 190 x 130	100	2	2	-	EKMB 130 G	245.00	EKMB 130 T	245.00
190 x 190 x 180	100	2	2	-	EKMB 180 G	270.00	EKMB 180 T	270.00
190 x 190 x 130	100	-	1	-	EKMR 130 G	245.00	EKMR 130 T	245.00
190 x 190 x 180	100	-	1	-	EKMR 180 G	270.00	EKMR 180 T	270.00
190 x 280 x 130	100	-	4	-	EKSE 130 G	265.00	EKSE 130 T	265.00
190 x 280 x 180	100	-	4	-	EKSE 180 G	276.00	EKSE 180 T	276.00
190 x 280 x 130	100	-	4	-	EKPE 130 G	315.00	EKPE 130 T	315.00
190 x 280 x 180	100	-	4	-	EKPE 180 G	335.00	EKPE 180 T	335.00
190 x 190 x 180	150	-	3	1	EKPK 180 G	375.00	EKPK 180 T	375.00
190 x 280 x 230	150	-	3	1	EKPK 230 G	390.00	EKPK 230 T	390.00
190 x 280 x 180	150	-	2	2	EKPL 180 G	375.00	EKPL 180 T	375.00
190 x 280 x 230	150	-	2	2	EKPL 230 G	390.00	EKPL 230 T	390.00
190 x 280 x 130	100	-	6	-	EKTH 130 G	455.00	EKTH 130 T	455.00
190 x 380 x 180	150	-	6	-	EKUH 180 G	620.00	EKUH 180 T	620.00
190 x 380 x 180	150	-	5	1	EKUM 180 G	620.00	EKUM 180 T	620.00
190 x 500 x 250	150	-	8	-	EKWH 250 G	1420.00	-	-



Technical Diagram