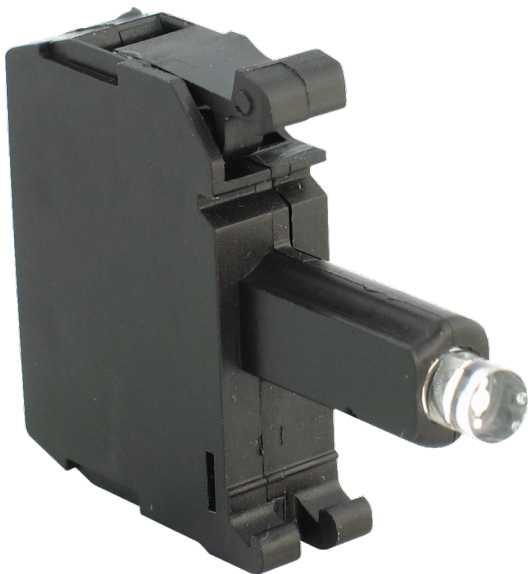


Catalogue No: **D7-N3G**
LAMP MODULE LED 24VACDC GREEN

Operator Control Devices > Pushbuttons and Control Switches > Pushbuttons and Pilot Lights > Sprecher + Schuh D7 Pushbuttons and Pilot Lights > D7 Lamp Modules for use with Pilot Lights > Integrated LED Modules, 24V AC/DC



Representative Photo Only
 (actual product may vary based on configuration selections)

Integrated LED lamp block Green 24V AC/DC

- D7 pilot devices offer maximum flexibility and a wide choice for all 22.5mm operator applications with all type (e-stops, selector switches, pushbuttons, pilot lights and more), colour and contact configurations.
- Aesthetically appealing and modularly designed to make assembly and interchangeability easy.
- Operators exhibit low profile and stylish appearance while maintaining the rugged performance necessary for demanding environments
- D7P is a plastic operator with a captive black plastic front bezel. Constructed of high-grade thermoplastics, the D7P is suitable for almost all environments and strong chemical resistance.
- D7M has a die-cast zinc housing and mounting ring for rugged durability. Finished with corrosion resistant chrome plating, the D7M also features a captive shiny metal bezel for a polished appearance.

SPECIFICATIONS

Product Series	D7 22.5mm Control & Indication
Component Type Pushbutton and Pilot Lights	Lamp Module
Un, Nominal Operational Voltage, AC	24 V AC
Ubmin, Service Voltage, AC, Min	20 V AC
Ubmax, Service Voltage, AC, Max	26 V AC
Un, Nominal Operational Voltage, DC	24 V DC
Ubmin, Service Voltage, DC, Min	18 V DC
Ubmax, Service Voltage, DC, Max	30 V DC
In, Rated Current	0.024 A
Rated Frequency	50 / 60 Hz
Lamp Type	LED type
Lamp Holder	Integrated Lamp Module
Colour, Lamp	Green (525nm) colour
Luminous Intensity	890 mcd
Material, Body / Housing	Glass-Filled Nylon / PA6 / PA66 (Polyamide 6) material
Material, Spring	Stainless Steel
Material, Contacts	Silver Nickel (AgNi) material
Material, Terminal	Brass
Terminal Type	Screw Terminal(s)
Tightening Torque, Min	0.7 Nm
Tightening Torque, Max	0.9 Nm
RoHS Approved	Yes
CE Marked	Yes
Operating Temperature, Max	70 °C max
Operating Temperature, Min	-25 °C min
Storage Temperature, Max	85 °C max
Storage Temperature, Min	-25 °C min
Relative humidity, min	50 %RH

Catalogue No: **D7-N3G**

LAMP MODULE LED 24VACDC GREEN

Operator Control Devices > Pushbuttons and Control Switches > Pushbuttons and Pilot Lights > Sprecher + Schuh D7
Pushbuttons and Pilot Lights > D7 Lamp Modules for use with Pilot Lights > Integrated LED Modules, 24V AC/DC



Relative Humidity, Max	95 %RH
IP Rating	IP66 IP65
Shock Acceleration (Max.)	100 g
Shock Duration (Max.)	11 ms
Vibration Acceleration (Max.)	10 m/s ²
Vibration Displacement (Peak to Peak Max.)	1.52 mm
Vibration Frequency, Operational (Max.)	2000 Hz
Vibration Duration (Max.)	180 min
Standards Compliance	NEMA ICS-5 UL 508 EN 60947-1 EN 60947-5-1 EN 60947-5-5 EN 418
Certifications	UL UR CSA CCC CE
Shipping Approvals	RINA (Registro Italiano Navale) ABS (American Bureau of Shipping) Lloyd's Register of Shipping

REFERENCES

IECEX Certificate	-
Supplier Declaration of Conformity:	-
Installation Guide:	-
User Manual:	-
Manufacturer Datasheet:	Series D7_Manufacturer Datasheet
Manufacturer Catalogue & Product Selection:	-

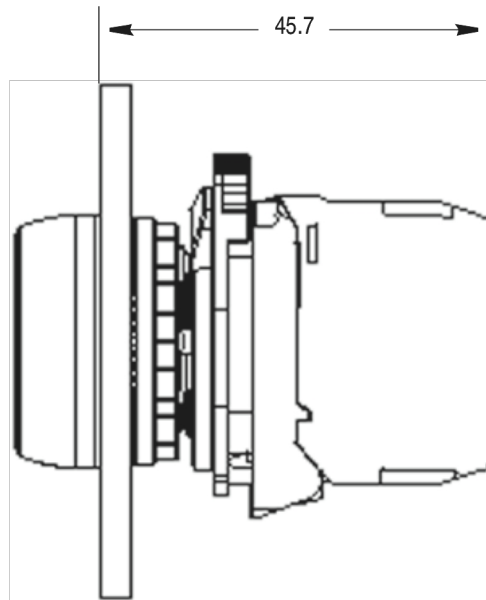
Catalogue No: **D7-N3G**

LAMP MODULE LED 24VACDC GREEN

Operator Control Devices > Pushbuttons and Control Switches > Pushbuttons and Pilot Lights > Sprecher + Schuh D7
Pushbuttons and Pilot Lights > D7 Lamp Modules for use with Pilot Lights > Integrated LED Modules, 24V AC/DC



Back-of-Panel Components — LED Module with Latch (D7-N/Q & D7-ALP/M)



Dimension Diagram