




Relay bases and Accessories

LED and diode modules for series 40 and 62

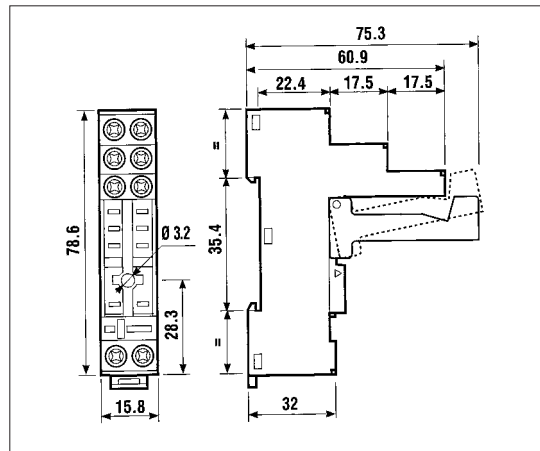
ROBUST & TAMPER-PROOF MODULES

			
Cat. No.	99.020...	99.023...	99.029...
Description	LED module plug-in Tamper-proof	Diode module plug-in Tamper-proof	LED & diode module plug-in Tamper-proof
Voltage ref no. (Add to above Cat. No.)	(024) 6 - 24 V AC/DC (060) 28 - 60 V AC/DC (240) 110 - 240 V AC/DC	(000) 6 - 220 V DC DC voltages only	(024) 6 - 24 V DC (060) 25 - 60 V DC (220) 110 - 220 VDC DC voltages only.
Suitable for bases	95.05, 92.03	95.05, 92.03	95.05, 92.03

Relay base dimensions (mm)

40 Series

Cat No. 95.05



62 Series (plug-in)

Cat No. 92.03

