

theben

THE 64 B — SYNCHRONOUS 24 HOUR DIAL

THE 64 BQ — QUARTZ RESERVE 24 HOUR + 60 MINUTE DIAL.

THE 64 BQ 7 — QUARTZ RESERVE 7 DAY + 24 HOUR DIAL.

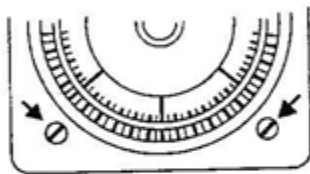


FIG. 1

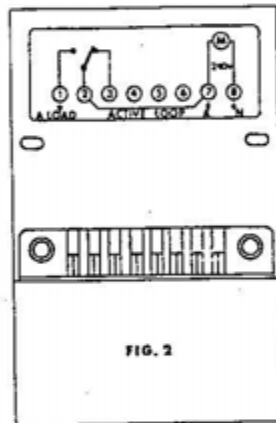


FIG. 2

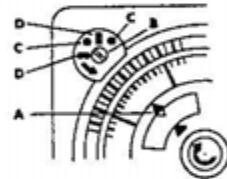


FIG. 3

SURFACE MOUNTING. Lift the transparent cover off and remove the two screws indicated by arrows (fig. 1). Pull the clock body and then the terminal cover from the base. Mount the base (2 screws) and connect from the diagram (fig. 2). Note that terminal 3 is only used when a changeover operation is required.

FLUSH MOUNTING. Cut panel opening 66 x 66 mm, remove switch from base as above and connect from diagram. Mount on panel using bracket and two knurled screws provided.

SET SWITCHING TIME — THE 64 B and BQ. Insert the switching riders to the required positions using red for 'ON' and green for 'OFF'. If more than one switching period in 24 hours is required use the spare riders provided.

SET SWITCHING TIME — THE 64 BQ 7. Insert switching riders as above for days 1-7. If it is desired to omit switching on any day or days do not insert riders for that day or days.

SET DIAL TO TIME. THE 64 B. Turn the dial clockwise until the time required is opposite the white insert 'A'.

SET DIAL TO TIME. THE 64 BQ. Turn the dial clockwise until the hour required is opposite the white insert 'A'. Use the inner knob to fine adjust minutes as shown in the window.

SET DIAL TO DAY. THE 64 BQ 7. Turn the dial clockwise until the current day is opposite the white insert 'A'. Monday is usually taken as day 1. Use the inner knob to adjust for time of day as shown in the window.

SWITCH POSITION. Check that the switch contacts are in the correct position, i.e. when the slot of the white insert B (fig. 3) is in line with either of the dots 'C' the switch is 'OFF' (terminals 1-2 open, 2-3 closed). When the slot is in line with the marks 'D' the switch is 'ON' (terminals 1-2 closed, 2-3 open).

SPECIFICATIONS: 16 Amp. Maximum Switching Capacity

MOTOR LOAD: Up to 2 H.P.

MINIMUM SWITCHING PERIODS: 24 Hour Dial 30 Minutes

INSTALLATION INSTRUCTIONS

THE 64 B/20 - SYNCHRONOUS 24 HOURS

SURFACE MOUNTING. FIG 1

Lift the transparent cover off and remove the two screws indicated by arrows (fig.1). Pull the clock body and then the terminal cover from the base. Mount the base (2 screws) and connect from the diagram.

FLUSH MOUNTING.

Cut panel opening 66 x 66 mm, remove switch from base as above and connect from diagram. Mount on panel using bracket provided.

SWITCHING CAPACITY.

20 (12) A

SET CLOCK. FIG 2

Turn the hands of the clock clockwise to the correct time.



24 HOURS OPERATION

SET SWITCHING TIME. FIG 3

Lift off transparent cover and slide blue switching segments towards inner dial for "ON" period. Each segment represents 15 minutes.


MANUAL CONTROL


(Override switching ON/OFF) FIG 4

Turn the black control axis ① anticlockwise to select "ON" indicated  or OFF indicated . The "OFF" or "ON" selection will be automatically overridden by the following counteracting command of the automatic program setting.

PERMANENT CONTROL ON/OFF AUTO/PERM FIG 4

e.g. HOLIDAY PROGRAM OR PROLONGED ON PERIOD

To select Permanent Mode = (PERM), slide the AUTO/PERM hand lever ② in an outward direction to line up  arrow head with PERM. In "PERM" mode the blue switching segments are disengaged and now permanent "ON" or "OFF" can be selected by turning the black control axis ① anticlockwise.

To select Automatic Mode = (AUTO) - cancel (PERM) mode. Slide the AUTO/PERM hand lever ② in an inward direction to line up  arrow head with Auto. In Auto mode the blue switching segments are now engaged and automatic ON/OFF functions can be selected.

Note: On returning to Auto Mode the actual switch position is maintained until the next counteracting command of the Automatic Program sequence is triggered.

An immediate correction can be carried out by means of manual override control.

