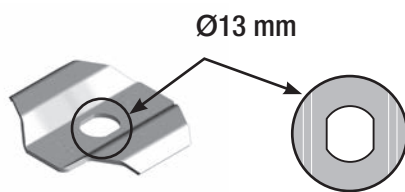


**Surface Finish Available Finish Code**

Pre-Galvanised	G
Hot Dip Galvanised	H

**Note**

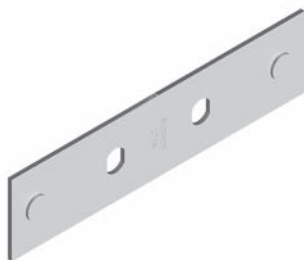
- Hot Dip Galvanised products are manufactured against firm orders only.
- Minimum production quantities may apply.
- Powder coating and special finishes on request against firm orders only and are non returnable.



Burndy Centre Hold Down Clamp can be used in place of traditional Hold Down Clamps to reduce the overall trapeze width.

Order fasteners separately for installation.  
1 x HS1020, 1 x B1008

**LTCHD**



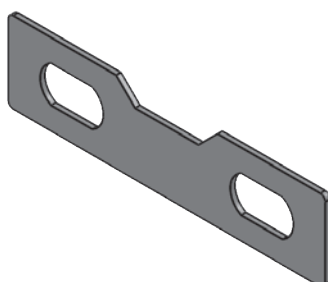
2 Splices required per length of tray.  
Order fasteners separately for installation (per splice plate)  
2 x LTBOLT, 2 x LTNUT

**LT3S**



Order fasteners separately for installation  
1 x HS1025, 1 x B1008

**LT3HD**



6 Riser Links required to perform a 90 degree set.  
Order fasteners separately for installation (per riser link)  
2 x LTBOLT, 2 x LTNUT

**LT3RL**

CHANNELS	1
NUTS & BOLTS	2
CANTILEVER BRACKETS	3
CHANNEL FITTINGS	4
<b>LADDERTRAYS</b>	<b>5</b>
CABLE MESH	6
STEEL LADDERS	7
ALUMINIUM LADDERS	8
FIRE RATED	9
COVERS	10
HYGROUND	11