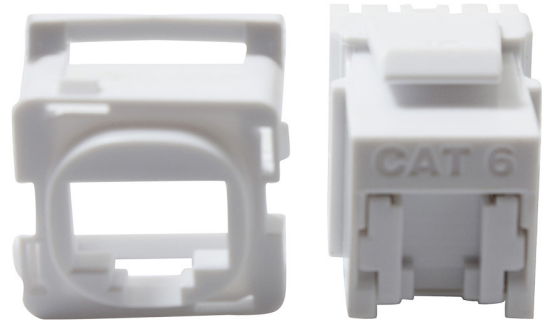


## CAT 6 JACKS

Cabac Category 6/Class E Jacks and couplers have been tested to meet all the electrical performance requirements of ANSI/TIA 568-C.2 Category 6 and ISO 11801 Channel E standards and feature gold plated contacts for superior performance and reliability.

Termination is made easy with both 568A and 568B wiring schemes printed on the jacks. Cables with conductors ranging from 24 to 22 AWG can be terminated into these IDC jacks up to 100 times with a 110 and/or Krone style punch down tool.

Both our Cat6 Jacks and Couplers are rated to at least 700 mating cycles with an RJ45 plug, meaning patch leads can be plugged and unplugged at least 700 times.



### FEATURES AND BENEFITS

- Performance tested to ANSI/TIA 568-C.2 Cat6 and
- ISO 11801 Class E
- 568A and 568B wiring schemes printed on jack
- Punch down with 110 and/or Krone style tool
- Gold plated contacts for superior performance
- RCM and RoHS Compliant

### TECHNICAL DATA



FEATURE						
Part Number	J6/10	J6/50	J6BK/10	J6/10-SH	J6BK/10-SH	CPLC6
Standards Compliance	ANSI/TIA-568.C.2 Cat6 ISO 11801 Class E RCM CA/AS 2008:2010					
Colour	White		Black	White	Black	White
Jack Shape/Style	Clipsal Style					Keystone
Shuttered	No			Yes		No
IDC Termination Type	110 & Krone			110		N/A
Wiring Scheme	568A, 568B					N/A
Conductor Size	24 -22 AWG					N/A
Number of Termination Cycles	100 Minimum					N/A
Number of Plug Insertions	700 Minimum					
Operating Temperature	-10 to +60 Degrees C					
Insulation Resistance	> 200 MΩ					
Contact Resistance	>20 MΩ					
Pack Qty	10	50	10	10	10	Each

In support of our policy of continuous product improvement we reserve the right to change materials and specifications without notice. Drawings, where used, are not to scale. All dimensions are in millimetres and sizes given are approximate. Where possible, technical MSDS data sheets are made available on the website. All products should be installed and used in accordance with manufacturer's instructions provided. Warning: products may be the subject of registered designs and patents. Refer to website for terms and conditions on warranty.